



HAL
open science

Regional Assessment Using Public Webcams of the Role of Post-Storm Recovery in the Seasonal Variability of Beach Width

Yann Balouin, Nico Valentini

► **To cite this version:**

Yann Balouin, Nico Valentini. Regional Assessment Using Public Webcams of the Role of Post-Storm Recovery in the Seasonal Variability of Beach Width. *Coastal Dynamics* 2025, Apr 2025, Aveiro, Portugal. pp.462-468, <10.1007/978-3-032-15477-4_70>. <hal-05566930>

HAL Id: hal-05566930

<https://brgm.hal.science/hal-05566930v1>

Submitted on 25 Mar 2026

HAL is a multi-disciplinary open access archive for the deposit and dissemination of scientific research documents, whether they are published or not. The documents may come from teaching and research institutions in France or abroad, or from public or private research centers.

L'archive ouverte pluridisciplinaire **HAL**, est destinée au dépôt et à la diffusion de documents scientifiques de niveau recherche, publiés ou non, émanant des établissements d'enseignement et de recherche français ou étrangers, des laboratoires publics ou privés.



Distributed under a Creative Commons CC BY 4.0 - Attribution - International License



Regional Assessment Using Public Webcams of the Role of Post-Storm Recovery in the Seasonal Variability of Beach Width

Yann Balouin^(✉) and Nico Valentini

BRGM, Univ Montpellier, Montpellier, France
y.balouin@brgm.fr

Abstract. Understanding the mechanisms and times required for beaches to recover after extreme storms, as well as the effect of these episodic setbacks on long-term coastal erosion trends, is crucial for anticipating changes and implementing effective management strategies. A storm can have significant impacts on the coastline, resulting in retreats of several meters within hours. The natural recovery of the beach in the hours/days following a storm varies greatly between sites, ranging from a few days to several months. In this study, we examine the regional variability in coastal response during winter storms and post-storm recovery, using a beach width indicator obtained through the analysis of public webcam images on event, seasonal, and multi-year time scales. Video-derived shoreline positions were used to calculate weekly average beach widths at 11 sites along the coastline of Occitanie. The analysis demonstrated that storm responses and seasonal trends exhibit significant variability despite similarities in morphologies, and exposure to storm waves. Although post-storm recovery following the major events of 2021 and 2022 was nearly complete and very rapid for most sites, some beaches experienced prolonged recovery periods, requiring several months to return to their initial position. While the results indicated that storm events were sufficiently spaced to allow these beaches to recover, a series of events in autumn 2023 raises questions about this recovery capacity and underscores the potential impact of singular events on medium- and long-term coastal evolution trends.

Keywords: Storm shoreline retreat · Post-storm recovery · Webcam · Regional assessment

1 Introduction

Since the pioneering studies of Holman and Guza in the 80's [1], video imagery has transformed the coastal monitoring practices [2]. It provides a continuous monitoring of physical factors (waves, water levels, run-up, ...) as well as morphological evolution (shoreline, sand bars position, topography, bathymetry) [3]. The pioneer Argus monitoring program was the first program to install ashore-based video monitoring system, after that several commercial video systems (e.g., CoastalComs) and specialized image-processing tools (VM4GIS [4], COSMOS [5]; BeachKeeper Plus [6], Waves'n see) have

been developed for scientific purposes. Although the use of these systems has expanded with the miniaturization and cost-effectiveness of cameras, there are challenges preventing widespread installation. These challenges include difficulties in finding suitable site infrastructures; expertise needed; and costs associated with system installation, operation and maintenance [2]. Surfcams have emerged as a potential alternative or complement to coastal imagery systems established for scientific use. They are relatively inexpensive camera systems, which may have either remote or onsite data acquisition, processing, and analysis, and they have been widely implemented for tourism, surfing, weather conditions, ... along all the world coastlines. Previous works in Australia [7–9], in Portugal [10], in the U.S. [11] have demonstrated the acceptable performance for coastal monitoring purposes. Recent works [12, 13] have shown that resolution improvement now allow quantitative studies of coastal morphologies, coastal hydrodynamics and real-time assessment of coastal responses during storm events. In this study, available surfcam systems along the Occitanie coast are used to examine the regional variability in coastal response during winter storms and post-storm recovery, using a beach width indicator obtained through the analysis of public webcam images on events, seasonal and multi-year time scales.

2 Field Site and Methods

The French coastline of the Occitanie (Fig. 1) is a low-lying coastal plain composed of a succession of lagoons, salted marshes, inlet beaches and dunes. Many storm impacts have been observed over recent decades: overwash, breaching of natural sand barriers, beach and dune erosion, damage to coastal infrastructure and facilities. The maximum spring tide has a 0.4 m range and wave energy is moderate with a mean H_s of 0.7 m. Storm waves have H_s over 3 m and can exceed 7 m (in 30 m water depth) and arrive mainly from ESE (77%). Major storm events are often associated with marine winds, generating storm surges that can exceed +0.85 m.

Along this coastline, several webcams have been installed in recent years, some of which offer high resolution and optimal positioning/views for beach monitoring purposes. In this study, we utilized images from 10 cameras (Fig. 1) owned by the local collectivities, tourism offices, and operated by Viewsurf or Skaping companies, acquired during the period 2021–2023. This video data is processed using @Matlab: Images are averaged and then georeferenced into Lambert 93 system using ground control points, obtained through GPS surveys. Subsequently, the shoreline is identified using an algorithmic method that detects pixel intensity and delineates the sand/water boundary. Video-derived estimations of shoreline position were used to compute weekly average beach widths (BW) for the midterm analysis and daily BW for storm event analyses. Validation was carried out by confronting video-derived shorelines to GPS surveys on the beach, resulting in a mean RMS error under 2 m in the vicinity of the webcam system where beach width was analyzed. Morphology of the different sites was extracted from the available Lidar data: Litto3D data for the Northern sites (Valras, Narbonne, Gruissan and La Franqui), and the OBSCAT 2023 Lidar survey for the southern sites.

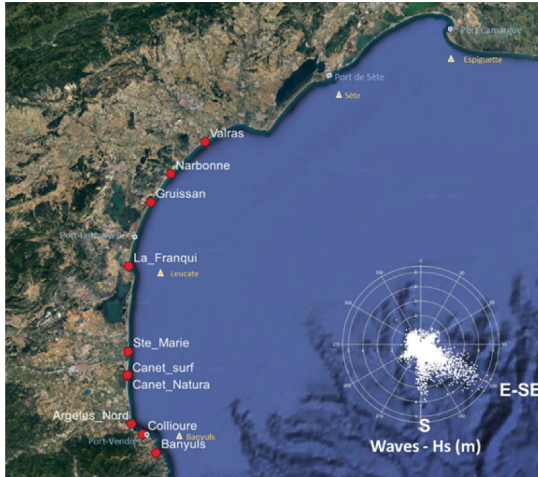


Fig. 1. Left: Study area with the location of used webcam systems as well as hydrodynamic measurements (Candhis wave and Data-Shom water level monitoring networks).

3 Results

3.1 Hydrodynamic Condition During the Studied Period

Hydrodynamic conditions during the studied period (2021–2023) were relatively calm (Fig. 2). Significant wave height at Leucate Buoy remained very low (under 2 m) during the entire period, except during two storm events: Celia storm in March 2022 and a second event in Feb 2023. Both events were ESE oriented with H_s exceeding 5 m.

3.2 Beach Width Seasonal Evolution

Video derived shorelines allow to compute beach width at all sites from January 2022 to May 2023 (Fig. 2). This dataset evidences different morphological behavior of the sites that have not been evidenced before:

- Very stable sites: Collioure, Banyuls, Argeles, Sainte-Marie where no seasonal variation is observed, and where BW is only decreasing during storms when the water level is increased;
- Sites where an increase in BW is observed during summer and a decrease during winter: Narbonne, La Franqui, Valras, Canet;
- A site with saw-like evolution: Gruissan where evolution seems to be mainly driven by storm events that generate strong shoreline retreat followed by a very long recovery period lasting to the successive event.

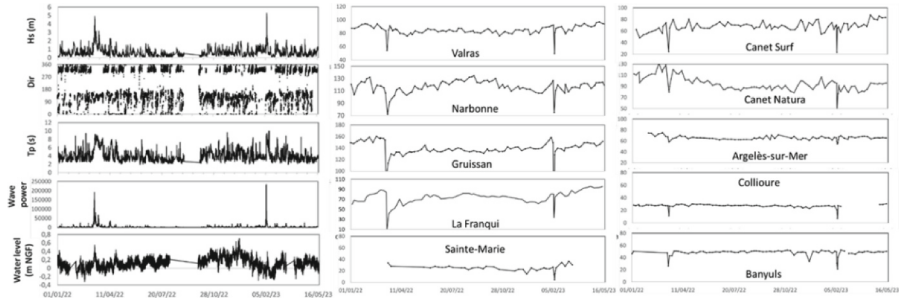


Fig. 2. Hydrodynamic conditions during the studied period (left): Waves at Leucate buoy (@CAN-DHIS) and water level at Port-La-Nouvelle (Data-Shom) and video-derived beach width time series at the studied sites (middle and right).

3.3 Beach Width Variation During Storm Events

The video-derived shorelines during the events can provide different indicators (Fig. 3): the maximum retreat is a proxy for beach inundation as the detected shoreline results mainly from the storm surge level rather than coastal erosion; the difference in BW just before/after that indicate the real shoreline retreat.

Results indicate that the behavior during the two studied events was similar in terms of global morphological responses. Pre/post-storm BW decrease was slightly stronger during Celia storm that was characterized by a higher water level (exceeding 0.6 m). The most important beach width decrease was observed at Gruissan and La Franqui sites with value of shoreline retreat exceeding 15 m, while other sites exhibited a moderate shoreline retreat (few meters). The recovery period was very rapid (from 1 to 3 days at almost all sites, excepted Gruissan and La Franqui where it took several months for the beach to recover its initial width. The recovery was much quicker for the 2023 event at Narbonne, Gruissan, La Franqui and Argelès.

At the peak of the events, the maximum beach inundation was also very different from site to site: Gruissan and La Franqui were widely inundated with a BW decrease exceeding 120 m at Gruissan and 70 m at La Franqui, corresponding to 85% of their total width. The northern sites (Valras and Narbonne) and the Roussillon sites (Sainte-Marie to Argelès) exhibited moderate beach inundation with a BW decrease around 40 m corresponding to 40 to 60% of their total width. Pocket beaches of the Cote Vermeille (Banyuls and Collioure) had a low BW decrease.

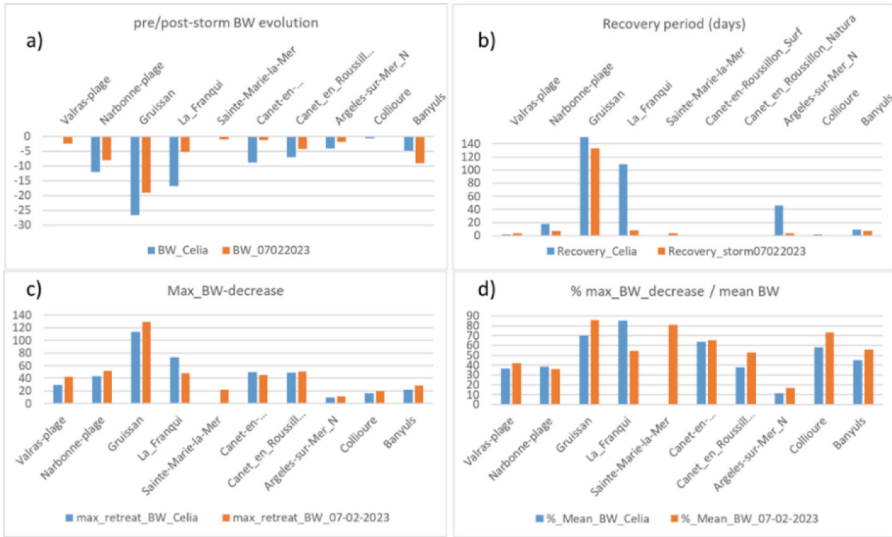


Fig. 3. BW evolution associated with the 2 storm events of March 2022 and Feb 2023. a) pre-post-storm BW variation (m); b) recovery period (days); c) max BW decrease (inundation) and d) percentage of inundated beach.

4 Discussion and Concluding Remarks

4.1 The Use of Webcams for Coastal Monitoring

In this study, webcams with varying resolution, frequencies, acquisition processes were used to obtain shoreline positions at two different timescales: seasonal and event-based. Across all sites, the necessary indicators were obtained at a frequency of 2–3 shorelines per day during the storms and weekly for the mid-term analysis. This underscores the significant potential of such systems for coastal monitoring at timescale and resolution not achievable through other monitoring techniques (such as field survey or satellite imagery, etc.). Despite the ongoing requirement for a high level of expertise (including image extraction from the video, motion correction, and photogrammetry), these webcam systems offers a very low cost-effective solution for costal monitoring that is easier to maintain compared to dedicated systems with higher capabilities but also higher costs. The widespread deployment of coastal webcams provides access to regional monitoring networks (such as Webcam in the US, DUSEK *et al.*, 2019), complementing existing field monitoring programs of coastal observatories. Furthermore, the rapid advancement in imagery processing now enables the coastal community, managers, and civil security services to stay informed about real-time coastal erosion and inundation conditions.

4.2 Regional Assessment Using Public Webcams of the Role of Post-Storm Recovery in the Seasonal Variability of Beach Width

While the results suggest that storm events were adequately spaced to facilitate beach recovery and that response variability primarily stems from pre-storm morphology, a

series of events in autumn 2023 raises concerns about this recovery capacity. This highlights the potential significant impact of singular events on medium- and long-term coastal evolution trends.

These preliminary observations necessitate further data collection under varying storm conditions to better understand and anticipate morphological events. Establishing a coastal monitoring network using webcams could greatly enhance our understanding and management of coastal areas.

References

1. Holman RA, Guza RT (1984) Measuring run-up on a natural beach. *Coast Eng* 8:129–140
2. Dusek G et al (2019) WebCAT: piloting the development of a web camera coastal observing network for diverse applications. *Front Mar Sci* 6:353
3. Holman RA, Stanley J (2007) The history and technical capabilities of Argus. *Coast Eng* 2007(54):477–491
4. Rihouey D, Dugor J, Dailloux D, Morichon D (2009) Application of remote sensing video systems to engineering works monitoring. *J Coast Res* 56:1582–1586
5. Taborda R, Silva A (2012) COSMOS: a lightweight coastal video monitoring system. *Comput Geosci* 2012(49):248–255
6. Brignone M, Schiaffino CF, Isla F, Ferrarri MA (2012) A system for beach video-monitoring: beachkeeper plus. *Comput Geosci* 49:53–61
7. Splinter KD, Strauss DR, Tomlinson RB (2011) Assessment of post-storm recovery of beaches using video imaging techniques: a case study at gold coast, Australia. *IEEE Trans Geosci Remote Sens* 49:4704–4716
8. Mole MA, Mortlock TRC, Turner IL, Goodwin ID, Splinter KD, Short AD (2013) Capitalizing on the surfcam phenomenon: a pilot study in regional-scale shoreline and inshore wave monitoring utilizing existing camera infrastructure. *J Coast Res* 2:1433–1438
9. Bracs MA et al (2016) Evaluation of opportunistic shoreline monitoring capability utilizing existing “Surfcam” infrastructure. *J Coast Res* 32(3):542–554
10. Andriolo U, Sanchez-Garcia E, Taborda R (2019) Operational use of surfcam online streaming images for coastal morphodynamic studies. *Remote Sens*
11. Conlin MP, Adams PP, Wilkinson B, Dusek G, Palmsten ML, Brown JA (2020) SurfRCaT: a tool for remote calibration of pre-existing coastal cameras to enable their use as quantitative coastal monitoring tools. *SoftwareX* 12:100584
12. Valentini N, Balouin Y, Bouvier C (2020) Exploiting the capabilities of surfcams for coastal morphodynamics analysis. *J Coast Res* 95:1333–1338
13. Valentini N, Balouin Y (2020) Assessment of smartphone-based camera system for coastal image segmentation and Sargassum monitoring. *J Mar Sci Env* 8(1):23

Open Access This chapter is licensed under the terms of the Creative Commons Attribution 4.0 International License (<http://creativecommons.org/licenses/by/4.0/>), which permits use, sharing, adaptation, distribution and reproduction in any medium or format, as long as you give appropriate credit to the original author(s) and the source, provide a link to the Creative Commons license and indicate if changes were made.

The images or other third party material in this chapter are included in the chapter's Creative Commons license, unless indicated otherwise in a credit line to the material. If material is not included in the chapter's Creative Commons license and your intended use is not permitted by statutory regulation or exceeds the permitted use, you will need to obtain permission directly from the copyright holder.

