



**HAL**  
open science

# Past and future discharge and stream temperature at high spatial resolution in a large European basin (Loire basin, France)

Hanieh Seyedhashemi, Florentina Moatar, Jean-Philippe Vidal, Dominique Thiéry

## ► To cite this version:

Hanieh Seyedhashemi, Florentina Moatar, Jean-Philippe Vidal, Dominique Thiéry. Past and future discharge and stream temperature at high spatial resolution in a large European basin (Loire basin, France). *Earth System Science Data : Papers in open discussion*, 2023, 10.5194/essd-2022-451 . hal-03948520

**HAL Id: hal-03948520**

**<https://brgm.hal.science/hal-03948520>**

Submitted on 20 Jan 2023

**HAL** is a multi-disciplinary open access archive for the deposit and dissemination of scientific research documents, whether they are published or not. The documents may come from teaching and research institutions in France or abroad, or from public or private research centers.

L'archive ouverte pluridisciplinaire **HAL**, est destinée au dépôt et à la diffusion de documents scientifiques de niveau recherche, publiés ou non, émanant des établissements d'enseignement et de recherche français ou étrangers, des laboratoires publics ou privés.



# Past and future discharge and stream temperature at high spatial resolution in a large European basin (Loire basin, France)

Hanieh Seyedhashemi<sup>1,2</sup>, Florentina Moatar<sup>1</sup>, Jean-Philippe Vidal<sup>1</sup>, and Dominique Thiéry<sup>3</sup>

<sup>1</sup>INRAE, UR RiverLy, 5 rue de la Doua CS 20244, 69625 Villeurbanne, France

<sup>2</sup>EA 6293 GéoHydrosystèmes COntinentaux, Université François-Rabelais de Tours, Parc de Grandmont, 37200 Tours, France

<sup>3</sup>BRGM, Bureau de Recherches Géologiques et Minières, BP 6009 45060 Orléans Cedex 2, France

**Correspondence:** Hanieh Seyedhashemi (hanieh.seyedhashemi@inrae.fr)

## Abstract.

This paper presents retrospective simulations and future projections of daily time series of discharge and stream temperature for 52 278 reaches over the Loire River basin ( $10^5$  km<sup>2</sup>) in France, using a physical process-based thermal model coupled with a hydrological model. Retrospective simulations over the 1963–2019 are based on the Safran meteorological reanalysis over France. 21st century projections are based on a subset of the DRIAS2020 ensemble projection dataset, derived from the Euro Cordex data set through the ADAMONT statistical bias correction. Such a dataset at this large scale and high spatial resolution stands out from existing datasets, and is the first one in France derived from a physical process-based thermal model. The dataset is freely available for other studies and can be downloaded as NetCDF format from <https://doi.org/10.57745/LBPGFS> (Seyedhashemi et al., 2022a).

## 10 1 Introduction

Stream (water) temperature ( $T_w$ ) is a critical parameter affecting the eutrophication of water bodies (Minaudo et al., 2018; Le Moal et al., 2019; Zhao et al., 2022), a wide range of biogeochemical processes (Ouellet et al., 2020), the life cycle (Elliott and Elliott, 2010) and spatial distribution of aquatic organisms (Cox and Rutherford, 2000; Morales-Marín et al., 2019; Picard et al., 2022). Recent evidence suggests the worldwide rise in this critical parameter due to climate change over the past decades (e.g. Moatar and Gailhard, 2006; Orr et al., 2015; Arora et al., 2016; Michel et al., 2020; Seyedhashemi et al., 2022b), which is also anticipated to continue in the future (e.g. Kwak et al., 2017; Carlson et al., 2017; Seixas et al., 2018; Du et al., 2019; Lee et al., 2020; Piotrowski et al., 2021; Michel et al., 2021). However, missing continuous long-term  $T_w$  data at a large scale over the past and future (Nelson and Palmer, 2007; Webb et al., 2008; Arora et al., 2016) has limited our understanding of large-scale controlling factors and spatio-temporal variability of thermal regimes, and of the impacts of such a variability on stream ecosystems in light of climate change (Hannah and Garner, 2015).

To overcome the lack of  $T_w$  data and to understand how the thermal regime respond to the climate change, physically-based, or deterministic, models can be used (Dugdale et al., 2017). These models simulate and project  $T_w$  dynamics through a heat budget, accounting for energy exchanges and effects of landscape characteristics on energy transfer (Sinokrot et al., 1995;



Webb and Walling, 1997; Yearsley, 2009; van Vliet et al., 2013; Beaufort et al., 2016b). Depending on the input data, these  
25 models can be run at different temporal resolution and spatial scales, ranging from small streams to large rivers (Dugdale  
et al., 2017). The outputs of these models allow detecting past and future changes in rivers' thermal regime and exploring the  
influence of hydroclimatic – i.e. air temperature ( $T_a$ ) and discharge ( $Q$ ) – and basin drivers on such changes (see recent studies  
e.g. Seyedhashemi et al., 2022b; Michel et al., 2021). For example, Seyedhashemi et al. (2022b), using a physical process-  
based thermal model, found that  $T_w$  increased faster than air temperature over the past recent decades, and attributed such an  
30 increase in  $T_w$  to the increase in  $T_a$  and decrease in  $Q$ . They also found the greatest increase in large rivers, while riparian  
shading mitigated the increase in  $T_w$  in small mountainous streams. Additionally, climate-induced changes in  $T_w$  could also  
help us to predict the vulnerability of aquatic species to climate change (Lee et al., 2020).

This paper, using outputs of the T-NET physical process-based thermal model coupled with the EROS semi-distributed  
hydrological model, presents daily time series of  $Q$  and  $T_w$  from the past to future at the reach scale over the Loire River  
35 basin ( $10^5$  km<sup>2</sup>), one of the largest in Europe. Section 2 briefly describes how such a dataset was produced using the above  
models. Retrospective simulations based on the Safran reanalysis over the 1963–2019 period are then presented in Sec. 3.1.  
Future  $Q$  and  $T_w$  projections derived from the DRIAS2020 climate projection dataset, are then presented in Sec. 3.2. Note that  
retrospective simulations have also been commented previously by Seyedhashemi et al. (2022b).

## 2 Methodology for retrospective simulation and projections

### 40 2.1 Hydrological and thermal models

We use the 1-D Temperature-NETwork (T-NET) physical process-based thermal model coupled with the EROS semi-distributed  
hydrological model to estimate daily  $Q$  and  $T_w$  for 52 278 reaches (median length=1.3 km) over the Loire River basin in France,  
one of the largest in Europe ( $10^5$  km<sup>2</sup>). The EROS model uses daily air temperature ( $T_a$ ), precipitation ( $P$ ) and potential evap-  
otranspiration ( $PET$ ) to simulate daily streamflow ( $Q$ ) at the outlet of 368 homogeneous sub-basins (see Figure 1, top panel,  
45 middle). Then, through a routine in the T-NET model,  $Q$  is redistributed along the river network inside each sub-basin ac-  
cording to the each reach drainage area. The T-NET model uses these estimated  $Q$ ,  $T_a$ , shortwave net solar radiation ( $H_{ns}$ ),  
longwave radiation ( $H_{la}$ ), specific humidity ( $RH$ ), and wind velocity ( $W$ ) at hourly time step to estimate hourly  $T_w$  at each  
reach by solving the local heat budget, while accounting for thermal propagation and confluence mixing. Finally, hourly out-  
puts of T-NET ( $Q$  and  $T_w$ ) are averaged at the daily scale. Models used here do not consider the influence of water-abstractions  
50 and impoundments i.e. simulate natural  $Q$  and  $T_w$  time series.

Detailed information on models principles, input data, calibration and validation can be found in Thiéry and Moutzopoulos  
(1995); Thiéry (2018) and shortly in Seyedhashemi et al. (2022b) for EROS, and Beaufort et al. (2016a); Loicq et al. (2018);  
Seyedhashemi et al. (2022b) for T-NET. For both EROS and T-NET, meteorological data (i.e.  $T_a$ ,  $P$ ,  $PET$ ,  $H_{ns}$ ,  $H_{la}$ ,  $RH$   
and  $W$ ) for retrospective simulations (1963–2019) and projections (1976–2100) come from from different datasets described  
55 below. Nevertheless, meteorological datasets share the same 8-km grid resolution. All reaches within a grid cell are assigned  
meteorological data values in that grid cell. For reaches flowing through more than one grid cell, meteorological variables



are weighted by the relative length of the reach within each grid cell (Seyedhashemi et al., 2020). Figure 1 summarises the methodology of reconstruction and projections of daily Q and Tw over the Loire River basin. Figure 2 shows the data availability for the different simulations.

## 60 2.2 Retrospective simulation (1963–2019)

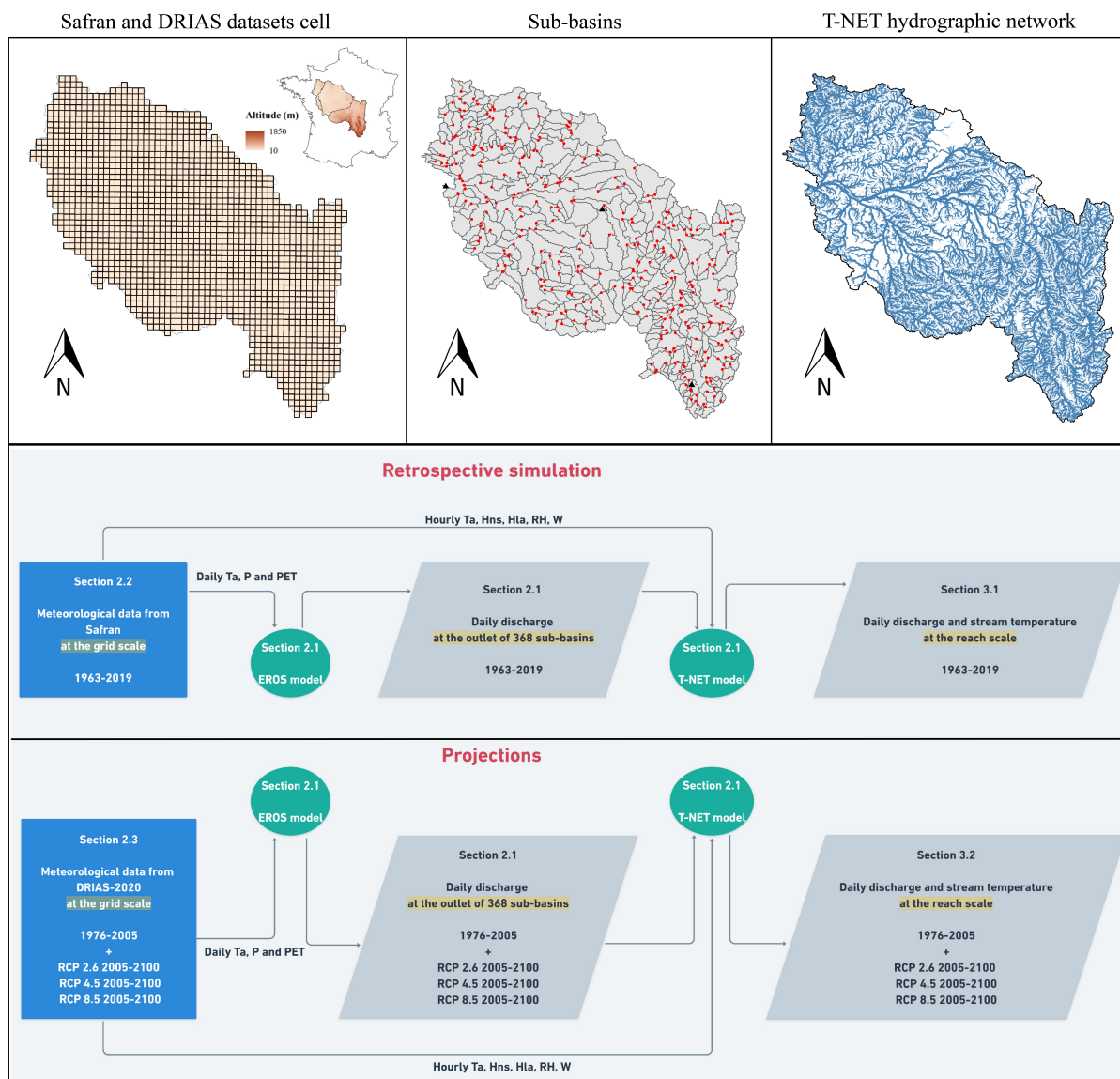
To reconstruct daily time series of Q and Tw over the past decades, the meteorological data provided by the 8 km gridded Safran atmospheric reanalysis data (Quintana-Segui et al., 2008; Vidal et al., 2010) released by Météo-France are used (see retrospective simulation in Figure 1). Seyedhashemi et al. (2022b) already used this set-up and resulting outputs to estimate the magnitude of past trends in Q and Tw at the seasonal and annual scales. Figure 2 shows the period concerned by this  
65 retrospective simulation. EROS had been calibrated over 1974–2018 to maximize the number of streamflow observations, with 1971–1974 used for the warm-up. The calibration optimized all unknown parameters (soil capacity, recession times, and propagation times) through maximizing the Nash-Sutcliffe Efficiency (NSE) criterion on the square root of streamflow and minimizing the overall bias (Seyedhashemi et al., 2022b, see)

## 2.3 Projections (1976–2100)

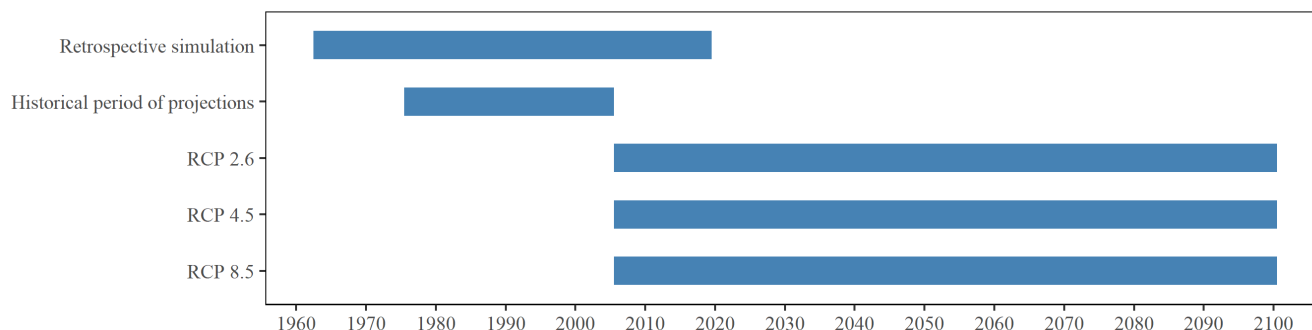
70 The DRIAS2020 climate projection dataset (Soubeyroux et al., 2020) has been recently released over France through the DRIAS portal (see <http://www.drias-climat.fr/>). It comprises an ensemble of climate projections under 3 Representative Concentration Pathways used in the fifth IPCC Assessment Report (IPCC, 2014) derived from the larger EUROCORDEX dataset using Regional Climate Models (RCM) over Europe. This ensemble is downscaled over France to the 8-km Safran grid and bias-corrected with respect to the Safran reanalysis with the ADAMONT method (Verfaillie et al., 2017). In this study a subset of 3  
75 contrasted future projections (GCM+RCM) are used to sample the dispersion of the full ensemble of 12 GCM+RCM projections from the DRIA2020 dataset. The 3 selected projections include a warm and wet couple of models (IPSL-CM5A/MRWRWF381P), an intermediate one (CNRM-CM5-LR/ALADIN63), and a hot and dry couple (HadGEM2/CCLM4-8-17).

All these three GCM/RCMs include RCP 4.5 and 8.5, which are intermediate and extreme scenarios corresponding to a plausible representation of the future behavior of human societies. The CNRM-CM5-LR/ALADIN63 model also includes RCP 2.6.  
80 Therefore, the projections are conducted under 7 projections in total (total = (2 GCM/RCMs × 2 RCPs) + (1 GCM/RCM × 3 RCP) = 7 projections). For each GCM/RCMs, there are two periods of data: 1) the period with GCMs forced by historical concentrations in greenhouse gases between 1976 and 2005, and 2) the projection part using RCPs as forcings, which extends from 2005 to 2100 (see Table 1, and projections in Figure 1 and Figure 2). It should be noted that, although selected GCM/RCMs have data from the 1950s, both hydrological and thermal models in the current study are used from the 1970s, onwards.

85 The meteorological variables provided by these 7 projections are integrated into both the EROS and T-NET models as explained in section 2.1 (see also Figure 1). Both the EROS and T-NET models are run under present land cover/land use while calibrated parameters of EROS are kept as for the retrospective simulation (see Seyedhashemi et al. (2022b) for short description of calibration). The EROS model is first executed to produce daily Q under each projection over the historical period (1976–2005) and the future (2005–2100). Indeed, for each projection, the EROS model is run from the 1976 to the 2100



**Figure 1.** Synthetic diagram showing the methodology of retrospective simulation and projections of daily Q and Tw over the Loire River basin. The top panel shows the spatial resolution of input data in each step. The red circle points show the outlets of 368 sub-basins. The three black triangle points show the position of sub-basin examples in the southern (L'Allier at Monistrol-d'Allier), middle (L'Arnon at Méreau [Pont de Méreau]) and northern part (La Loire at Montjean) of the basin used in the text. Solid black lines show the three main Hydro-Ecoregion (HER) delineations in the basin identified by Wasson et al. (2002) through grouping homogeneous areas in terms of land use/land cover, geology, and climate conditions (see Figure 1 of Seyedhashemi et al., 2022b).



**Figure 2.** Period of available daily Q and Tw data for retrospective simulation and projections.

**Table 1.** The GCM/RCMs and RCPs used in current study study. More information can be found in <http://www.drias-climat.fr/>.

GCM	RCM	HISTO	RCP 2.6	RCP 4.5	RCP 8.5	Data period
<b>IPSL-CM5-MIR</b> Dufresne et al. (2013) Hourdin et al. (2013)	<b>WRF381P</b> Skamarock et al. (2008)	✓		✓	✓	1976-2005; 2006-2100
<b>CNRM-CM5</b> Voldoire et al. (2013)	<b>ALADIN63 V2</b> Colin et al. (2010) Bador et al. (2017)	✓	✓	✓	✓	1976-2005; 2006-2100
<b>HadGEM2-ES</b> Jones et al. (2011)	<b>CCLM4-8-17</b> Keuler et al. (2016)	✓		✓	✓	1976-2005; 2006-2099

90 while for RCPs of each GCM/RCM, the historical part (1976–2005) is the same (see projections in Figure 1, and Figure 2). Then, future daily Q and meteorological variables provided by GCM/RCMs are used in the T-NET thermal model to produce daily Tw under these future climate projections over the whole century (1976–2100). It should be noted that like projected Q, for RCPs of each GCM/RCM, projected Tw over the historical part (1976–2005) is the same (see projections in Figure 1, and see Figure 2).

### 95 3 Data assessment and overall description

Although the time series of both Q and Tw are available for the whole year, here, we mainly focus on June to August months (hereafter referred to as summer), the time of the year which is vital for the survival (Steel et al., 2017), growth and migration of aquatic communities (Arevalo et al., 2020).



### 3.1 Retrospective simulation (1963–2019)

#### 100 Streamflow

The performance of the EROS model in simulating daily  $Q$  over the Loire River basin was assessed in a previous paper (Seyedhashemi et al., 2022b). In a majority of calibration stations (75%), and stations on the French Reference Hydrometric Network (83%), the Nash-Sutcliffe efficiency of simulated daily  $Q$  is  $> 0.7$  for  $Q$ ,  $\ln(Q)$ , and  $\sqrt{Q}$ . At the seasonal scale and at natural calibration stations over the Loire River basin, the EROS model performed well at the annual scale while it slightly  
105 underestimated winter and spring  $Q$ , and overestimated summer and autumn  $Q$  (see Figure S6 Seyedhashemi et al., 2022b). Such an overestimation in  $Q$  over summer and autumn is attributed to the fact that EROS does not consider the influence of water abstractions and impoundments (see section 2.1). Significant correlations between seasonal  $Q$  trends in retrospective simulation against observations at hydrometric stations with long-term continuous daily data were noted (see Figure S10 Seyedhashemi et al., 2022b).

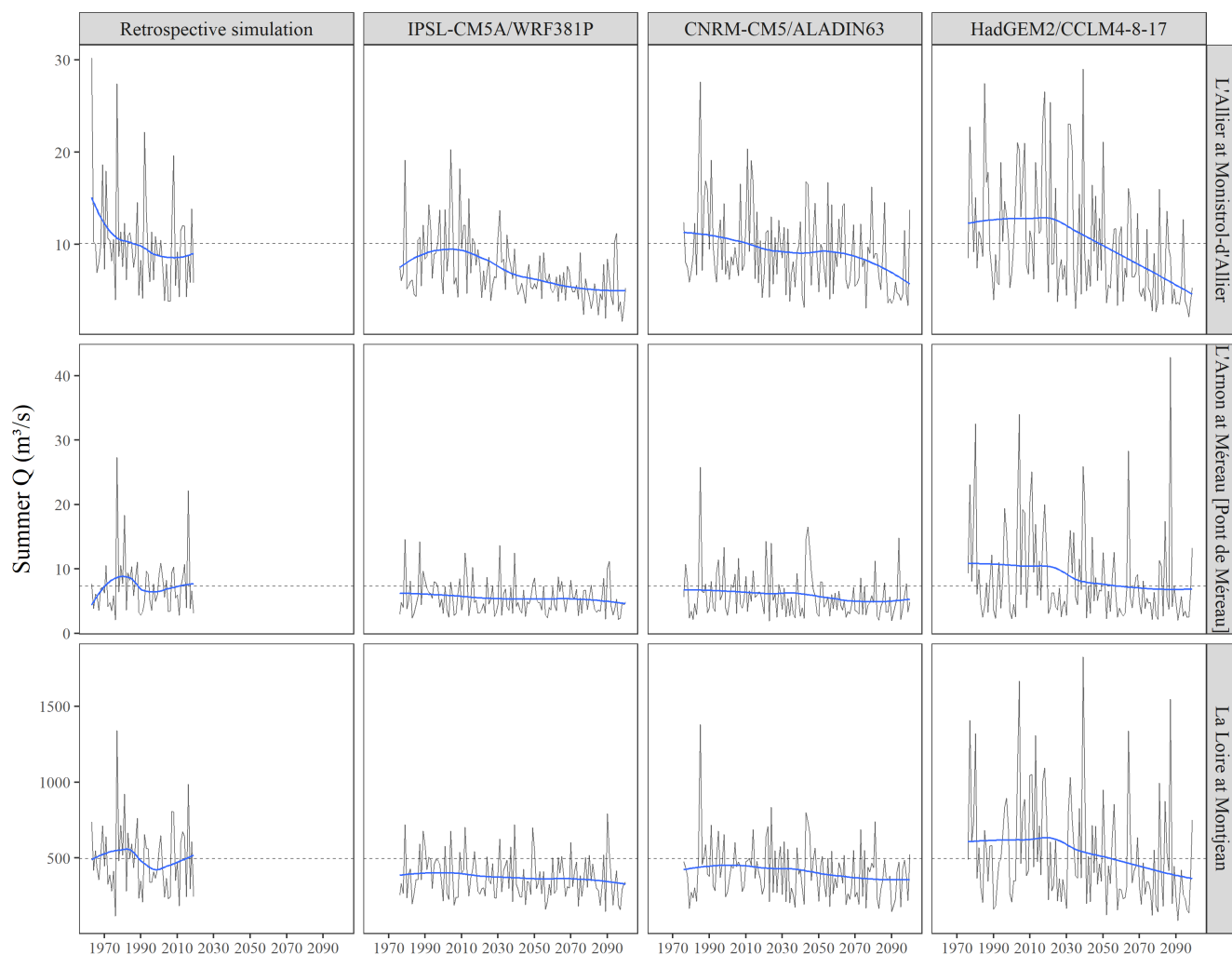
110 Lastly, decreasing  $Q$  trends were detected in the southern part of the basin (in the Massif central) over the 1963–2019 period (up to  $-16\%$ /decade) while mainly increasing  $Q$  trends was found in the remaining parts of the basin (see Figure 3 Seyedhashemi et al., 2022b). Figure 3, left panel, shows such a decrease in summer  $Q$  for a sub-basin in the southern part while summer  $Q$  is relatively stationary at the other two sub-basins in the middle and northern part. It should be noted EROS performed well in reconstructing daily  $Q$  at the outlet of these 3 sub-basins (see Figure S8 Seyedhashemi et al., 2022b).

#### 115 Stream temperature

A small underestimation in seasonal  $T_w$  on large rivers was found in a previous paper (see Figure S9 Seyedhashemi et al., 2022b). Indeed, 3%–83% stations (resp. 50%–100%) on small and medium (resp. large) rivers had a RMSE  $< 1^\circ\text{C}$  across seasons (see their Figure S9, bottom panel). At the seasonal and annual scales, a strong coherence and agreement between observations and reconstruction was also found for the four stations along the main stem of the Loire River with the long-term  
120 data (see Figure 2 Seyedhashemi et al., 2022b). A significant correlation between seasonal and annual  $T_w$  trends in retrospective simulations against observations were also found at  $T_w$  stations with long-term continuous daily data (see Figure S11 of Seyedhashemi et al., 2022b).

A  $T_w$  increase was also detected for almost all reaches in all seasons (mean= $+0.38^\circ\text{C}/\text{decade}$ ) over the 1963–2019. Indeed, the median summer  $T_w$  over the basin has increased by  $+0.44^\circ\text{C}/\text{decade}$  (i.e.  $+2.5^\circ\text{C}$  over the whole 1963–2019 period)  
125 (according to Seyedhashemi et al., 2022b). Such a consistent increase in summer  $T_w$  in retrospective simulations can be also seen in Figure 4, top panel. Nevertheless, the mean summer  $T_w$  in the retrospective simulation remains rather low ( $< 18^\circ\text{C}$ ) across the basin and only 14% of reaches in retrospective simulation have a summer  $T_w > 18^\circ\text{C}$  (Figure 5).

Figure 6, left panel shows a pretty good performance of the T-NET model in reconstructing daily  $T_w$  at the Avoine on the Loire River (uninfluenced by human impacts) in 2003, the hottest year in the recent period (Moatar and Gailhard, 2006; Bustillo  
130 et al., 2014; Seyedhashemi et al., 2022b). Although there is a good coherence between simulations and observations over the year (Bias= $0.7^\circ\text{C}$ ), an overestimation in simulation ( $2.5^\circ\text{C}$ ) is observed at the day with maximum daily  $T_w$ . Beaufort et al.

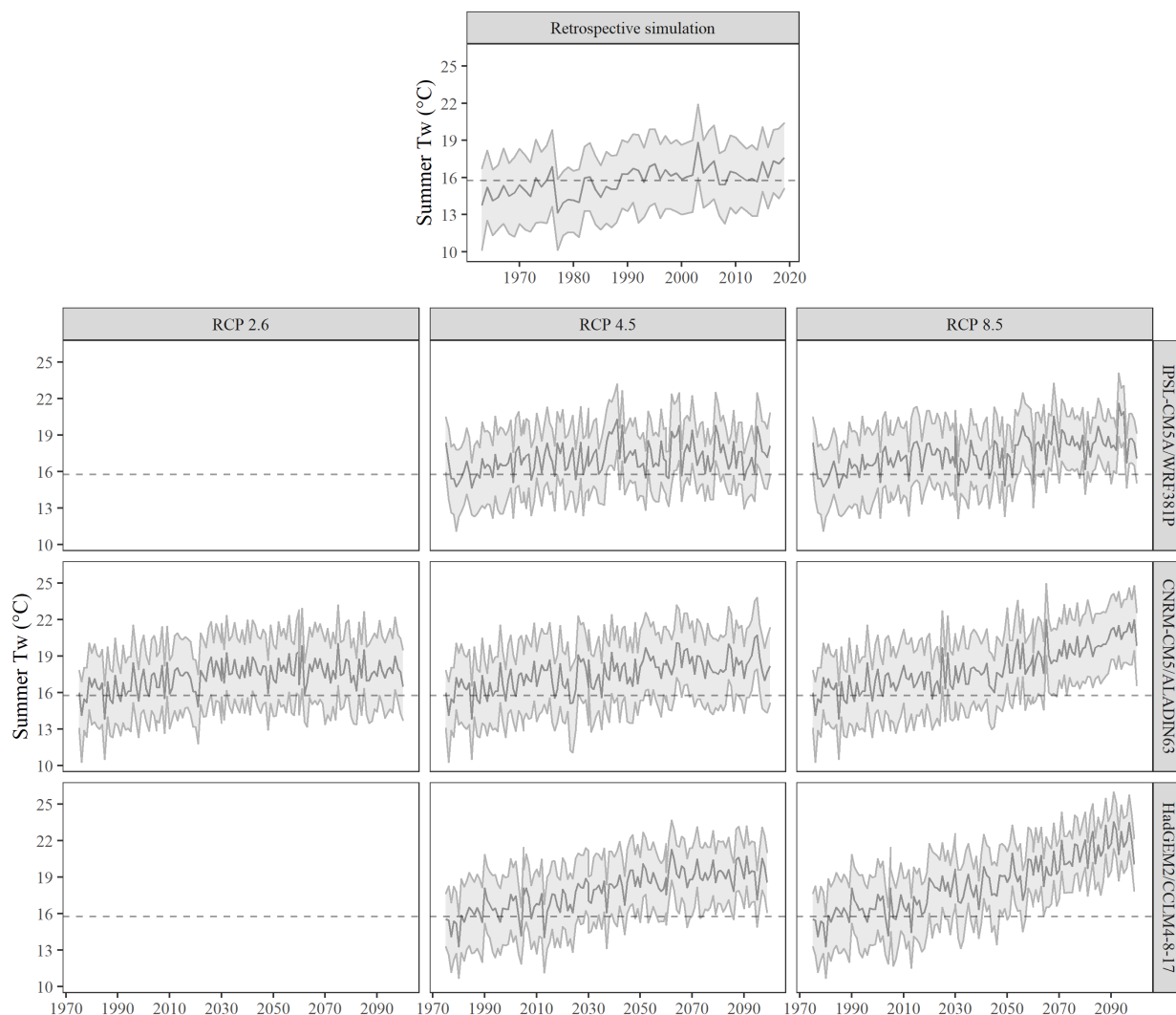


**Figure 3.** Summer Q in retrospective simulation and projections under RCP 8.5 for 3 sub-basins in the southern (L'Allier at Monistrol-d'Allier), middle (L'Arnon at Méreau [Pont de Méreau]) and northern part (La Loire at Montjean) of the Loire basin as shown in Figure 1, top panel. The dashed line represents the average of summer Q in the retrospective simulation over the 1963–2019 period. Blue lines show a locally weighted smoothing of the annual time series (span = 0.75).

(2016a) showed that the Root Mean Square Error (RMSE) of the T-NET model in simulating daily Tw was on average 1.60 °C at 128 natural stations with missing years over the 2008–2012 period over the Loire River basin. Over this basin, the RMSE of the T-NET model in simulating daily Tw at 275 natural stations with missing years over the 2008–2018 period (spotted through  
 135 “thermal signatures” approach in Seyedhashemi et al., 2020) is 1.80 °C.

In 2003, the majority of reaches (76 %) had a maximum daily Tw > 22 °C, and 49% of reaches showed maximum daily Tw > 24 °C (Figure 6, right panel). The maximum observed daily Tw in the downstream part of the Loire river at Avoine is



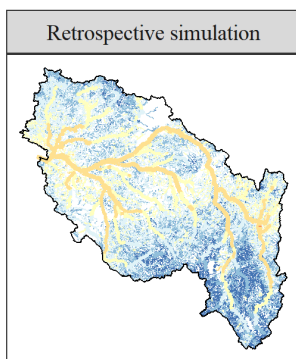


**Figure 4.** Time series of summer Tw in retrospective simulation and projections. The solid line and shaded area represent the median and the 10th-90th percentile band over all 52 278 reaches, respectively. The dashed lines show the average of the median summer Tw values (solid line) in the retrospective simulation over the 1963–2019 period.

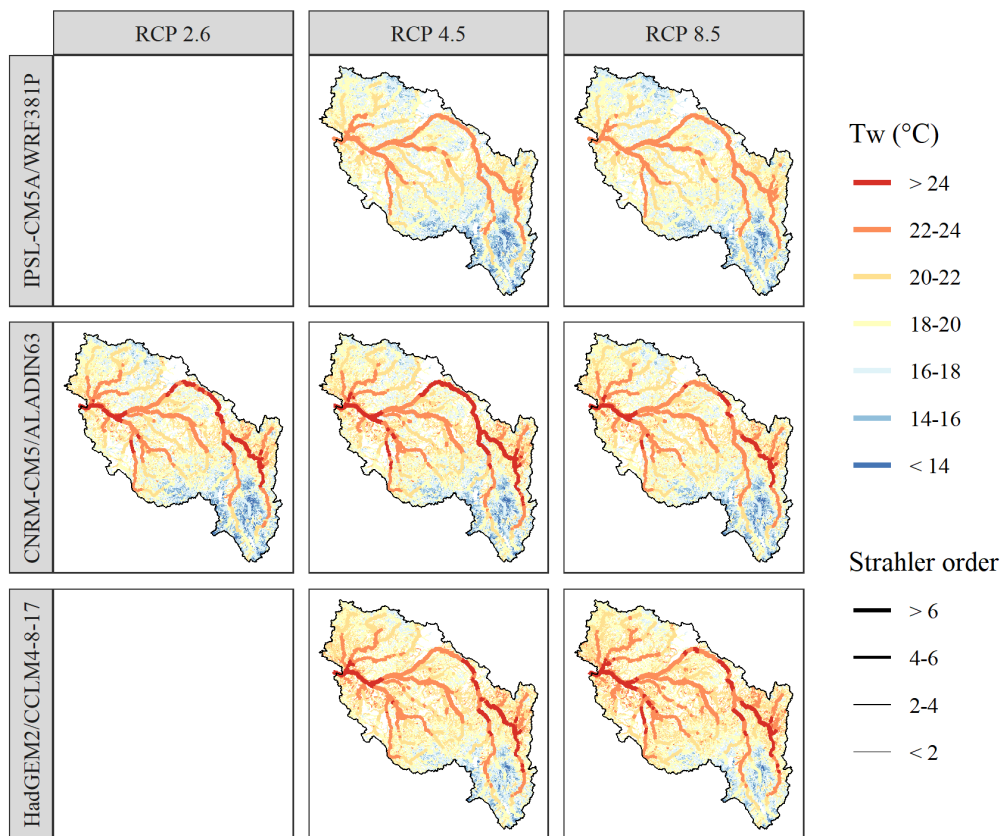
31 °C in 2003 (see Figure 6, left panel). Such a value is expected to be seen at rivers with low velocity and shallow water such as Avoine is located on a large river (SO=8). However, all of 470 reaches with at least one day with Tw > 31 °C in 2003 are not located on large rivers (see Figure 7). 57 % of such reaches have a Strahler order between 5 and 6, and 12 % have a Strahler order less than 5 (see Figure 7), indicating an overestimation maximum daily Tw.



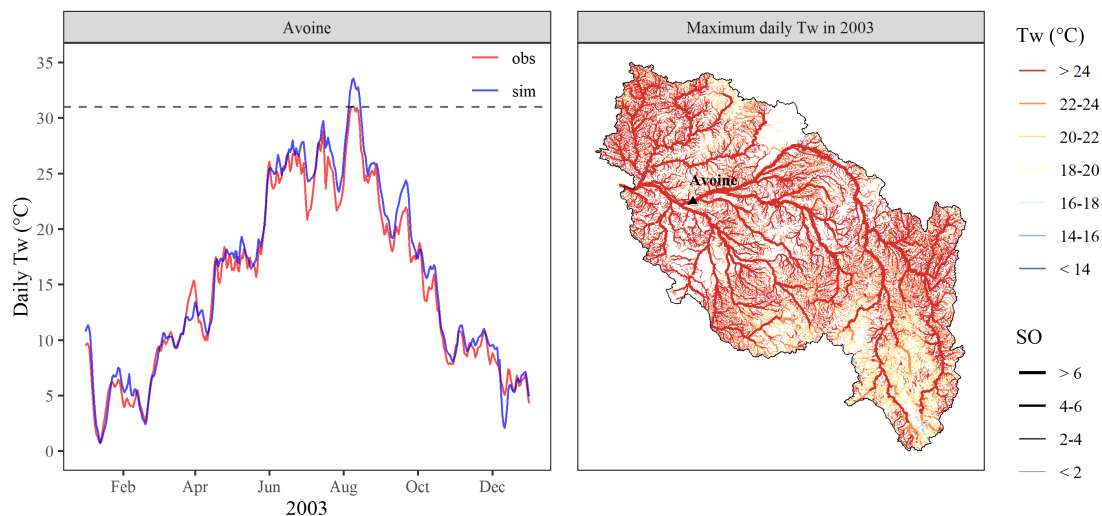
Mean summer Tw over the 1963-2019 period (°C)



Mean summer Tw over the 2040-2069 period (°C)



**Figure 5.** Spatial variability of summer Tw in the retrospective simulation over the 1963–2019 period and in projections for all GCM/RCMs under RCP 8.5 in the middle of century (2040–2069). Figure S2 presents the same spatial variability at the end of the century (2070–2099).



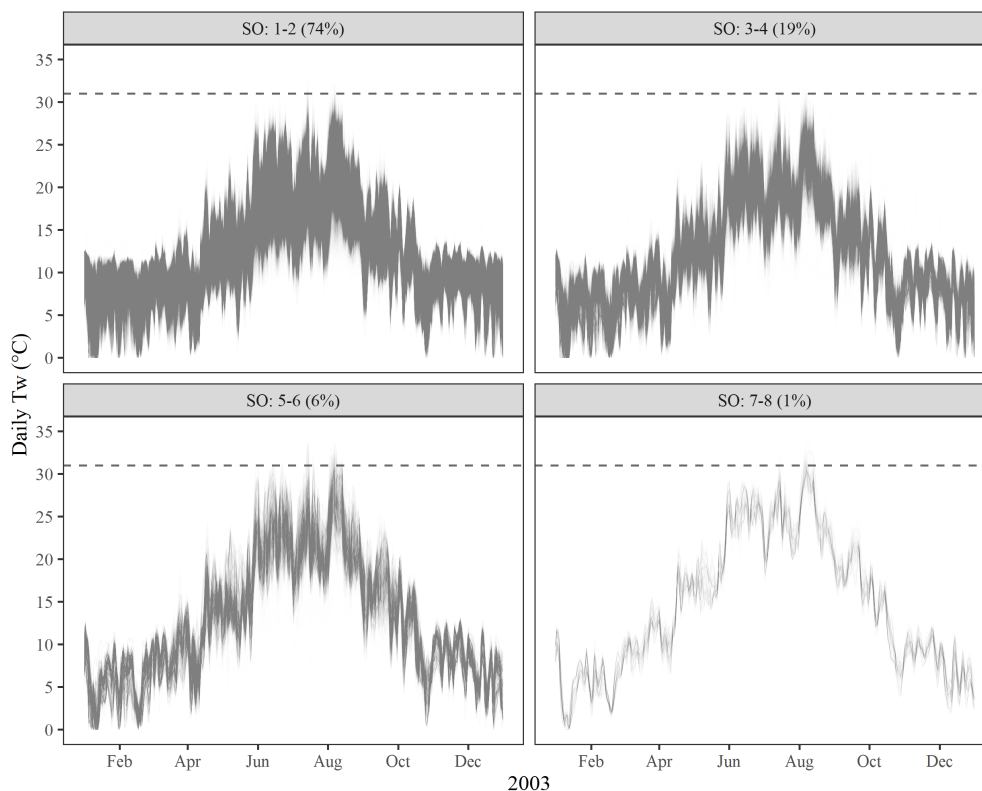
**Figure 6.** (left) Observed and simulated daily Tw at Avoine on the downstream part of the Loire River in 2003. The dashed line shows the maximum daily Tw over observed data at Avoine. (right) Simulated map of maximum daily Tw in 2003. The black triangle shows the position of Avoine on the Loire River. The line size shows the Strahler order of REACHED.

### 3.2 Projections (1976–2100)

#### Streamflow

In the southern (L'Allier at Monistrol-d'Allier) and northern part (La Loire at Montjean) of the basin, summer Q is decreasing in projections regardless of the GCM/RCM, with the largest decrease under the HadGEM2/CCLM4-8-17 model combination. However, such a decrease is limited in middle part of the basin (L'Arnon at Méreau [Pont de Méreau]) (Figure 3). Under the IPSL-CM5A/MRWF381P model, there is a north-to-south and increase-to-decrease gradient in the middle of the century (2040–2069) with respect to the present time (1990–2019) (Figure 8). There is also a decrease in the downstream part of the basin under the HadGEM2/CCLM4-8-17 model and to a lesser extent under the CNRM-CM5-LR/ALADIN63 model. However, under the later, increase in summer Q is observed in some parts in the south while under the HadGEM2/CCLM4-8-17 model, a decrease in summer Q is projected for the whole basin with the greatest decrease in the southern part of the basin (Figure 8).

Under RCP 8.5, the annual regime of projected Q will be also different from one GCM/RCM to another, and from one sub-basin to another (see Figure S1). For instance, at a sub-basin in the southern part of the basin (L'Allier at Monistrol-d'Allier), the highest Q is projected under the HadGEM2/CCLM4-8-17 model over spring while this happens over winter period under the IPSL-CM5A/MRWF381P model for a sub-basin in the northern part of the basin (La Loire at Montjean). Nevertheless, for both sub-basins, the annual regime of Q under the HadGEM2/CCLM4-8-17 model and RCP 8.5 shows that the lowflow period lasts longer (even until fall) compared to other two models.

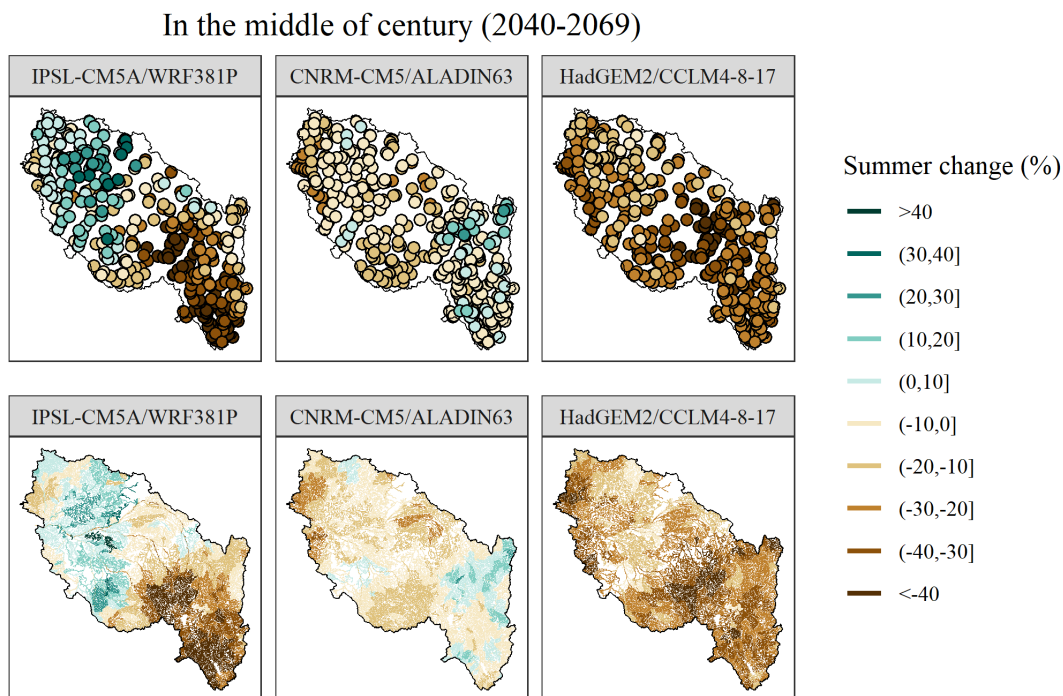


**Figure 7.** Simulated Tw for reaches with different Strahler orders (SO) in 2003. Each curve corresponds to Tw time series of one of the 52 278 reaches in the basin. The dashed line shows the maximum observed daily Tw at Avoine on the Loire River (see Figure 6) Figure 6, left panel is indeed an example of daily Tw time series shown in this figure, bottom right panel for  $OS \geq 7$ . Panel titles give the percentage of reaches within each SO class.

### Stream temperature

160 Time series of all reaches under all GCM/RCMs show a consistent increase in summer Tw from the past to future under RCP 8.5 (see Figure 4). Under this RCP, summer anomalies with respect to 1963-2019 ranges between 5.8°C and 7.8°C depending on GCM/RCMs, in average over the basin at the end of the century. Conversely, summer Tw under RCP 2.6 and 4.5 are more stable after 2050 (Figure 4). Nevertheless, under these two RCPs, anomalies from 2050 onwards are yet quite large (4.2 to 4.7°C depending on GCM/RCMs and RCP). These overall conclusions are exemplified in Figure S3.

165 Figure 5 shows a considerable increase in mean summer Tw in the middle of the century (2040–2069) compared to the retrospective simulation over the 1963–2019 period. Only 14 % of reaches had a mean summer Tw > 18°C while in the middle of century, 42-73 % of reaches exhibit a mean summer Tw > 18°C depending on the GCM/RCM and RCP. Indeed, the frequency of reaches with Tw > 18°C is increasing (57-96 % of reaches) towards the end of the century, with the exception of the IPSL-CM5A/MRWRF381P model under RCP 4.5 and the CNRM-CM5-LR/ALADIN63 model under RCP 2.6 (see Figure S2). For



**Figure 8.** Changes in summer Q with respect to the 1990–2019 period in the middle of the century (2040–2069) for all GCM/RCMs under RCP 8.5 (top) at the outlet of 368 sub-basins and (bottom) at the reach scale.

170 the three selected sub-basins, an increase in the frequency of days  $T_w > 25^\circ\text{C}$  is also found towards the end of the century regardless of GCM/RCM under RCP 8.5 with the largest values at the end of the century ( $> 50$  days; see Figure S4).

#### 4 Caveats

The Nash-Sutcliffe efficiency of reconstructed daily Q by the hydrological model was pretty good and  $> 0.7$  for Q,  $\ln(Q)$ , and  $\sqrt{Q}$  (Seyedhashemi et al., 2022b). Nevertheless, there was an overestimation in summer and fall Q (Seyedhashemi et al., 2022b) as the EROS hydrological model does not consider the influence of water-abstractions and impoundments. Therefore, the users should be careful with this on highly regulated rivers. On the other hand, The RMSE of the thermal model in simulating daily  $T_w$  at 275 natural stations with missing years over the 2008–2018 period was  $1.80^\circ\text{C}$ . An overestimation in reconstructed maximum daily  $T_w$  was also found at Avoine ( $2.5^\circ\text{C}$ ). However, at the seasonal scale, no systematic bias was found for  $T_w$  at the stations located on small and medium rivers, while there was a small underestimation in seasonal  $T_w$  on large rivers (see 180 Seyedhashemi et al., 2022b).



## 5 Conclusion

This data paper presented and described daily Q and Tw reconstructions over the 1963–2019 period as well as projections over the 1976–2100 period for 52 278 reaches over the Loire River basin ( $10^5$  km<sup>2</sup>) using a physical process-based T-NET thermal model coupled with the EROS hydrological model.

185 Daily Q and Tw are projected under three contrasted downscaled and bias-corrected climate projections (GCM/RCM) including warm and wet (IPSL-CM5A/MRWRF381P), intermediate (CNRM-CM5-LR/ALADIN63), and hot and dry (HadGEM2/CCLM4-8-17) models from the DRIAS-2020 dataset (Soubeyroux et al., 2020), under three Representative Concentration Pathways (RCPs) from the fifth report of IPCC (IPCC, 2014). All of these three GCM/RCMs were run under RCP4.5 and RCP8.5, and the CNRM-CM5-LR/ALADIN63 model was also run under RCP 2.6.

190 The potential applications of the proposed dataset over the past and future are manifold. This can be employed to understand spatio-temporal variability in Q and Tw, to assess the synchronicity of extremes (e.g. studies of Arismendi et al., 2013; Arevalo et al., 2020), to better explain and predict the possible spatial distribution of aquatic communities (e.g. study of Picard et al., 2022, who used the current dataset), and to assess the various stresses on freshwater habitat due to climate change (e.g. Lee et al., 2020).

## 195 6 Data availability

The daily Q and Tw in retrospective simulation over the 1963–2019 period and under 7 projections over the 1976–2100 period are available for T-NET hydrographic network (52 278 reaches) under the Attribution-NonCommercial 4.0 International (CC BY-NC 4.0) in NetCDF file format through: <https://doi.org/10.57745/LBPGFS> (Seyedhashemi et al., 2022a). Ta and other desired meteorological variables corresponding to each reach can be extracted from the closest grid cell to the reach of the 200 Safran reanalysis database (available upon request from Météo-France) for the retrospective simulation and of the DRIAS-2020 dataset for projections (see DRIAS: <http://www.drias-climat.fr/>, portail partenarial Météo-France, IPSL, Cerfacs, and Soubeyroux et al., 2020).

*Author contributions.* HS developed the dataset and prepared the manuscript. DT ran the EROS model and provided discharge data for both past and future. All co-authors contributed to the manuscript.

205 *Competing interests.* The authors declare that they have no conflict of interest.

*Acknowledgements.* The authors would like to thank Météo-France for providing the Safran reanalysis data. This work was performed in the course of a doctoral project at the University of Tours, funded by the European Regional Development Fund (Fonds Européen de

<https://doi.org/10.5194/essd-2022-451>  
Preprint. Discussion started: 12 January 2023  
© Author(s) 2023. CC BY 4.0 License.



développement Régional-FEDER), POI FEDER Loire (grant no. 2017-EX001784), Le plan Loire grandeur nature, AELB (Agence de l'eau Loire-Bretagne), INRAE (l'Institut national de recherche pour l'agriculture, l'alimentation et l'environnement), and EDF (Hynes team).



## 210 References

- Arevalo, E., Lassalle, G., Tétard, S., Maire, A., Sauquet, E., Lambert, P., Paumier, A., Villeneuve, B., and Drouineau, H.: An innovative bivariate approach to detect joint temporal trends in environmental conditions: Application to large French rivers and diadromous fish, *Science of the Total Environment*, 748, 141 260, <https://doi.org/10.1016/j.scitotenv.2020.141260>, 2020.
- Arismendi, I., Safeeq, M., Johnson, S. L., Dunham, J. B., and Haggerty, R.: Increasing synchrony of high temperature and low flow in western North American streams: double trouble for coldwater biota?, *Hydrobiologia*, 712, 61–70, <https://doi.org/10.1007/s10750-012-1327-2>, 2013.
- Arora, R., Tockner, K., and Venohr, M.: Changing river temperatures in northern Germany: trends and drivers of change, *Hydrological Processes*, 30, 3084–3096, <https://doi.org/10.1002/hyp.10849>, 2016.
- Bador, M., Terray, L., Boe, J., Somot, S., Alias, A., Gibelin, A.-L., and Dubuisson, B.: Future summer mega-heatwave and record-breaking temperatures in a warmer France climate, *Environmental Research Letters*, 12, 074 025, <https://doi.org/https://doi.org/10.1088/1748-9326/aa751c>, 2017.
- Beaufort, A., Curie, F., Moatar, F., Ducharne, A., Melin, E., and Thiéry, D.: T-NET, a dynamic model for simulating daily stream temperature at the regional scale based on a network topology, *Hydrological Processes*, 30, 2196–2210, <https://doi.org/10.1002/hyp.10787>, 2016a.
- Beaufort, A., Moatar, F., Curie, F., Ducharne, A., Bustillo, V., and Thiéry, D.: River temperature modelling by Strahler order at the regional scale in the Loire River basin, France, *River Research and Applications*, 32, 597–609, <https://doi.org/https://doi.org/10.1002/rra.2888>, 2016b.
- Bustillo, V., Moatar, F., Ducharne, A., Thiéry, D., and Poirel, A.: A multimodel comparison for assessing water temperatures under changing climate conditions via the equilibrium temperature concept: case study of the Middle Loire River, France, *Hydrological Processes*, 28, 1507–1524, <https://doi.org/https://doi.org/10.1002/hyp.9683>, 2014.
- Carlson, A. K., Taylor, W. W., Hartikainen, K. M., Infante, D. M., Beard, T. D., and Lynch, A. J.: Comparing stream-specific to generalized temperature models to guide salmonid management in a changing climate, *Reviews in Fish Biology and Fisheries*, 27, 443–462, <https://doi.org/https://doi.org/10.1007/s11160-017-9467-0>, 2017.
- Colin, J., Déqué, M., Radu, R., and Somot, S.: Sensitivity study of heavy precipitation in Limited Area Model climate simulations: influence of the size of the domain and the use of the spectral nudging technique, *Tellus A: Dynamic Meteorology and Oceanography*, 62, 591–604, <https://doi.org/https://doi.org/10.1111/j.1600-0870.2010.00467.x>, 2010.
- Cox, T. J. and Rutherford, J. C.: Predicting the effects of time-varying temperatures on stream invertebrate mortality, *New Zealand Journal of Marine and Freshwater Research*, 34, 209–215, <https://doi.org/10.1080/00288330.2000.9516927>, 2000.
- Du, X., Shrestha, N. K., and Wang, J.: Assessing climate change impacts on stream temperature in the Athabasca River Basin using SWAT equilibrium temperature model and its potential impacts on stream ecosystem, *Science of the Total Environment*, 650, 1872–1881, <https://doi.org/10.1016/j.scitotenv.2018.09.344>, 2019.
- Dufresne, J.-L., Foujols, M.-A., Denvil, S., Caubel, A., Marti, O., Aumont, O., Balkanski, Y., Bekki, S., Bellenger, H., Benshila, R., et al.: Climate change projections using the IPSL-CM5 Earth System Model: from CMIP3 to CMIP5, *Climate dynamics*, 40, 2123–2165, <https://doi.org/https://doi.org/10.1007/s00382-012-1636-1>, 2013.
- Dugdale, S. J., Hannah, D. M., and Malcolm, I. A.: River temperature modelling: A review of process-based approaches and future directions, *Earth-Science Reviews*, 175, 97–113, <https://doi.org/10.1016/j.earscirev.2017.10.009>, 2017.





- Elliott, J. and Elliott, J.: Temperature requirements of Atlantic salmon *Salmo salar*, brown trout *Salmo trutta* and Arctic charr *Salvelinus alpinus*: predicting the effects of climate change, *Journal of fish biology*, 77, 1793–1817, <https://doi.org/https://doi.org/10.1111/j.1095-8649.2010.02762.x>, 2010.
- Hannah, D. M. and Garner, G.: River water temperature in the United Kingdom: changes over the 20th century and possible changes over the 21st century, *Progress in Physical Geography*, 39, 68–92, <https://doi.org/10.1177/2F0309133314550669>, 2015.
- Hourdin, F., Foujols, M.-A., Codron, F., Guemas, V., Dufresne, J.-L., Bony, S., Denvil, S., Guez, L., Lott, F., Ghattas, J., et al.: Impact of the LMDZ atmospheric grid configuration on the climate and sensitivity of the IPSL-CM5A coupled model, *Climate Dynamics*, 40, 2167–2192, <https://doi.org/https://doi.org/10.1007/s00382-012-1411-3>, 2013.
- IPCC: Climate change 2014: synthesis report. Contribution of Working Groups I, II and III to the fifth assessment report of the Intergovernmental Panel on Climate Change, <http://hdl.handle.net/10013/epic.45156.d001>, 2014.
- Jones, C., Hughes, J., Bellouin, N., Hardiman, S., Jones, G., Knight, J., Liddicoat, S., O’connor, F., Andres, R. J., Bell, C., et al.: The HadGEM2-ES implementation of CMIP5 centennial simulations, *Geoscientific Model Development*, 4, 543–570, <https://doi.org/https://doi.org/10.5194/gmd-4-543-2011>, 2011.
- Keuler, K., Radtke, K., Kotlarski, S., and Lüthi, D.: Regional climate change over Europe in COSMO-CLM: Influence of emission scenario and driving global model, *Meteorologische Zeitschrift*, 25, 121–136, <https://doi.org/https://doi.org/10.1127/metz/2016/0662>, 2016.
- Kwak, J., St-Hilaire, A., Chebana, F., and Kim, G.: Summer season water temperature modeling under the climate change: case study for Fourchue River, Quebec, Canada, *Water*, 9, 346, <https://doi.org/10.3390/w9050346>, 2017.
- Le Moal, M., Gascuel-Oudou, C., Ménesguen, A., Souchon, Y., Étrillard, C., Levain, A., Moatar, F., Pannard, A., Souchu, P., Lefebvre, A., et al.: Eutrophication: A new wine in an old bottle?, *Science of the total environment*, 651, 1–11, <https://doi.org/10.1016/j.scitotenv.2018.09.139>, 2019.
- Lee, S.-Y., Fullerton, A. H., Sun, N., and Torgersen, C. E.: Projecting spatiotemporally explicit effects of climate change on stream temperature: A model comparison and implications for coldwater fishes, *Journal of Hydrology*, 588, 125–136, <https://doi.org/https://doi.org/10.1016/j.jhydrol.2020.125066>, 2020.
- Loicq, P., Moatar, F., Jullian, Y., Dugdale, S. J., and Hannah, D. M.: Improving representation of riparian vegetation shading in a regional stream temperature model using LiDAR data, *Science of the total environment*, 624, 480–490, <https://doi.org/10.1016/j.scitotenv.2017.12.129>, 2018.
- Michel, A., Brauchli, T., Lehning, M., Schaeffli, B., and Huwald, H.: Stream temperature and discharge evolution in Switzerland over the last 50 years: annual and seasonal behaviour., *Hydrology & Earth System Sciences*, 24, <https://doi.org/10.5194/hess-24-115-2020>, 2020.
- Michel, A., Schaeffli, B., Wever, N., Zekollari, H., Lehning, M., and Huwald, H.: Future water temperature of rivers in Switzerland under climate change investigated with physics-based models, *Hydrology and Earth System Sciences Discussions*, pp. 1–45, <https://doi.org/https://doi.org/10.5194/hess-2021-194>, 2021.
- Minaudo, C., Curie, F., Jullian, Y., Gassama, N., and Moatar, F.: QUAL-NET, a high temporal-resolution eutrophication model for large hydrographic networks, *Biogeosciences*, 15, 2251–2269, <https://doi.org/https://doi.org/10.5194/bg-15-2251-2018>, 2018.
- Moatar, F. and Gailhard, J.: Water temperature behaviour in the River Loire since 1976 and 1881, *Comptes Rendus Geoscience*, 338, 319–328, <https://doi.org/10.1016/j.crte.2006.02.011>, 2006.
- Morales-Marín, L., Rokaya, P., Sanyal, P., Sereda, J., and Lindenschmidt, K.: Changes in streamflow and water temperature affect fish habitat in the Athabasca River basin in the context of climate change, *Ecological Modelling*, 407, 108–118, <https://doi.org/10.1016/j.ecolmodel.2019.108718>, 2019.



- Nelson, K. C. and Palmer, M. A.: Stream temperature surges under urbanization and climate change: data, models, and responses 1, *JAWRA Journal of the American Water Resources Association*, 43, 440–452, <https://doi.org/10.1111/j.1752-1688.2007.00034.x>, 2007.
- Orr, H. G., Simpson, G. L., des Clers, S., Watts, G., Hughes, M., Hannaford, J., Dunbar, M. J., Laizé, C. L., Wilby, R. L., Battarbee, R. W., et al.: Detecting changing river temperatures in England and Wales, *Hydrological Processes*, 29, 752–766, <https://doi.org/10.1002/hyp.10181>, 2015.
- Ouellet, V., St-Hilaire, A., Dugdale, S. J., Hannah, D. M., Krause, S., and Proulx-Ouellet, S.: River temperature research and practice: Recent challenges and emerging opportunities for managing thermal habitat conditions in stream ecosystems, *Science of the Total Environment*, 736, 139 679, <https://doi.org/https://doi.org/10.1016/j.scitotenv.2020.139679>, 2020.
- Picard, C., Floury, M., Seyedhashemi, H., Morel, M., Pella, H., Lamouroux, N., Buisson, L., Moatar, F., and Maire, A.: Direct habitat descriptors improve the understanding of the organization of fish and macroinvertebrate communities across a large catchment, *PloS one*, 17, e0274 167, <https://doi.org/https://doi.org/10.1371/journal.pone.0274167>, 2022.
- Piotrowski, A. P., Osuch, M., and Napiorkowski, J. J.: Influence of the choice of stream temperature model on the projections of water temperature in rivers, *Journal of Hydrology*, 601, 126 629, <https://doi.org/https://doi.org/10.1016/j.jhydrol.2021.126629>, 2021.
- Quintana-Segui, P., Le Moigne, P., Durand, Y., Martin, E., Habets, F., Baillon, M., Canellas, C., Franchisteguy, L., and Morel, S.: Analysis of near-surface atmospheric variables: Validation of the SAFRAN analysis over France, *Journal of applied meteorology and climatology*, 47, 92–107, <https://doi.org/10.1175/2007JAMC1636.1>, 2008.
- Seixas, G. B., Beechie, T. J., Fogel, C., and Kiffney, P. M.: Historical and Future Stream Temperature Change Predicted by a Lidar-Based Assessment of Riparian Condition and Channel Width, *JAWRA Journal of the American Water Resources Association*, 54, 974–991, <https://doi.org/https://doi.org/10.1111/1752-1688.12655>, 2018.
- Seyedhashemi, H., Moatar, F., Vidal, J.-P., Diamond, J. S., Beaufort, A., Chandesris, A., and Valette, L.: Thermal signatures identify the influence of dams and ponds on stream temperature at the regional scale, *Science of The Total Environment*, p. 142667, <https://doi.org/10.1016/j.scitotenv.2020.142667>, 2020.
- Seyedhashemi, H., Moatar, F., Vida, J.-P., and Thiéry, D.: Past and future discharge and stream temperature at high spatial resolution in a large European basin (Loire basin, France), <https://doi.org/10.57745/LBPGFS>, 2022a.
- Seyedhashemi, H., Vidal, J.-P., Diamond, J. S., Thiéry, D., Monteil, C., Hendrickx, F., Maire, A., and Moatar, F.: Regional, multi-decadal analysis reveals that stream temperature increases faster than air temperature, *Hydrology and Earth System Sciences*, 26, 2583–2603, <https://doi.org/https://doi.org/10.5194/hess-26-2583-2022>, 2022b.
- Sinokrot, B., Stefan, H., McCormick, J., and Eaton, J.: Modeling of climate change effects on stream temperatures and fish habitats below dams and near groundwater inputs, *Climatic Change*, 30, 181–200, <https://doi.org/10.1007/BF01091841>, 1995.
- Skamarock, W. C., Klemp, J. B., Dudhia, J., Gill, D. O., Barker, D. M., Wang, W., and Powers, J. G.: A description of the Advanced Research WRF version 3. NCAR Technical note-475+ STR, <http://citeseerx.ist.psu.edu/viewdoc/download?doi=10.1.1.484.3656&rep=rep1&type=pdf>, 2008.
- Soubeyroux, J.-M. et al.: LES NOUVELLES PROJECTIONS CLIMATIQUES DE RÉFÉRENCE DRIAS 2020 POUR LA MÉTROPOLÉ, Tech. rep., METEO FRANCE, <http://www.drias-climat.fr/document/rapport-DRIAS-2020-red3-2.pdf>, 2020.
- Steel, E. A., Beechie, T. J., Torgersen, C. E., and Fullerton, A. H.: Envisioning, quantifying, and managing thermal regimes on river networks, *BioScience*, 67, 506–522, <https://doi.org/10.1093/biosci/bix047>, 2017.
- Thiéry, D.: Logiciel ÉROS version 7.1. Guide d'utilisation, in: Rapport BRGM/RP-67704-FR, <http://infoterre.brgm.fr/rapports/RP-67704-FR.pdf>, 2018.



- Thiéry, D. and Moutzopoulos, C.: Un modèle hydrologique spatialisé pour la simulation de très grands bassins: le modèle EROS formé de grappes de modèles globaux élémentaires, VIIIèmes journées hydrologiques de l'ORSTOM" Régionalisation en hydrologie, application au développement", Le Barbé et E. Servat (Eds.), pp. 285–295, <https://hal-brgm.archives-ouvertes.fr/hal-01061971>, 1995.
- 325 van Vliet, M. T., Franssen, W. H., Yearsley, J. R., Ludwig, F., Haddeland, I., Lettenmaier, D. P., and Kabat, P.: Global river discharge and water temperature under climate change, *Global Environmental Change*, 23, 450–464, <https://doi.org/10.1016/j.gloenvcha.2012.11.002>, 2013.
- Verfaillie, D., Déqué, M., Morin, S., and Lafaysse, M.: The method ADAMONT v1. 0 for statistical adjustment of climate projections applicable to energy balance land surface models, *Geoscientific Model Development*, 10, 4257–4283, <https://doi.org/https://doi.org/10.5194/gmd-10-4257-2017>, 2017.
- 330 Vidal, J.-P., Martin, E., Franchistéguy, L., Baillon, M., and Soubeyroux, J.-M.: A 50-year high-resolution atmospheric reanalysis over France with the Safran system, *International Journal of Climatology*, 30, 1627–1644, <https://doi.org/10.1002/joc.2003>, 2010.
- Voldoire, A., Sanchez-Gomez, E., y Méliá, D. S., Decharme, B., Cassou, C., Sénési, S., Valcke, S., Beau, I., Alias, A., Chevalier, M., et al.: The CNRM-CM5. 1 global climate model: description and basic evaluation, *Climate dynamics*, 40, 2091–2121, <https://doi.org/https://doi.org/10.1007/s00382-011-1259-y>, 2013.
- 335 Wasson, J.-G., Chandesris, A., Pella, H., and Blanc, L.: Typology and reference conditions for surface water bodies in France: the hydroecoregion approach, *TemaNord*, 566, 37–41, <https://hal.archives-ouvertes.fr/hal-00475620/document>, 2002.
- Webb, B. and Walling, D.: Complex summer water temperature behaviour below a UK regulating reservoir, *Regulated Rivers: Research & Management: An International Journal Devoted to River Research and Management*, 13, 463–477, [https://doi.org/10.1002/\(SICI\)1099-1646\(199709/10\)13:5<463::AID-RRR470>3.0.CO;2-1](https://doi.org/10.1002/(SICI)1099-1646(199709/10)13:5<463::AID-RRR470>3.0.CO;2-1), 1997.
- 340 Webb, B. W., Hannah, D. M., Moore, D. R., Brown, L. E., and Nobilis, F.: Recent advances in stream and river temperature research, *Hydrological Processes: An International Journal*, 22, 902–918, <https://doi.org/10.1002/hyp.6994>, 2008.
- Yearsley, J. R.: A semi-Lagrangian water temperature model for advection-dominated river systems, *Water Resources Research*, 45, <https://doi.org/10.1029/2008WR007629>, 2009.
- 345 Zhao, F., Zhan, X., Xu, H., Zhu, G., Zou, W., Zhu, M., Kang, L., Guo, Y., Zhao, X., Wang, Z., et al.: New insights into eutrophication management: Importance of temperature and water residence time, *Journal of Environmental Sciences*, 111, 229–239, <https://doi.org/https://doi.org/10.1016/j.jes.2021.02.033>, 2022.