



HAL
open science

SAMPLING USE CASE O&M: V3 - SURFACE WATER AND GEOLOGY 10/06/2020

Hélène Bressan, Sylvain Grellet

► **To cite this version:**

Hélène Bressan, Sylvain Grellet. SAMPLING USE CASE O&M: V3 - SURFACE WATER AND GEOLOGY 10/06/2020. 115th OGC Technical Committee, Jun 2020, Virtual meeting, France. hal-03925333

HAL Id: hal-03925333

<https://brgm.hal.science/hal-03925333>

Submitted on 5 Jan 2023

HAL is a multi-disciplinary open access archive for the deposit and dissemination of scientific research documents, whether they are published or not. The documents may come from teaching and research institutions in France or abroad, or from public or private research centers.

L'archive ouverte pluridisciplinaire **HAL**, est destinée au dépôt et à la diffusion de documents scientifiques de niveau recherche, publiés ou non, émanant des établissements d'enseignement et de recherche français ou étrangers, des laboratoires publics ou privés.



SAMPLING USE CASE O&M:V3

SURFACE WATER
AND GEOLOGY
10/06/2020



Geoscience for a sustainable Earth

brgm

Surface water sampling Use Case



Sampling act

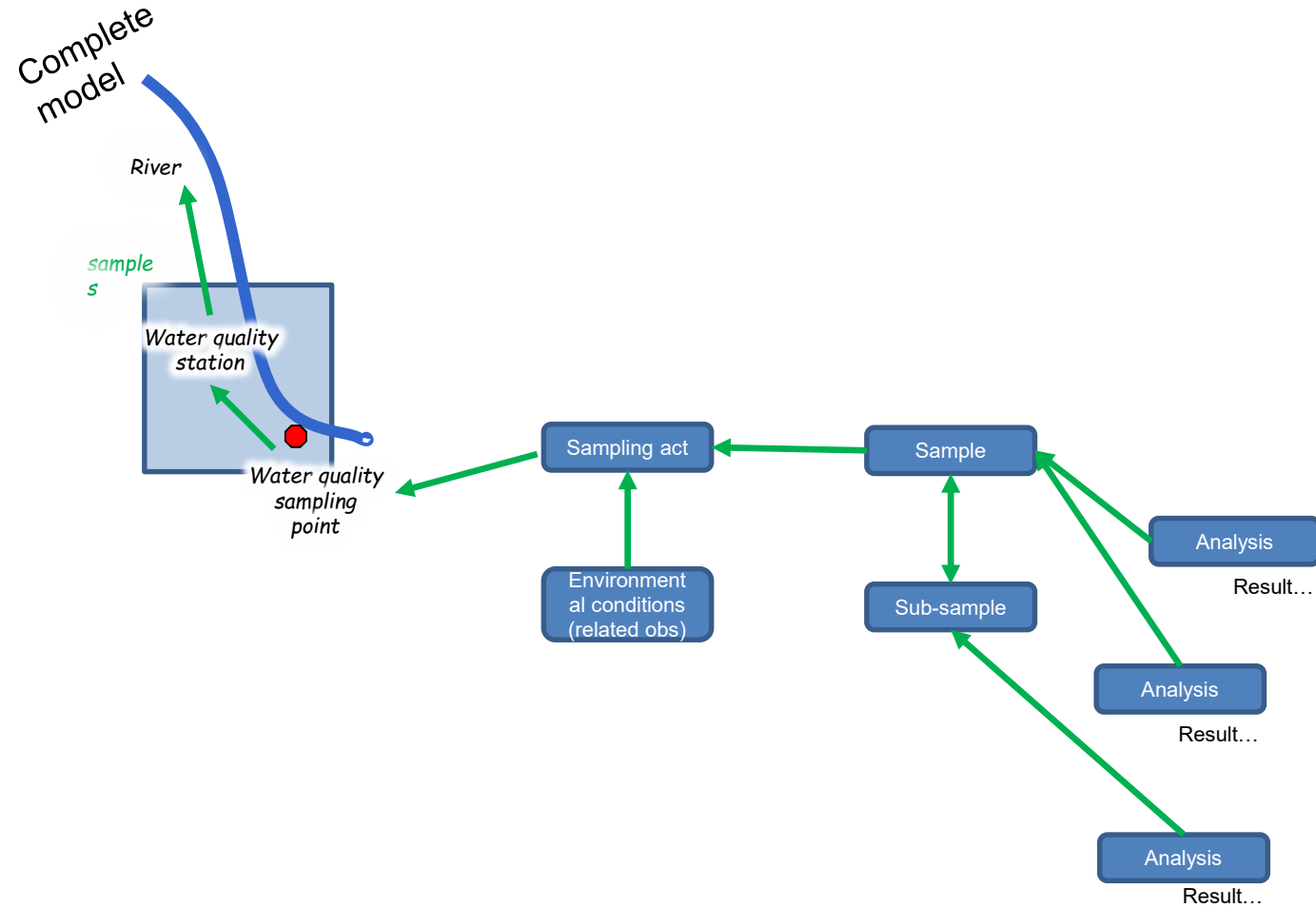
The boat goes in the middle of the river (water quality station)

Environmental conditions (related obs)



- Sample
- Sample
- Sample

Surface water sampling Use Case

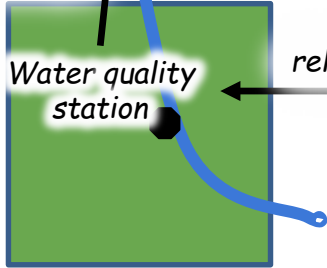


120 million analysis results ..

Surface water sampling Use Case

Simplified model
(implemented in
SensorThings API)

sampledFeature



relatedSamplingFeature

Water Sample

fOi

relatedObservation

Analysis

Result...

relatedObservation

fOi

relatedObservation

Analysis

Result...

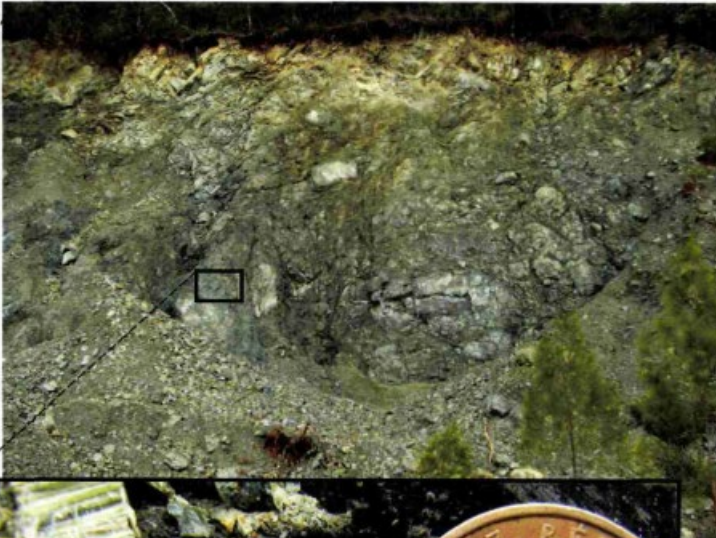
relatedObservation

Environmental conditions
(related obs)

120 million analysis results

Observation
Observation result
Water Sample (SF_Specimen)
River (ultimate fOI)
Other fOIs on the side (ex : river pertains to river basin)
Environmental Monitoring Facility (EF)
EF associated information

Geology Use Case : Outcrop observation and natural asbestos sampling



Outcrop



SamplingPoint



Piece of rock

Sampling & sub-sampling

Laboratory

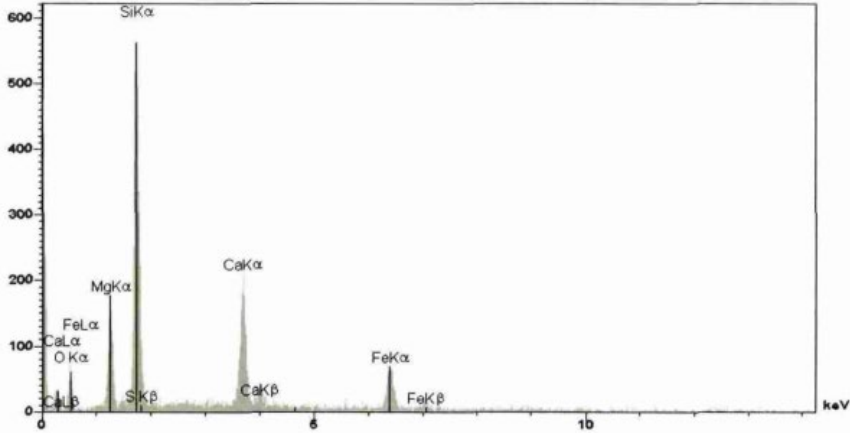
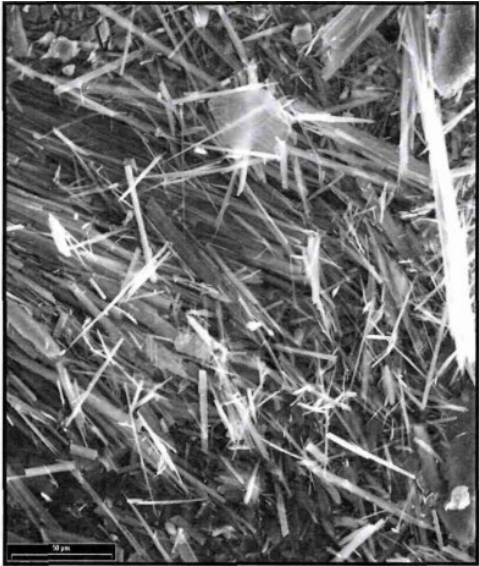
On site radiometry

Geology Use Case : Outcrop observation and natural asbestos sampling



Mineral description

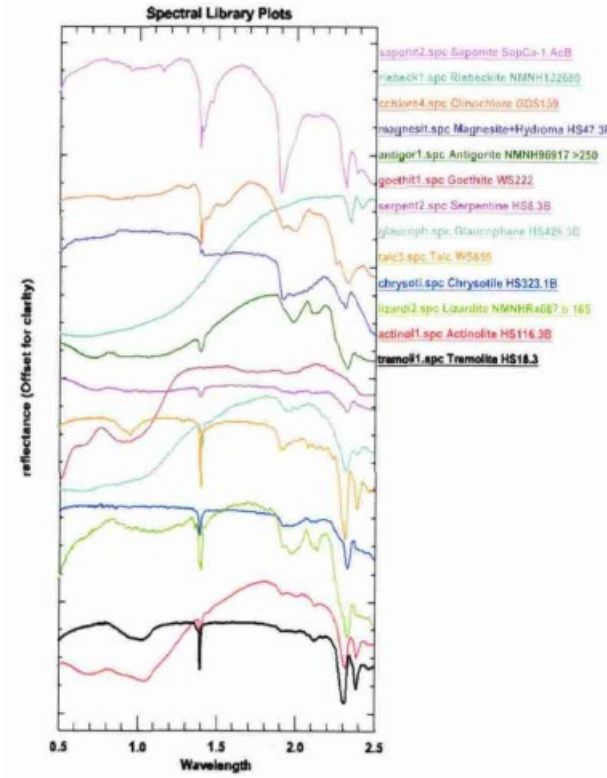
What happens
in the Lab ?



Chemical composition

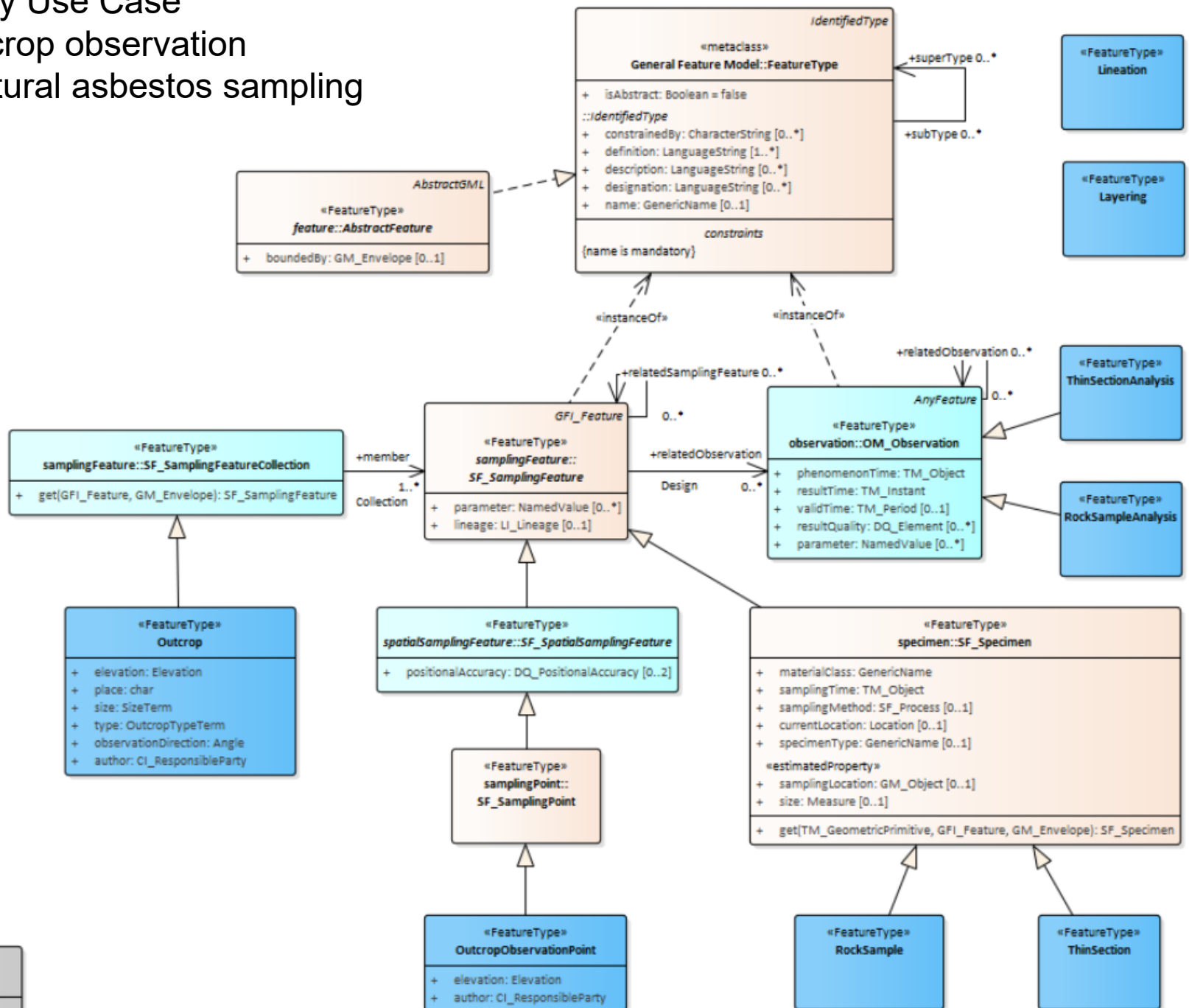
Geology Use Case : Outcrop observation and natural asbestos sampling

On site radiometry



Geology Use Case

- Outcrop observation and natural asbestos sampling



THANK YOU



s.grellet@brgm.fr

h.bressan@brgm.fr

