



Heat flow measurements in the Northern Mozambique Channel

Frédérique Rolandone, Jeffrey Poort, Charles Masquelet, Sylvie Leroy, Isabelle Thinon, Anne Lemoine, Fabien Paquet

► To cite this version:

Frédérique Rolandone, Jeffrey Poort, Charles Masquelet, Sylvie Leroy, Isabelle Thinon, et al.. Heat flow measurements in the Northern Mozambique Channel. Comptes Rendus. Géoscience, In press, 10.5802/crgeos.130 . hal-03857402

HAL Id: hal-03857402

<https://brgm.hal.science/hal-03857402>

Submitted on 16 Jan 2023

HAL is a multi-disciplinary open access archive for the deposit and dissemination of scientific research documents, whether they are published or not. The documents may come from teaching and research institutions in France or abroad, or from public or private research centers.

L'archive ouverte pluridisciplinaire **HAL**, est destinée au dépôt et à la diffusion de documents scientifiques de niveau recherche, publiés ou non, émanant des établissements d'enseignement et de recherche français ou étrangers, des laboratoires publics ou privés.



Distributed under a Creative Commons Attribution 4.0 International License



INSTITUT DE FRANCE
Académie des sciences

Comptes Rendus

Géoscience

Sciences de la Planète

Frédérique Rolandone, Jeffrey Poort, Charles Masquelet, Sylvie Leroy, Isabelle Thinon, Anne Lemoine and Fabien Paquet

Heat flow measurements in the Northern Mozambique Channel

Published online: 19 December 2022

<https://doi.org/10.5802/crgeos.130>

Part of Special Issue: The Mayotte seismo-volcanic crisis of 2018-2021 in the Comoros archipelago (Mozambique channel)

Guest editors: Jérôme Van der Woerd (Institut Terre Environnement de Strasbourg, UMR 7063 CNRS / Université de Strasbourg, 67084 Strasbourg, France), Vincent Famin (Laboratoire Géosciences Réunion, Université de La Réunion - IPGP, 97744 Saint-Denis, France) and Eric Humler (Professeur Université de Nantes, Laboratoire de Planétologie et Géosciences, UMR 6112, Faculté des Sciences et Techniques, Nantes Université, 44322 Nante, France)



This article is licensed under the
CREATIVE COMMONS ATTRIBUTION 4.0 INTERNATIONAL LICENSE.
<http://creativecommons.org/licenses/by/4.0/>



*Les Comptes Rendus. Géoscience — Sciences de la Planète sont membres du
Centre Mersenne pour l'édition scientifique ouverte*

www.centre-mersenne.org

e-ISSN : 1778-7025



The Mayotte seismo-volcanic crisis of 2018-2021 in the Comoros archipelago (Mozambique channel) / *La crise sismo-volcanique de 2018-2021 de Mayotte dans l'archipel des Comores (Canal du Mozambique)*

Heat flow measurements in the Northern Mozambique Channel

Mesures de flux de chaleur dans le nord du canal du Mozambique

Frédérique Rolandone^{*, a}, Jeffrey Poort^a, Charles Masquelet^a, Sylvie Leroy^a,
Isabelle Thinon^b, Anne Lemoine^b and Fabien Paquet^b

^a Sorbonne Université, CNRS, Institut des Sciences de la Terre de Paris (ISTeP), Paris, France

^b Bureau de Recherches Géologiques et Minières (BRGM), Orléans, France

E-mails: frederique.rolandone@sorbonne-universite.fr (F. Rolandone),

jeffrey.poort@sorbonne-universite.fr (J. Poort),

charles.masquelet@sorbonne-universite.fr (C. Masquelet),

sylvie.leroy@sorbonne-universite.fr (S. Leroy), i.thinon@brgm.fr (I. Thinon),

A.Lemoine@brgm.fr (A. Lemoine), f.paquet@brgm.fr (F. Paquet)

Abstract. Heat flow in the Northern Mozambique Channel is poorly constrained, with only a few old measurements indicating relatively low values of 55–62 mW/m². During the SISMAORE cruise to the Northern Mozambique Channel, we obtained new heat flow measurements at four sites, using sediment corers equipped with thermal probes. Three of the sites yield values of 42–47 mW/m², confirming low regional heat flow in this area. Our values are consistent with a Jurassic oceanic lithosphere around Mayotte, although the presence of very thin continental crust or continental fragments could also explain the observed heat flow. Our values do not support a regional thermal anomaly and so do not favor a hotspot model for Mayotte. However, at a fourth site located 30 km east of the submarine volcano that appeared in 2018 east of Mayotte, we measured a very high heat flow value of 235 mW/m², which we relate to the circulation of hot fluids linked to recent magmatic activity.

Résumé. Le flux de chaleur dans le nord du canal du Mozambique, basé sur des mesures anciennes et peu nombreuses, est faible (55–62 mW/m²). Durant la campagne à la mer SISMAORE, nous avons obtenu quatre nouvelles mesures de flux de chaleur. Nos mesures donnent des valeurs de 47, 45 et 42 mW/m² qui confirment un flux de chaleur régional faible. Ces valeurs sont cohérentes avec une lithosphère océanique d'âge Jurassique autour de Mayotte, mais elles peuvent aussi être expliquées par une croûte continentale amincie, ou des enclaves de croûte continentale dans une croûte océanique. Nos faibles valeurs de flux ne sont pas en faveur d'une anomalie thermique régionale ni du modèle point chaud pour expliquer le volcanisme de Mayotte. Cependant, nous avons une mesure de flux,

* Corresponding author.

pour un site à 30 km du volcan sous-marin actif à l'est de Mayotte, qui donne une valeur très élevée de 235 mW/m^2 , pouvant être reliée à la circulation de fluides chauds.

Keywords. Heat flow, Oceanic lithosphere, Volcanism, Northern Mozambique Channel, Comoros archipelago, 2018–2021 Mayotte eruption.

Mots-clés. Flux de chaleur, Lithosphère océanique, Volcanisme, Canal du Mozambique, Archipel des Comores, 2018–2021 crise volcanique de Mayotte.

Published online: 19 December 2022

1. Introduction

The Northern Mozambique Channel lies between the east coast of Africa and the northern tip of Madagascar, where the Comoros Islands form an archipelago of four volcanic edifices (Figure 1). The volcanic islands are located between the Comoros Basin to the south and the Somali Basin to the north (Figure 1) and their activity started during the Miocene after the Mesozoic opening of the Mozambique Channel. The Somali Basin is considered to be underlain by oceanic crust, based on sonobuoy experiments and reflection seismic data [Coffin et al., 1986, Sauter et al., 2018]. An oceanic nature is also known from magnetic anomalies trending WSW–ENE, which indicate the oldest oceanic crust to be of Jurassic age, about 150 Ma [Rabinowitz et al., 1983, Davis et al., 2016, Phethean et al., 2016]. The age and nature of the crust beneath the Comoros Basin and the archipelago is a matter of ongoing debate. The area has been proposed to contain an abnormal oceanic crust [Talwani, 1962], a thinned continental crust [Roach et al., 2017], or a normal oceanic crust [Klimke et al., 2016]. Based on one receiver function computation, it has been proposed that the Comoros Archipelago may be built on an isolated block of continental crust [Dofal et al., 2021]. The origin of volcanism within the Comoros Archipelago is also the subject of debate, with proposals linking the islands to a mantle plume [the “hotspot” model, e.g., Class et al., 1998], or to a diffuse or incipient tectonic plate boundary [Michon, 2016, Famin et al., 2020, Feuillet et al., 2021].

The remarkable reports of submarine volcanic activity since May 2018 east of Mayotte, at the eastern end of the Comoros Archipelago [Figure 1, Lemoine et al., 2020, Feuillet et al., 2021, Cesca et al., 2020], have stimulated a number of sea and land surveys of the area [e.g., Rinnert et al., 2019, REVOSIMA, 2021]. To better understand the geodynamics of the Northern Mozambique Channel, geophysical and geological data were acquired during the 2020–2021

SISMAORE cruise [Thinon et al., 2020, 2022]. In this article, we focus on heat flow measurements acquired during the SISMAORE cruise at four stations (Figure 1), using a sediment corer equipped with autonomous thermal sensors. We present these measurements and then compare them with the few existing measurements of surface heat flow in the Northern Mozambique Channel [von Herzen and Langseth, 1965], in order to assess models for the nature of the crust and the origin of volcanic activity in this area.

2. Heat flow measurements

2.1. Methods

Heat flow density represents the Earth's heat loss per surface unit and can be obtained from the Fourier law as the product of the vertical temperature gradient and the thermal conductivity of rocks where the gradient is measured. We estimate heat flow using autonomous thermal probes attached to sediment corers with lengths of either 23 m or 12 m. We use four high-precision probes (THP from NKE®) that measure temperature with a precision of $0.005 \text{ }^{\circ}\text{C}$. The four probes are placed along the lower 12 m or 6 m of the 23 m or 12 m core barrels, respectively. The probes measure the water temperature up to the seafloor and then the equilibrium temperature of the sediments after penetration. Because penetration of the probes in the sediment is associated with frictional heating, the temperature is recorded continuously for about ten minutes, which in general is not enough to reach equilibrium but allows its extrapolation. A separate device (S2IP from NKE®) provides pressure and tilt values. Unlike conventional heat flow instruments, thermal conductivity was not measured *in situ*, but aboard the ship on recovered sediment cores using a needle probe instrument (Hukseflux TPSYS02). The measurement method is based on the transient line source method: from the response to a heating step the thermal conductivity

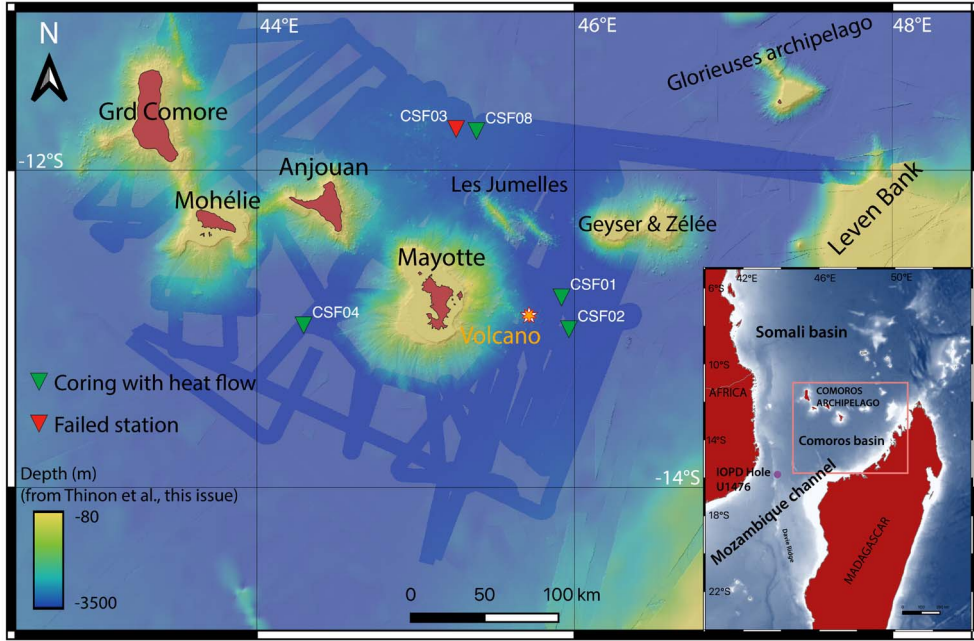


Figure 1. Location of heat flow measurements (green triangles) acquired during SISMAORE relative to bathymetric data compilation [Thinon et al., 2022]. A submarine volcano formed during the 2018–2021 eruption (called New Volcano Edifice) is shown with an orange star [Feuillet et al., 2021]. The inset shows the Somali and Comoros basins as well as the location of IODP site U1476.

Table 1. Heat flow measurements obtained during the SISMAORE cruise

Site name	Latitude	Longitude	Water depth (m)	Sediment core length (m)	nT	Thermal gradient (mK/m)	$n\lambda$	Thermal conductivity (W/m/K)	Heat flow (mW/m ²)
CSF01	-12.7958	45.9173	3540	18.2	4	46.6	35	1.01	47
CSF02	-12.9965	45.9638	3525	4.0	2	240.0	12	0.98	235
CSF04	-12.9708	44.2927	3546	2.6	4	50.9	9	0.89	45
CSF08	-11.7472	45.3819	3417	11.0	4	49.3	34	0.85	42

nT , number of temperature determinations; $n\lambda$, number of thermal conductivity determinations.

of sediments can be calculated [Von Herzen and Maxwell, 1959, Blum, 1997]. We measured the conductivity at intervals of about 30 cm all along the sediment cores (Table 1).

Analysis of the cores shows that recent sediments include siliciclastic, volcanoclastic, and carbonate components. Sedimentation may affect heat flow by decreasing the temperature gradient as a function of the sedimentation rate [e.g., Manga et al., 2012]. Sedimentation rates are estimated at low values of 2–4 cm/1000 yr (Zaragosi, personal communication), comparable to values of 3 cm/1000 yr at IODP site U1476 [see inset Figure 1; Hall et al., 2017] and of 2–

5 cm/1000 yr based on the thickness and estimated ages of sediment layers observed on seismic profiles from SISMAORE cruise [Thinon et al., 2022, Masquelet et al., 2022]. Such low rates of sedimentation imply a negligible heat flow correction [Von Herzen and Uyeda, 1963, Manga et al., 2012].

2.2. Results at four sites

We measured temperature and thermal conductivity at four sites, using a 23 m corer at sites CSF01 and CSF02 and a 12 m corer at sites CSF04 and CSF08

(Figures 1 and 2, Table 1). The thermal gradient is defined by three or four temperatures at all sites except CSF02, where only two temperatures were measured. We determined the thermal gradient value from a linear regression of the *in-situ* sediment temperature data. Thermal gradients are in the range of 46–51 mK/m, while mean thermal conductivity is in the range 0.85–1.01 W/m/K.

The first two measurements were performed using a 23 m long corer.

CSF01 is located east of Mayotte Island, in the abyssal plain. Good penetration resulted in a sediment core 18.2 m long. A linear thermal gradient is defined by three temperatures, whereas a fourth, higher value at a depth of 16.9 m lies above the linear trend (Figure 2). This value occurs too deep below seafloor to invoke the effect of bottom water temperature variations on sediment equilibrium temperatures [Davis *et al.*, 2003]. We note a change in thermal conductivity at this depth, with values higher than 1.8 W/m/K (Figure 2). The high conductivity values could be related to siliciclastic sediments prone to fluid circulation and potential temperature perturbations [Vasseur *et al.*, 1993, Poort and Polansky, 2002]. We exclude the high temperature value at 16.9 m to calculate a linear thermal gradient of 46.6 mK/m. Thermal conductivity within the core varies from 0.71 to 1.89 W/m/K, which is high but cannot account for the thermal non-linearity observed at 16.9 m (Figure 2, Table 1). The mean thermal conductivity is 1.01 W/m/K, higher than in the other cores, which is probably related to the low porosity of the sediments. The core contains a record of hemipelagic sedimentation with turbidites. The estimated heat flow for CSF01 is 47 mW/m².

CSF02 is also located east of Mayotte, on the border of a topographic dome 10 km in diameter and 30 m in height (Figure 3). In volcanic areas, such morphology corresponds to a forced fold, often related to the intrusion of a saucer-shaped sill at depth and described in various geological contexts [Jackson *et al.*, 2013, Medialdea *et al.*, 2017, Magee *et al.*, 2017], as well as experimentally reproduced [Galland, 2012]. On a seismic profile across the site, we observe that doming affects the underlying sedimentary succession (0.5 s twtt) down to an older volcanic layer that affects the seismic image and precludes sill localization (Figure 3). The morphological expression at the seabed suggests that the sill intrusion occurred in

recent geological time, though it is not possible to be precise before the validation of a proper local age model. The forced fold lies at the eastern end of a WNW-ESE active volcanic ridge, the Eastern Volcanic Chain of Mayotte, 30 km east of the new Volcano Edifice [orange star in Figure 1; Paquet *et al.*, 2019, Thion *et al.*, 2022, Deplus *et al.*, 2019, Feuillet *et al.*, 2021]. The penetration of the corer at site CSF02 was low as it stopped on a sandy quartzitic layer (6 m for a 23 m barrel). Due to this low penetration, temperatures were measured at only two sensors. The thermal gradient is therefore poorly constrained, but is very high at 240 mK/m. The mean thermal conductivity is 0.98 W/m/K, yielding a high heat flow of 235 mW/m² (Figure 2, Table 1), maybe linked to the presence of the underwater volcano (Figure 1) but a new measurement is needed to confirm this hypothesis.

Following loss of the 23 m corer and temperature probes at the site CSF03 (Figure 1), the following heat flow measurements were obtained using a 12 m corer. CSF04 is located west of Mayotte in the Comoros Basin. Complete penetration of the corer resulted in temperature measurements in all four sensors. Nonetheless, due to technical problems, the sediment core recovered was very short (2.6 m). The thermal gradient is 50.9 mK/m, and the mean thermal conductivity of the shallow sediments is 0.89 W/m/K. Despite the fact that we only determined the conductivity in the upper part of the core, this value falls in the range of the mean conductivities measured at the other sites (Figure 2, Table 1). The heat flow estimate for CSF04 is 45 mW/m².

CSF08 is located North of Mayotte in the Somali Basin. Good penetration resulted in a core length of 11 m. The sediment core contains a record of hemipelagic sedimentation with turbidites. The thermal gradient is 49.3 mK/m and the mean thermal conductivity is 0.85 W/m/K (Figure 2, Table 1). The heat flow for CSF08 is estimated to be 42 mW/m².

3. Discussion

The heat flow measurements from the SISMAORE cruise add to the regional understanding of the Northern Mozambique Channel, where only six measurements have previously been acquired (Figure 4). Five of these heat flow values come from the NGHf database [Lucazeau, 2019] and date from the

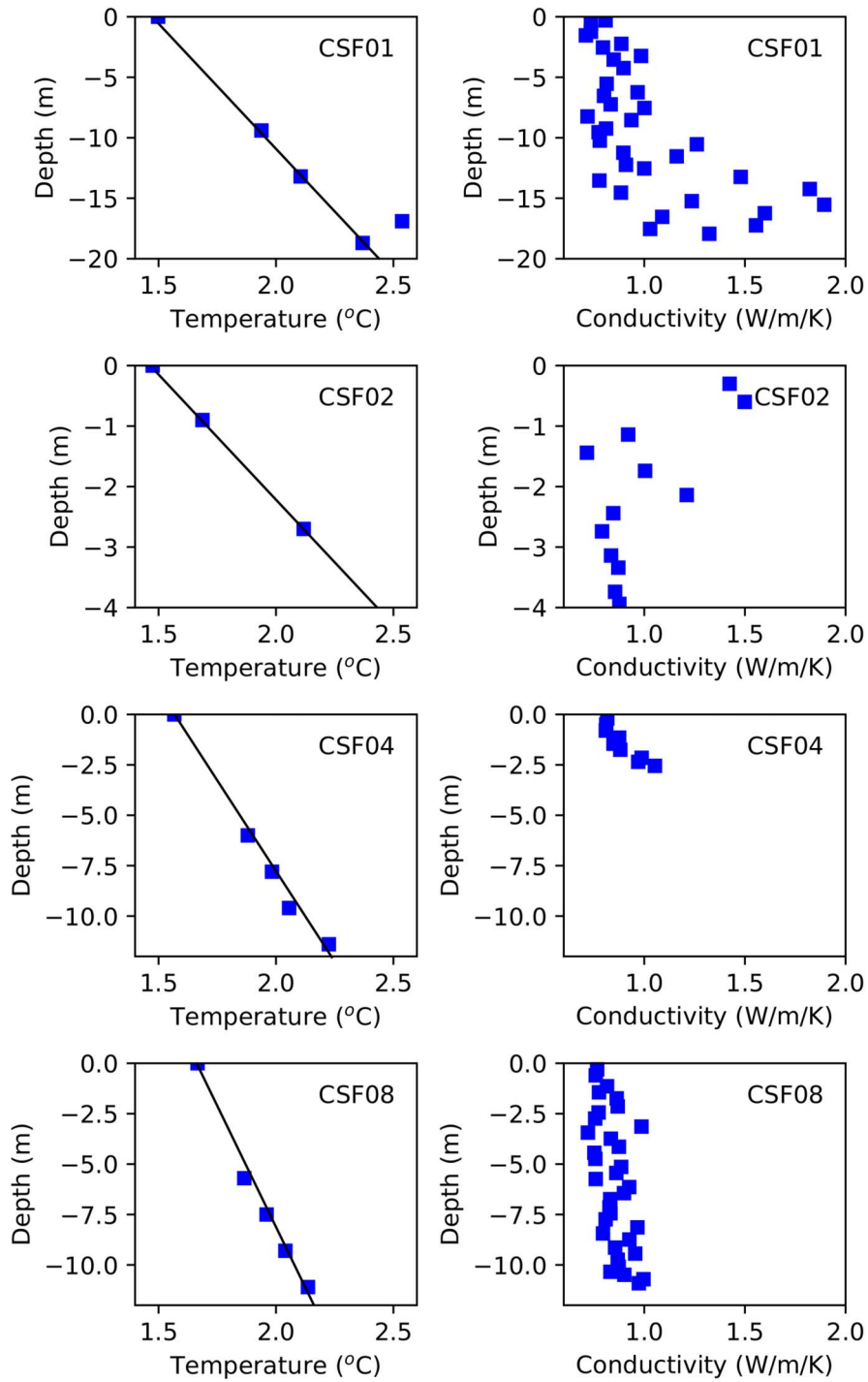


Figure 2. Temperature–depth and thermal conductivity–depth profiles obtained at each of the four core locations. The black lines indicate the mean thermal gradient derived from a linear regression of all or selected temperature data and extrapolated to the surface. The bottom water temperature measured before the penetration is also shown.

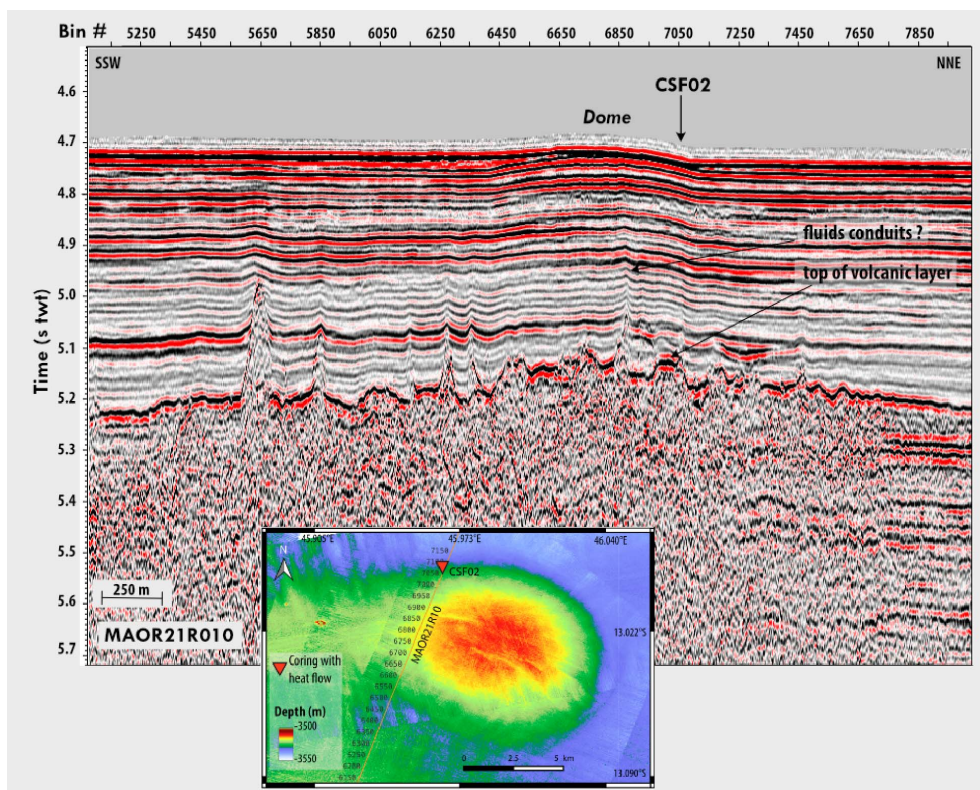


Figure 3. Seismic reflection profile crossing the location of core CSF02, at the edge of a topographic dome (location shown on inset bathymetric map). The dome is underlain at depth by a basaltic layer and possible fluid conduits are imaged in the overlying sediment succession that may record the vertical migration of fluids.

1960–70s (Table 2). One is a value of 29 mW/m^2 obtained in the Davie Ridge during DSDP leg 25 [Marshall and Erickson, 1974]. Two measurements in the Somali Basin provide heat flow values of 61 and 62 mW/m^2 [von Herzen and Langseth, 1965], while two measurements in the Comoros Basin have values of 57 and 55 mW/m^2 [von Herzen and Langseth, 1965]. In addition, during the recent PAMELA-MOZ1 cruise [Olu, 2014, Jorry et al., 2020], a heat flow measurement of 37 mW/m^2 was obtained close to the Glorieuses Islands (Table 2, Figure 4). Our new measurements include heat flow values of 47, 45 and 42 mW/m^2 for sites CSF01, CSF04 et CSF08 (Table 1, Figure 4). Taken together, available data from the Northern Mozambique Channel concur that regional heat flow is low.

It is of interest to compare our heat flow value of 45 mW/m^2 at site CSF04 in the Comoros Basin with a nearby older measurement at site V19-100

(Figure 4), which yielded a heat flow of 57 mW/m^2 [von Herzen and Langseth, 1965]. Thermal conductivity values at the two sites are similar (0.88 W/m/K versus 0.89 W/m/K , Tables 1 and 2), whereas the thermal gradient is higher for the older measurement (65.2 mK/m versus 50.9 mK/m , Tables 1 and 2). All the older measurements (Figure 4, sites V19 in Table 2) were acquired using a shorter (2 m) corer and only two thermal probes, whereas we used four probes at depths below seafloor greater than 6 m (Figure 2). Therefore, the older gradient measurements have much higher uncertainties because of possible perturbations by deep-ocean temperature variations [Davis et al., 2003] and because of technical bias before 1990 [Lucazeau, 2019]. The higher heat flow at the older sites is much less reliable than the values obtained with more recent and longer instruments.

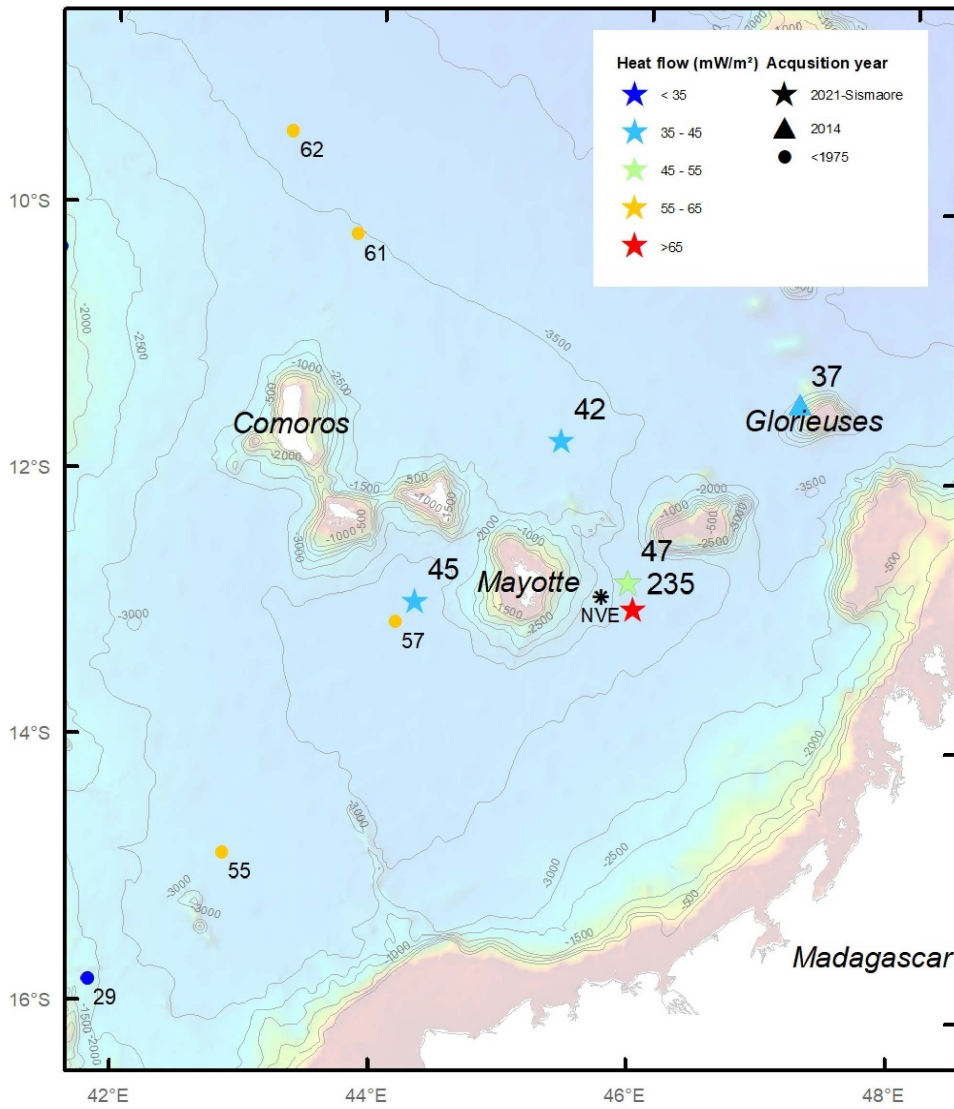


Figure 4. Bathymetric map of the Northern Mozambique Channel with previous heat flow measurements (colored dots) from the NGHF database [Lucazeau, 2019] and from the PAMELA-MOZ1 survey (colored triangle) [Olu, 2014], along with our new measurements (colored stars) from SISMAORE. The submarine volcano NVE (New Volcano Edifice) formed during the 2018–2021 eruption is shown with a black star.

Table 2. Heat flow measurements from previous cruises

Site name	Latitude	Longitude	Thermal gradient (mK/m)	Thermal conductivity (W/m/K)	Heat flow (mW/m ²)	References
V19-98	−9.4666	43.3167	68.8	0.90	62	Herzen and Langseth [1965]
V19-99	−10.2317	43.8166	67.0	0.91	61	Herzen and Langseth [1965]
V19-100	−13.1333	44.1499	65.2	0.88	57	Herzen and Langseth [1965]
V19-101	−14.8833	42.8500	57.8	0.96	55	Herzen and Langseth [1965]
KSF06	−11.4400	47.1850	38.8	0.96	37	Olu [2014]

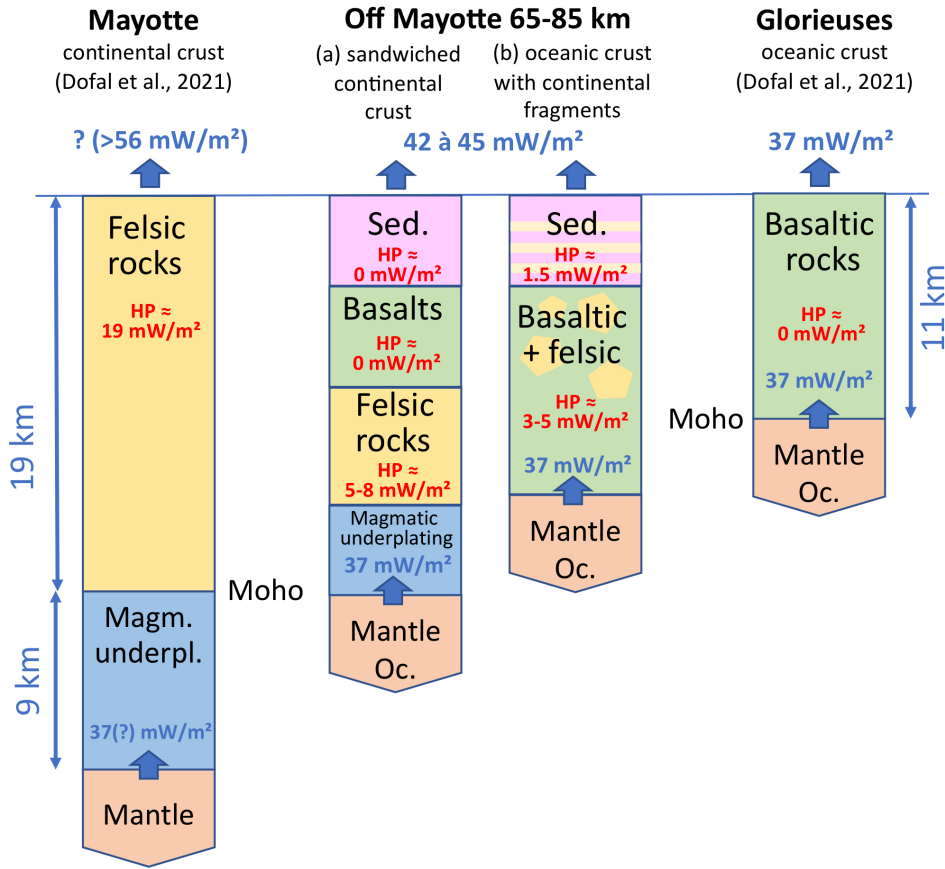


Figure 5. Conceptual sketch showing two hypotheses (two central columns) for the structure of the crust off Mayotte, both consistent with heat flow data, compared to heat flow measured or expected for Mayotte and Glorieuses Islands and based on information on crustal structure from Dofal et al. [2021]. See text for discussion.

We obtained heat flow values of 42 mW/m^2 in the Somali Basin, of 45 mW/m^2 in the Comoros Basin, and of 47 mW/m^2 east of Mayotte within the Comoros archipelago. Our values are consistent with an oceanic lithosphere of Jurassic age, for which the mean global heat flow is $51 \pm 11 \text{ mW/m}^2$ [Lucazeau, 2019]. The value of 37 mW/m^2 measured recently near the Glorieuses Islands, where receiver functions indicate an oceanic crust with a shallow Moho at 11 km depth [Dofal et al., 2021], is lower than this global mean, while our new value of 42 mW/m^2 in the Somali basin is at the lower end of the global mean. In the Comoros Basin, a comparable value of 45 mW/m^2 could also point to an oceanic crust of Jurassic age in this area. However, from a thermal point of view, it is difficult to differentiate old oceanic

crust from thinned continental crust for which heat production contribution is weak [e.g., Loudon et al., 1997].

From a receiver function study [Dofal et al., 2021], it was proposed that the crust under Mayotte is of continental nature, with a thickness of 19 km, and is underlain by magmatic underplating, with a 27-km deep Moho. This implies a surface heat flow of not less than 56 mW/m^2 if we apply a mean value of crustal heat production of $1 \mu\text{W/m}^3$ [Hasterok and Webb, 2017]: 19 mW/m^2 due to radiogenic heat production in the crust and 37 mW/m^2 from mantle input as observed at the Glorieuses Islands (Figure 5). Our data indicate lower heat flow values of $42\text{--}47 \text{ mW/m}^2$ at a 65–85 km distance of Mayotte, implying that the proposed continental block under

Mayotte Island is of limited lateral extent. New investigations by Dofal *et al.* [2022] do not provide conclusive data on the nature of the crust, that could be either an abnormally thick oceanic crust or a thinned continental crust abandoned during the southern drift of Madagascar.

We propose two hypotheses for the crust off Mayotte that are in agreement with the heat flow observations (Figure 5): (a) a very thin continental crust of felsic material overlain by effusive basalts, and perhaps underplated by basalts as for Mayotte, or (b) a basaltic oceanic crust, with additional heat production from incrustated continental fragments and/or from quartz-rich sediment eroded from the nearby island [Flower and Strong, 1969]. Heat flow data alone cannot discriminate between these models, and the nature of the crust off Mayotte needs to be further defined by seismic methods.

At a regional scale, the low heat flow does not represent a thermal signature that can be readily associated with a mantle plume. A “hotspot” model has been proposed for the Comoros Archipelago [e.g., Class *et al.*, 1998], but has been questioned by several authors [see discussions in Michon, 2016, Thirion *et al.*, 2022]. On the one hand, heat flow anomalies on hot spot swells are small and sometimes difficult to constrain [Bonneville *et al.*, 1997]. On the other hand, our measured heat flow lie in the lower range of those for Jurassic oceanic lithosphere [Hasterok, 2013, Lucazeau, 2019], and thus do not support a regional thermal anomaly.

Since May 2018, submarine volcanic activity has been taking place 50 km east of Mayotte, with evidence of a large eruption [Lemoine *et al.*, 2020, Cesca *et al.*, 2020, Feuillet *et al.*, 2021, Berthod *et al.*, 2021a,b, Deplus *et al.*, 2019]. These studies all indicate a deep reservoir of magma (>55 km depth), which is migrating to the surface through dykes that intrude the lithosphere. Due to slow thermal diffusivity, such a deep reservoir has no present-day thermal signature at the Earth’s surface. As exemplified in the Gulf of Aden, to produce a high heat flow at the surface the emplacement of the heat source must be both shallow and recent [Lucazeau *et al.*, 2009]. As presented above, we have one very high heat flow measurement of 235 mW/m², at site CSF02, 30 km east of the active volcano (NVE, Figure 4). This value is not representative of regional heat flow but is clearly the result of a local process. Several

factors suggest that it can be linked with the circulation of hot fluids. The measurement is aligned with the eastern Volcanic Chain of Mayotte and located at the border of a recent forced fold, 10 km wide and 30 m high, underlain by a magmatic sill (Figure 3). Seismic reflection data from SISMAORE cruise show conduit-like features or chimneys within the sedimentary succession that may record the vertical migration of fluids towards the surface in the area [Masquelet *et al.*, 2022]. Upward migration of hot fluids could be triggered by the renewed activity at the east Volcanic Chain of Mayotte, or by the recent sill intrusion that formed the forced fold.

4. Conclusions

Heat flow measurements acquired in the Northern Mozambique Channel during the SISMAORE cruise are low, with values in the range of 42–47 mW/m². Together with other recent data in the area, these values are among the lowest heat flow reported for oceanic lithosphere of Jurassic age. Regarding the nature of the crust, two hypotheses are proposed that fit with the new heat flow data. The first is that off Mayotte the crust is mainly oceanic, with some heat production from felsic continental fragments in the crust or in sedimentary deposits. The second is that the crust is composed of a thin continental layer overlain by effusive basalts and possibly underplated as proposed for Mayotte. The low regional heat flow observed in the Northern Mozambique Channel appears inconsistent with a mantle plume. One very high heat flow value of 235 mW/m² at a site 30 km east of the active volcano is believed to be related to the circulation of hot fluids induced by the recent magmatic activity, maybe by the latest pulse that started in 2018 east of Mayotte.

Conflicts of interest

Authors have no conflicts of interest to declare.

Acknowledgments

We thank Captain P. Moimeaux, the crew and technicians from R/V Pourquoi Pas ? (FOF by Ifremer/GENAVIR), and the scientific COYOTES and SISMAORE teams. The SISMAORE cruise (<https://doi.org/10.17600/18001331>) is mainly funded by

the FOF (Flotte Océanographique Française), the French Geological Survey (BRGM) and the COYOTES project (Agence Nationale de Recherche; ANR-19-CE31-0018). The Pamela-MOZ1 heat-flow measurement comes from the PAMELA project (Passive Margin Exploration Laboratories) which is a scientific project led by Ifremer and TotalEnergies in collaboration with Université de Bretagne Occidentale, Université Rennes, Sorbonne Université, CNRS and IFPEN. Finally, we thank the two reviewers, Alain Bonneville and Daniel Praeg, for their valuable comments and suggestions.

References

- Berthod, C., Médard, E., Bachèlery, P., Gurioli, L., Di Muro, A., Peltier, A., Komorowski, J.-C., Benbakkar, M., Devidal, J.-L., Langlade, J., Besson, P., Boudon, G., Rose-Koga, E., Deplus, C., Le Friant, A., Bickert, M., Nowak, S., Thinon, I., Burckel, P., Hidalgo, S., Kaliwoda, M., Jorry, S., Fouquet, Y., and Feuillet, N. (2021a). The 2018-ongoing Mayotte submarine eruption: Magma migration imaged by petrological monitoring. *Earth Planet. Sci. Lett.*, 571, article no. 117085.
- Berthod, C., Médard, E., Di Muro, A., Hassen Ali, T., Gurioli, L., Chauvel, C., Komorowski, J.-C., Benbakkar, M., Devidal, J.-L., Besson, P., Le Friant, A., Deplus, C., Nowak, S., Thinon, I., Burckel, P., Hidalgo, S., Feuillet, N., Jorry, S., and Fouquet, Y. (2021b). Mantle xenolith-bearing phonolites and basanites feed the active volcanic ridge of Mayotte (Comoros archipelago, SW Indian Ocean). *Contrib. Mineral. Petrol.*, 176(10), 1–24.
- Blum, P. (1997). Physical properties handbook: a guide to the shipboard measurement of physical properties of deep-sea cores. Technical Report 26, Ocean Drilling Project. <http://www-odp.tamu.edu/publications/tnotes>.
- Bonneville, A., Von Herzen, R. P., and Lucazeau, F. (1997). Heat flow over Reunion hot spot track: Additional evidence for thermal rejuvenation of oceanic lithosphere. *J. Geophys. Res. Solid Earth*, 102(B10), 22731–22747.
- Cesca, S., Letort, J., Razafindrakoto, H. N., Heimann, S., Rivalta, E., Isken, M. P., and Dahm, T. (2020). Drainage of a deep magma reservoir near Mayotte inferred from seismicity and deformation. *Nat. Geosci.*, 13(1), 87–93.
- Class, C., Goldstein, S. L., Altherr, R., and Bachèlery, P. (1998). The process of plume–lithosphere interactions in the ocean basins—the case of Grande Comore. *J. Petrol.*, 39(5), 881–903.
- Coffin, M. F., Rabinowitz, P. D., and Houtz, R. E. (1986). Crustal structure in the western Somali Basin. *Geophys. J. Int.*, 86(2), 331–369.
- Davis, E. E., Wang, K., Becker, K., Thomson, R. E., and Yashayaev, I. (2003). Deep-ocean temperature variations and implications for errors in seafloor heat flow determinations. *J. Geophys. Res.*, 108(B1), article no. 2034.
- Davis, J. K., Lawver, L. A., Norton, I. O., and Gahagan, L. M. (2016). Neo Somalie Basin magnetic anomalies and a plate model for the early Indian Ocean. *Gondwana Res.*, 34, 16–28.
- Deplus, C., Feuillet, N., Bachelery, P., Fouquet, Y., Jorry, S., Thinon, I., et al. (2019). Early development and growth of a deep seafloor volcano: Preliminary results from the MAYOBS Cruises. In *AGU Fall Meeting Abstracts*, volume 2019. AGU, Washington, D.C. V43I-0227.
- Dofal, A., Fontaine, F. R., Michon, L., Barruol, G., and Tkalčić, H. (2021). Nature of the crust beneath the islands of the Mozambique Channel: Constraints from receiver functions. *J. African Earth Sci.*, 184, article no. 104379.
- Dofal, A., Michon, L., Fontaine, F. R., Rindrarisaona, E., Barruol, G., and Tkalčić, H. (2022). Imaging the lithospheric structure and plumbing system below the Mayotte volcanic zone. *C. R. Geosci.*, 354(S2). Forthcoming.
- Famin, V., Michon, L., and Bourhane, A. (2020). The Comoros archipelago: a right-lateral transform boundary between the Somalia and Lwandle plates. *Tectonophysics*, 789, article no. 228539.
- Feuillet, N., Jorry, S., Crawford, W., Deplus, C., Thinon, I., Jacques, E., Saurel, J.-M., Lemoine, A., Paquet, F., Daniel, R., Gaillot, A., Satriano, C., Peltier, A., Aiken, C., Foix, O., Kowalski, P., Laurent, A., Beauducel, F., Grandin, R., Ballu, V., Bernard, P., Donval, J. P., Géli, L., Gomez, J., Guyader, V., Pelleau, P., Rinnert, E., Besançon, S., Bertil, D., Lemarchand, A., and Van Der Woerd, J. (2021). Birth of a large volcanic edifice offshore Mayotte via lithosphere-scale dyke intrusion. *Nat. Geosci.*, 14(10), 787–795.
- Flower, M. F. J. and Strong, D. F. (1969). The significance of sandstone inclusions in lavas of the Co-

- mores archipelago. *Earth Planet. Sci. Lett.*, 7(1), 47–50.
- Galland, O. (2012). Experimental modelling of ground deformation associated with shallow magma intrusions. *Earth Planet. Sci. Lett.*, 317–318, 145–156.
- Hall, I. R., Hemming, S. R., and LeVay, L. J. (2017). South African climates (Aguhlus LGM Density profile). In *Proceedings of the International Ocean Discovery Program*, volume 361.
- Hasterok, D. (2013). A heat flow based cooling model for tectonic plates. *Earth Planet. Sci. Lett.*, 361, 34–43.
- Hasterok, D. and Webb, J. (2017). On the radiogenic heat production of igneous rocks. *Geosci. Front.*, 8(5), 919–940.
- Jackson, C. A.-L., Schofield, N., and Glenkov, B. (2013). Geometry and controls on the development of igneous sill-related forced folds: A 2-D seismic reflection case study from offshore southern Australia. *GSA Bull.*, 125, 1874–1890.
- Jorry, S. J., Jouet, G., Edinger, E. N., Toucanne, S., Counts, J. W., Miramontes, E., Courgeon, S., Vázquez Riveiros, N., Le Roy, P., and Camoin, G. F. (2020). From platform top to adjacent deep sea: New source-to-sink insights into carbonate sediment production and transfer in the SW Indian Ocean (Glorieuses archipelago). *Mar. Geol.*, 423, article no. 106144.
- Klimke, J., Franke, D., Gaedicke, C., Schreckenberger, B., Schnabel, M., Stollhofen, H., et al. (2016). How to identify oceanic crust—evidence for a complex break-up in the Mozambique Channel, Off East Africa. *Tectonophysics*, 693, 436–452.
- Lemoine, A., Briole, P., Bertil, D., Roullé, A., Foumelis, M., Thinon, I., Raucoules, D., de Michele, M., Valt, P., and Hoste Colomer, R. (2020). The 2018–2019 seismo-volcanic crisis east of Mayotte, Comoros islands: seismicity and ground deformation markers of an exceptional submarine eruption. *Geophys. J. Int.*, 223(1), 22–44.
- Louden, K. E., Sibuet, J. C., and Harmegnies, F. (1997). Variations in heat flow across the ocean—continent transition in the Iberia abyssal plain. *Earth Planet. Sci. Lett.*, 151(3–4), 233–254.
- Lucazeau, F. (2019). Analysis and mapping of an updated terrestrial heat flow data set. *Geochem. Geophys. Geosyst.*, 20, 4001–4024.
- Lucazeau, F., Leroy, S., Autin, J., Bonneville, A., Goutorbe, B., Watremez, L., d’Acremont, E., Düsünur, D., Rolandone, F., Huchon, P., Bellahsen, N., and Tuchais, P. (2009). Post-rift volcanism and high heat-flow at the ocean–continent transition of the eastern Gulf of Aden. *Terra Nova*, 21(4), 285–292.
- Magee, C., Bastow, I. D., van Wyk de Vries, B., Jackson, C. A.-L., Hetherington, R., Hagos, M., and Hoggett, M. (2017). Structure and dynamics of surface uplift induced by incremental sill emplacement. *Geology*, 45(5), 431–434.
- Manga, M., Hornbach, M. J., Le Friant, A., Ishizuka, O., Stroncik, N., Adachi, T., et al. (2012). Heat flow in the Lesser Antilles island arc and adjacent back arc Grenada basin. *Geochem. Geophys. Geosyst.*, 13(8), article no. Q08007.
- Marshall, B. V. and Erickson, A. J. (1974). Heat flow and thermal conductivity measurements, Leg 25, Deep Sea Drilling Project. In *Initial Reports of the Deep Sea Drilling Project Covering Leg 25 of the Cruises of the Drilling Vessel Glomar Challenger, Port Louis, Mauritius to Durban, South Africa*, volume 25, pages 349–355.
- Masquelet, C., Leroy, S., Delescluse, M., Chamot-Rooke, N., Thinon, I., Lemoine, A., Franke, D., Watremez, L., and Werner, P., Sauter and SISMAORE team. (2022). The East-Mayotte new volcano in the Comoros archipelago: structure and timing of magmatic phases inferred from seismic reflection data. *C. R. Geosci.*, 354(S2). Online first.
- Medialdea, T., Somoza, L., Gonzalez, F. J., Vazquez, J. T., de Ignacio, C., Sumino, H., Sanchez-Guillamon, O., Orihashi, Y., Leon, R., and Palomino, D. (2017). Evidence of a modern deep water magmatic hydrothermal system in the Canary Basin (eastern central Atlantic Ocean). *Geochem. Geophys. Geosyst.*, 18, 3138–3164.
- Michon, L. (2016). The volcanism of the Comoros archipelago integrated at a regional scale. In Bachelery, P. et al., editors, *Active Volcanoes of the Southwest Indian Ocean*, pages 333–344. Springer, Berlin, Heidelberg.
- Olu, K. (2014). PAMELA-MOZ01 cruise, L’Atalante R/V.
- Paquet, F., Jorry, S., Deplus, C., Le Friant, A., Bernard, J., Bermell-Fleury, S., Feuillet, N., Gaillot, A., Guérin, C., and Thinon, I. (2019). The Mayotte seismo-volcanic crisis: characterizing a reactivated

- volcanic ridge from the upper slope to the abyssal plain using multibeam bathymetry and backscatter data. In *AGU Fall Meeting Abstracts*. AGU, Washington, D.C.
- Phethean, J. J., Kalnins, L. M., van Hunen, J., Biffi, P. G., Davies, R. J., and McCaffrey, K. J. (2016). Madagascar's escape from Africa: A high-resolution plate reconstruction for the Western Somali Basin and implications for supercontinent dispersal. *Geochem. Geophys. Geosyst.*, 17(12), 5036–5055.
- Poort, J. and Polyansky, O. (2002). Heat transport by groundwater flow during the Baikal rift evolution. *Tectonophysics*, 351(1–2), 75–89.
- Rabinowitz, P. D., Coffin, M. E., and Falvey, D. (1983). The separation of Madagascar and Africa. *Science*, 220(4592), 67–69.
- REVOSIMA (Mayotte Volcanological And Seismological Monitoring Network) (2021). Institut de Physique du Globe de Paris (IPGP), Bureau de Recherches Géologiques et Minières (BRGM), Institut Français de Recherche pour l'Exploitation de la MER (IFREMER), Centre National de la Recherche Scientifique (CNRS). Data collection of the Mayotte volcanological and seismological monitoring network (V.1.0). Institut de Physique du Globe de Paris (IPGP).
- Rinnert, E., Feuillet, N., Fouquet, Y., Jorry, S., Thinon, I., and Lebas, E. (2019). MD 228/MAYOBS.
- Roach, P., Milsom, J., Toland, C., Matchette-Downes, C., Budden, C., Riaroh, D., and Houmadi, N. (2017). New evidence supports presence of continental crust beneath the Comoros: Pesgb. In *Hgs Africa Conference*.
- Sauter, D., Ringenbach, J. C., Cannat, M., Maurin, T., Manatschal, G., and Mcdermott, K. G. (2018). Intraplate deformation of oceanic crust in the west Somalie Basin: Insights from long-offset reflection seismic data. *Tectonics*, 37, 588–603.
- Talwani, M. (1962). Gravity measurements on HMS Acheron in south Atlantic and Indian Oceans. *Geol. Soc. Am. Bull.*, 73(9), 1171–1182.
- Thinon, I. et al. (2022). Volcanism and tectonics unveiled between the EARS and Madagascar: toward a better understanding of the geodynamics of the Comoros archipelago. *C. R. Geosci.*, 354(S2). On-line first.
- Thinon, I., Leroy, S., and Lemoine, A. (2020). SIS-MAORE cruise, RV Pourquoi Pas?
- Vasseur, G., Demongodin, L., and Bonneville, A. (1993). Thermal modelling of fluid flow effects in thin-dipping aquifers. *Geophys. J. Int.*, 112(2), 276–289.
- Von Herzen, R. and Maxwell, A. E. (1959). The measurement of thermal conductivity of deep-sea sediments by a needle-probe method. *J. Geophys. Res.*, 64(10), 1557–1563.
- von Herzen, R. P. and Langseth, M. G. (1965). Present status of oceanic heat flow measurements. *Phys. Chem. Earth*, 6, 385–407.
- Von Herzen, R. P. and Uyeda, S. (1963). Heat flow through the eastern Pacific Ocean floor. *J. Geophys. Res.*, 68(14), 4219–4250.