



HAL
open science

Quaternary faulting in the Upper Rhine Graben revealed by high-resolution multi-channel reflection seismic

Guillaume Bertrand, Philippe Elsass, Gunther Wirsing, Alex Luz

► **To cite this version:**

Guillaume Bertrand, Philippe Elsass, Gunther Wirsing, Alex Luz. Quaternary faulting in the Upper Rhine Graben revealed by high-resolution multi-channel reflection seismic. *Comptes Rendus. Géoscience*, 2006, 338 (8), pp.574 - 580. 10.1016/j.crte.2006.03.012 . hal-03752376

HAL Id: hal-03752376

<https://brgm.hal.science/hal-03752376>

Submitted on 16 Aug 2022

HAL is a multi-disciplinary open access archive for the deposit and dissemination of scientific research documents, whether they are published or not. The documents may come from teaching and research institutions in France or abroad, or from public or private research centers.

L'archive ouverte pluridisciplinaire **HAL**, est destinée au dépôt et à la diffusion de documents scientifiques de niveau recherche, publiés ou non, émanant des établissements d'enseignement et de recherche français ou étrangers, des laboratoires publics ou privés.

Tectonics

Quaternary faulting in the Upper Rhine Graben revealed by high-resolution multi-channel reflection seismic

Guillaume Bertrand^{a,*}, Philippe Elsass^b, Gunther Wirsing^c, Alex Luz^c

^a BRGM ARN, 3, avenue Claude-Guillemin, BP 6009, 45060 Orléans cedex 02, France

^b BRGM SGR-Alsace, 15, rue du Tanin, Lingolsheim, BP 177, 67834 Tanneries cedex, France

^c Landesamt für Geologie, Rohstoffe und Bergbau (LGRB), Albertstraße 5, 79104 Freiburg im Breisgau, Germany

Received 19 January 2006; accepted after revision 20 March 2006

Available online 9 June 2006

Presented by Xavier Le Pichon

Abstract

A high-resolution multichannel seismic reflection river profiling campaign was completed in July 2002 in the southern Upper Rhine graben (URG), along the River Rhine. Preliminary results show apparent Quaternary vertical slip rates, on intra-graben faults that are relatively slow, of the order of a few thousandths to a few hundredths of mm/yr. Moreover, kinematical data from the Ludwigshafen area show decreasing vertical slip rates since the Middle Pleistocene and/or a migration of tectonic activity. While still preliminary, these data show inhomogeneous and relatively slow tectonic activity in the URG that could probably not alone have shaped the Quaternary graben morphology. *To cite this article: G. Bertrand et al., C. R. Geoscience 338 (2006).*

© 2006 Académie des sciences. Published by Elsevier SAS. All rights reserved.

Résumé

Tectonique quaternaire dans le Fossé rhénan supérieur révélée par réflexion sismique haute résolution. Une campagne de réflexion sismique multitrace haute résolution fluviale a été effectuée en juillet 2002 dans le fossé rhénan, le long du Rhin. Les premiers résultats montrent des vitesses verticales apparentes, sur des failles intragraben, de l'ordre de quelques millièmes à quelques centièmes de millimètres par an. Des données de cinématique dans la région de Ludwigshafen montrent des vitesses décroissantes depuis le Pléistocène moyen et/ou une migration de l'activité tectonique vers d'autres secteurs. Bien que préliminaires, ces données montrent une activité tectonique inhomogène et relativement lente qui, seule, peut difficilement avoir modelé la morphologie quaternaire du graben. *Pour citer cet article : G. Bertrand et al., C. R. Geoscience 338 (2006).*

© 2006 Académie des sciences. Published by Elsevier SAS. All rights reserved.

Keywords: Upper Rhine graben; Seismotectonics; Faulting; Vertical slip rate; Seismic reflection profiling

Mots-clés: Fossé rhénan supérieur; Sismotectonique; Faille; Vitesse de glissement verticale; Réflexion sismique

1. Introduction

The Upper Rhine Graben (URG) is a segment of the European Cenozoic rift system that developed in the northwestern forelands of the Alps [13]. It is a NNE–

* Corresponding author.

E-mail address: g.bertrand@brgm.fr (G. Bertrand).

SSW trending crustal-scale small-displacement continental rift [5] that extends over 300 km, from Basel (Switzerland) to Frankfurt (Germany), with an average width of approximately 40 km. It is flanked, in the south, by the Vosges and Black Forest (Schwarzwald) mountains, to the west and the east, respectively. Subsidence and syn-rift sedimentation started in the Late Eocene, and the main rifting phase occurred during the Oligocene and Miocene [10]. Overviews of the geological history of the URG can be found in the literature [6,7,10,12,13].

Despite a relatively low level of seismicity and its intra-plate situation, the URG has experienced several seismic events, among which the 1356 Basel earthquake is one of the strongest ever felt in continental Europe (e.g., [8]). The present diffuse but continuous seismicity, associated with a relatively well-preserved topography of its shoulders, suggests recent to present-day tectonic activity in the URG. Ongoing deformation of the URG has been suggested by several authors (e.g., [1, 2]), but very few data are available on the inner part of the graben and/or the kinematics of faulting. This paper presents new results on Quaternary faulting within the central part of the southern URG, obtained from high resolution seismic reflection river profiling.

2. Data acquisition and processing

A high-resolution multichannel seismic reflection survey was carried out on the River Rhine, from 1st to 12th July 2002, between km 421 (Mannheim) and km 149.5 (Rheinfelden). This campaign has been completed within the framework of the MONIT Interreg 3 project (RSCS/OMS N° 3c.9/PAM N° 3.1.3), dedicated to the modelling of diffuse pollution in the URG aquifer, under the coordination of the ‘Landesanstalt für Umweltschutz Baden-Württemberg’. Twenty-one seismic profiles (lines 1 to 23, lines 8 and 20 were not considered valid) were completed, for a total length of approximately 250 km (Fig. 1).

The seismic source was a 30-ci Sodera MiniGI high-pressure air gun (2000 PSI) towed at 1 m depth. Signals were received by two 24-channels hydrophone streamers also towed at 1 m depth. Distance between shot points was 3.125 m (6.25 m when ground speed was over 1.6 m/s), measured by DGPS (Trimble ProXRS with Omnistar real-time differential correction). Recorded data were stacked, time migrated and time-depth converted. Depth sections (SEG-Y 2 byte integer format) were interpreted using the Geographix SeisVision software.

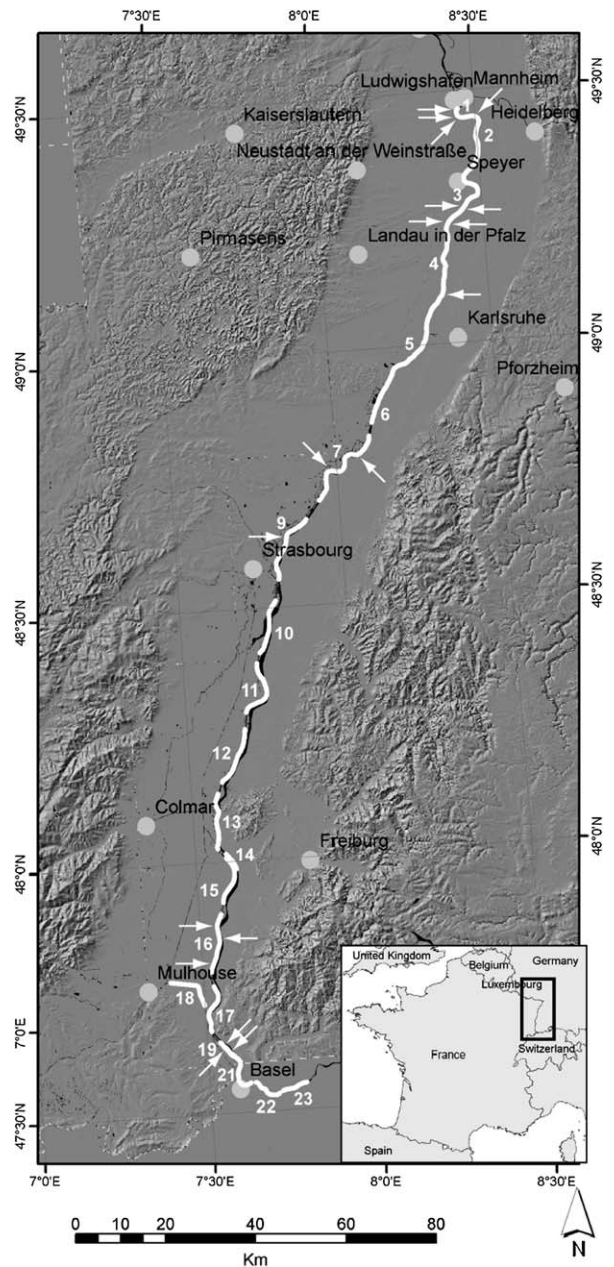


Fig. 1. Location map of the high resolution multi-channel seismic reflection lines completed in July 2002 along the River Rhine for the MONIT Interreg III Project. Thick white lines and numbers are seismic profiles and profile numbers; white arrows show locations of faults observed on the profiles that offset Quaternary horizons.

Fig. 1. Carte de localisation des profils de sismique réflexion haute résolution multitrace, acquise en juillet 2002 dans le cadre du projet Interreg III MONIT. Les lignes et nombres gras en blanc sont les lignes sismiques et leurs numéros; les flèches blanches indiquent la position des failles observées sur les profils qui décalent des horizons quaternaires.

3. Identification of Quaternary faulting

From well documented logs of boreholes located along the River Rhine, sedimentary horizons were identified on the seismic profiles, amongst which several are of Quaternary age. Several faults were identified, amongst which 19 clearly offset the base of the Quaternary and younger horizons (Fig. 2). Twelve out of these 19 were observed on the northern profiles and the remaining 7 on the southern ones. Because of their poor quality, it has not been possible to clearly identify tectonic structures on central profiles, although this does not exclude possible Quaternary faulting in this area.

The high resolution reflection seismic profiles that were completed along the River Rhine form a linear pattern that does not allow the measurement of the strike of identified fault planes. We then tried to correlate the structures on the seismic lines with previously described faults. Industrial data in our possession did not extend close enough to the river, so we used the fault pattern from the 1979 Geothermal Synthesis [4]. Using a GIS, map locations of faults identified on seismic lines and the fault pattern of the 1979 Geothermal Synthesis were georeferenced. It was then possible to propose a strike for 15 out of the 19 faults that offset Quaternary horizons on the seismic lines. Most of these faults, i.e. 10 out of 15, strike approximately parallel to the graben

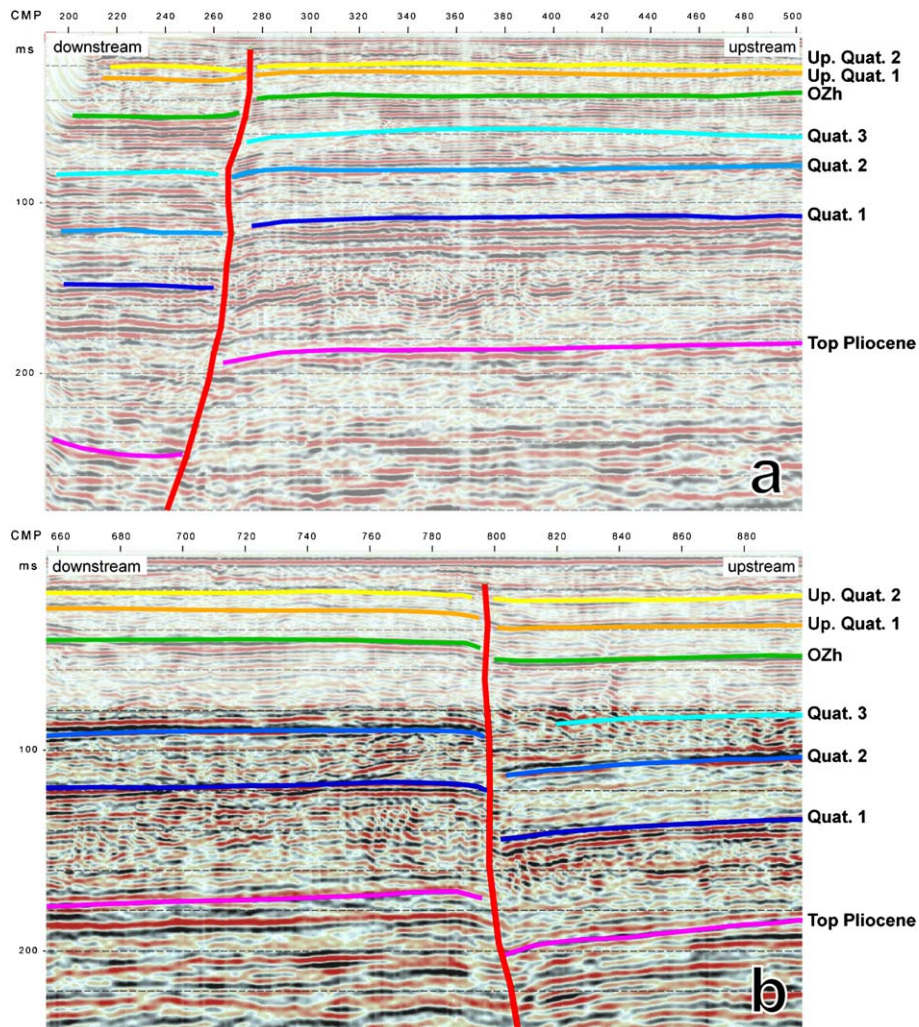
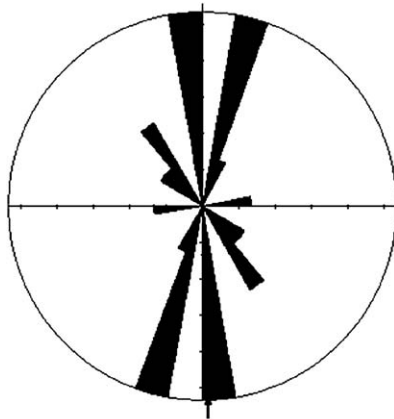


Fig. 2. Examples of reflection seismic sections showing faults offsetting reflectors of Quaternary ages; **a**, line 1, CMP 270; **b**, line 2, CMP 800.
 Fig. 2. Exemples de profils de réflexion sismique montrant des failles décalant des réflecteurs d'âge Quaternaire ; **a**, ligne 1, CMP 270 ; **b**, ligne 2, CMP 800.



Sector angle = 10°
 Scale: tick interval = 5% [0.8 data]
 Maximum = 26.7% [4 data]
 Mean Resultant dir'n = $178-358$
 [95% Confidence interval = $\pm 31^\circ$]

Fig. 3. Rose diagram of proposed strikes of faults identified on the river seismic sections and offsetting Quaternary horizons, deduced from a comparison with the 1979 Geothermal Synthesis fault pattern.

Fig. 3. Diagramme circulaire des directions des failles identifiées sur les profils de sismique fluviale et décalant des horizons quaternaires, déduites de la comparaison avec le réseau de failles de la synthèse géothermique de 1979.

(Fig. 3). The remaining five are oblique to the trend of the graben.

However, one should keep in mind that, although the seismic line positioning using DGPS is very accu-

rate, the georeferencing of the Geothermal Synthesis fault pattern combines several sources of uncertainties. These are: (i) uncertainty on the real location of faults in the original maps (drawn at 1/250 000 scale, and some faults were ‘deduced’ rather than ‘observed’); (ii) uncertainty resulting from scanning the original paper documents and manually digitizing the fault traces; (iii) uncertainty resulting from georeferencing the document (manual rectification). As a consequence, the strikes we propose for the Quaternary active faults observed on the seismic lines, deduced from their geographic correlation with the Geothermal Synthesis fault pattern, have to be considered very cautiously.

4. Quaternary offsets and slip rates

Nineteen faults were observed, on river seismic sections, that offset the base of the Quaternary (top of Pliocene) and, for most of them, younger horizons. Cumulated offset of the base Quaternary horizon by these faults ranges from 7.1 to 61.7 m. Despite poor constrains on fault strikes, vertical velocities averaged over the Quaternary can confidently be deduced from these apparent vertical offsets (throw, considered here as equivalent to dip separation since fault planes are all steeply dipping). Considering an age of 1.8 Ma for the base Quaternary horizon, we propose vertical slip rates ranging from 0.0039 to 0.0343 mm/yr. All are in the order of a few thousandths to a few hundredths of mm/yr (Fig. 4). These velocities are slow, even in the intraplate slow deformation tectonic context of the URG. More-

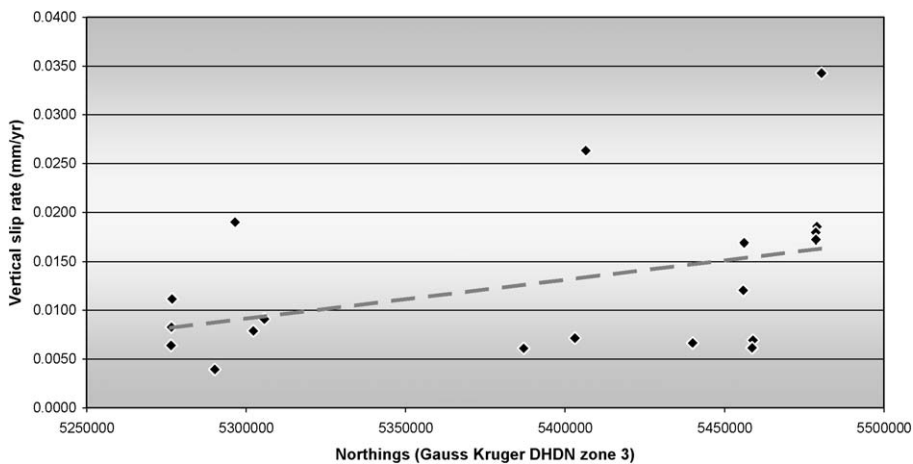


Fig. 4. Apparent vertical slip rates versus latitude (Gauss Kruger DHDN 3 metric system) diagram for 19 individual faults that affect Quaternary horizons on river seismic sections. Positive slope of the linear regression (dashed line) suggests a possible northward increasing gradient of tectonic activity.

Fig. 4. Vitesses verticales apparentes de glissement en fonction de la latitude (système Gauss Kruger DHDN 3 métrique) sur 19 failles affectant des horizons quaternaires sur les profils de sismique fluviale. La pente positive de la droite de régression (ligne pointillée) suggère une tendance à l'accroissement de l'activité tectonique vers le nord.

Table 1

Offsets and vertical slip rates on 8 individual faults from the three northernmost river seismic profiles for the Lower Pleistocene (pre-OZh) and the Middle Pleistocene to Present (post-OZh) periods. OZh is considered to be of Cromerian age (700 kyr) in this area. See text for discussion

Tableau 1

Décalages et vitesses verticales apparentes sur huit failles des trois profils les plus septentrionaux de sismique fluviale pour les périodes Pléistocène inférieur (pré-OZh) et Pléistocène moyen à Actuel (post-OZh). L'horizon OZh est considéré comme étant d'âge Cromérien (700 ka) dans cette partie du Fossé rhénan. Voir discussion dans le texte

CMP	Long	Lat	Period	Depth footwall (m)	Depth hanging wall (m)	Total offset of bottom horizon (m)	Offset for considered period (m)	Slip rate (mm/yr)
270	3459844	5480420	OZh to Present	38.0	49.1	11.1	11.1	0.0159
270	3459844	5480420	Top Pliocene to OZh	187.3	249.0	61.7	50.6	0.0460
800	3459906	5478955	OZh to Present	42.7	42.7	0.0	0.0	0.0000
800	3459906	5478955	Top Pliocene to OZh	172.1	205.5	33.4	33.4	0.0304
445	3461141	5478554	OZh to Present	41.5	51.7	10.2	10.2	0.0146
445	3461141	5478554	Top Pliocene to OZh	181.5	213.8	32.3	22.1	0.0201
800	3462232	5478657	OZh to Present	45.0	55.7	10.7	10.7	0.0153
800	3462232	5478657	Top Pliocene to OZh	171.3	202.3	31.0	20.3	0.0185
4390	3459604	5458922	OZh to Present	21.2	21.2	0.0	0.0	0.0000
4390	3459604	5458922	Top Pliocene to OZh	85.8	98.3	12.5	12.5	0.0114
4500	3459380	5458660	OZh to Present	20.7	20.7	0.0	0.0	0.0000
4500	3459380	5458660	Top Pliocene to OZh	83.7	94.8	11.1	11.1	0.0101
5840	3456127	5456109	OZh to Present	21.2	25.2	4.0	4.0	0.0057
5840	3456127	5456109	Top Pliocene to OZh	74.4	104.8	30.4	26.4	0.0240
5950	3455904	5455858	OZh to Present	18.9	22.5	3.6	3.6	0.0051
5950	3455904	5455858	Top Pliocene to OZh	81.4	103.1	21.7	18.1	0.0165

over, we considered a relatively young age for the base Quaternary horizon (1.8 Ma); an older age would have yielded even slower velocities.

One should keep in mind here that only vertical velocities are considered. The reasons are that: (i) large uncertainties are attached to the determination of fault strikes and (ii) it is not possible from our data set to quantify horizontal displacements (strike separations). However, a Quaternary strike-slip component along some faults observed on river seismic lines could not be excluded as some sections show clear 'flower structures' typical of such horizontal displacements.

Linear regression on the velocity versus latitude diagram (Fig. 4) has a positive slope that shows a tendency for velocities to increase northward. This might indicate a northward increase of Quaternary tectonic activity. This would be in good agreement with the distribution of Quaternary deposits within the URG, i.e. thicker to the North and thinner to the South. This observation, however, remains to be confirmed as our data are too scarce to be statistically significant.

5. Evolution of tectonic activity during Quaternary

One of the Quaternary horizons identified on the river reflection seismic profiles is the 'Oberer Zwischenhorizont' (OZh). Out of the 19 faults offsetting Quaternary horizons on the seismic lines, eight cut through

or are sealed by the OZh horizon. These eight faults were identified on seismic lines 1 to 3 (northernmost), near Mannheim, Ludwigshafen and Speyer (Fig. 1). The OZh horizon was either absent or not identified in the vicinity of the other 11 identified faults with Quaternary activity. Based on palynology data, the OZh horizon is considered, in this area, to be of Cromerian age [3]. If we consider offsets (or absence of offset) of the two horizons of known age (base Quaternary and OZh), it is possible to deduce pre- and post-Cromerian vertical velocities (Lower Pleistocene and Middle Pleistocene to Present-day, respectively; Table 1). We have considered here a standard age of 0.7 Ma for the OZh horizon. Vertical slip rates are presented on Fig. 5. For all 8 faults, pre-Cromerian (i.e. Lower Pleistocene) velocities are faster than post-Cromerian (i.e. Middle Pleistocene to Present-day). Five faults show a clear decrease of vertical slip rates since the Middle Pleistocene relative to the Lower Pleistocene, while the remaining three ones even become inactive. These results suggest, since Cromerian time, either: (i) a decrease of tectonic activity in the URG, or (ii) a migration of tectonic activity from the Mannheim area to other (northern?) parts of the graben.

However, these data show that Quaternary tectonic activity within the URG was not uniform throughout time. It has decreased and/or been redistributed since the Middle Pleistocene. A thorough knowledge of ages

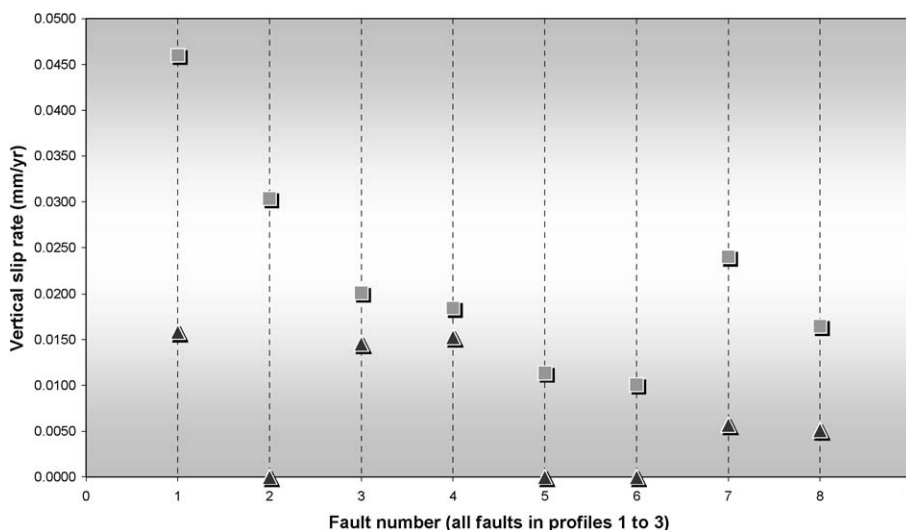


Fig. 5. Apparent vertical slip rates during the Lower Pleistocene (grey squares) and the Middle Pleistocene to Present (black triangles) on eight individual faults from the three northernmost river seismic profiles where the OZh ('Oberer Zwischenhorizont') was identified. OZh is considered to be of Cromerian age (700 kyr) in this area. See text for discussion.

Fig. 5. Vitesses verticales apparentes au Pléistocène inférieur (carrés gris) et du Pléistocène moyen à l'Actuel (triangles noirs) sur huit failles des trois profils les plus septentrionaux de sismique fluviale où l'horizon OZh (Oberer Zwischenhorizont) a été identifié. L'horizon OZh est considéré comme étant d'âge Cromérien (700 ka) dans cette partie du Fossé rhénan. Voir discussion dans le texte.

of Quaternary horizons from the river seismic profiles would allow, for each fault, to trace the history of its Quaternary kinematics. Compilation of these data would display the evolution and distribution of tectonic activity within the URG through the Quaternary. To our knowledge, these chronological data are unfortunately not available at this time.

6. Conclusion

These preliminary results confirm that the URG suffered tectonic activity during the Quaternary. However, calculated vertical velocities are slow, of the order of a few thousandths to a few hundredths of mm/yr, even within the intraplate slow displacement tectonic context of the URG. A recent study from Nivière et al. [9], on major faults in the Freiburg area (southeastern URG) yielded similar velocities (of the order of a few hundredths of mm/yr since the Middle Pleistocene). On the other hand, Rozsa et al. [11] suggest higher velocities, in the order of a few tenths of mm/yr, on individual faults in the Freiburg area, although these values are deduced from levelling data and could include other causes than tectonics alone. We could not exclude, however, that large structures bounding the graben might accommodate higher velocities than intra-graben faults.

Anyway, such slow vertical slip rates suggest that the Quaternary sedimentary filling of the URG does not

solely result from faulting. Other causes have to be considered, such as subsidence or climate, which may have played a major role on the Quaternary sedimentation in the URG and the shaping of its present day morphology.

In addition, these results suggest a possible decrease and/or migration of tectonic activity in the URG since the Middle Pleistocene. One should keep in mind however that we are missing, to this point, crucial chronological data (ages) on Quaternary horizons to confirm this conclusion. Such data would allow us to better constrain tectonic and kinematical processes involved in the Quaternary evolution of the URG.

These results however give new insights on the Quaternary evolution of the URG. They allow one to foresee promising research developments in active tectonics and seismic hazard, which are crucial topics in this densely populated and industrialized region.

References

- [1] S. Baize, M. Cushing, F. Lemeille, T. Granier, B. Grellet, D. Carbon, P. Combes, C. Hibschi, Inventaire des indices de rupture affectant le Quaternaire en relation avec les grandes structures connues en France métropolitaine et dans les régions limitrophes, *Mém. Soc. géol. France* 175 (2002) (142 p., 1 pl. hors-texte).
- [2] J. Behrmann, O. Hermann, M. Horstmann, D. Tanner, G. Bertrand, Anatomy and kinematics of continental oblique rifting revealed: a 3D case study of the SE upper Rhine graben (Germany), *AAPG Bull.* 87 (2003) 1105–1121.

- [3] W. Bludau, Altpleistozäne Warmzeiten im Alpenvorland und im Oberrheingraben; ein Beitrag der Palynologie zum Uhlenberg-Problem, *Geol. Bavarica* 99 (1995) 119–133.
- [4] BRGM ‘Service géologique régional Alsace’ and Geologisches Landesamt Baden-Württemberg, Synthèse Géothermique du Fossé rhénan supérieur/Geothermische Synthese des Oberrheingrabens. Strasbourg, France, Freiburg, Germany, 1979 (109 p., 23 figs.).
- [5] R.H. Groshong Jr., Construction and validation of extensional cross sections using lost area and strain, with application to the Rhine graben, in: Buchanan, D.A. Nieuwland (Eds.), *Modern developments in structural interpretation, validation and modelling*, *Geol. Soc. Lond. Spec. Publ.* 99 (1996) 79–87.
- [6] J.H. Illies, Taphrogenesis and plate tectonics, in: J.H. Illies, K. Fuchs (Eds.), *Approaches to Taphrogenesis*, Schweizerbart, Stuttgart, Germany, 1974, pp. 433–460.
- [7] J.H. Illies, Ancient and recent rifting in the Rhinegraben, *Geol. Mijnbouw.* 56 (1977) 329–350.
- [8] J. Lambert, T. Winter, T.J.B. Dewez, P. Sabourault, New hypotheses on the maximum damage area of the 1356 Basel earthquake (Switzerland), *Q. Sci. Rev.* 24 (2005) 381–399.
- [9] B. Nivière, A. Brüstle, S. Carretier, G. Bertrand, U. Fracassi, T. Winter, Quantification of the Pleistocene tectonic deformation along the southeastern border of the Upper Rhine Graben (Freiburg im Breisgau area, Germany), *Tectonics*, submitted for publication.
- [10] R. Pflug, *Bau und Entwicklung des Oberrheingrabens*, Darmstadt. Wiss. Buchgesellschaft, Darmstadt, Germany, 1982 (145 p.).
- [11] S. Rozsa, B. Heck, M. Mayer, K. Seitz, M. Westerhaus, K. Zippelt, Determination of displacements in the upper Rhine graben area from GPS and leveling data, *Int. J. Earth Sci. (Geol. Rundsch.)* 94 (2005) 538–549.
- [12] C. Sittler, Le Fossé rhénan en Alsace : aspect structural et histoire géologique, *Rev. Géogr. Phys. Géol. Dyn.* 11 (1969) 465–494.
- [13] P.A. Ziegler, European Cenozoic rift system, *Tectonophysics* 208 (1992) 91–111.