



**HAL**  
open science

## A Bayesian network-based probabilistic framework for updating aftershock risk of bridges

Enrico Tubaldi, Francesca Turchetti, Ekin Ozer, Jawad Fayaz, Pierre Gehl,  
Carmin Galasso

► **To cite this version:**

Enrico Tubaldi, Francesca Turchetti, Ekin Ozer, Jawad Fayaz, Pierre Gehl, et al.. A Bayesian network-based probabilistic framework for updating aftershock risk of bridges. *Earthquake Engineering and Structural Dynamics*, 2022, 51 (10), pp.2496 - 2519. 10.1002/eqe.3698 . hal-03717327

**HAL Id: hal-03717327**

**<https://brgm.hal.science/hal-03717327>**

Submitted on 8 Jul 2022

**HAL** is a multi-disciplinary open access archive for the deposit and dissemination of scientific research documents, whether they are published or not. The documents may come from teaching and research institutions in France or abroad, or from public or private research centers.

L'archive ouverte pluridisciplinaire **HAL**, est destinée au dépôt et à la diffusion de documents scientifiques de niveau recherche, publiés ou non, émanant des établissements d'enseignement et de recherche français ou étrangers, des laboratoires publics ou privés.

# A Bayesian network-based probabilistic framework for updating aftershock risk of bridges

Enrico Tubaldi<sup>1</sup>  | Francesca Turchetti<sup>1</sup>  | Ekin Ozer<sup>1,5</sup>  | Jawad Fayaz<sup>2,3</sup>  | Pierre Gehl<sup>4</sup>  | Carmine Galasso<sup>2</sup> 

<sup>1</sup>Department of Civil and Environmental Engineering, University of Strathclyde, Glasgow G1 1XJ, UK

<sup>2</sup>Department of Civil, Environmental, and Geomatic Engineering, University College London (UCL), London WC1E 6BT, UK

<sup>3</sup>School of Computing, Engineering & Digital Technologies, Teesside University, Teesside TS1 3BX, UK

<sup>4</sup>Bureau de Recherches Géologiques et Minières (BRGM), Orléans Cedex 2 45060, France

<sup>5</sup>School of Civil Engineering, University College Dublin, Dublin D04V1W8, Ireland

## Correspondence

Francesca Turchetti, University of Strathclyde, Glasgow G1 1XJ, UK.  
Email: [francesca.turchetti@strath.ac.uk](mailto:francesca.turchetti@strath.ac.uk)

## Funding information

European Union's Horizon 2020 grant agreement, Grant/Award Number: 821046

## Abstract

The evaluation of a bridge's structural damage state following a seismic event and the decision on whether or not to open it to traffic under the threat of aftershocks (ASs) can significantly benefit from information about the mainshock (MS) earthquake's intensity at the site, the bridge's structural response, and the resulting damage experienced by critical structural components. This paper illustrates a Bayesian network (BN)-based probabilistic framework for updating the AS risk of bridges, allowing integration of such information to reduce the uncertainty in evaluating the risk of bridge failure. Specifically, a BN is developed for describing the probabilistic relationship among various random variables (e.g., earthquake-induced ground-motion intensity, bridge response parameters, seismic damage, etc.) involved in the seismic damage assessment. This configuration allows users to leverage data observations from seismic stations, structural health monitoring (SHM) sensors and visual inspections (VIs). The framework is applied to a hypothetical bridge in Central Italy exposed to earthquake sequences. The uncertainty reduction in the estimate of the AS damage risk is evaluated by utilising various sources of information. It is shown that the information from accelerometers and VIs can significantly impact bridge damage estimates, thus affecting decision-making under the threat of future ASs.

## KEYWORDS

aftershock risk, Bayesian network, joint probabilistic demand model, structural health monitoring, visual inspections

## 1 | INTRODUCTION

Earthquakes typically occur in sequences characterised by a seismic event with a larger magnitude than all others. Such major events constitute mainshocks (MSs), generally followed by several smaller-magnitude aftershocks (ASs) clustered in space and time. This may not strictly apply to triggered earthquakes where the energy or stress due to the seismic waves generated by a fault rupture triggers a distant earthquake with a different rupture zone (and potentially similar or even larger magnitude) (e.g.,<sup>1</sup>). These sequences can cause vast losses due to direct repair costs, business interruptions and casualties, especially if the affected structures and infrastructure are left unrepaired upon the initial damage due to the first event (often due to the short time between events).

This is an open access article under the terms of the [Creative Commons Attribution](https://creativecommons.org/licenses/by/4.0/) License, which permits use, distribution and reproduction in any medium, provided the original work is properly cited.

© 2022 The Authors. *Earthquake Engineering & Structural Dynamics* published by John Wiley & Sons Ltd.

The accurate evaluation of the state of infrastructural assets in the aftermath of major earthquakes is of paramount importance for optimal emergency management decisions and ensuring their safe use under the threat of ASs. It is also essential to correctly allocate and prioritise resources to minimise further casualties and business interruptions and speed up recovery from disruption (e.g.,<sup>2</sup>).

Many approaches and frameworks have been proposed in recent decades to address the post-earthquake functionality of bridges and their AS risk, aiming to support the decision on opening the bridge to traffic. Mackie and Stojadinović,<sup>3</sup> among others, developed an approach based on the performance-based earthquake engineering (PBEE) framework by the Pacific Earthquake Engineering Research (PEER) Center to evaluate the loss in load-carrying and traffic-carrying capacity of bridges following an *MS*. However, their approach disregarded the increased risk of damage due to ASs. On the other hand, Franchin and Pinto<sup>4</sup> proposed a method for deciding whether or not to allow traffic on a bridge based on the survival probability of an *MS*-damaged bridge under AS hazard. However, the problem of the uncertain knowledge of the bridge state following an *MS* was not addressed in their study. Instead, they assumed that the bridge damage is both analytically and visually detectable and that a near real-time estimation of the *MS* source and site parameters is available (e.g., from regional seismic stations/networks).

The accurate evaluation of the level of damage suffered by a structure following an earthquake is critical for a correct estimation of its AS risk (e.g.,<sup>5,6</sup>). Obviously, in the absence of direct evaluations of damage (e.g., via field inspections), knowledge of the earthquake-induced ground-motion intensity experienced by the structure is essential for inferring the level of damage sustained by it. The simplest approach for evaluating ground-motion intensity at a given target site involves using a ground motion model (GMM), estimating the amplitude of a ground-motion intensity measure (*IM*) given the information on the location and magnitude of the earthquake (and eventually other site-specific features). However, the dispersion associated with GMMs is generally large, thus leading to highly uncertain estimates of the ground-motion *IM*. This uncertainty could be reduced by using information from seismic stations near the site (e.g.,<sup>7–11</sup>). However, the correlation between intensities at two points reduces significantly with the distance between them; hence, the *IM* estimate is generally still quite uncertain unless a station is located very close to the site. In any case, a fragility model (i.e., probability of damage as a function of a hazard intensity measure) is needed to estimate the damage level given the uncertainty of the *IM* (and modelling uncertainties). This results in uncertainty propagation in damage and loss estimates, leading to further uncertainty in assessing structural/nonstructural risk under future earthquakes.

One way to improve the knowledge of the actual state of a structure of interest is by exploiting observations from structural health monitoring (SHM) systems (e.g.,<sup>12,13</sup>). Most existing SHM methodologies rely on vibration measurements through accelerometers to detect changes in the dynamic properties of the system that can be attributed to structural damage (e.g.,<sup>14</sup>). Alternative sensors have also been proposed for the dynamic identification and damage detection (e.g., Global Positioning System (GPS) receivers, cameras, etc.) (e.g.,<sup>15–18</sup>). Visual inspections (VIs) after earthquakes help determine the damage's severity, though they only partly capture effects of the seismic action (e.g., surface cracks in concrete, residual displacements [RDs]). Moreover, conclusions on the level of damage associated with these effects can be subjective, prone to human error and unreliable.

Further studies have proposed approaches for improving bridge damage estimates using information from sensors and VIs. For example, Alessandri et al.<sup>19</sup> proposed a method for evaluating post-earthquake bridge operability based on a rational combination of information derived from numerical analyses and in situ inspections. A Bayesian approach was developed to update the *MS* damage probability and thus the AS risk using the observation made by VIs. The study showed that in situ inspections could drastically affect and modify the damage estimates for a structure, helping to decide whether to open traffic on bridges.

Limongelli et al.<sup>13</sup> developed a framework for quantifying the value of SHM sensor information for post-earthquake emergency management of bridges, discussing alternative monitoring strategies. A similar framework was applied by Giordano and Limongelli<sup>20</sup> to evaluate the value of information of SHM sensors for bridge risk management, considering AS hazard. The first natural frequency of the structure was considered as damage sensitive feature in the study. Tubaldi et al.<sup>21</sup> developed a Bayesian network (BN)-based approach for evaluating and comparing the contribution of alternative data sources such as free-field seismic stations, GPS receivers, and structure-mounted accelerometers for bridge seismic risk assessment purposes. The comparison was conducted using two alternative measures that quantify the added value of information from the observations, based on pre-posterior variance and relative entropy reduction concepts. It was shown that the information from an accelerometer mounted on a bridge deck is superior in terms of uncertainty reduction to that provided by seismic stations located not very close to the site or by GPS receivers.

The assessment of the AS risk for bridges – and thus decision making on post-earthquake emergency management operations – may significantly benefit from the synergy of the various approaches outlined above and from the fusion of

heterogeneous pieces of available information. The BN framework developed by Tubaldi et al.<sup>21</sup> only considers an *MS* scenario; in this study, the framework is further extended to include *ASs* in the risk assessment of bridge structures. Furthermore, for the first time, risk updating is carried out by combining valuable information from seismic stations, SHM sensors and VIs. The framework extension requires defining an *AS* hazard model that describes the frequency and intensity of *ASs* following an *MS* and developing a model that quantifies the damage accumulation under multiple *ASs*, given the damage experienced in the *MS* and the *IMs* of the *ASs*. The framework is applied to evaluate the *AS* risk of a case-study two-span bridge model, which is assumed to be located in Central Italy. This area was exposed to a series of *ASs* during the Central Italy earthquake of 2016–2017 (e.g.,<sup>22,23</sup>).

Section 2 illustrates the various models involved in the proposed BN. Section 3 presents the BN developed to describe the relationship between the various parameters involved in seismic damage assessment and updating of these parameters based on additional available information from different sources. Finally, Section 4 illustrates the implementation of the method on the two-span bridge as an illustrative case study. This is followed by a discussion of the results and some concluding remarks in Section 5.

## 2 | MODELS FOR AFTERSHOCK RISK ASSESSMENT

This section describes the various models required to develop the BN for *AS* risk assessment, along with the parameters involved and the observations required for updating them.

### 2.1 | Mainshock analysis

A GMM is required to estimate the probability distribution of a ground-motion intensity measure for the *MS* experienced by the considered bridge at the *i*th site of interest,  $IM_{MSi}$ , given the following variables that are assumed to be known at the end of the earthquake: moment magnitude of the *MS* earthquake ( $M_{MS}$ ); a measure of the source-to-site distance  $R_{MSi}$ , for instance, assuming a point-source event, for simplicity; other parameters, collected in the vector  $\mathbf{s}_i$ , characterising the fault (such as those describing the faulting mechanism, fault geometry, depth to the top of the rupture) and site properties. In general, a GMM is characterised by the following form (e.g.,<sup>24</sup>):

$$\log(IM_{MSi}) = f(M_{MS}, R_{MSi}, \mathbf{s}_i) + \eta + \zeta_i \quad (1)$$

where  $f(M_{MS}, R_{MSi}, \mathbf{s}_i)$  is a function describing the lognormal mean of  $IM_{MSi}$  given  $M_{MS}$ ,  $R_{MSi}$  and  $\mathbf{s}_i$ ;  $\eta$  the inter-event (or between-event) error term and  $\zeta_i$  is the intra-event (or within-event) error term.

The inter- and intra-event variabilities of a GMM describe the multi-level variabilities inherited in the ground motion recordings that arise from multiple station recordings for multiple earthquake events. Specifically, the inter-event error term describes the systematic variability in the ground motions throughout the region produced by different earthquakes of the same magnitude and rupture features. The intra-event error describes the variability in ground-motion intensity at various sites of the same soil classification and distance from the source during a single earthquake (e.g.,<sup>25</sup>). Thus, following Park et al.<sup>26</sup> and Crowley et al.,<sup>27</sup> the same inter-event variability is applied to all sites of interest for a given earthquake scenario. In contrast, the intra-event variability is represented by a spatially correlated Gaussian random field. This can be built based on the intra-event error terms  $\zeta_i$  and the correlation coefficient  $\rho_{ij}$  between the ground-motion parameters at two sites  $i$  and  $j$  for  $i, j = 1, 2, \dots, N_{\text{sites}}$ , where  $N_{\text{sites}}$  is the number of sites of interest. The corresponding covariance matrix of the ground motion *IM* field has the following form:

$$\Sigma_{\text{IM}} = \begin{bmatrix} \sigma_\eta^2 + \sigma_{\xi_i}^2 & \cdots & \sigma_\eta^2 + \rho_{ij}\sigma_{\xi_i}\sigma_{\xi_j} \\ \vdots & \ddots & \vdots \\ \cdots & \cdots & \sigma_\eta^2 + \sigma_{\xi_j}^2 \end{bmatrix} \quad (2)$$

where  $\sigma_\eta$  and  $\sigma_\xi$  represent the standard deviations of the inter- and intra-event error terms provided by the GMM, respectively. Further details about this representation of the ground-motion field can be found in Gehl et al.<sup>8</sup> The field observations of the ground-motion parameters at seismic stations can be used as evidence to update the prior estimates

of the *IM* at the site of interest. The spatial correlation structure between the *IMs* at the monitored points and the target site plays a significant role in propagating the information from observed *IMs* to unobserved ones (e.g.,<sup>28</sup>).

## 2.2 | Aftershock hazard analysis

The magnitude and location of an *MS* event can be used to obtain realistic *AS* scenarios. Several alternate methods available in the literature can be used to compute the seismicity/source parameters of *ASs* from the parameters of *MSs*. For example, Reasenberg and Jones proposed a stochastic Bayesian parametric model that allows estimating the probabilities of occurrence for *ASs* and larger *MSs* during intervals following an *MS*. The estimate of the model parameters is obtained with Bayesian statistics using the ongoing *AS* sequence and a suite of historic California *AS* sequences. Currently, one of the most popular models to describe the time-dependent seismicity of a region is the space-time Epidemic-Type Aftershock Sequence (ETAS) model (e.g.,<sup>30,31</sup>). The model's premise is that all earthquake events tend to trigger *ASs* with a stationary magnitude-dependent relation between them. The model considers earthquake seismicity from *ASs* (caused by internal stress adjustments in the seismogenic system) and background earthquakes (caused by forces within the plate tectonics, fluid/magma intrusion, slow slip, etc.). The ETAS model is a point process representing the occurrence of earthquakes for a given magnitude threshold over a given temporal and spatial range. Due to the computational complexity of the ETAS model, particularly in terms of the location of *ASs*, simpler approaches such as the branching aftershock sequence (BASS) model (e.g.,<sup>32</sup>) are available that probabilistically compute consistent source-to-site distances between the *MSs* and *ASs*. Apart from the models that relate the earthquake sequences using the causal event parameters, some methods propose the casual relations based on the intensity measures of the ground motions. For example, Fayaz et al.<sup>33</sup> proposed a novel approach that uses time-series modelling concepts to temporally correlate the Arias intensity (used as a proxy for the energy content of ground motions) of various earthquakes sequences.

Generally, for the purposes of structural analysis and risk analysis, the above-mentioned procedures are also used to select consistent *MS-AS* ground-motion scenarios and records. Recently, Goda and Taylor<sup>34</sup> proposed an *AS* record selection procedure that can be used to simulate time-series data for *MS-AS* sequences. The study used the generalised Omori's law (e.g.,<sup>35</sup>) as the basis of generating artificial sequences and simulated a series of events with their time and magnitude stamps. For simplicity, they used the same source-to-site distance *R* for *MS* and *AS* events. Alessandri et al.<sup>19</sup> combined *AS* hazard analysis using Omori's law and Latin Hypercube Sampling technique for selection of *MS-AS* ground motions to conduct an *AS* risk assessment of bridge structures. Furthermore, a simplistic approach for simulating *MS-AS* sequences is to use Båth's law (e.g.,<sup>36</sup>) that postulates that the largest *AS* for a given *MS* is on average 1.2 moment-magnitude units lower than the *MS*.

In this study, for simplicity, the general procedure adopted by Papadopoulos et al.<sup>37</sup> is utilised to compute the number of *ASs*, their moment magnitudes ( $M_{AS}$ ), time between the *MS* and *ASs* ( $\Delta t$ ), and the distance between the epicentre of the *MS* and that of the *AS* ( $r_{epi}$ ). The sequences are generated by means of the triggering component of the ETAS model. The model is based on three uncoupled probability distributions that model (a) the direct offspring productivity; (b) the spatial; and (c) the temporal distribution of the triggered earthquakes, as well as a magnitude distribution of earthquakes derived from the Gutenberg–Richter (GR) law. Specifically, the simulation of *MS*-consistent *AS* scenarios in this study uses Equations (3)–(6). First, the number of direct offspring events from an *MS* event with a magnitude  $M_{MS}$  is sampled from a Poisson distribution with mean  $k(M_{AS})$  given in Equation (3). Then, for each of the offspring events, the distance  $r_{epi}$  between the epicentres of the two events and the inter-arrival time  $\Delta t$  between the parent and offspring event are simulated using Equations (4) and (5), respectively, where  $u_t$  and  $u_r$  are uniformly distributed random variables over the range [0,1], and  $A, a, p, c, D, q, \gamma$  are constant parameters representing the general spatial and temporal distributions of *AS* events and are estimated mainly through maximum likelihood estimation (e.g.,<sup>31,38</sup>). Similarly, for each offspring *AS*, the corresponding magnitude  $M_{AS}$  is sampled from the GR distribution using Equation (6), where  $u_m$  is a uniformly distributed random variable over the range [0,1],  $b$  a constant parameter that represents the regional level of seismicity and  $M_{min}$  is the minimum considered magnitude. Equation (6) refers to the case of untruncated GR distributions with only a lower bound. After the direct offspring *ASs* (i.e., events triggered by the *MS*) are defined, the second generation of offspring events (triggered by direct *ASs*) can be sampled by repeating the procedure using the first-generation offspring as parent events. The second-generation offspring events can be again used as seeds for a third set and so forth until the sequence eventually dies out (zero offspring are sampled) or there are no more seed earthquakes within the time of interest. A reasonable time span can be used to dictate the time of interest within which the majority of *ASs* is expected to occur, and bridges are not likely to be repaired (e.g., 1–3 years). In this study, whose focus is on the rapid response to

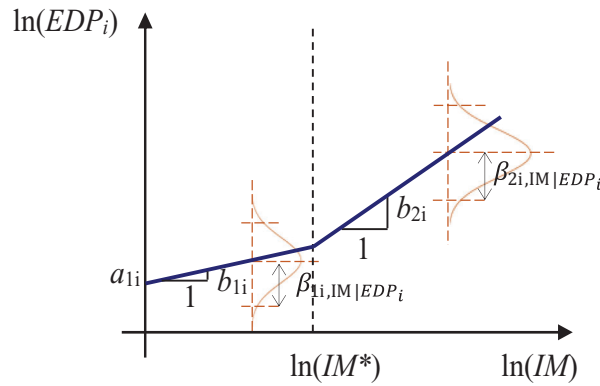


FIGURE 1 Illustration of the bilinear regression model used in this study

earthquakes, a shorter time span of a few weeks might be considered. Earthquakes simulated outside of this time interval are usually discarded (e.g.,<sup>37</sup>).

$$k(M_{AS}) = A \times \exp(a(M_{MS} - M_{\min})) \quad (3)$$

$$r_{epi} = d \times \exp(\gamma(M_{AS} - M_{\min})) \sqrt{u_r^{1/(1-q)} - 1} \quad (4)$$

$$\Delta t = -c + c(1 - u_t)^{1/(1-p)} \quad (5)$$

$$M_{AS} = -\frac{\ln(1 - u_m)}{b \ln 10} + M_{\min} \quad (6)$$

The same GMM employed for the *MS* can be used to relate the *IM* of the *AS*s, collected in the vector  $\mathbf{IM}_{AS}$ , to the *AS* source to site distance ( $\mathbf{R}_{AS}$ ) as well as the magnitude of the *AS*s ( $M_{AS}$ ). However, the framework can be easily updated to include *AS* specific GMMs, based on studies like Lee et al.;<sup>39</sup> similarly, the correlations between and within the *IM* estimates of *MS* and *AS* ground motions can be easily included in the proposed approach. Yet, the use of average spectral acceleration over a period range as the considered *IM* reduces significant differences. Furthermore, there is a lack of usable *AS* recordings in the available databases to develop *AS*-specific GMMs and correlation models (e.g.,<sup>37</sup>). Hence, most similar studies (e.g.,<sup>40</sup>) have reverted to the use of the same GMMs for both *MS* and *AS*.

### 2.3 | Mainshock response and damage assessment

Given the *MS* ground-shaking intensity, a statistical model is required to describe the joint probability distribution of the engineering demand parameters (*EDPs*) of interest for increasing intensity levels (e.g.,<sup>41</sup>). Furthermore, modelling the correlation structure between the various parameters of interest is very important as it is the basis for updating the probabilistic distribution of one *EDP* (e.g., floor acceleration in a building) given the observation of another (e.g., storey drift).

Alternative approaches can be employed to develop a joint probabilistic seismic demand model (PSDM), such as multi-stripe analysis (e.g.,<sup>42</sup>), incremental dynamic analysis (e.g.,<sup>43</sup>) or cloud analysis (e.g.,<sup>44</sup>). Cloud analysis is adopted in this study, given its computational efficiency and resulting accuracy. For this purpose, the computational model of the considered structure is analysed under a set of ground-motion records of different *IM* levels. The response parameters ( $EDP_i$ , for  $i = 1, 2, \dots, N_{EDP}$ ) are used as target variables for a regression model. In particular, a bilinear model is considered in this study (e.g.,<sup>45,46</sup>) since it allows a better description of the trend of the structural response with the ground-motion intensity. The model for the generic *i*th *EDP* is given in Equation (7) (see Figure 1):

TABLE 1 Park et al. (1985) damage index classification

Level	Calculated damage index	Degree of damage
1	$D < 0.1$	Slight damage
2	$0.1 < D < 0.25$	Minor damage
3	$0.25 < D < 0.4$	Moderate damage
4	$0.4 < D < 1.0$	Severe damage
5	$D > 1.0$	Partial or total collapse

$$\ln(EDP_i|IM) = [a_{1i} + b_{1i} \ln(IM) + \varepsilon_{1i} (\sim N(0, \beta_{1i}))] H(IM - IM^*) + [a_{2i} + b_{2i} \ln(IM^*) + b_{2i} (\ln(IM) - \ln(IM^*)) + \varepsilon_{2i} (\sim N(0, \beta_{2i}))] [H(IM^* - IM)] \quad (7)$$

where  $a_1$  is the intercept of the first segment,  $b_i$  for  $i = 1, 2$  are the slopes of the two segments,  $IM^*$  is the breakpoint  $IM$ , which is defined as the point of intersection of the two segments.

The step function  $H(\cdot)$  controls which of the two segments must be considered (i.e.,  $H = 0$  for  $IM \leq IM^*$ , and  $H = 1$  for  $IM > IM^*$ ). The probability distribution of each  $EDP$  is also described by the values of two random variables (i.e., the error terms  $\varepsilon_{1i} (\sim N(0, \beta_{1i}))$  and  $\varepsilon_{2i} (\sim N(0, \beta_{2i}))$ ), which are characterised by a normal distribution with zero mean and standard deviations  $\beta_{1i}$  and  $\beta_{2i}$ . Moreover, to define a joint probability density function (PDF) for the various  $EDPs$ , a covariance matrix must be assigned, which has the same form as that of Equation (2). For this purpose, different correlation coefficients must be estimated for the two conditions corresponding to  $IM \leq IM^*$  and  $IM > IM^*$ , thus, leading to two correlation matrices. The  $EDPs$  considered in this study are the peak transient displacement ( $TD$ ), the  $RD$  and the peak absolute acceleration ( $PA$ ) at the bridge deck level. The first two parameters may be measured using GPS receivers, laser vibrometer, transducers and cameras, whereas  $PA$  is measured using accelerometers.

In addition to the above response parameters, two more  $EDPs$  are needed to define the VI outcomes,  $\varepsilon_{cc}$  and  $\varepsilon_{ct}$ , respectively, denoting the maximum strain of concrete cover in compression and tension experienced during the  $MS$ . For simplicity, it is assumed that a VI provides information only on whether concrete cracking and crushing have occurred or not at the base of bridge piers. These two events are defined by  $\varepsilon_{cc}$  and  $\varepsilon_{ct}$  exceeding their respective limits  $\bar{\varepsilon}_{cc}$  and  $\bar{\varepsilon}_{ct}$ , which are in general also random variables. The state of the bridge is described in this study by a global damage index ( $D$ ), which is an extension of the Park and Ang<sup>47</sup> damage index to the case of biaxial loading. The Park and Ang<sup>47</sup> damage index is expressed by:

$$D_{PA} = \frac{d_m}{d_u} + \beta_D \frac{E_h}{F_y d_u} \quad (8)$$

where  $d_m$  is the maximum displacement of the structural member,  $d_u$  the ultimate curvature displacement,  $E_h$  the dissipated hysteretic energy and  $F_y$  is the yielding strength of the structural member;  $\beta_D$  is a dimensionless empirical factor describing how hysteretic energy contributes to damage compared to the displacement demand. Experimental values of  $\beta_D$  are in the range between  $-0.3$  and  $1.2$  (e.g.,<sup>48</sup>). Table 1 summarises the classification of damage levels based on Park et al.,<sup>49</sup> for establishing a correspondence between the calculated values of  $D$  and the observed empirical damage.

Since the structure examined is subjected to biaxial loading, a biaxial damage index  $D$  is employed to define the bridge state. Rodrigues et al.<sup>50</sup> carried out an experimental campaign on 24 reinforced concrete (RC) columns tested under bi-dimensional earthquake conditions and presented seven expressions for the evaluation of  $D$ . The present study considers the following one:

$$D = \sqrt{D_x^2 + D_y^2} \quad (9)$$

where

$$D_x = \frac{d_{\max,x}}{d_{\text{ult},x}} + \beta_D \frac{E_x}{F_{\text{yield},x} \cdot d_{\text{ult},x}} \quad (10)$$

$$D_y = \frac{d_{\max,y}}{d_{\text{ult},y}} + \beta_D \frac{E_y}{F_{\text{yield},y} \cdot d_{\text{ult},y}} \quad (11)$$

In Equations (10) and (11),  $D_x$  and  $D_y$  refer to the damage indices calculated for each independent direction,  $E_x$  and  $E_y$  are the cumulative dissipated energy for each independent direction,  $d_{\max,x}$  and  $d_{\max,y}$  denote the maximum displacements,  $d_{\text{ult},x}$  and  $d_{\text{ult},y}$  represent the ultimate displacements and  $F_{\text{yield},x}$  and  $F_{\text{yield},y}$  denote the yielding strength in each direction. To exploit the information from sensors and the outcomes of VIs for updating the knowledge of the bridge damage, the joint probabilistic model must include both the *EDPs* of interest and the damage index.

## 2.4 | Aftershock damage assessment

The process describing the evolution of damage in a bridge under repeated events such as an *MS-AS* sequence is a state-dependent process, that is, the increment of damage that characterises a given shock depends on the history of damage accumulated during the previous shocks. Previous studies (e.g.,<sup>51</sup>) considered the Markovian assumption, that is, the damage evolution under a given ground motion, conditional to the features of the ground motion, depends only on the state of the structure at the time of the shock and not on all of its damage history. Ghosh et al.<sup>52</sup> demonstrated in their study that earthquake damage accumulation can be treated as a homogeneous Markov process. Introducing this assumption, the damage index at the end of the  $n$ th event or ground motion can be expressed as a function of the intensity of the event and of the damage at the end of the  $(n-1)$ th event or ground motion. Specifically, the multi-variate model developed by Ghosh et al.<sup>52</sup> is employed in this study, which has the following form:

$$\ln(D_n | IM_n, D_{n-1}) = c_n + d_n \ln(D_{n-1}) + e_n \ln(IM_n) + f_n \ln(D_{n-1}) * \ln(IM_n) + \varepsilon_n (\sim N(0, \beta_{AS})) \quad (12)$$

where  $IM_n$  is the ground motion intensity of the  $n$ th event,  $D_{n-1}$  is the damage index after the  $(n-1)$ th event;  $c_n$ ,  $d_n$ ,  $e_n$ , and  $f_n$  are regression coefficients, and  $\varepsilon_n (\sim N(0, \beta_{AS}))$  is a random variable normally distributed with zero mean and lognormal standard deviation  $\beta_{AS}$ . This model can be fitted to empirical data from analyses of the structure under a series of *MS-AS* sequences, where  $D_n = D_{MS}$  for  $n = 1$ . It is noteworthy that Equation (12) may return values of  $D_n$  lower than  $D_{n-1}$  due to the nature of the regression model and  $\varepsilon_n$ . One way to overcome this physical inconsistency (i.e., damage can only increase) is to postulate that  $D_n > D_{n-1}$ :

$$\ln(D_n | IM_n, D_{n-1}) = \max [c_n + d_n \ln(D_{n-1}) + e_n \ln(IM_n) + f_n \ln(D_{n-1}) * \ln(IM_n) + \varepsilon_n, D_{n-1}] \quad (13)$$

This choice is expected to provide more physics-based results than the model originally developed by Ghosh et al.<sup>52</sup> It is worth mentioning that under the assumption of a homogeneous Markov process, the coefficients of the model in Equations (12) and (13) are independent of  $n$ , that is, the probability of moving from a state of damage to another under a given ground motion does not depend on the number of ground motion in the sequence (e.g., the same model can be used for the second earthquake and the third earthquake in a sequence).

## 3 | BAYESIAN FRAMEWORK

This section presents the Bayesian framework developed for the assessment of the *AS* risk of a bridge and for its updating using observations from seismic stations, structural monitoring sensors and VIs.

### 3.1 | Bayesian network

This subsection illustrates the BN developed to describe the probabilistic relationship between the parameters specified in the previous section, perform predictive analysis and update these parameters based on additional information from different observations (see Figure 2). The magnitude of the point-source *MS* earthquake ( $M_{MS}$ ) and location between the source and the site as well as the source and the seismic stations (collected in  $\mathbf{R}_{MS}$ ) are assumed to be known. Various types of information are considered to be available for updating the probabilistic relationships of the variables in the network: on-site seismometers located close to the site of the structure, providing information on *IM* levels; GPS data, updating the knowledge of the *RD*; accelerometer data, updating the knowledge of the *PA* in the bridge deck; and the outcome of a VI, updating the knowledge of  $\varepsilon_{cc}$  and  $\varepsilon_{ct}$ . In the last case, the values of  $\varepsilon_{cc}$  and  $\varepsilon_{ct}$  are updated only if concrete cracking



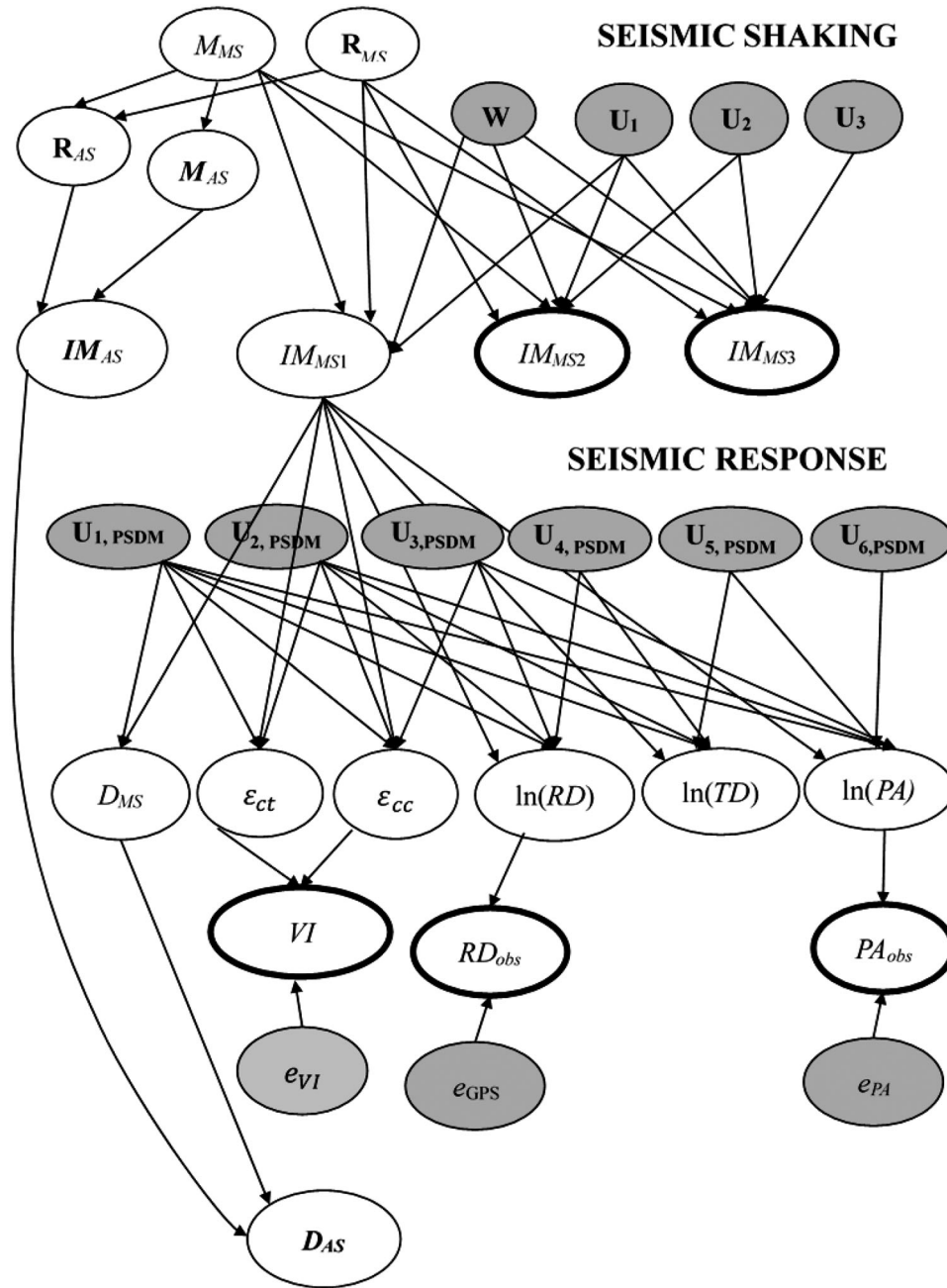


FIGURE 2 Bayesian network illustrating the relationships between the parameters involved in the damage assessment (observed quantities are indicated by thick lines, parent nodes filled with grey)

and/or crushing are observed, as this means that the deformations in the most critical fibre of the base section have likely exceeded the limit threshold corresponding to tensile cracking and/or crushing. Since the BN is static, it does not account for the temporal evolution of the system between the end of the *MS* and the occurrence of the *AS*s. Thus, information from sensors and VIs gained at different times after the occurrence of an earthquake can potentially be merged together.

The nodes of the BN represent random variables, each characterised by a PDF. Nodes are related to their parent and child variables through edges that state conditional dependencies between variables (i.e., use of conditional probability distributions). Nodes with no parents are termed root nodes, associated with marginal probability distributions. Two forms of probabilistic inference can be carried out in BNs: predictive analysis that is based on evidence (i.e., information that the node is in a particular state) on root nodes, and diagnostic analysis, also called Bayesian learning, where observations enter into the BN through the child nodes. When evidence enters the BN, it is spread inside the network, thereby updating the probability distributions of the variables through one of the two forms of inference mentioned above.

The earthquake-induced ground shaking for the  $MS$  event is modelled by the deterministic root nodes  $M_{MS}$  and  $\mathbf{R}_{MS}$ . For demonstration purposes, two seismic stations (represented by  $IM_{MS2}$  and  $IM_{MS3}$ ) are assumed to be in the vicinity of the bridge site (represented by  $IM_{MS1}$ ).

Following Gehl et al.,<sup>8</sup> the inter-event variability is modelled by the root node  $W$ , which is parent to the three  $IM$ s of interest and follows a standard normal distribution. The intra-event variability is modelled via three root nodes,  $U_j$ , for  $j = 1, 2, 3$ , also following a standard normal distribution. The following relation expresses the joint conditional distribution of the  $IM$ s given  $W$  and  $U_i$ :

$$\ln (IM_{MSi}|W, U_j) = \ln \overline{IM}_i(M_{MS}, R_{MSi}) + \sigma_\xi \sum_{j=1}^3 t_{ij} U_j + \sigma_\eta W \quad i = 1, 2, 3 \quad (14)$$

where  $\overline{IM}_{MSi}$  is the median value of the  $IM$  at the  $i$ th site, and  $\ln \overline{IM}_{MSi}(M_{MS}, R_{MSi})$  is the lognormal mean, which is a function of  $M_{MS}$  and  $R_{MSi}$  (see also Equation 1),  $\sigma_\xi$  and  $\sigma_\eta$  are the lognormal standard deviations describing the intra- and inter-event variability, respectively,  $t_{ij}$  is a term of the lower triangular matrix obtained through a Cholesky factorisation of  $\mathbf{C}_{IM}$ , which is the spatial correlation matrix expressing the correlation between the  $IM$ s at the various sites.

A similar approach is used for the PSDM describing the conditional distribution of the  $EDPs$  and damage index  $D_{MS}$  given the  $IM$  at the site,  $IM_{MS}$ . However, in this case, a bilinear regression model is employed, and thus two different error variables and correlation matrixes have to be considered, one for  $IM_{MS} < IM^*$  and the other for  $IM_{MS} > IM^*$ . In addition, three additional root nodes, denoted as  $e_{VD}$ ,  $e_{GPS}$  and  $e_{PA}$ , are introduced. They are used to describe the errors in the visual damage estimation and the measurement errors of the observations obtained with GPS and accelerometers. These error variables are assumed to be zero-mean normally distributed variables. They implicitly represent the accuracy and reliability of the observations from sensors and the VI: for example, if the standard deviation of  $e_{VD}$  is large, the information from VIs is not very reliable. Thus, its contribution in the BN updating will be almost negligible.

The  $IM$ s of the forecasted  $AS$  events, collected in  $\mathbf{IM}_{AS}$ , are computed by using the same GMM used for the  $MS$ , based on the knowledge of the distances between the  $AS$  source and the site, collected in the vector  $\mathbf{R}_{AS}$ , and the magnitude of the  $AS$  sequence  $M_{AS}$ . Finally, the model described in Equation (12) is employed to describe the relationship between the damage incurred from the  $MS$   $D_{MS}$  and the damage incurred from the  $AS$ s  $D_{AS}$ , given the  $IM$ s of the forecasted  $AS$  events collected in  $\mathbf{IM}_{AS}$ .

### 3.2 | Bayesian updating algorithm

The BN detailed in Figure 2 is used to perform a predictive analysis, starting from the prior distribution of the root nodes and a diagnostic analysis, entering an observation at the nodes  $IM_{MS2}$ ,  $IM_{MS3}$ ,  $RD_{obs}$  and  $PA_{obs}$  and visual observations (VI). For this purpose, the OpenBUGS software (e.g.,<sup>53</sup>) is employed, which is interfaced with the  $R$  statistical tool. OpenBUGS can treat both deterministic (e.g.,  $M_{MS}$  and  $\mathbf{R}_{MS}$ ) and probabilistic (e.g.,  $IM_{MSi}$ ,  $TD$ ) variables. These latter are sampled through a Markov Chain Monte Carlo (MCMC) sampling scheme. Each chain is built with a Gibbs sampling scheme, where variables are sampled successively from the posterior distribution of previous variables: the posterior distribution of a variable is obtained from the product of the prior distribution and the likelihood function (probability of a given observation occurring given the prior distribution). The samples are then aggregated to estimate empirical statistics of the variables of interest, representing the posterior distributions. Although Bayesian inference based on sampling provides only approximate solutions (i.e., the posterior distribution is built from the samples), it has the benefit of being much more flexible than exact inference algorithms such as junction-tree inference (e.g.,<sup>54</sup>), since it allows modelling continuous variables using various probability distributions. Due to the approximate nature of the posterior distributions sampled by the MCMC scheme, there is no guarantee that exact distribution parameters may be obtained. However, in the present study, the following steps are taken to ensure reasonable accuracy of the results:

- generation of multiple MCMC chains starting with different combinations of initial conditions to ensure that all chains converge towards the same values;
- generation of a high number of samples for each chain (e.g., several tens of thousands);

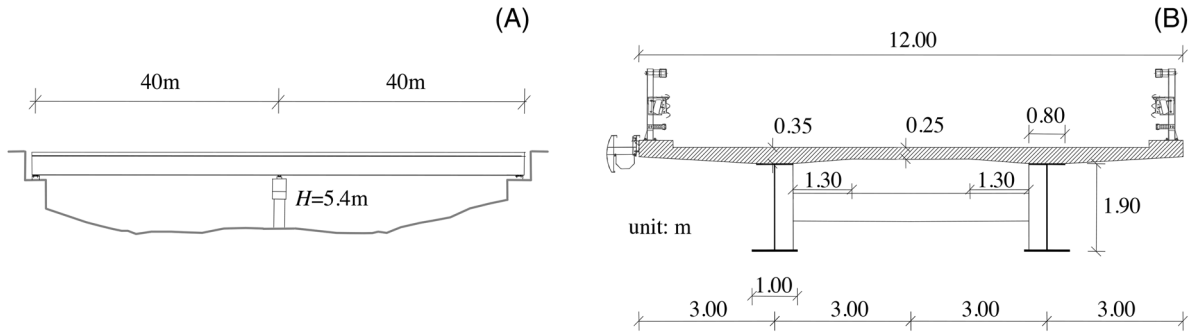


FIGURE 3 (A) Two-span bridge profile, (B) transverse deck section (source Tubaldi et al.<sup>59</sup>)

- definition of a ‘burn-in phase’, where the first part of each chain is removed from the estimation of the posterior distribution, to remove samples that have not yet converged;
- thinning of the samples (i.e., only one sample in every five is considered in each chain) to reduce autocorrelation effects inherent in MCMC sampling.

Specific statistical tools in OpenBUGS are dedicated to estimating autocorrelation and require a minimum number of samples. In any case, preliminary tests are necessary to calibrate the sampling parameters carefully. The chosen sampling results from a trade-off between the required accuracy level and the computational cost. In the present application, the relatively modest size of the BN does not imply unreasonable computational times, and the convergence towards an accurate posterior distribution is checked by estimating the ‘R-hat’ value (e.g.,<sup>55</sup>) and the effective sample size (e.g.,<sup>56</sup>) for all variables.

## 4 | CASE STUDY

### 4.1 | Case-study description

For demonstration purposes, the structural system considered in this study consists of a two-span bridge with a continuous multi-span steel-concrete composite deck, hypothetically located in L’Aquila, Italy (latitude 42.5650N, longitude 12.6438E). The selected bridge represents a class of regular medium-span bridges commonly used in transportation networks (e.g.,<sup>57–59</sup>) (see Figure 3). The bridge superstructure, designed according to the specifications given in Eurocode 4 (ECS),<sup>60</sup> consists of an RC slab of width  $B = 12$  m, which hosts two traffic lanes, and of two steel girders positioned symmetrically with respect to the deck centreline at a distance of 6 m. Class C35/45 concrete (i.e., characteristic compressive concrete strength of 35 MPa) is used for the superstructure slab. The reinforcement bars are made of grade B450C steel (characteristic yield strength of 450 MPa), and the deck girders are made of grade S355 steel (characteristic yield strength of 355 MPa). The distributed gravity load due to the deck’s self-weight and nonstructural elements is 138 kN/m for a mass per unit length  $m_d = 14.07$  kN/m. The RC piers have a circular cross-section of diameter  $d = 1.8$  m. They are made of class C30/37 concrete with a longitudinal reinforcement steel ratio of 1% and a transverse reinforcement volumetric ratio  $r_w = 0.5\%$ . Further details about the bridge can be found in Tubaldi et al.<sup>59</sup>

A three-dimensional finite element (FE) model of the bridge is developed in OpenSees (e.g.,<sup>61</sup>) following the same approach as described in Tubaldi et al.,<sup>62</sup> that is, using linear elastic beam elements for describing the deck, and the beam element with inelastic hinges developed by Scott et al.<sup>63</sup> to describe the pier. Further details of the FE model and the pier properties are given in Tubaldi et al.<sup>62</sup> The elastic damping properties of the system are characterised by a Rayleigh damping model, assigning a 2% damping ratio at the first two vibration modes. The FE model described in this study is assumed to be deterministic and characterised by no epistemic uncertainties. Future extensions of the methodology will consider the introduction of modelling uncertainty (such as considering the approach outlined in Tubaldi et al.<sup>64</sup> and their effects on the results).

Figure 4 shows the hysteretic response of the pier to a bi-directional ground-motion record, in terms of moment-curvature of the base and base shear-top displacement, along the two principal directions of the bridge. It can be observed that some degradation of stiffness and pinching characterise the model. This results from the constitutive model adopted

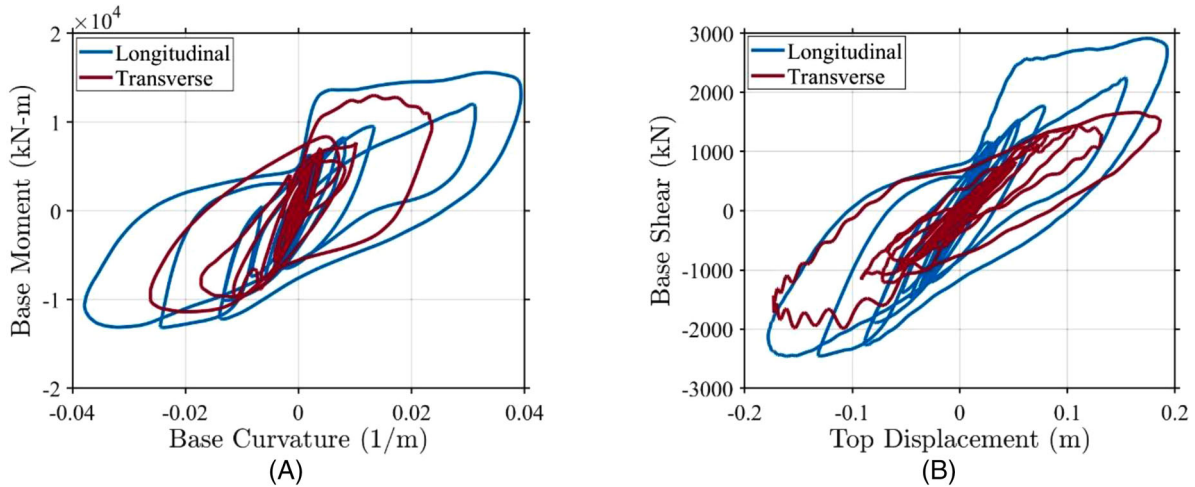


FIGURE 4 (A) Base moment-curvature response; and (B) base shear-top displacement response, along the two principal directions of the bridge

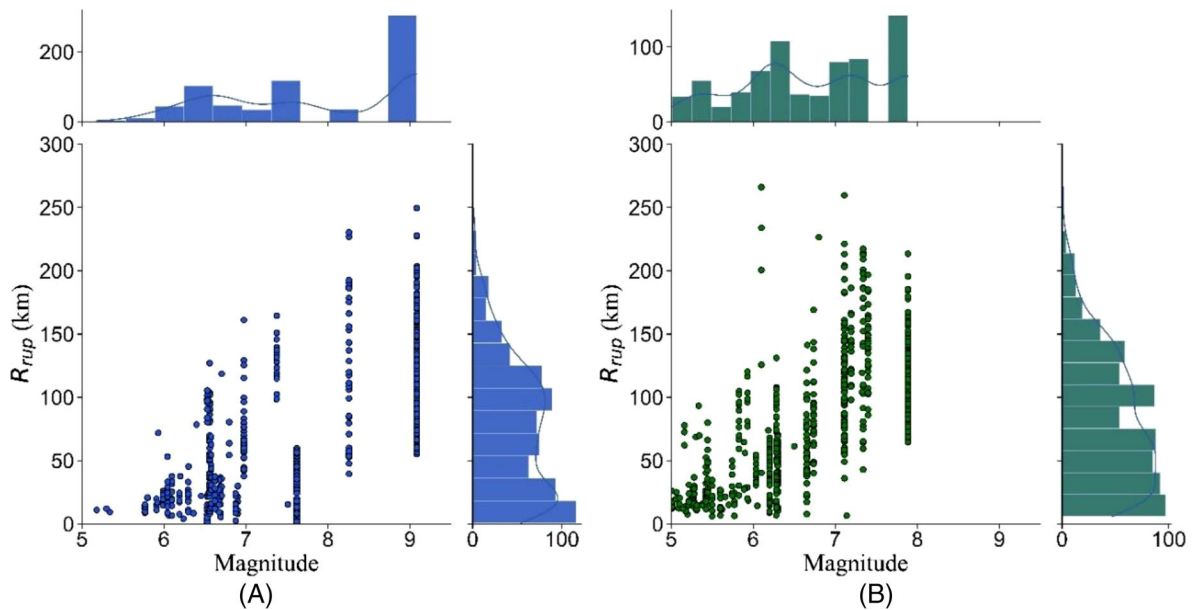


FIGURE 5 M- $R_{rup}$  distributions of: (A) MSs; and (B) ASs of the selected database (703 GMs)

to describe the concrete fibres in the plastic hinge region (*Concrete 02* in OpenSees; (e.g.,<sup>61</sup>)). However, a more sophisticated description of the hysteretic behaviour of the pier and other bridge components (see for instance<sup>65,66</sup>) is out of the scope of this study.

To develop the probabilistic seismic models that describe response and damage under the MS-AS sequences, 200 MS-AS recordings from the database developed by Goda and Taylor<sup>34</sup> and Goda et al.<sup>67</sup> are considered. The database contains 703 MS events and their corresponding strongest ASs (described in terms of peak ground acceleration and magnitude). The M- $R_{rup}$  distribution of the data used is provided in Figure 5, along with corresponding histograms. In addition, Appendix A provides further details on the selection process of the 200 MS-AS sequences employed in this study to build the probabilistic seismic response and damage models. The RotD50 pseudo-spectral acceleration at the fundamental period of the bridge (RotD50Sa) is the selected IM for both the MS and the ASs for simplicity. More advanced IM could be used (as done in the record selection, see Appendix A) but this is outside the scope of this paper. The GMM of Lanzano et al.<sup>68</sup> is used to estimate the ground motion IM values at the site from the considered earthquake point sources, assuming soft soil conditions ( $V_s = 300$  m/s) and a normal fault mechanism.

As described in Appendix A, the ground motion components are scaled such that their RotD50Sa matches the target spectral acceleration level. After the ground motion components are selected and scaled, the two ground motion components are randomly rotated and then applied to the two orthogonal directions of the bridge structure. This is done to avoid any assumptions regarding the incident angle of the ground motions with respect to the bridge structure (e.g.,<sup>69</sup>). The PSDM described in Subsection 2.3 is built using the 200 samples of the various response parameters of interest for the performance assessment obtained under the *MS* event. These are the *RD* ( $EDP_1 = RD$ ), the peak *TD* ( $EDP_2 = TD$ ), the *PA*s ( $EDP_3 = PA$ ), the maximum strain of concrete cover under compression ( $EDP_4 = \varepsilon_{cc}$ ), the maximum strain of concrete cover under tension ( $EDP_5 = \varepsilon_{ct}$ ) and the damage index  $D_{MS}$ . The value of the coefficient  $\beta_D$  considered in the calculation of the damage index is 0.8. A sensitivity analysis on the number of samples has been performed and while the analysis is not reported in the paper for brevity, the results have shown that the PSDM parameters and also the risk estimates shown in the later section do not change significantly by increasing the number of samples.

Figure 6 shows the sample values of these parameters versus  $IM_{MS}$  in the log-log plane. In the same figures, the median of the fitted PSDM is also plotted. For simplicity, the same value of  $IM^*$  is used for the various parameters of interest. The value of  $IM^* = 7.39 \text{ m/s}^2$  corresponds to a median value of the magnitude of the top displacement vector of 0.0106 m. According to Figure 4B, the pier is expected to experience significant inelastic deformations beyond this displacement level. This corresponds to a change of slope in the demand model. It can be observed that  $\varepsilon_{cc}$  and  $\varepsilon_{ct}$  increase almost linearly with the ground-motion intensity, and their trend of variation does not change significantly when  $IM_{MS}$  exceeds  $IM^*$ . The coefficient of determination  $R^2$ , for the various fittings, ranges from a minimum value of 0.59 for the  $D_{MS}$ , to a maximum of 0.72 for *PA*.

The results show that the highest correlations are observed between *TD* and  $D_{MS}$  (correlation coefficient of the order of 0.97 for both branches of the PSDM) and between  $\varepsilon_{cc}$  and  $\varepsilon_{ct}$  (correlation coefficients of the order of 0.99). On the other hand, the correlation between *TD* and *PA* is of the order of 0.7 for the first branch of the PSDM, and of 0.497 for the second branch of the PSDM. This suggests that the information on accelerations may be used to reduce uncertainty in estimating the bridge's peak *TD*s. It is noteworthy that this approach avoids the need to doubly integrate the measured acceleration signal when estimating displacements, which is characterised by several limitations (e.g.,<sup>70</sup>).

The model for damage accumulation corresponding to Equation (12) is fitted to the results of the time history analyses of the bridge model under the 200 *MS-AS* sequences. The fitted model describes the damage at the end of the first *AS* given the *MS* earthquake. Under the homogeneous Markov process assumption for the damage accumulation process, it can also describe the damage under any *AS* event of the sequence given the previously accumulated damage.

Figure 7 shows the samples of the damage index after the *AS*  $D_{AS}$  as a function of the *IM* of the *AS*  $IM_{AS}$  and the damage index at the end of the *MS*  $D_{MS}$ , and the surface corresponding to the fitted median model. The coefficient of determination of the model,  $R^2$ , is 0.697. These values reveal a relatively adequate model fit to the generated damage index data. To increase the accuracy of the results, a higher-order nonlinear model would be required. The regression coefficients for the models of Equations (7) and (12), the covariance matrices of the PSDM for the *MS* damage assessment and the corresponding correlation matrices can be found in Appendix B.

It is assumed that the bridge is equipped with one accelerometer mounted at the superstructure level above the pier. The measurement error of the accelerometer is characterised by a normal distribution with zero mean and a standard deviation of  $0.002 \text{ m/s}^2$ . This value is based on the noise root mean square (RMS) levels of exemplary low-cost sensor specifications extracted from representative datasheets ([e.g.,<sup>71</sup>] for a typical low-cost MEMS accelerometer). Other sources of information are not considered in this specific study.

## 4.2 | Rapid damage assessment for a single scenario

This subsection describes the results of the Bayesian updating of the *AS* risk for a single *MS* scenario, considering the information provided by an accelerometer mounted on the bridge deck above the pier and by a VI carried out at the end of the *MS*. It is assumed that seismic stations are not sufficiently close to the site to provide valuable information for hazard and risk updating. The use of information from stations close to the site is explored in the previous paper underpinning this one (e.g.,<sup>21</sup>). The seismic scenario corresponds to a seismic event originating from a point source with magnitude  $M_{MS}$  6.5, located 15 km from the site. These values are consistent with the modal values of the seismic hazard disaggregation for the region of interest.

The predictive analysis is first run based on the information at the root nodes. Subsequently, multiple independent diagnostic analyses are performed by entering a piece of evidence one at a time at the nodes  $PA_{\text{obs}}$  and by entering all the information at these nodes at the same time. These analyses are performed with OpenBugs (e.g.,<sup>53</sup>) using three MCMC

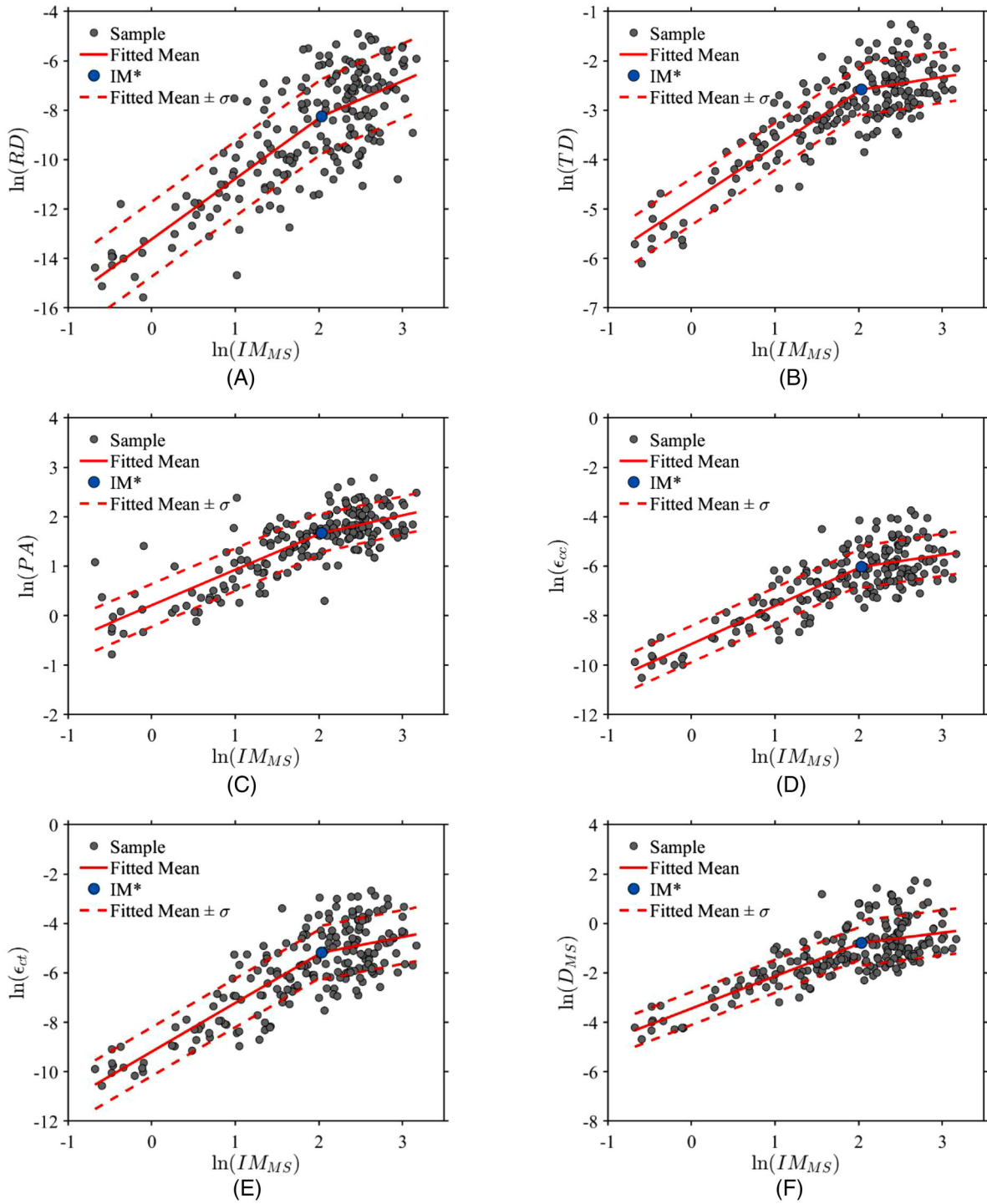


FIGURE 6 Sample values and model  $\epsilon$  results in terms of (A)  $RD$ ; (B)  $TD$ ; (C)  $PA$ ; (D)  $\epsilon_{cc}$ ; (E)  $\epsilon_{ct}$ ; and (F)  $D_{MS}$  versus  $IM_{MS}$  in the log–log plane

chains generated with different combinations of initial conditions. This is to ensure that the three different starting points converge towards similar posterior distributions. Each chain contains 10,000 samples obtained by starting from 60,000 iterations, discarding the first 10,000 (burn-in), and thinning to reduce autocorrelation. Ultimately, a total of 30,000 samples are used to estimate the posterior distributions. It is noteworthy that the computation time required to perform a single Bayesian inference analysis is low (in the order of a few seconds on a standard personal computer).

Figure 8 shows the empirical cumulative distribution function (ECDF) of the prior distribution of the damage at the end of the  $MS$  event  $D_{MS}$ , and the posterior distributions given the observations of the VI (Figure 8A) and of an accelerometer

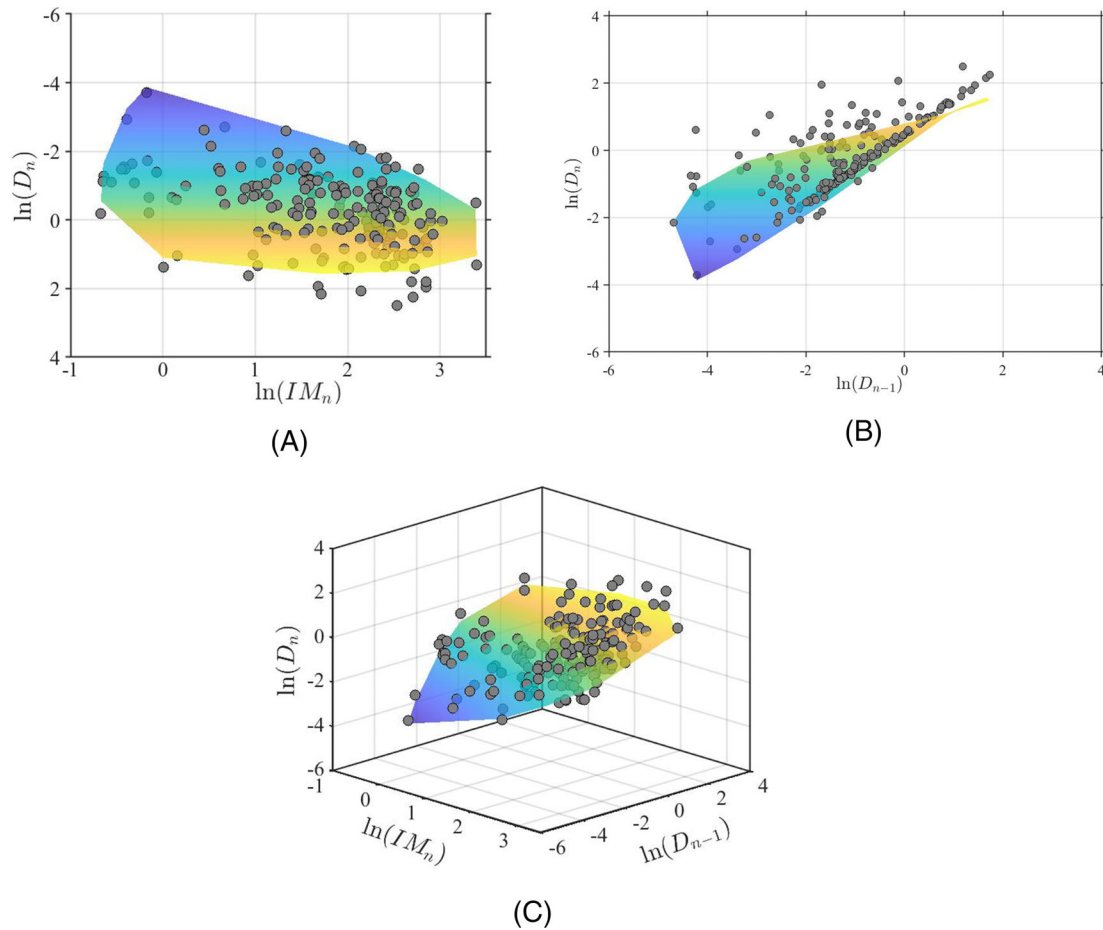


FIGURE 7 Multilinear regression model for describing the damage index after the AS as a function of the  $IM$  of the AS and the damage index after the MS. (A) 3D view, (B, C) side views

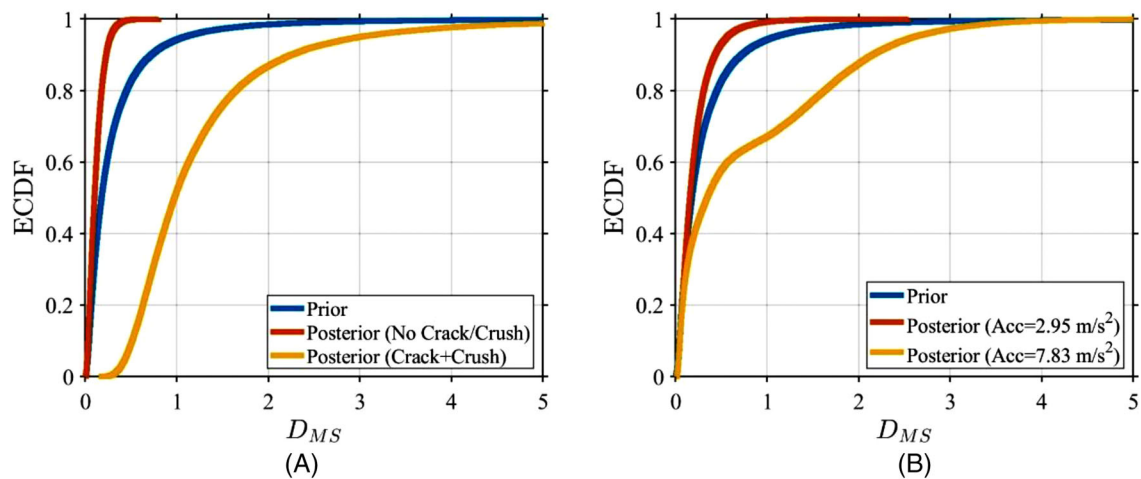


FIGURE 8 Empirical cumulative distribution function (ECDF) of the parameters of interest before and after updating with observations from visual inspection (A); and accelerometer measurements (B)

on the bridge deck (Figure 8B). In the analyses,  $\varepsilon_{cc}$  and  $\varepsilon_{ct}$  have been assumed as lognormal random variables with mean values respectively equal to 0.004 and 0.001, and a coefficient of variation of 0.3. The visual inspector has been assumed to be well trained, so that concrete crushing and cracking are always correctly detected if they occurred. First of all, it is observed that the expected value of the damage index at the end of the MS is low according to the prior estimate of damage. However, the outcomes of the VI can change this distribution significantly. Two different outcomes of the VI

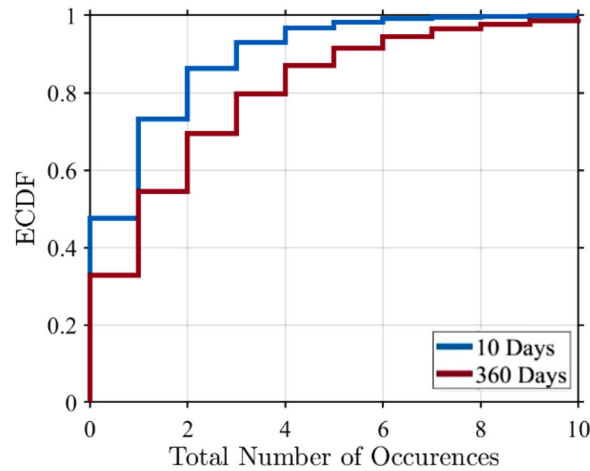


FIGURE 9 Empirical cumulative distribution of the total number of AS occurrences in a time frame of 10 and 360 days following the MS

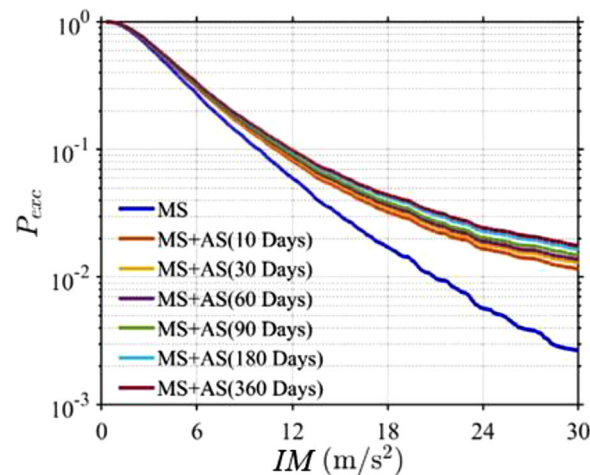


FIGURE 10 Probability of  $IM$  (RotD50Sa) exceedance under  $MS$  and  $MS$ - $AS$  sequence for different time windows

are considered. The first one corresponds to the observation of concrete cracking and crushing, while the second one observes no cracking or crushing. In the case of the second outcome, the ECDF shifts to the left (i.e., the damage is overall less than the prior estimate), whereas in the case of cracking and crushing, it shifts significantly towards the right (damage significantly higher than expected). Two different observations of the accelerometer placed at the deck level are considered for updating the damage. In the case of a low value of recorded acceleration ( $PA = 2.95 \text{ m/s}^2$ ), the expected value of damage reduces, whereas it increases for a very high value of the recorded acceleration ( $PA = 7.83 \text{ m/s}^2$ ), as expected.

A series of 10,000  $MS$ - $AS$  sequences is generated following the methodology outlined in Subsection 2.2. Each sequence is described by the seismic intensities of the  $AS$ s that occur within a time window of interest following the  $MS$ , collected in the vector  $\mathbf{IM}_{AS}$ .

Figure 9 shows the ECDF of the number of  $AS$  occurrences in an interval of 10 and 360 days following the  $MS$ . Obviously, the number of occurrences can assume only discrete values. It can be observed that the average number of occurrences of  $AS$ s of any intensity increases for increasing time. The average number of occurrences is about 1 in 10 days, and it increases to 2 in 360 days.

Figure 10 shows the probability of exceedance of the  $IM$  for the case of the  $MS$  event only and for the  $MS$ - $AS$  sequence within different time windows. It can be observed that the probability of exceedance increases significantly if  $AS$ s are considered, despite the magnitude of the  $AS$  being constrained to be less of that of the  $MS$ . This is because the  $AS$  could originate from a point source closer to the site than the source of the  $MS$ , but also due to the uncertainty inherent in the GMM regarding the ground motion attenuation from source to site. Obviously, increasing the time window



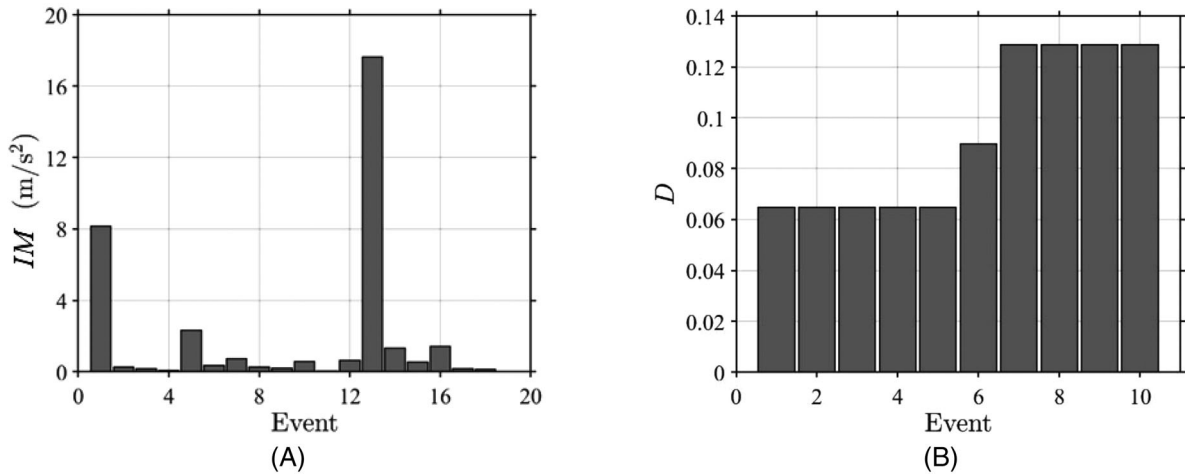


FIGURE 11 (A)  $IM$  values for various events of a  $MS$ - $AS$  sample sequence; (B) corresponding damage index values

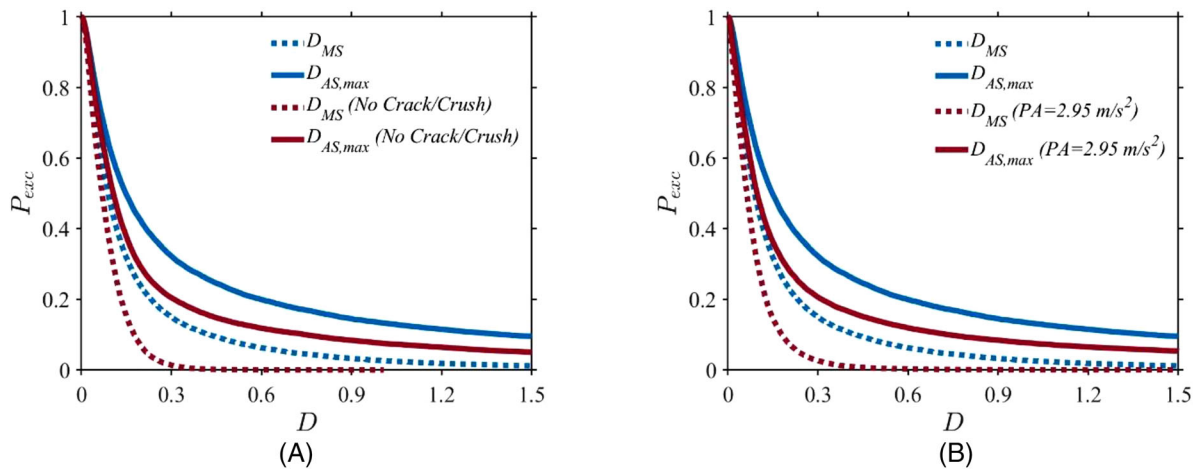


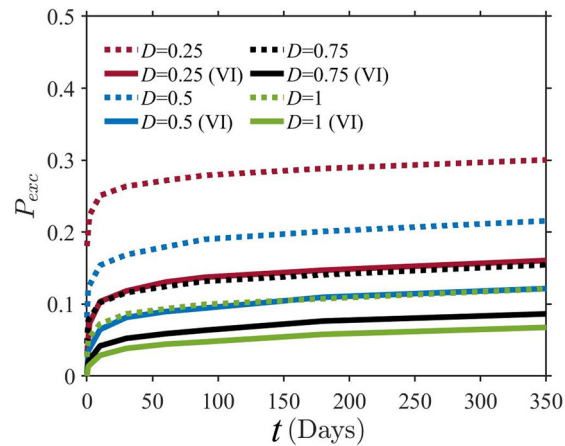
FIGURE 12 Probability of exceeding different levels of damage at the end of the  $MS$  and the end of the  $MS$ - $AS$  sequence, 10 days after the  $MS$ , considering prior  $D_{MS}$  estimates and posterior estimates following a visual inspection (A); and an accelerometer measurement (B)

of interest, the probability of exceedance also increases, but the highest relative increase is observed when only a few days after the  $MS$  are considered. This is because the rate of occurrence of the  $AS$  decreases with time since the  $MS$  occurrence.

For each of the 10,000 sample  $MS$ - $AS$  sequences, the evolution of the damage index is evaluated by using the model corresponding to Equation (13). The various samples of the  $MS$  damage index  $D_{MS}$  obtained by running the Bayesian network are considered as starting points for the various sequences. Obviously, different sample sets must be used, depending on whether the prior estimates or the posterior estimates of  $D_{MS}$  following an observation are considered. The  $IM_{AS}$  samples are then used together with Equation (13) to generate samples of the damage index vector  $D_{AS}$  collecting the damage index values at the end of each  $AS$ . The damage at the end of the  $MS$ - $AS$  sequence, denoted as  $D_{AS,max}$ , is then used for evaluating the  $AS$  risk.

Figure 11 shows the result of the application of the procedure to a sample sequence, considering a time window of 360 days. In particular, Figure 11A shows the values of the  $IM$  of the  $MS$  (event 1) and of the subsequent  $AS$ s (events 2–8). Figure 11B shows the corresponding values of the damage index at the end of the  $MS$  and the subsequent  $AS$ s. The damage increase is observed only in correspondence to events with significant intensity, as expected. The samples of  $D_{AS,max}$  obtained for the 10,000 considered sequences are used subsequently to estimate the probability of damage exceedance in the time window of interest.

Figure 12 shows the probability of exceeding different levels of damage at the end of the  $MS$  and the end of the  $MS$ - $AS$  sequence, 10 days after the  $MS$ . In Figure 12A, the risk related to prior  $D_{MS}$  estimates is compared with that related to



**FIGURE 13** Probability of exceedance of various levels of the damage index under *MS* and *MS-AS* sequence versus time elapsed since the *MS*, starting from the prior estimate of  $D_{MS}$  and posterior estimates of  $D_{MS}$  accounting for visual inspection with an observation of no cracking or crushing

posterior estimates that result from a VI in which no cracking or crushing was observed. In Figure 12B, the risk related to prior  $D_{MS}$  estimates is compared with that related to starting posterior estimates that result from a measurement of a low *PA* ( $2.95 \text{ m/s}^2$ ) at deck level during the *MS*. It can be observed that the increased risk of bridge damage obtained considering the *ASs* hazard is low, though not negligible. Moreover, accounting for the observations from VIs or accelerometers can change the damage risk estimates significantly. The decrease in damage risk due to the observation of no cracking or crushing is more significant than the increase in damage risk due to the consideration of *ASs*. It is noteworthy that the obtained results are not significantly affected by the number of samples used to fit the demand and damage models.

Figure 13 shows the time-dependent probability of exceeding various levels of the damage index under the *MS-AS* sequence, obtained starting from the prior estimate of  $D_{MS}$  or from the posterior estimate with no observed cracking/crushing. In general, the probability of exceedance increases for an increasing number of days elapsed after the *MS*. The rate of increase is higher a few days after the *MS* and then decreases due to two different effects: the time-decaying rate of *ASs* and the fact that the intensity of the *AS* is limited. A similar trend was observed in Jalayer et al.<sup>72</sup> It is also interesting to observe that the relative increase of risk for the *MS-AS* sequence compared to the *MS* is more significant if the posterior estimate of  $D_{MS}$  is considered as an initial condition. Starting from the prior estimate of  $D_{MS}$ , the probability of  $D_{AS,max}$  exceeding the value of 1, corresponding to significant damage, is equal to about  $2.67 \times 10^{-2}$  in the case of the *MS* event only, and it increases to  $1.22 \times 10^{-1}$  if the whole *MS-AS* sequence within a time window of 360 days is considered. On the other hand, starting from the posterior estimate of  $D_{MS}$ , the probability of exceeding the damage level of 1 increases from  $5.41 \times 10^{-6}$  at 0 days to  $6.82 \times 10^{-2}$  after 360 days. These results could be communicated to transport agencies or bridge managers and can help make better-informed decisions concerning bridge closure in the aftermath of an *MS*.

## 5 | CONCLUSIONS

This paper illustrated a Bayesian framework for the *AS* risk assessment of bridges. The main novelty aspect of the framework is that it allows to specifically exploit heterogeneous information from seismic stations, SHM sensors (accelerometers and GPS receivers) and VIs for updating knowledge of the damage state of the structure after the *MS* and thus make a more accurate assessment of the risk due to future *ASs*.

The proposed framework is applied to a hypothetical bridge in Central Italy subjected to a moderately strong *MS* scenario. A probabilistic model is fitted to describe the joint distribution of the various parameters related to the bridge state (damage index), the monitored responses (e.g., accelerations, *RDs*) and the VI outcomes (concrete cracking and crushing). The correlation between the involved variables is exploited to update the damage state given the sensor readings and the VI reports.

The study results show that observations of sensors and VIs can significantly affect the decision-making process concerning bridge closure in the aftermath of an *MS*. For example, a bridge for which prior knowledge of the *MS* magnitude

and source-to-site distance results in a high probability of large damage after an *MS* may be classified as safe following a VI that reports no cracking/crushing of bridge piers. This obviously has an impact on the risk due to future *ASs*. Similar results may be obtained by exploiting the information from accelerometers, if the recorded maximum absolute accelerations are low compared to the ones based on the only knowledge of the earthquake magnitude and location. It is noteworthy that the results obtained by applying the proposed framework to the case-study bridge can be strongly affected by the modelling choices. These include the description of the earthquake *AS* hazard, the structural model and the damage accumulation under multiple events, and the outcomes of the VIs given a possible damage state. Further improvements can be made by developing more sophisticated FE models and more consistent *MS-AS* ground motion selection approaches that better represent site-specific seismic hazard with a more comprehensive ground-motion database. The inclusion of more causal parameters in the analysis and more sources of information about the seismic response (e.g., information from drone-based surveys and damage detection) can also contribute to enhancing the proposed framework.

More research is needed to develop accurate models, for example, describing the relationship between amplitude and distribution of cracks and/or length of crushed concrete zone to the drifts and damage experienced by bridge piers. This will be the object of future investigations. In addition, a robust definition of the levels of damage that should trigger decisions concerning the bridge serviceability should also be the object of further study. Future works will also explore the effectiveness and benefit of alternative monitoring and inspection strategies in terms of better-informed decisions concerning bridge operability, using concepts such as expected utility theory, multi-criteria decision making and value of information.

## ACKNOWLEDGEMENTS

This paper is supported by the European Union's Horizon 2020 research and innovation programme under grant agreement No 821046, project TURNkey (Towards more Earthquake-resilient Urban Societies through a Multi-sensor-based Information System enabling Earthquake Forecasting, Early Warning and Rapid Response actions). Input and feedback from Gemma Cremen and Dr Elisa Zuccolo on the draft manuscript is greatly appreciated.

## DATA AVAILABILITY STATEMENT

The data that support the findings of this study are available from the corresponding author upon reasonable request.

## ORCID

Enrico Tubaldi  <https://orcid.org/0000-0001-8565-8917>

Francesca Turchetti  <https://orcid.org/0000-0001-5067-9128>

Ekin Ozer  <https://orcid.org/0000-0002-7177-0753>

Jawad Fayaz  <https://orcid.org/0000-0003-4706-9761>

Pierre Gehl  <https://orcid.org/0000-0002-1225-9621>

Carmine Galasso  <https://orcid.org/0000-0001-5445-4911>

## REFERENCES

- Iacoletti S, Cremen G, Galasso C. Advancements in multi-rupture time-dependent seismic hazard modeling, including fault interaction. *Earth Sci Rev.* 2021;220:103650.
- Erdik M, Şeşetyan K, Demircioğlu MB, Hancılar U, Zülfişkar C. Rapid earthquake loss assessment after damaging earthquakes. *Soil Dyn Earthq Eng.* 2011;31(2):247-266.
- Mackie KR, Stojadinović B. Post-earthquake functionality of highway overpass bridges. *Earthq Eng Struct Dyn.* 2006;35:77-93.
- Franchin P, Pinto PE. Allowing traffic over mainshock damaged bridges. *J Earthq Eng.* 2009;13(5):585-599.
- Aljawhari K, Gentile R, Freddi F, et al. Effects of ground-motion sequences on fragility and vulnerability of case-study reinforced concrete frames. *Bull Earthq Eng.* 2021;19:6329-6359.
- Gentile R, Galasso C. Hysteretic energy-based state-dependent fragility for ground-motion sequences. *Earthq Eng Struct Dyn.* 2021;50:1187-1203.
- Wald D, Lin KW, Porter K, Turner L. ShakeCast: automating and improving the use of ShakeMap for post-earthquake decision-making and response. *Earthq Spectra.* 2008;24(2):533-553.
- Gehl P, Douglas J, d'Ayala D. Inferring earthquake ground-motion fields with Bayesian networks inferring earthquake ground-motion fields with Bayesian networks. *Bull Seismol Soc Am.* 2017;107:2792-2808.
- Michellini A, Faenza L, Lauciani V, Malagnini L. ShakeMap implementation in Italy. *Seismol Res Lett.* 2008;79(5):688-697.
- Bragato PL. Assessing regional and site-dependent variability of ground motions for ShakeMap implementation in Italy. *Bull Seismol Soc Am.* 2009;99(5):2950-2960.
- Miano A, Jalayer F, De Risi R, et al. Model updating and seismic loss assessment for a portfolio of bridges. *Bull Earthq Eng.* 2016;14:699-719.

12. Celebi M, Sanli A, Sinclair M, Gallant S, Radulescu D. Real-time seismic monitoring needs of a building owner—and the solution: a cooperative effort. *Earthq Spectra*. 2004;20(2):333-346.
13. Limongelli MP, Omenzetter P, Yazgan U, Soyoz S. Quantifying the value of monitoring for post-earthquake emergency management of bridges. Paper presented at: *Proceedings of 39th IABSE Symposium—Engineering the Future*, Vancouver, BC, Canada, 21-23 September 2017.
14. Soyoz S, Feng MQ. Instantaneous damage detection of bridge structures and experimental verification. *Struct Control Health Monit*. 2008;15(7):958-973.
15. Im SB, Hurlbaeus S, Kang YJ. Summary review of GPS technology for structural health monitoring. *J Struct Eng*. 2013;139(10):1653-1664.
16. Porter KA. A survey of bridge practitioners to relate damage to closure. *Report No. EERL 2004-07*. Pasadena, CA: California Institute of Technology; 2004.
17. Spencer Jr BF, Ruiz-Sandoval ME, Kurata N. Smart sensing technology: opportunities and challenges. *Struct Control Health Monit*. 2004;11(4):349-368.
18. Ozer E, Feng D, Feng MQ. Hybrid motion sensing and experimental modal analysis using collocated smartphone camera and accelerometers. *Meas Sci Technol*. 2017;28(10):105903.
19. Alessandri S, Giannini R, Paolacci F. Aftershock risk assessment and the decision to open traffic on bridges. *Earthq Eng Struct Dyn*. 2013;42:2255-2275.
20. Giordano PF, Limongelli MP. The value of structural health monitoring in seismic emergency management of bridges. *Struct Infrastruct Eng*. 2020;18:537-553.
21. Tubaldi E, Ozer E, Douglas J, Gehl P. Examining the contribution of near real-time data for rapid seismic loss assessment of structures. *Struct Health Monit*. 2021;21:118-137.
22. Ebrahimian H, Jalayer F. Robust seismicity forecasting based on Bayesian parameter estimation for epidemiological spatio-temporal aftershock clustering models. *Sci Rep*. 2017;7(1):1-15.
23. Sebastiani G, Govoni A, Pizzino L. Aftershock patterns in recent central Apennines sequences. *J Geophys Res: Solid Earth*. 2019;124(4):3881-3897.
24. Douglas J, Edwards B. Recent and future developments in earthquake ground motion estimation. *Earth Sci Rev*. 2016;160:203-219.
25. Bommer JJ, Crowley H. The influence of ground-motion variability in earthquake loss modelling. *Bull Earthq Eng*. 2006;4(3):231-248.
26. Park J, Bazzurro P, Baker JW. Modeling spatial correlation of ground motion intensity measures for regional seismic hazard and portfolio loss estimation, Paper presented at: *Proceedings of the 10th International Conference on Applied Statistics and Probability*; 31 July–3 August, 2007; Tokyo, Japan.
27. Crowley H, Bommer JJ, Stafford PJ. Recent developments in the treatment of ground-motion variability in earthquake loss models. *J Earthq Eng*. 2008;12(2):71-80.
28. Jayaram N, Baker JW. Correlation model for spatially distributed ground-motion intensities. *Earthq Eng Struct Dyn*. 2009;38(15):1687-1708.
29. Reasenber PA, Jones LM. Earthquake hazard after a mainshock in California. *Science*. 1989;243:1173-1176; n. 4895.
30. Ogata Y. Space-time point-process models for earthquake occurrences. *Ann Inst Stat Math*. 1998;50:379-402.
31. Iacometti S, Cremen G, Galasso C. Validation of the epidemic-type aftershock sequence (ETAS) models for simulation-based seismic hazard assessments. *Seismol Res Lett*. 2022;93:1601-1618.
32. Turcotte DL, Holliday JR, Rundle JB. BASS, an alternative to ETAS. *Geophys Res Lett*. 2007;34:L12303.
33. Fayaz J, Xiang Y, Zareian F. Performance assessment of bridges under a sequence of seismic excitations. *Compdyn 2019*; June 24–26, 2019; Crete, Greece.
34. Goda K, Taylor CA. Effects of aftershocks on peak ductility demand due to strong ground motion records from shallow crustal earthquakes. *Earthq Eng Struct Dyn*. 2012;41:2311-2330.
35. Shcherbakov R, Turcotte D, Rundle J. Aftershock statistics. *Pure Appl Geophys*. 2005;162:1051-1076.
36. Båth M. Lateral inhomogeneities of the upper mantle. *Tectonophysics*. 1965;2:483-514.
37. Papadopoulos AN, Kohrangi M, Bazzurro P. Mainshock-consistent ground motion record selection for aftershock sequences. *Earthq Eng Struct Dyn*. 2020;49:754-771.
38. Le Cam L. Maximum Likelihood: An introduction. *International Statistical Review/Revue Internationale de Statistique*. 1990;58(2):153-171.
39. Lee H, Park HJ, Kim B. Differences between mainshock and aftershock ground motions derived from the Japanese KiK-net database. *Soil Dyn Earthq Eng*. 2020;138:106325.
40. Jalayer F, Ebrahimian H. Seismic risk assessment considering cumulative damage due to aftershocks. *Earthq Eng Struct Dyn*. 2016;46:369-389.
41. Zhang L, Goda K, De Luca F, De Risi R. Mainshock-aftershock state-dependent fragility curves: a case of wood-frame houses in British Columbia, Canada. *Earthq Eng Struct Dyn*. 2020;49:884-903.
42. Scozzese F, Tubaldi E, Dall'Asta A. Assessment of the effectiveness of Multiple-Stripe Analysis by using a stochastic earthquake input model. *Bull Earthq Eng*. 2020:1-37.
43. Vamvatsikos D, Cornell CA. Incremental dynamic analysis. *Earthq Eng Struct Dyn*. 2002;31(3):491-514.
44. Jalayer F. *Direct Probabilistic Seismic Analysis: Implementing Nonlinear Dynamic Assessments*. Stanford University; 2003.
45. Tubaldi E, Freddi F, Barbato M. Probabilistic seismic demand model for pounding risk assessment. *Earthq Eng Struct Dyn*. 2016;45(11):1743-1758.
46. Freddi F, Padgett JE, Dall'Asta A. Probabilistic seismic demand modeling of local level response parameters of an RC frame. *Bull Earthq Eng*. 2017;15(1):1-23.

47. Park Y, Ang AH-S. Mechanistic seismic damage model for reinforced concrete. *J Struct Eng*. 1985;111:722-739.
48. Cosenza E, Manfredi G, Ramasco R. The use of damage functionals in earthquake engineering: a comparison between different methods. *Earthq Eng Struct Dyn*. 1993;22:855-868.
49. Park Y-J, Ang AH-S, Wen YK. Seismic damage analysis of reinforced concrete buildings. *J Struct Eng*. 1985;111:740-757.
50. Rodrigues H, Arède A, Varum H, Costa A. Evaluation of damage in reinforced concrete columns under biaxial loading. Paper presented at: COMPDYN 2013; June 12–14, 2013; Kos Island, Greece.
51. Iervolino I, Giorgio M, Chioccarelli E. Markovian modeling of seismic damage accumulation. *Earthq Eng Struct Dyn*. 2016;45:441-461.
52. Ghosh J, Padgett JE, Silva M. Seismic damage accumulation in highway bridges in earthquake-prone regions. *Earthq Spectra*. 2015;31(1):115-135.
53. Lunn D, Spiegelhalter D, Thomas A, Best N. The BUGS project: evolution, critique and future directions (with discussion). *Stat Med*. 2009;28:3049-3067.
54. Huang C, Darwiche A. Inference in belief networks: a procedural guide. *Int J Approx Reason*. 1996;15(3):225-263.
55. Gelman A, Rubin DB. Inference from iterative simulation using multiple sequences. *Stat Sci*. 1992;7(4):457-472.
56. Geyer CJ. Introduction to markov chain monte carlo. In: *Handbook of Markov Chain Monte Carlo*. Hall/CRC; 2011.
57. Gray RM. *Entropy and Information Theory*. Springer Science & Business Media; 2011.
58. Dezi L. Architectural and structural design of short and medium span composite bridges. Paper presented at: Proceedings of 7th International Conference on Steel Bridges; 2008; Guimaraes, Portugal.
59. Tubaldi E, Dall'Asta A, Dezi L. Reduced formulation for post-elastic seismic response of dual load path bridges. *Eng Struct*. 2013;51:178-187.
60. European Committee for Standardization (ECS). *Eurocode 4. Design of composite steel and concrete structures. Part 2: composite bridges. ENV 1994-2*. Brussels, 2000.
61. McKenna F, Fenves GL, Scott MH. *OpenSees: Open System for Earthquake Engineering Simulation*. Pacific Earthquake Engineering Center, University of California; 2006.
62. Tubaldi E, Barbato M, Dall'Asta A. Transverse seismic response of continuous steel-concrete composite bridges exhibiting dual load path. *Earthq Struct*. 2010;1(1):21-41.
63. Scott MH, Fenves GL. Plastic hinge integration methods for force-based beam-column elements. *J Struct Eng-ASCE*. 2006;132(2):244-252.
64. Tubaldi E, Barbato M, Dall'Asta A. Influence of model parameter uncertainty on seismic transverse response and vulnerability of steel-concrete composite bridges with dual load path. *J Struct Eng*. 2012;138(3):363-374.
65. Kashani MM, Lowes LN, Crewe AJ, Alexander NA. Nonlinear fibre element modelling of RC bridge piers considering inelastic buckling of reinforcement. *Eng Struct*. 2016;116:163-177.
66. Fayaz J, Riquelme M, Zareian F. Sensitivity of the response of box-girder seat-type bridges to the duration of ground motions arising from crustal and subduction earthquakes. *Eng Struct*. 2020;219:110845.
67. Goda K, Wenzel F, De Risi R. Empirical assessment of nonlinear seismic demand of mainshock–aftershock ground-motion sequences for Japanese earthquakes. *Frontiers Built Environment*. 2015;1.
68. Lanzano G, Luzi L, Pacor F, et al. A revised ground-motion prediction model for shallow crustal earthquakes in Italy. *Bull Seismol Soc Am*. 2019;109(2):525-540.
69. Fayaz J, Dabaghi M, Zareian F. Utilisation of site-based simulated ground motions for hazard-targeted seismic demand estimation: application for ordinary bridges in southern California. *J Bridge Eng*. 2020;25(11):04020097.
70. Trapani D, Maroni A, Debiasi E, Zonta D. Uncertainty evaluation of after-earthquake damage detection strategy. *2015 IEEE Workshop on Environmental, Energy, and Structural Monitoring Systems (EESMS) Proceedings*; 2015; 125-130. Trento, Italy.
71. ST Microelectronics. LIS331DL. <https://www.st.com/en/mems-and-sensors/lis331dlh.html> (Accessed: 10 September 2021)
72. Jalayer F, Asprone D, Prota A, Manfredi G. A decision support system for post-earthquake reliability assessment of structures subjected to aftershocks: an application to L'Aquila earthquake, 2009. *Bull Earthq Eng*. 2010;9(4):997-1014.
73. Boore DM. Orientation-independent, nongeometric-mean measures of seismic intensity from two horizontal components of motion. *Bull Seismol Soc Am*. 2010;100:1830-1835.
74. Fayaz J, Razaeeian S, Zareian F. Evaluation of simulated ground motions using probabilistic seismic demand analysis: cyberShake (ver 15.12) simulations for Ordinary Standard Bridges. *Soil Dyn Earthq Eng*. 2021;141:106533.
75. Shokrabadi M. Stochastic Characterization of Aftershock Building Seismic Performance. *PhD Thesis/Dissertation*. 2018, University of California, Los Angeles.

**How to cite this article:** Tubaldi E, Turchetti F, Ozer E, Fayaz J, Gehl P, Galasso C. A Bayesian network-based probabilistic framework for updating aftershock risk of bridges. *Earthquake Engng Struct Dyn*. 2022;51:2496–2519. <https://doi.org/10.1002/eqe.3698>

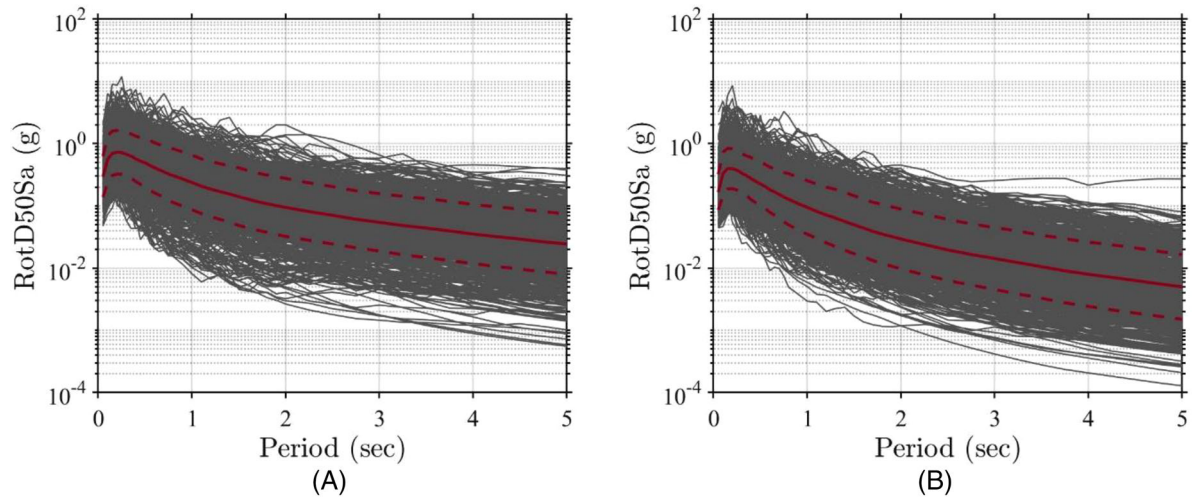


FIGURE A1 RotD50Sa spectra (2% damped) of: (A) *MSs* and (B) *ASs* of the selection database (703 GMs)

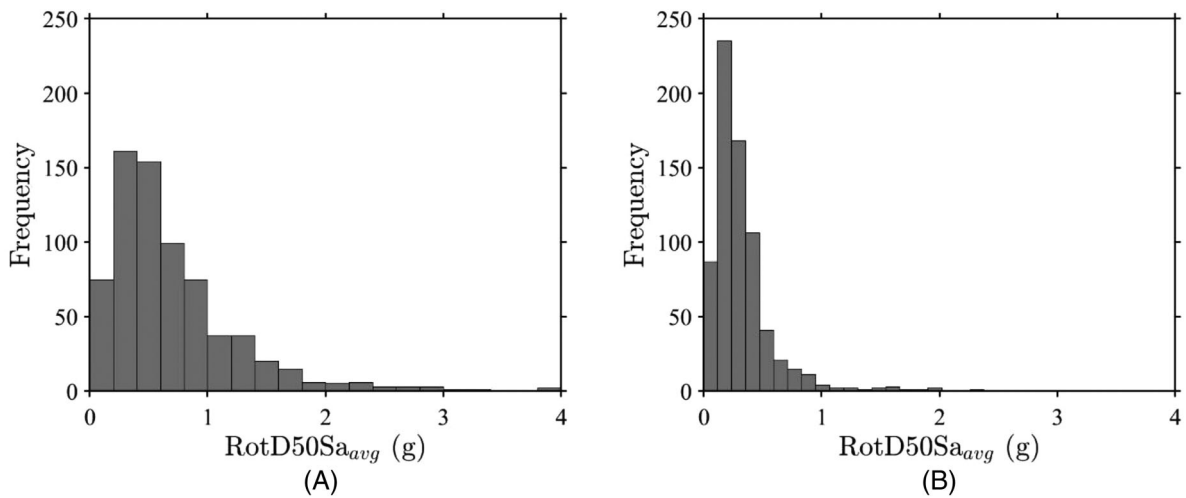


FIGURE A2 Average RotD50Sa (RotD50Sa,avg) of: (A) *MSs* and (B) *ASs* of the selection database (703 GMs)

## APPENDIX A

The 703 mainshocks (*MS*) – aftershock (*AS*) ground-motion (*GM*) sequences selected from the database provided by Goda et al.<sup>34</sup> and Goda et al.<sup>67</sup> are used to compute their RotD50Sa spectra (e.g.,<sup>73</sup>) for 2% damped oscillator at 40 periods. The 703 *MSs* and *AS* spectra are presented in Figure A1. To select the ground motions appropriately while considering higher mode effects and period elongation effects, average RotD50Sa (denoted as RotD50Sa,avg) is utilised as the selected ground-motion intensity measure. RotD50Sa,avg is computed as the mean of RotD50Sa between 0.5  $T_1$  and 2  $T_1$  (e.g.,<sup>74</sup>) where  $T_1 = 0.432$  s. The histograms of the RotD50Sa,avg computed for the database, are presented in Figure A2.

Firstly, *MS* *GMs* are chosen such that 10 *GMs* are selected for 20 levels of RotD50Sa,avg ranging from 0.1 to 2.0 g at an interval of 0.1 g with the requirement of no scaling. This leads to a total of 200 *MS* unscaled *GMs*. Figure A3A shows the histogram of RotD50Sa,avg of the selected *MS* unscaled *GMs*. It can be observed from the histogram, ~10 *GMs* are selected for each level of the 20 RotD50Sa,avg with slightly lesser number of *GMs* available for higher RotD50Sa,avg (i.e., RotD50Sa,avg > 1.6 g). This due to the lack of recorded *GM* options for higher intensity levels. Finally, the 200 unscaled *GMs* are scaled such that 10 *GMs* exactly match each level of the RotD50Sa,avg to have precisely 10 *GMs* for each of the 20 RotD50Sa,avg levels. The histogram of the scaling factors is shown in Figure A3B, and it can be observed that they range very close to 1, thereby signifying lower scaling levels.

The natural unscaled *AS* *GMs* corresponding to the 200 unscaled *MS* *GMs* selected above are selected for the *AS* sequence to maintain *MS*–*AS* *IM* correlations. This leads to 200 unscaled *AS* *GMs* whose RotD50Sa,avg is presented in Figure A4A. Figure A5A further shows the RotD50Sa,avg of the 200 unscaled *MS* *GMs*, versus the RotD50Sa,avg of

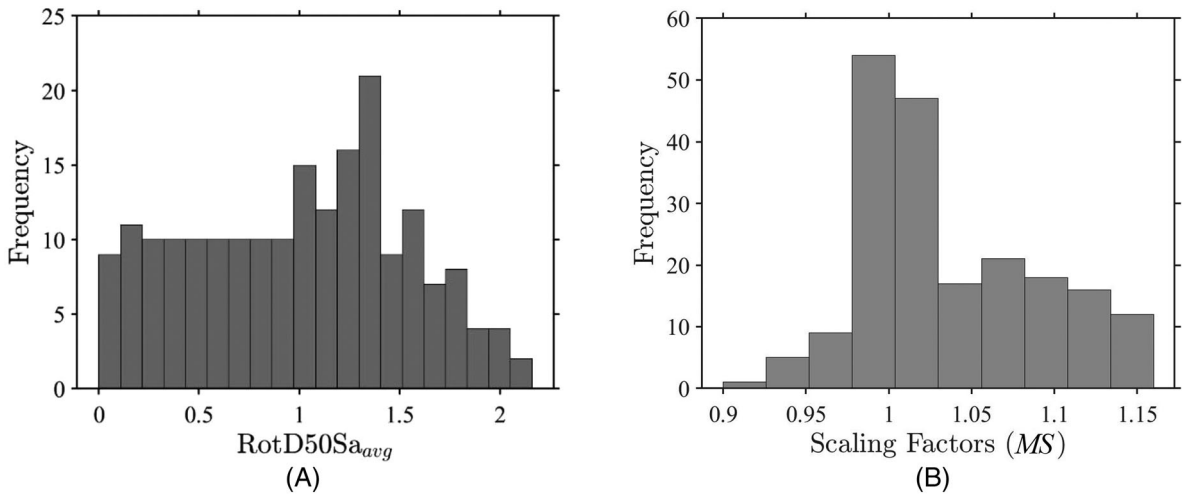


FIGURE A3 Selected MS GMs: (A) unscaled  $RotD50S_{a_{avg}}$  and (B) scaling factors

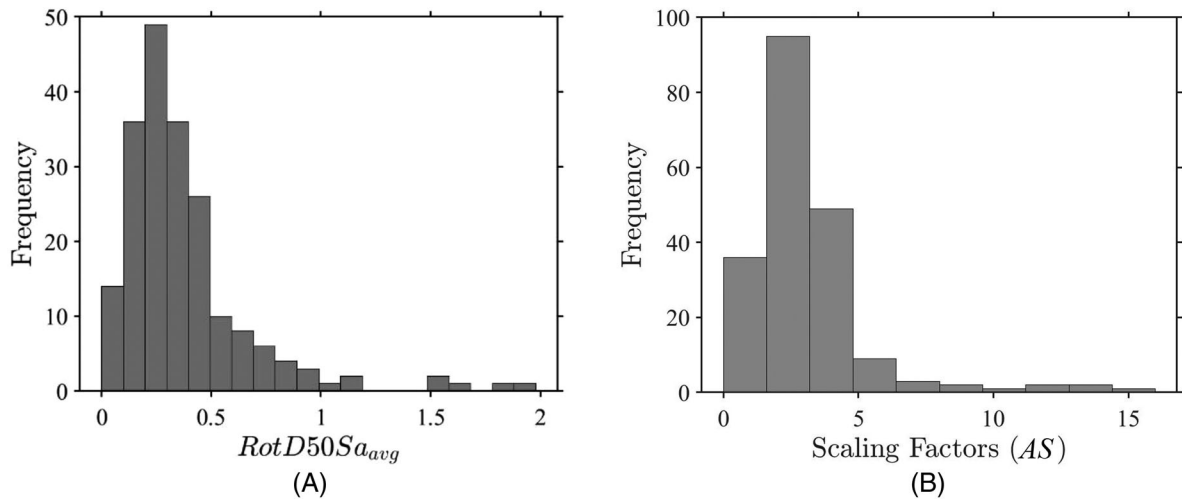


FIGURE A4 Selected AS GMs: (A) unscaled  $RotD50S_{a_{avg}}$  and (B) scaling factors

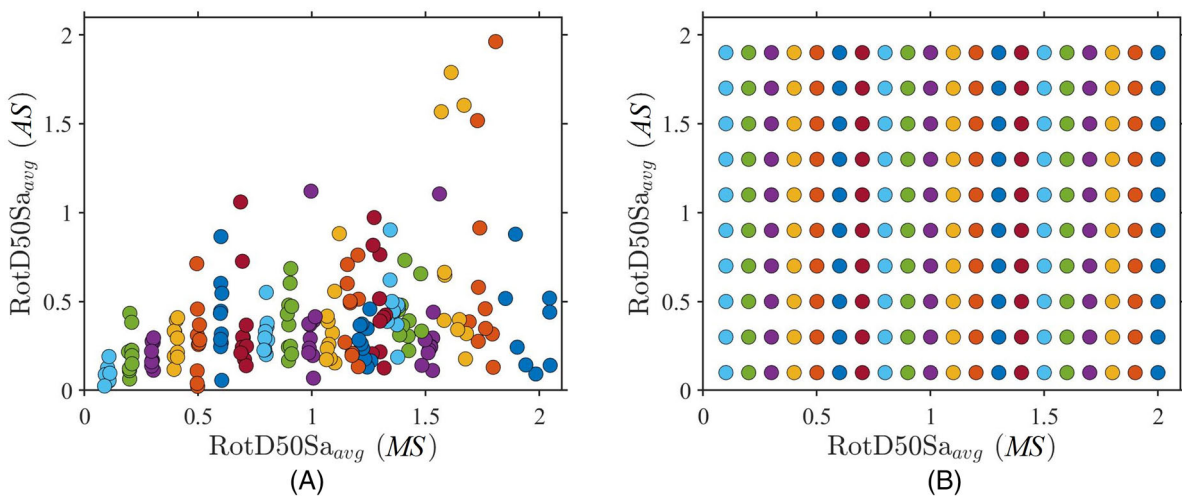


FIGURE A5  $RotD50S_{a_{avg}}$  of the selected MS versus AS GMs: (A) unscaled MS-AS GMs and (B) scaled

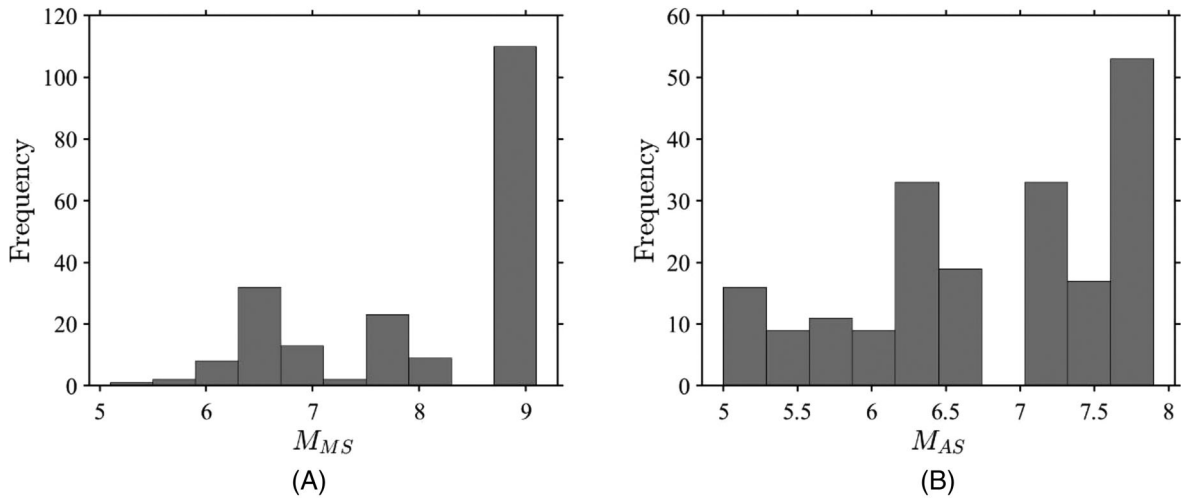


FIGURE A6 Magnitudes of the selected GMs: (A) MSs and (b) ASs

TABLE B1 Coefficients of the bilinear regression model of Equation (7) for the various EDPs of interest

Coefficient	RD	TD	PA	$\epsilon_{cc}$	$\epsilon_{ct}$	$D_{MS}$
$a_1$	-13.220	-4.850	-0.208	-9.142	-9.192	-3.442
$b_1$	2.445	1.11	0.720	1.532	1.974	1.306
$b_2$	1.480	0.260	0.369	0.499	0.653	0.427

the corresponding natural 200 unscaled AS GMs. It can be observed that for lower levels of *MS* RotD50Sa,avg levels, the RotD50Sa,avg levels of AS GMs tend to be very small, and the scatter plot tends to be very sparse for high AS RotD50Sa,avg levels. To remedy this, the selected unscaled AS GMs are scaled (with minimal scaling) such that for each *MS* RotD50Sa,avg level (i.e., 20 levels ranging from 0.1 to 2.0 g at an interval of 0.1 g), the corresponding ten unscaled AS GMs lead to ten levels of RotD50Sa,avg ranging from 0.1 to 1.9 g at an interval of 0.2 g. The histogram of the utilised scaling factors is shown in Figure A4B, and the RotD50Sa,avg of the selected scaled *MS* and AS GMs is shown in Figure A5B. To ensure that minimal scaling is used for the AS GMs, for each level of *MS* RotD50Sa,avg, the corresponding ten unscaled AS GMs are scaled such that each one requires minimal scaling to achieve RotD50Sa,avg between 0.1 and 1.9 g. This process leads to *MS*-*AS* sequences with RotD50Sa,avg shown in Figure A5B.

#### MS-AS GMs

Furthermore, the magnitudes of the *MS* and *AS* remained consistent with the statistical knowledge obtained from the history of recordings where the selected *MS*-*AS* led to mean *MS* magnitude = 8.15 and mean *AS* magnitude = 6.80. This is consistent with the literature available that mentions that the magnitude of *AS* is on average 1–1.2 points lower than the magnitude of *MS* event (e.g.,<sup>75</sup>). The magnitudes of the *MS* and *AS* events of selected ground motions are shown in Figure A6A and B, respectively. To further introduce randomness in the ground motions, the ‘as recorded’ components of the 200 *MS* and *AS* ground motions were rotated at random angles. However, it was made sure that both *MS* and *AS* GMs of the sequence were rotated to the same random angle in order to maintain the internal correlations.

## APPENDIX B

The regression coefficients for the average model of Equation (7) are listed in Table B1.

The covariance matrices  $\sum^I$  and  $\sum^{II}$ , collecting the information on the variance of the error variables (in the lognormal space) and their correlation, for the two branches of the PSDM for the *MS* damage assessment (corresponding respectively



**TABLE B2** Coefficients of the multilinear regression model of Equation (12)

Coefficient	Value
$c_n$	0.233
$d_n$	0.935
$e_n$	0.166
$f_n$	-0.173

to  $M_{MS} \leq IM^*$  and  $IM_{MS} > IM^*$ ), are:

$$\sum^I = \begin{bmatrix} 2.264 & 0.518 & 0.021 & 0.879 & 1.180 & 0.625 \\ 0.518 & 0.221 & 0.016 & 0.315 & 0.409 & 0.277 \\ 0.021 & 0.0164 & 0.183 & 0.033 & 0.0603 & 0.041 \\ 0.879 & 0.315 & 0.033 & 0.537 & 0.707 & 0.436 \\ 1.180 & 0.409 & 0.060 & 0.707 & 0.961 & 0.564 \\ 0.563 & 0.277 & 0.040 & 0.436 & 0.564 & 0.440 \end{bmatrix}$$

$$\sum^{II} = \begin{bmatrix} 2.56 & 0.599 & 0.193 & 1.040 & 1.366 & 0.980 \\ 0.599 & 0.267 & 0.090 & 0.414 & 0.525 & 0.447 \\ 0.193 & 0.090 & 0.146 & 0.129 & 0.165 & 0.123 \\ 1.040 & 0.414 & 0.129 & 0.713 & 0.895 & 0.730 \\ 1.366 & 0.525 & 0.165 & 0.895 & 1.172 & 0.925 \\ 0.980 & 0.447 & 0.123 & 0.730 & 0.925 & 0.823 \end{bmatrix} \quad (A.1)$$

and the corresponding correlation matrices are:

$$C^I = \begin{bmatrix} 1 & 0.733 & 0.0324 & 0.798 & 0.800 & 0.627 \\ 0.733 & 1 & 0.0815 & 0.914 & 0.887 & 0.890 \\ 0.0324 & 0.081 & 1 & 0.105 & 0.144 & 0.143 \\ 0.798 & 0.914 & 0.105 & 1 & 0.984 & 0.899 \\ 0.799 & 0.887 & 0.144 & 0.984 & 1 & 0.869 \\ 0.627 & 0.890 & 0.143 & 0.899 & 0.869 & 1 \end{bmatrix} \quad (A.2)$$

$$C^{II} = \begin{bmatrix} 1 & 0.772 & 0.338 & 0.828 & 0.841 & 0.719 \\ 0.772 & 1 & 0.455 & 0.949 & 0.940 & 0.952 \\ 0.338 & 0.455 & 1 & 0.401 & 0.398 & 0.354 \\ 0.822 & 0.950 & 0.401 & 1 & 0.978 & 0.953 \\ 0.841 & 0.938 & 0.398 & 0.978 & 1 & 0.942 \\ 0.72 & 0.952 & 0.354 & 0.952 & 0.942 & 1 \end{bmatrix}$$

Table B2 presents the regression coefficients for the average model of Equation (12). The estimate of the standard deviation of  $\varepsilon_n$  is 0.603.