



**HAL**  
open science

## French metropolitan mining potential reappraisal of selected critical metals.

Isabelle Duhamel-Achin, Blandine Gourcerol, Maxime Picault

► **To cite this version:**

Isabelle Duhamel-Achin, Blandine Gourcerol, Maxime Picault. French metropolitan mining potential reappraisal of selected critical metals.. Recent evolution in the research of mineral resources, EAGE Local Chapter Paris, Jun 2021, Paris, France. hal-03698705

**HAL Id: hal-03698705**

**<https://brgm.hal.science/hal-03698705>**

Submitted on 18 Jun 2022

**HAL** is a multi-disciplinary open access archive for the deposit and dissemination of scientific research documents, whether they are published or not. The documents may come from teaching and research institutions in France or abroad, or from public or private research centers.

L'archive ouverte pluridisciplinaire **HAL**, est destinée au dépôt et à la diffusion de documents scientifiques de niveau recherche, publiés ou non, émanant des établissements d'enseignement et de recherche français ou étrangers, des laboratoires publics ou privés.

# FRENCH METROPOLITAN MINING POTENTIAL REAPPRAISAL OF SELECTED CRITICAL METALS

Isabelle Duhamel-Achin [i.duhamelachin@brgm.fr](mailto:i.duhamelachin@brgm.fr)  
Blandine Gourcerol [b.gourcerol@brgm.fr](mailto:b.gourcerol@brgm.fr)  
Maxime Picault [m.picault@brgm.fr](mailto:m.picault@brgm.fr)

LOCAL CHAPTER  
**EAGE**  
PARIS

EAGE Local Chapter PARIS - June 22<sup>nd</sup> 2021



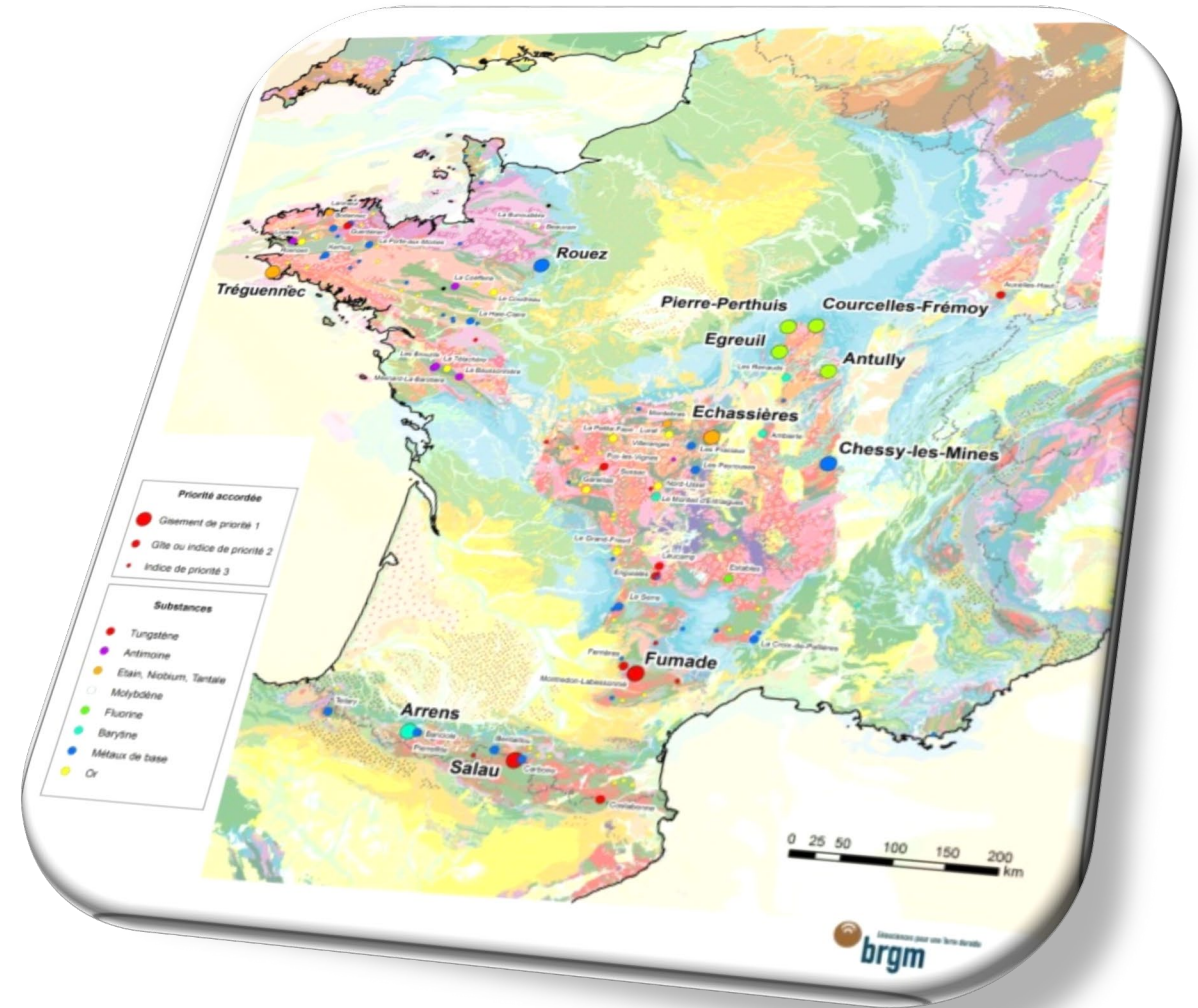
# Outline

Historical exploration program conducted by BRGM and the first inventory of mineral resources in France

Criticality assessment of raw materials for France

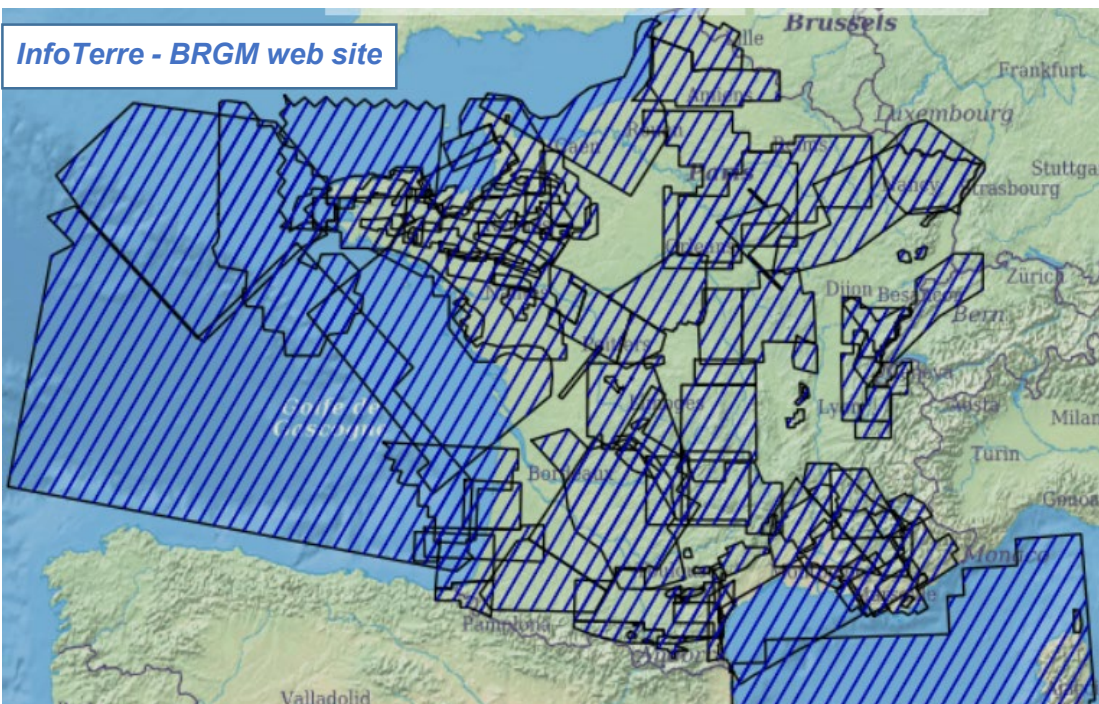
Potential for selected critical metals in metropolitan France

- Tungsten
- Antimony
- Tin
- Lithium

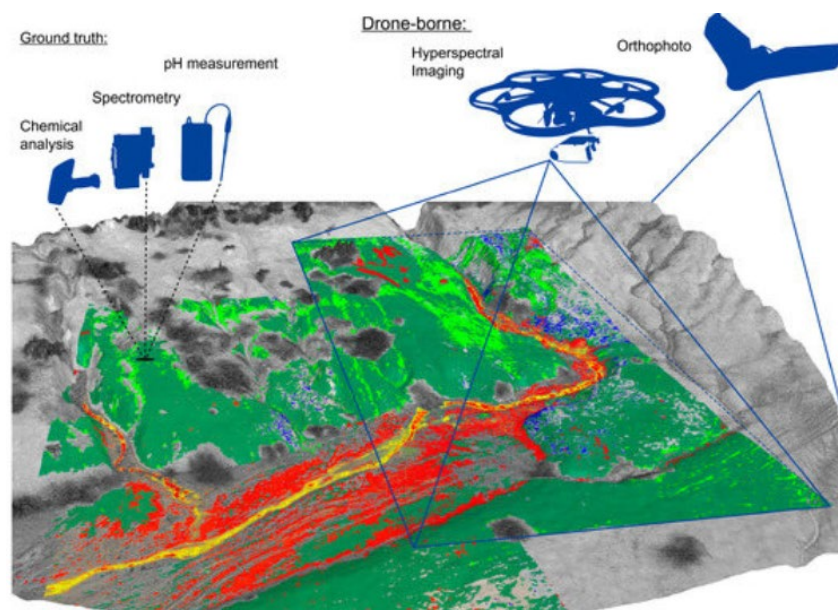


# Geophysical aerial survey of France

- Geophysical airborne surveys dedicated to mining prospection are outdated (conducted from the end of 60's to 80's)
- >1990's surveys were dedicated to natural risks diagnosis, deep water research or prospection of construction material

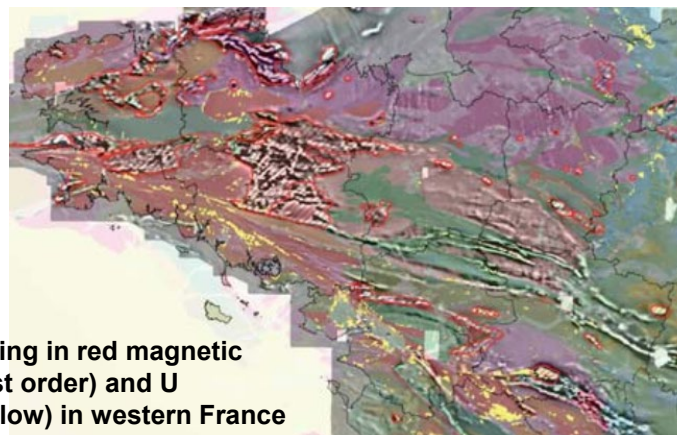


Surface covered by historical MAG airborne geophysical surveys over metropolitan France

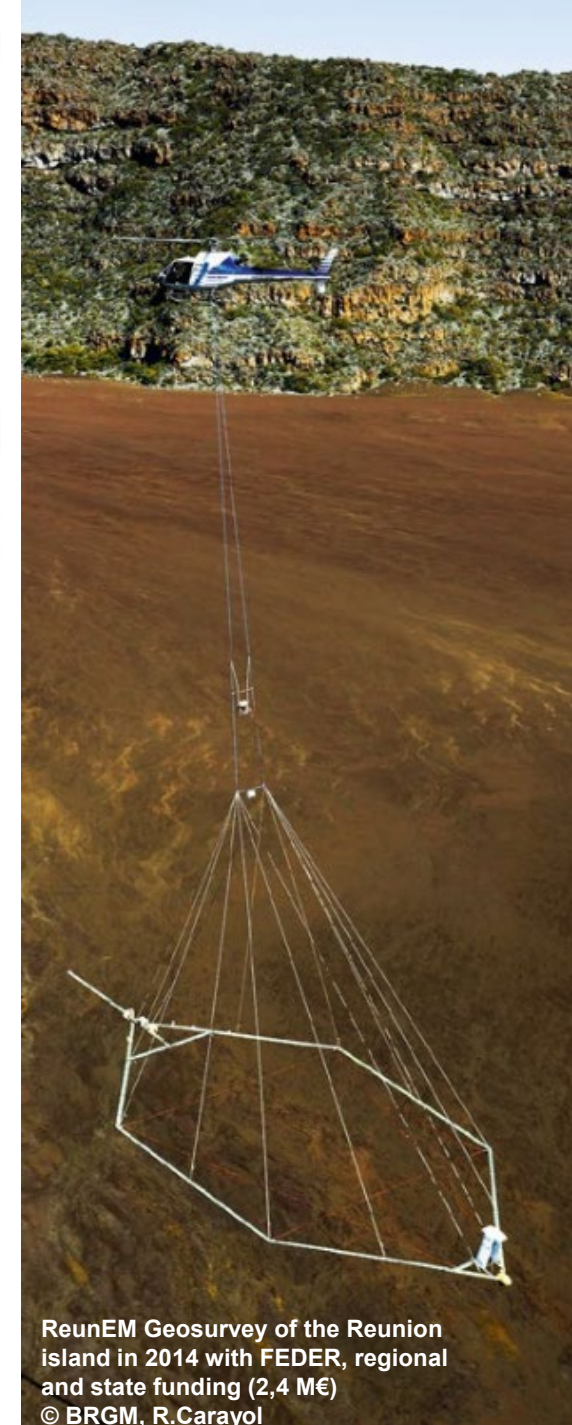


Source : Jackisch et al. (2018)  
<https://doi.org/10.3390/rs10030385>

- More recent methods with higher resolution exist to explore and refine underground mining potential
- ⇒ See following presentation by Elodie Willard (Orano Mining)



Map representing in red magnetic anomalies (first order) and U anomalies (yellow) in western France



ReunEM Geosurvey of the Reunion island in 2014 with FEDER, regional and state funding (2,4 M€)  
 © BRGM, R.Carayol

# French exploration national program and the mineral resources inventory

French cover of geochemical analyses on stream sediments during the national inventory (Source: BRGM report RP53546FR 2005)

Oil shock in 1973 → Government inquiry into the supply of raw materials for French industry

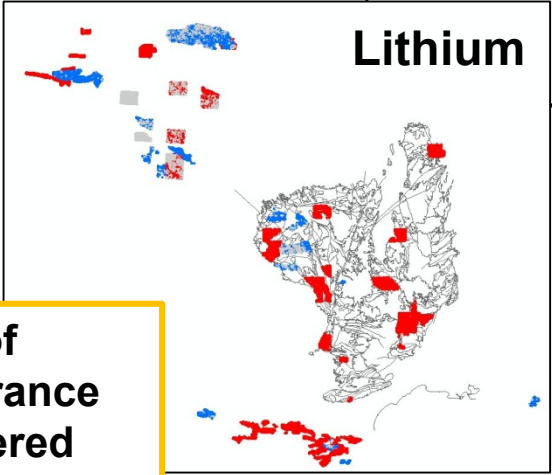
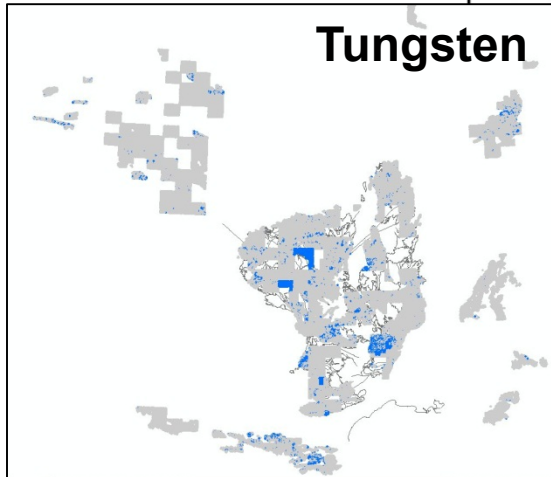
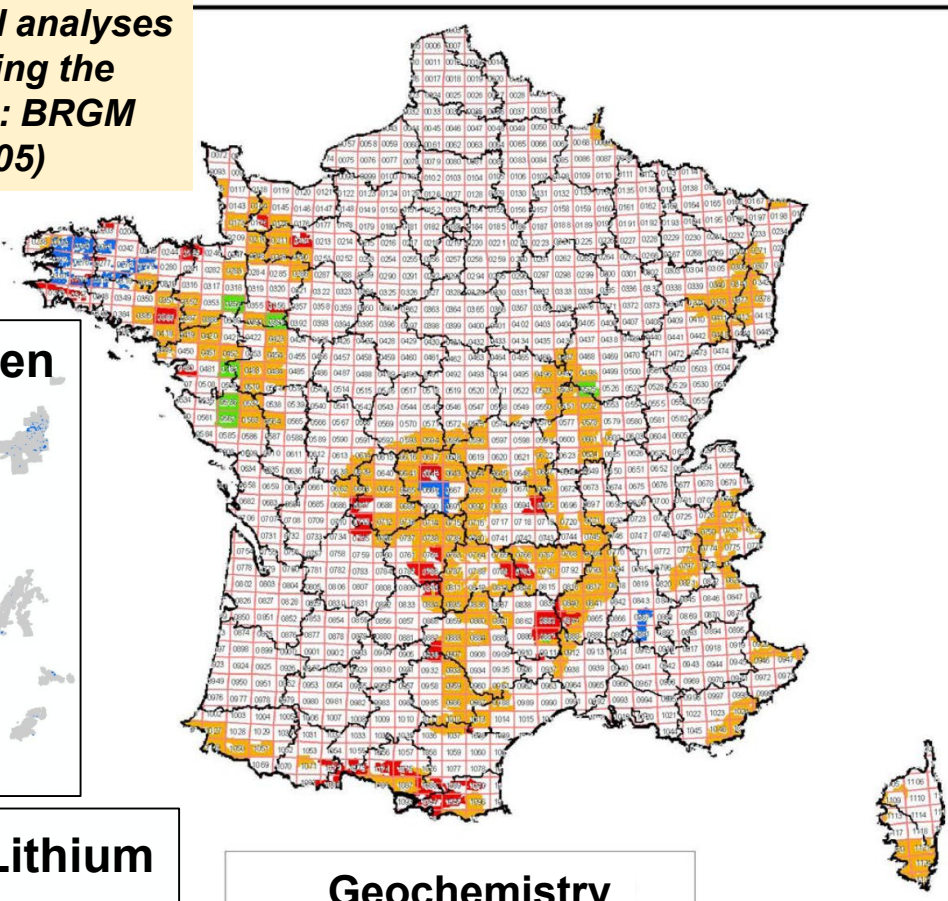
The Ministry of Industry assigned the **BRGM**, as part of its public service mission, to realize an “**Inventory of Mineral Resources in the National Territory**” (1975-1991 metropolitan ⇨ 1995 in some overseas territories as French Guiana):

- Assess the **French raw material potential**
- **Promote** mineral exploration and production

- Strategic prospecting campaigns
- "Stream sediments" (~285,000 samples over 102,000 km<sup>2</sup>)
- "Alluvial" complementary surveys (97,000 samples)

⇨ **Discovery of 2,000 new occurrences**

**Only 20% of metropolitan France has been covered**

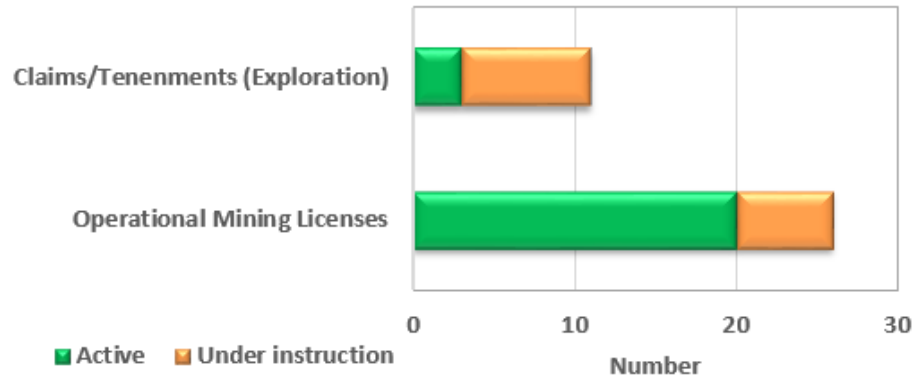


Geochemistry	
DCP	234 379 éch
ICP	34 999 éch
Quanto	10 122 éch
3 à 7 élém.	4 935 éch
<b>Total</b>	<b>284 435 éch</b>
<b>Number of samples</b>	

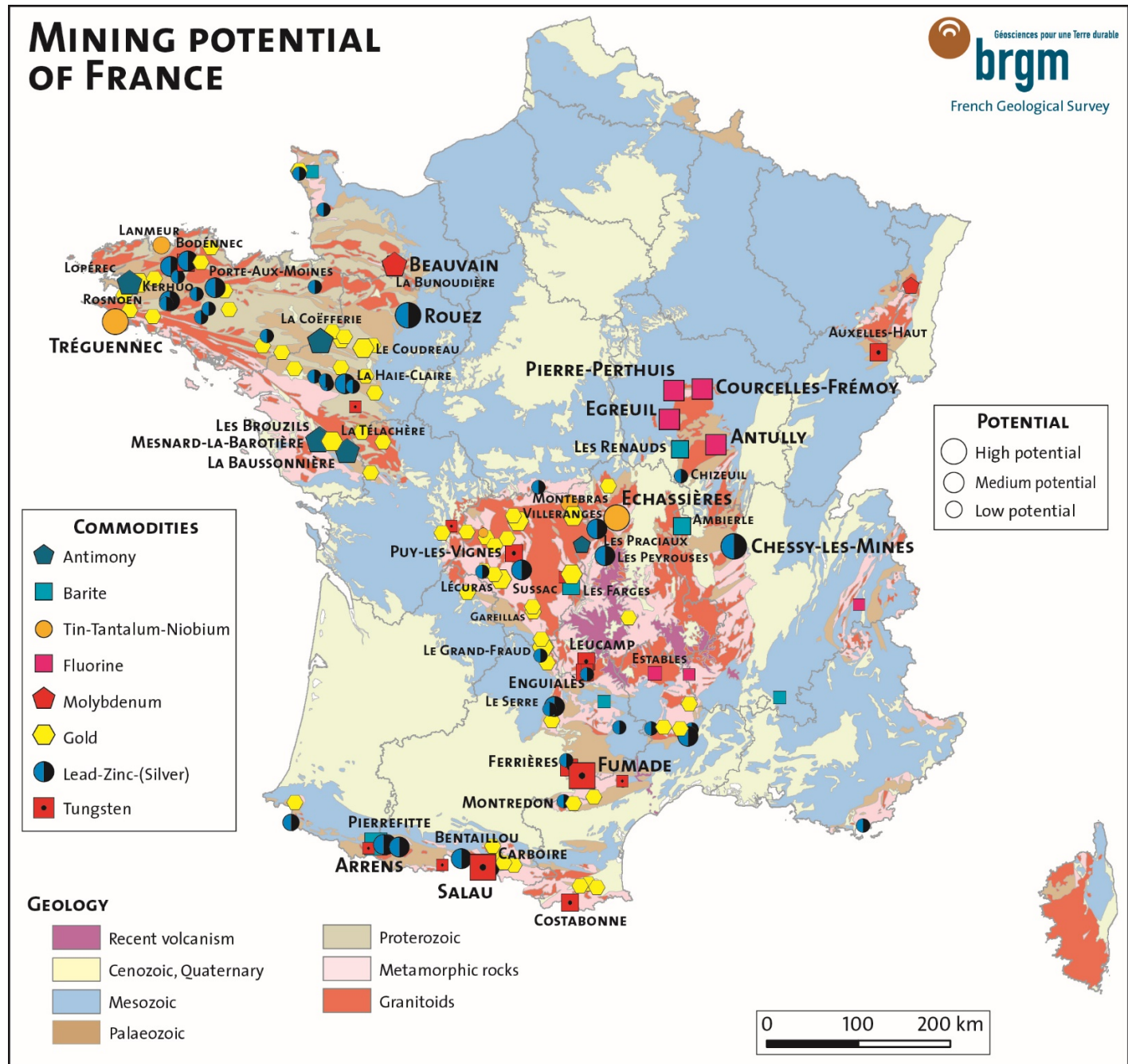
# Mining potential of Metropolitan France

- 176 licenses in France (metropolitan+overseas)
- 20 active mining licenses in metropolitan currently valid and/or in operation** (salts, bauxite, fluorine, bituminous carbonate schists)

Metropolitan France



Source: [www.mineralinfo.fr/page/lactivite-miniere-en-france](http://www.mineralinfo.fr/page/lactivite-miniere-en-france) and [camino.beta.gouv.fr](http://camino.beta.gouv.fr) (data consulted on 15/06/2021)



# Criticality assessment for France

- 34 commodities studied since 2015 for the French National Comity for Strategic Metals (COMES)



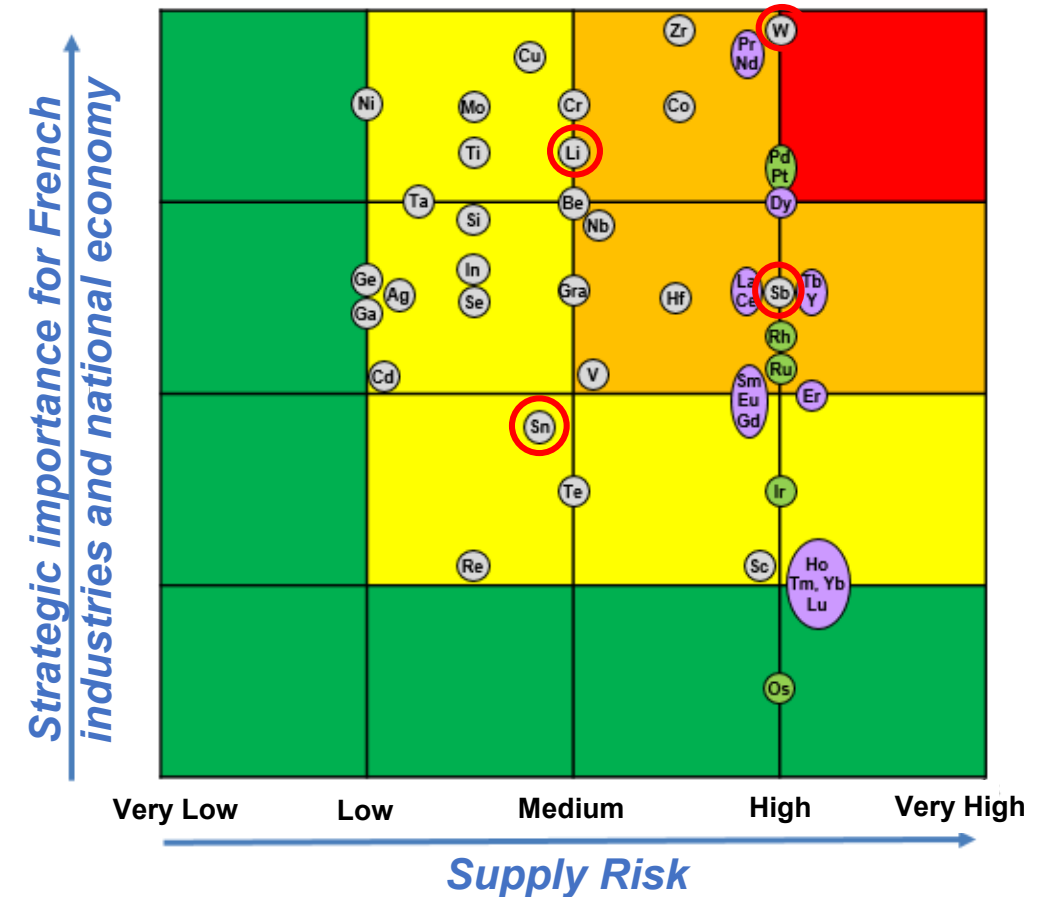
## Key factors:

### Supply Risk Analyses:

- Identified reserves of primary resources and location of deposits
- World production (mining and metallurgy : producers and processors with their strengths and weaknesses)
- Risk factors (industrial, environmental, geopolitical and societal)

### Analysis of demand:

- Global consumption (uses and user industries)
- Mapping industrial channels and positioning of the players (partnerships, competition, monopolies, etc.)
- Assessment of a companies' exposure to risks (fluctuation of raw materials' prices, regulations, government policies, etc.)
- Recent market developments and impacts on users (substitutions, technological changes, new markets, recyclability...)



Source: <http://www.mineralinfo.fr>

**Critical Raw Materials** are both of high **economic importance** for the considered state/sector/industry and have a **high risk of supply disruption**

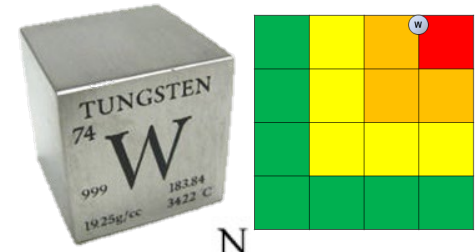
# Potential for some selected critical metals in metropolitan France

## Tungsten (W) in France

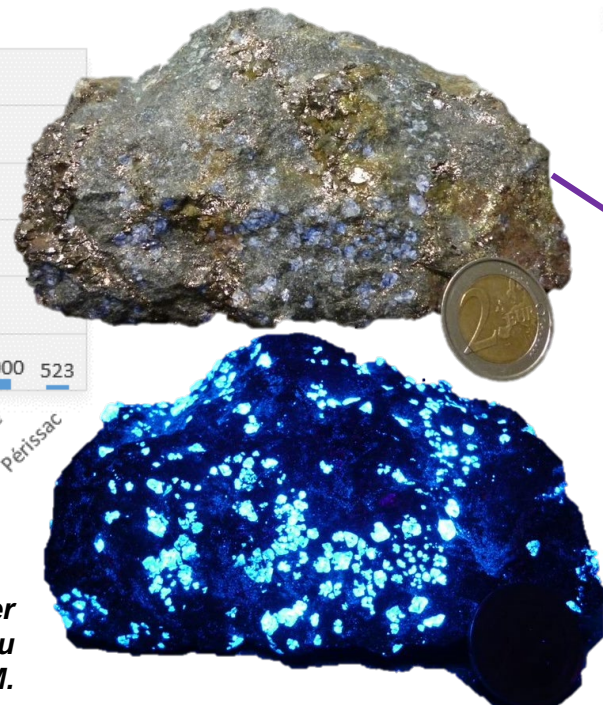
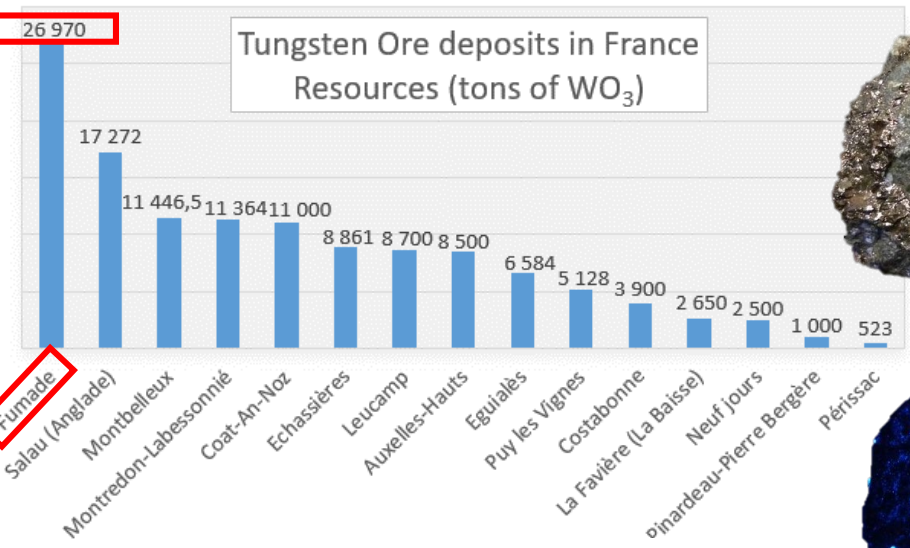
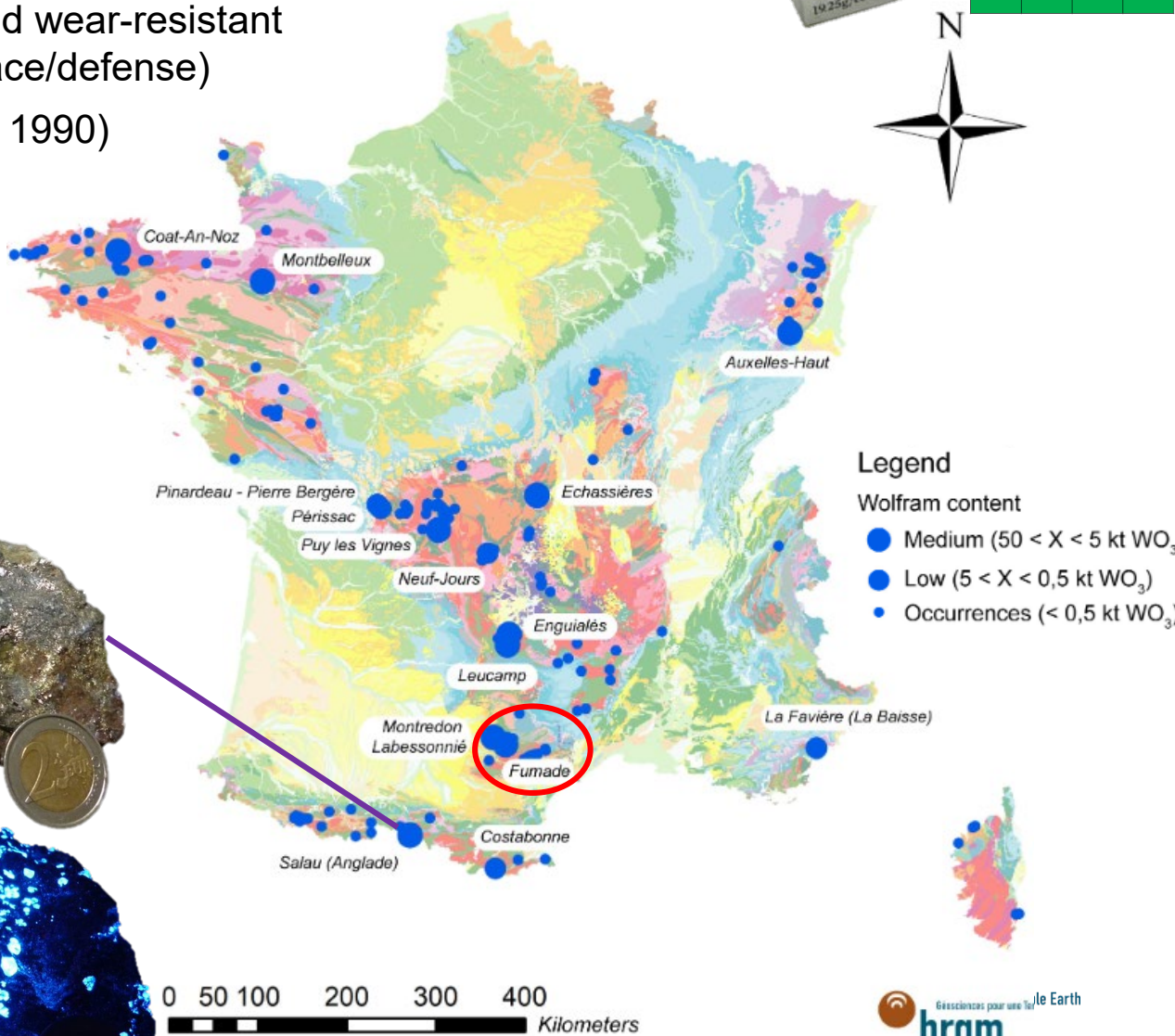
- ❑ Uses: hard metals/cemented carbides in steels, superalloys and wear-resistant (drilling and cutting tools, automotive components and aerospace/defense)
- ❑ Many known resources in FR (but almost no prospection since 1990)
- ❑ 2 distinct deposit types
  - Skarns
  - Quartz-Wolframite veins
- ❑ 2 distinct bearing minerals:
  - Scheelite ( $\text{CaWO}_4$ )
  - Wolframite ( $(\text{Fe},\text{Mn})\text{WO}_4$ )

France was an important producer: 3<sup>rd</sup> in Europe until 1986

❑ Past production: 25 361 t  $\text{WO}_3$  (12 415 t Salau)



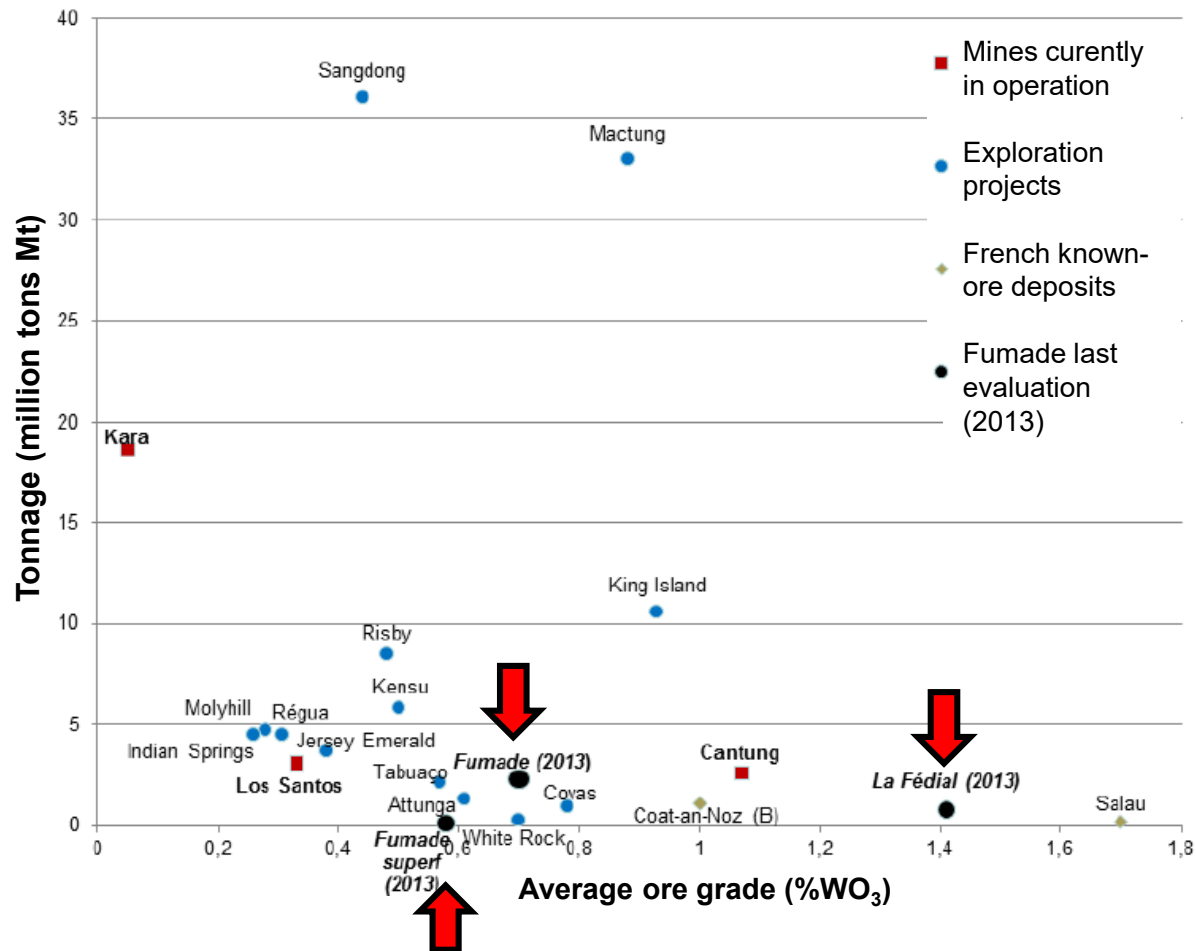
Tungsten in France  
Deposits and occurrences



Scheelite ore under UV from Salau deposit © Picault M.

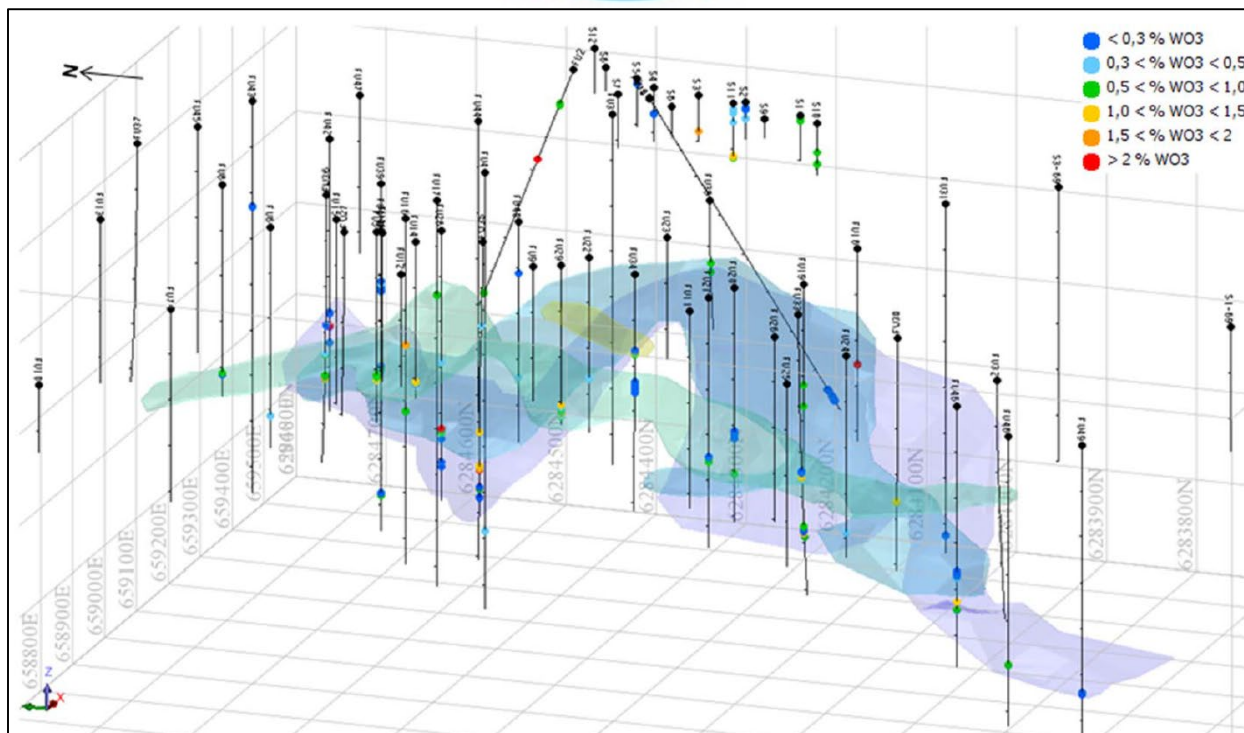
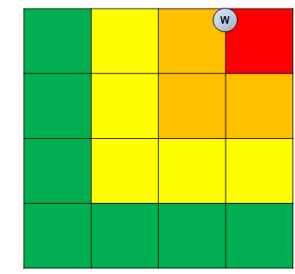
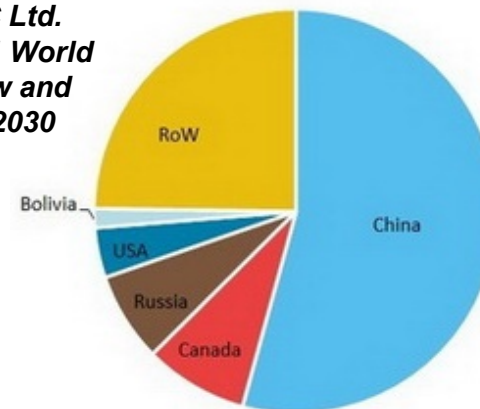


**Fumade W skarn deposit in Tarn department: ore grades vs. tonnage and comparison with other skarn deposits (Audion, 2013 ; BRGM/RP-62718-FR)**



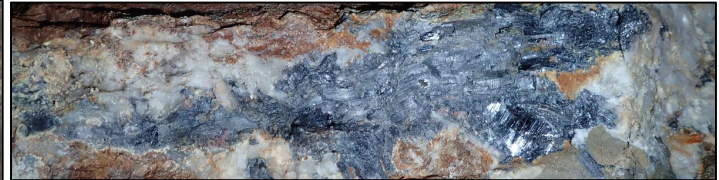
**World Reserves of Tungsten**

Source: MRC Ltd.  
Tungsten: 2021 World Market Review and Forecast to 2030



**Fumade 3D-modeling of mineralisation zones with respective average grades (%WO<sub>3</sub>) and historical drillholes-collar traces**

# Antimony (Sb) in France

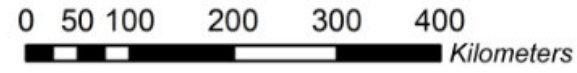
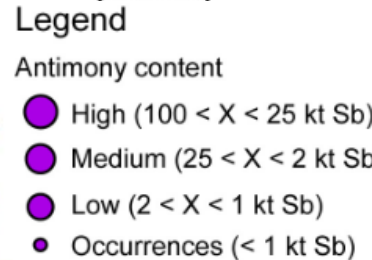
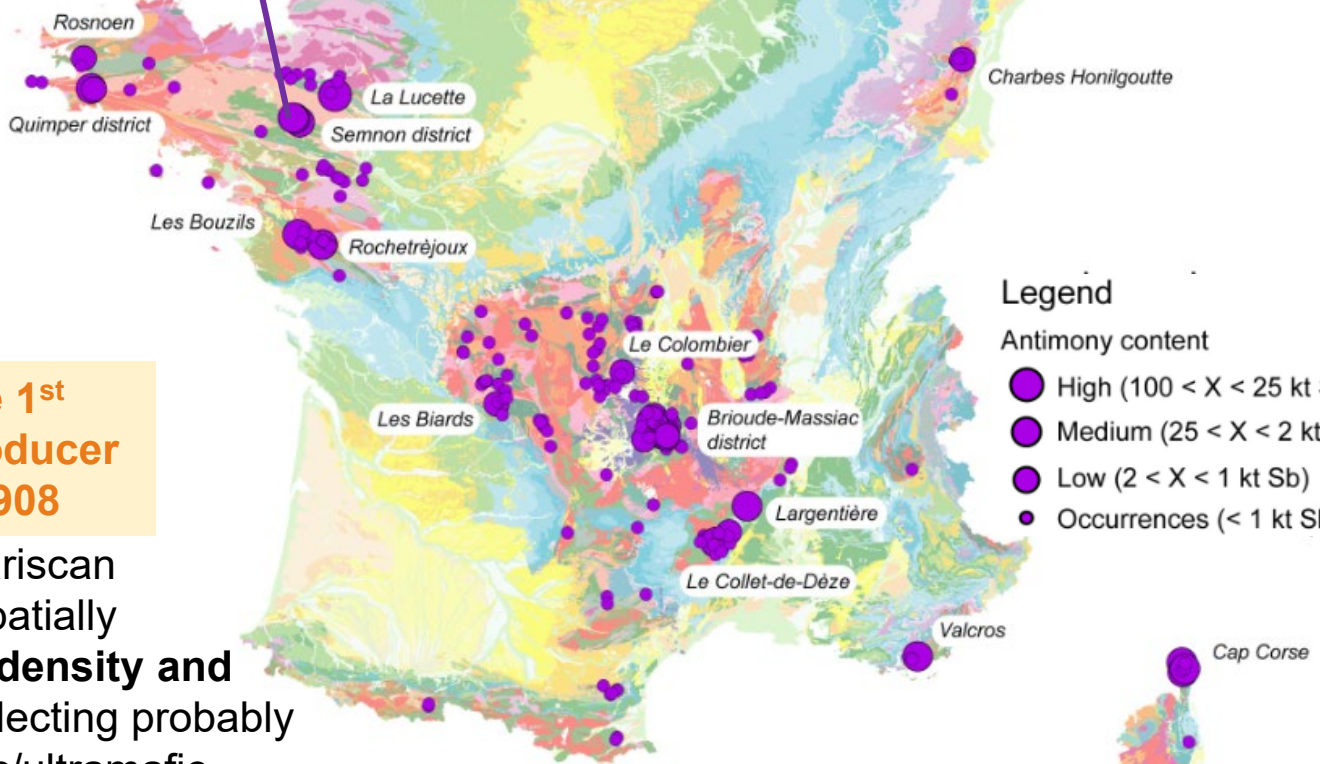
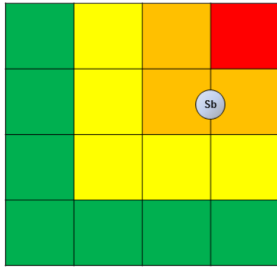


Uses : flame retardant materials, batteries Pb-Sb, insulating sheathing, plasturgy additive...

- 3 main deposit types:
  - Quartz-Stibnite veins
  - By-product of Pb-Zn stratiform deposits
  - Disseminated in Carbonates

- 2 distinct minerals:
  - Stibnite ( $Sb_2S_3$ )
  - Berthierite ( $FeSb_2S_4$ )

Past production: 125 203 t Sb (42 000 t Sb for La Lucette)

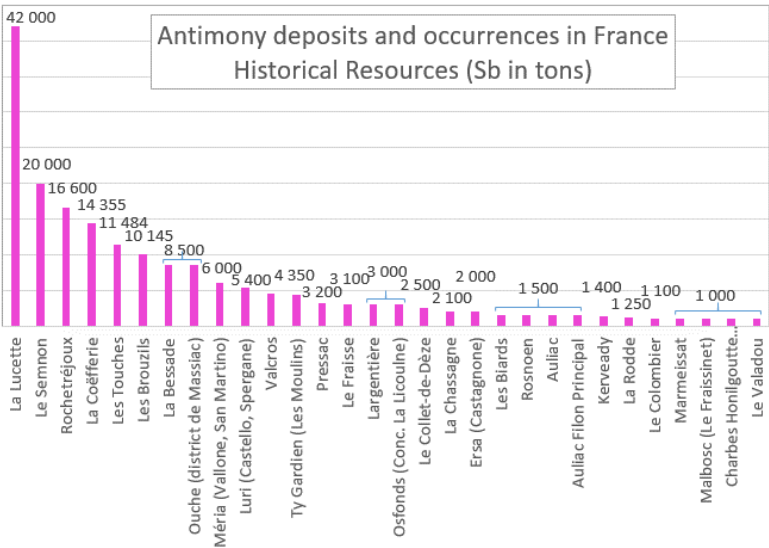


Gourcerol et al. 2021 (BRGM+MTE) in prep.  
Data sources  
Armada/ProMine database updated to June 2021  
Geological map of France at 1:1 000 000

France was the 1<sup>st</sup> leading World producer from 1890 to 1908

Sb deposits in the Variscan Armorican belt are spatially correlated with **high-density and magnetic zones**, reflecting probably the presence of mafic/ultramafic bodies at depth (Pochon et al. 2016, Terra Nova 28)

⇒ a key for Sb prospecting in deformation belts

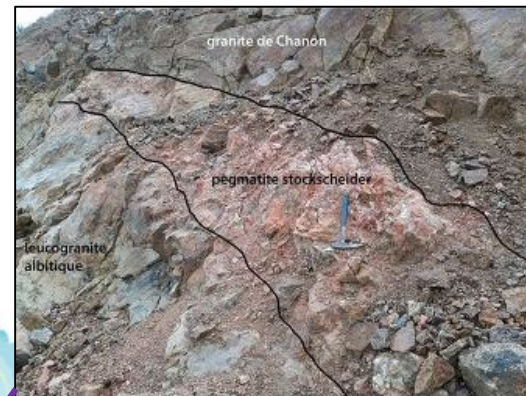
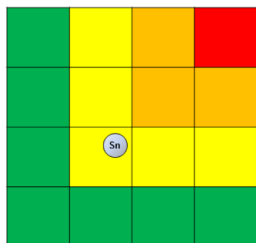


# Tin (Sn) in France

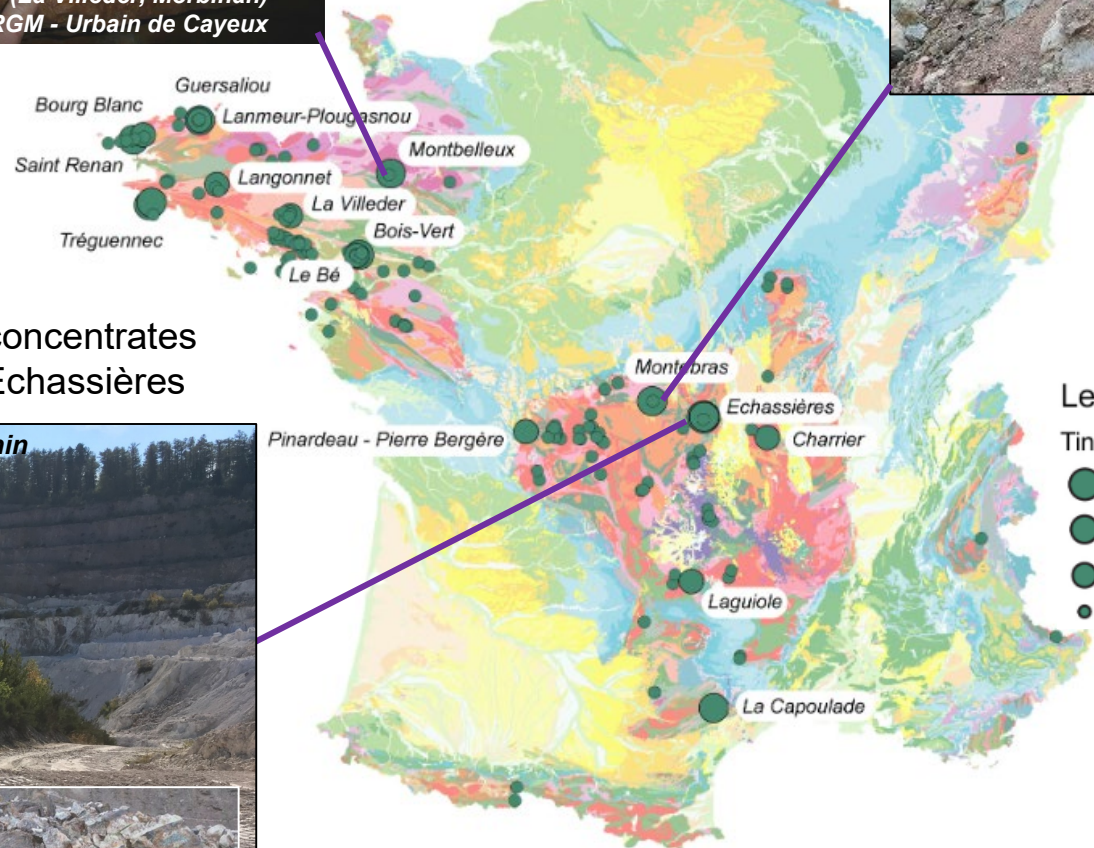
Uses: electronic welding, semi-conductors, alloying, coatings and powder applications

Deposit types:

- Qtz-veins stockwerks or pegmatites-hosted cassiterite ( $\text{SnO}_2$ ) related to emplacement of peraluminous granites
- Stockscheiders
- Greisens (Sn-W)

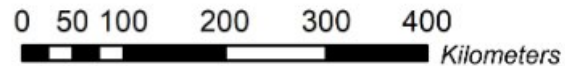


Tin in France  
Deposits and occurrences



Pegmatite Stockscheider  
between 2 granites  
(Montebbras)  
© E. Marcoux

Legend  
Tin content  
 ● High ( $100 < X < 25 \text{ kt Sn}$ )  
 ● Medium ( $25 < X < 2 \text{ kt Sn}$ )  
 ● Low ( $2 \text{ kt} < X < 100 \text{ t Sn}$ )  
 ● Occurrences ( $< 100 \text{ t Sn}$ )

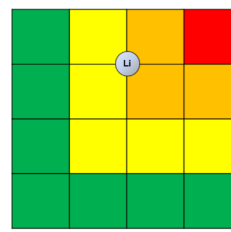


Data sources  
Armada/ProMine database updated to June 2021  
Geological map of France at 1:1 000 000  
Gourcerol et al. 2021 (BRGM+MTE) in prep.



► Stockwerk of Qtz-W-Sn  
veins La Bosse-  
Echassières  
(Gloaguen et al. 2018  
BRGM/RP-67620-FR)

# Lithium (Li) in France



Lithium in France  
Deposits and occurrences



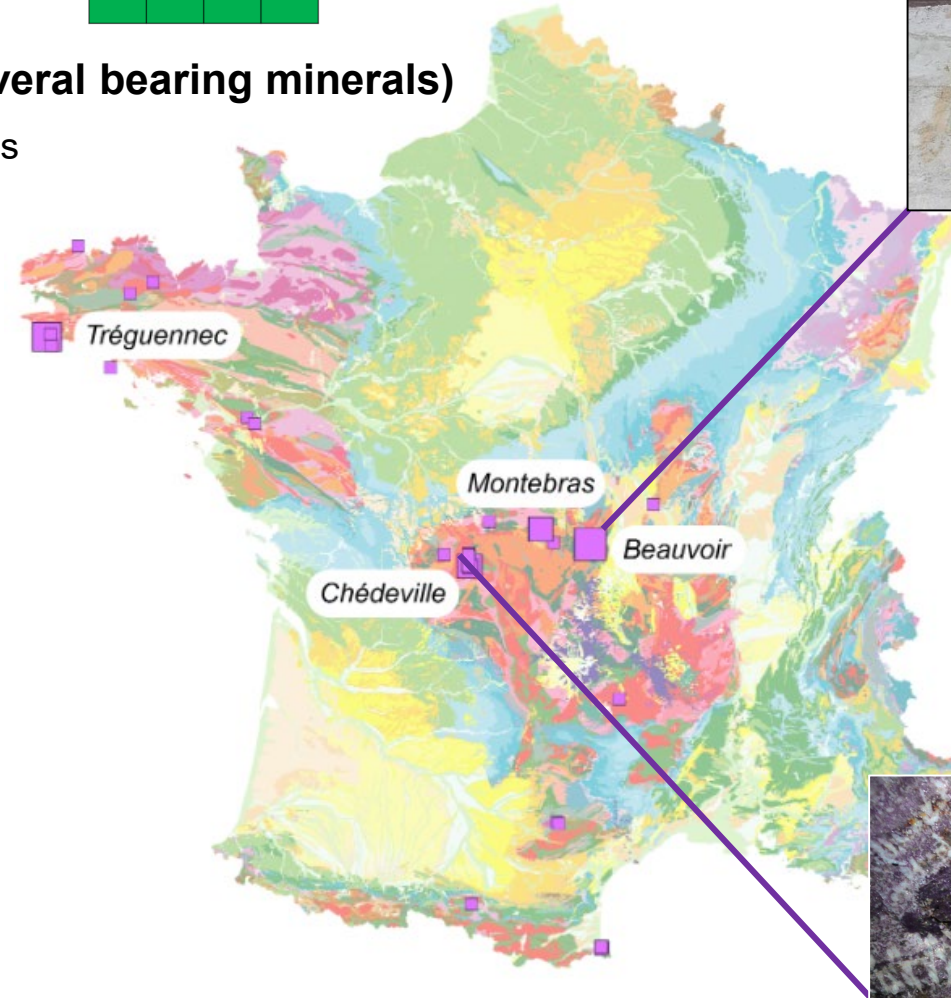
Top of the altered Beauvoir granite (kaolin quarry)  
© BRGM, Eric Gloaguen

Uses: Li-ion batteries, ceramics and glasses, metallurgy...

Main deposit types: **Hard-rock deposits (with several bearing minerals)**

Predictive Li potential assessment in hard-rocks using BRGM's CBA method FR ⇒ EU (Gourcerol *et al.*, 2019, Ore Geology Reviews Vol.109)

IMERYS CERAMICS FRANCE explores Li in rare metal granites (Beauvoir deposit)

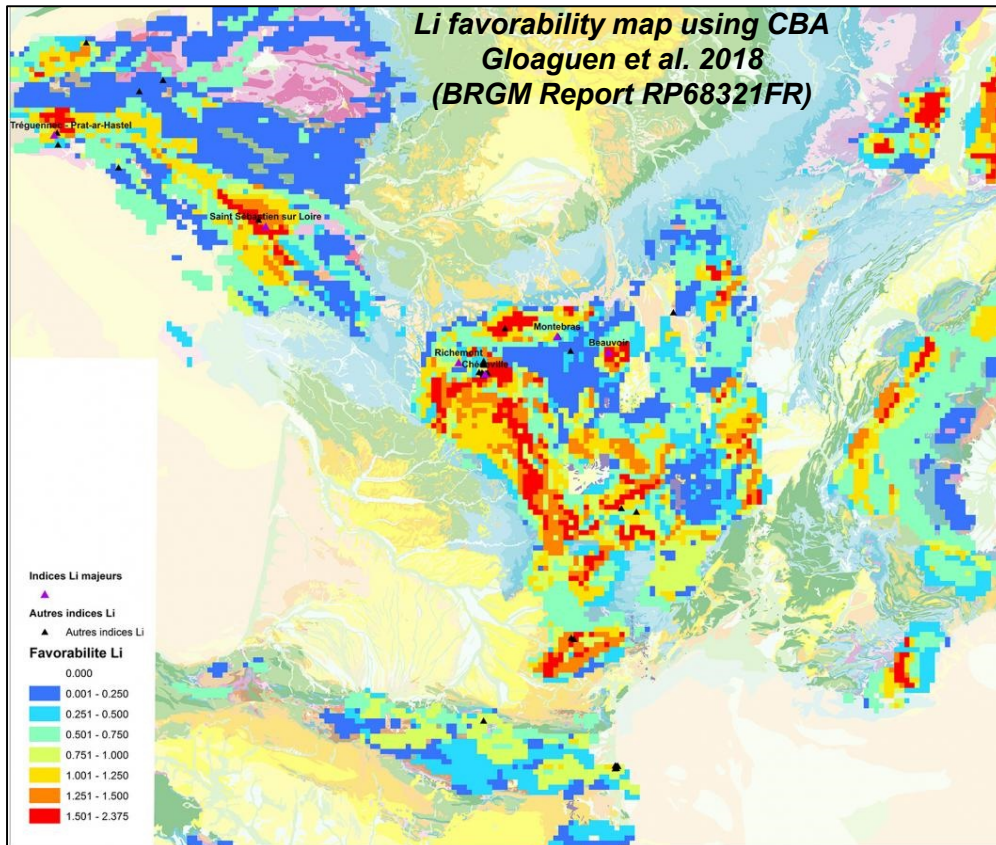


## Legend

Lithium content

- High ( $1\ 000 < X > 100$  kt  $\text{Li}_2\text{O}$ )
- Medium ( $100 < X > 50$  kt  $\text{Li}_2\text{O}$ )
- Low ( $50 < X > 5$  kt  $\text{Li}_2\text{O}$ )
- Occurrences ( $< 5$  kt  $\text{Li}_2\text{O}$ )

**Petalite** ( $\text{LiAlSi}_4\text{O}_{10}$ )  
**Lepidolite**  
 $(\text{K}(\text{Li},\text{Al})_3(\text{Si},\text{Al})_4\text{O}_{10}(\text{F},\text{OH})_2)$   
**LCT-Pegmatite swarms, Chédeville, Monts d'Ambazac (Limousin department, France)**  
© BRGM, Eric Gloaguen



Li favorability map using CBA  
Gloaguen *et al.* 2018  
(BRGM Report RP68321FR)

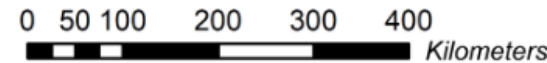
Indices Li majeurs

Autres indices Li

Autres indices Li

Favorabilité Li

- 0.000
- 0.001 - 0.250
- 0.251 - 0.500
- 0.501 - 0.750
- 0.751 - 1.000
- 1.001 - 1.250
- 1.251 - 1.500
- 1.501 - 2.375



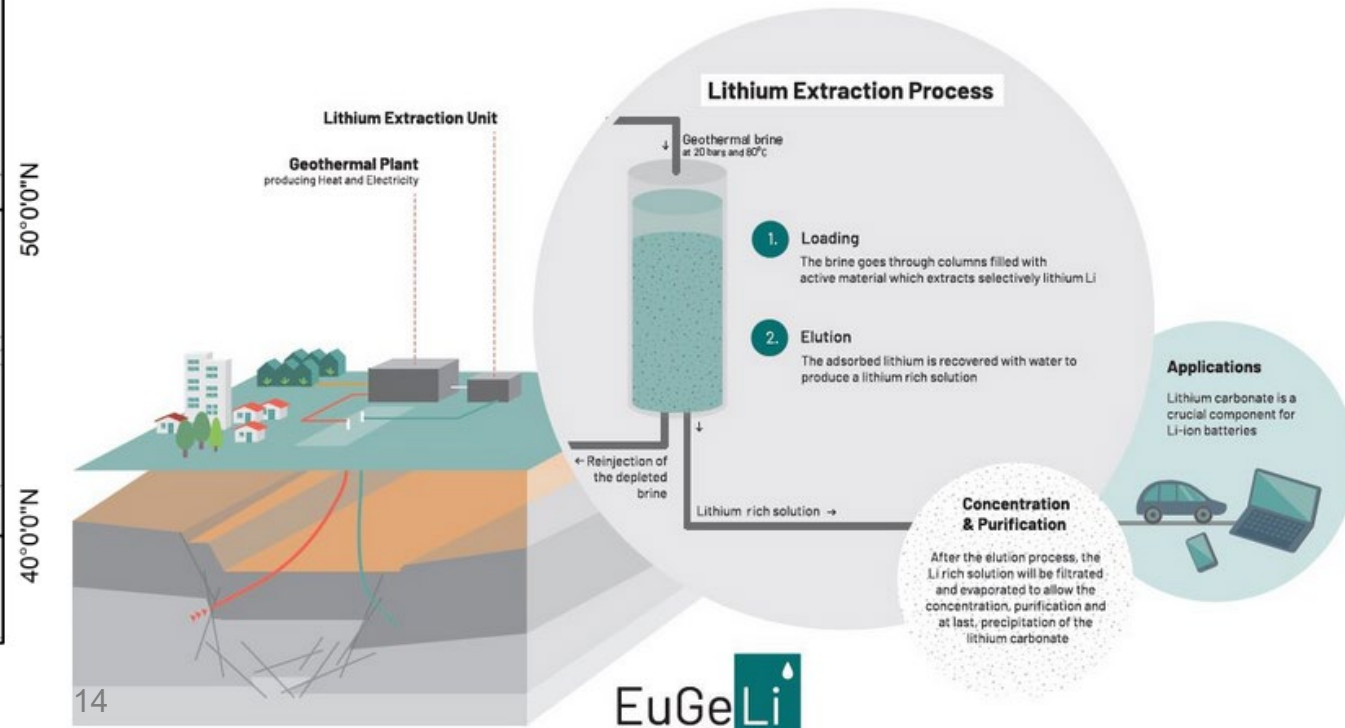
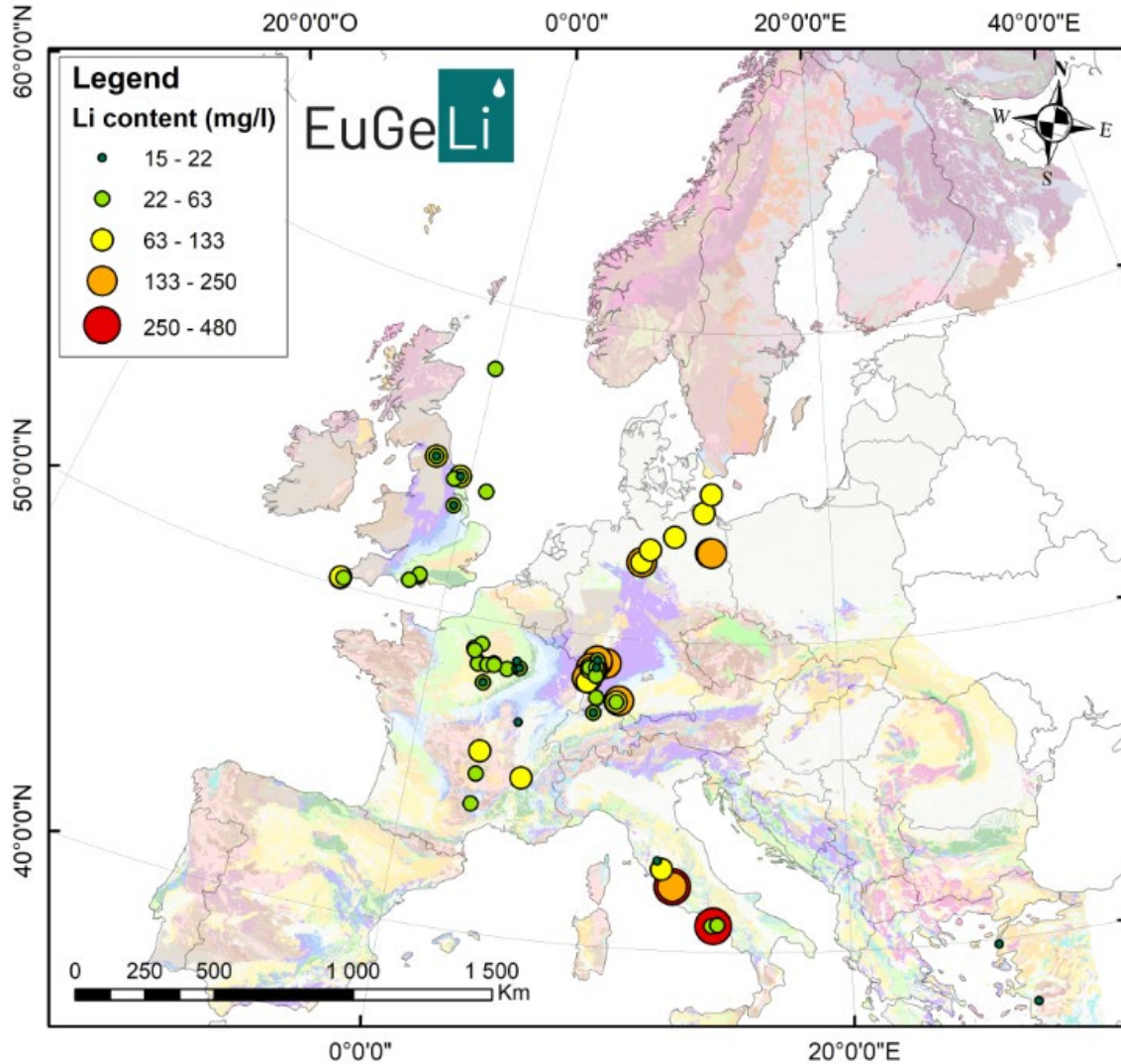
Gourcerol *et al.* 2021 (BRGM+MTE) in prep.  
Data sources

Armada/ProMine database updated to June 2021  
Geological map of France at 1:1 000 000



■ **Deep geothermal brine deposits**

EIT Raw Materials EuGeLi project coordinated by ERAMET (Millot *et al.*, AGU 2020) + following presentation by Clio Bosia for Lithium de France)



- ❑ **Evolving interest in metals** regarding technological innovation and end-uses driving consumption
  - Relatively old aerial geophysical surveys over metropolitan France for mining exploration/deep potential
  - Limited historical data on CRMs in past mineral resource inventories
  - No systematic multi-elemental geochemical analyses during exploration campaigns
  - Evolution of geological knowledge and ore genetic models
- ⇒ **Importance of maintaining research and exploration in France**
- ⇒ **Reprocessing mining wastes and tailings from old historical mining sites with more efficient technologies**
- ❑ **Supply risk disruption evolves, especially with the pandemic context** (pressure on market, variability of prices and demand, new protection policies, transport restrictions, increase of operational costs...)
- ❑ Evolution of the state's strategy according to **economic importance** and **industrial dependency**
- ⇒ **relocation of primary production and value chains for some very critical commodities ?**
- ❑ **Reappraisal of the French metropolitan potential in selected critical metals is essential and promising:**
  - W, Sb, Sn in Variscan orogenic belts (Armorican and Central Massives)
  - Li in hard rocks and geothermal brines
- ❑ Legal mining **framework policy** is **currently reassessed** by the French Government (2021)



**Thank you for your attention**