



**HAL**  
open science

# Measurements and modelling of the effect of a fringing reef and upperbeach vegetation on runup behaviour -A Caribbean Context

Thibault Laigre, Yann Balouin, D Villarroel-Lamb, Manuel Moisan

## ► To cite this version:

Thibault Laigre, Yann Balouin, D Villarroel-Lamb, Manuel Moisan. Measurements and modelling of the effect of a fringing reef and upperbeach vegetation on runup behaviour -A Caribbean Context. Ocean Sciences Meeting, Association for the Sciences of Limnology and Oceanography (ALSO), Feb 2022, Honolulu, United States. hal-03663060

**HAL Id: hal-03663060**

**<https://brgm.hal.science/hal-03663060>**

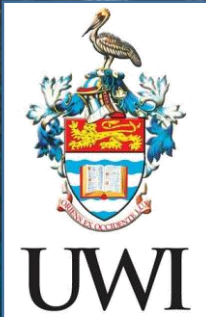
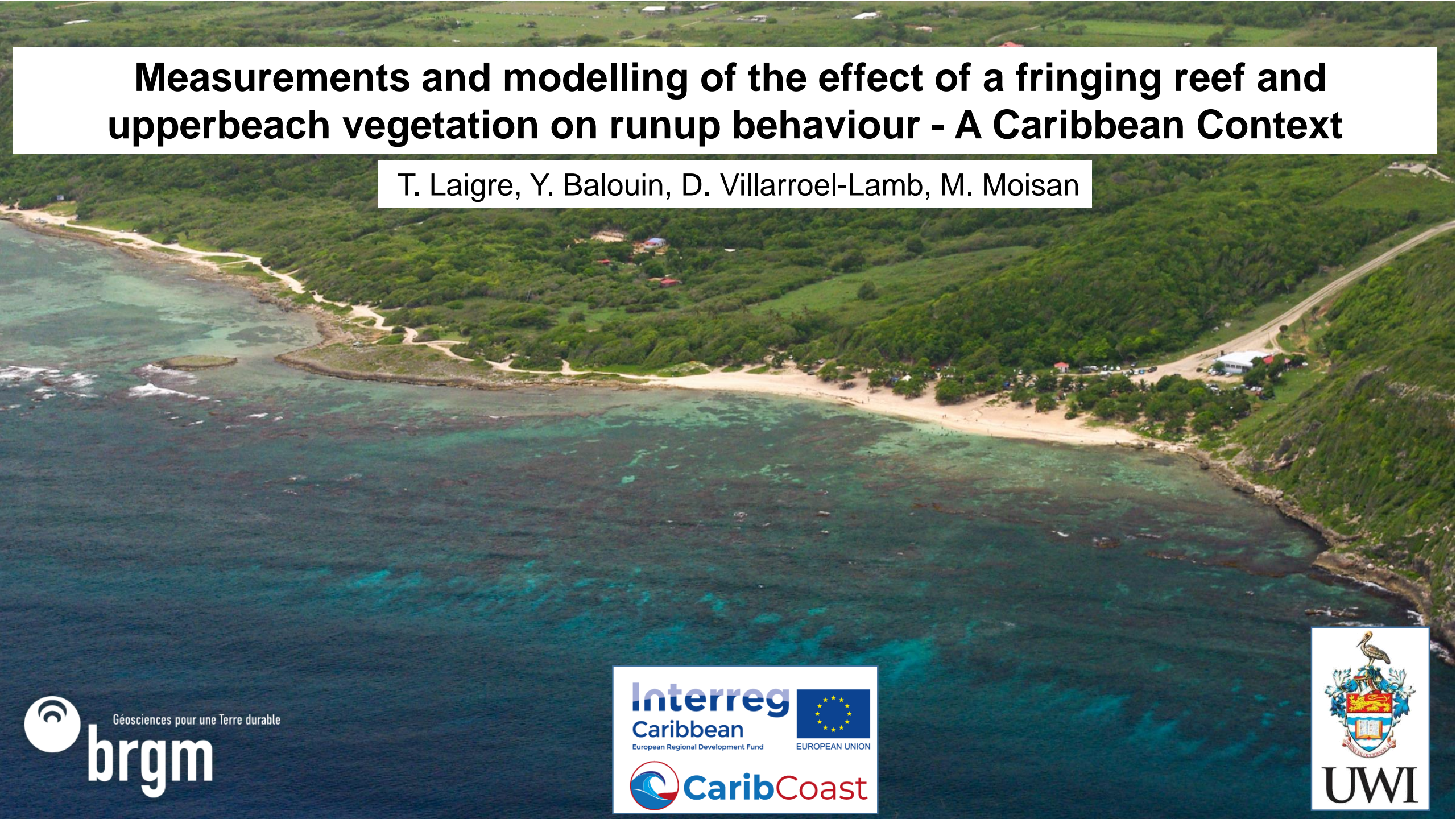
Submitted on 9 May 2022

**HAL** is a multi-disciplinary open access archive for the deposit and dissemination of scientific research documents, whether they are published or not. The documents may come from teaching and research institutions in France or abroad, or from public or private research centers.

L'archive ouverte pluridisciplinaire **HAL**, est destinée au dépôt et à la diffusion de documents scientifiques de niveau recherche, publiés ou non, émanant des établissements d'enseignement et de recherche français ou étrangers, des laboratoires publics ou privés.

# Measurements and modelling of the effect of a fringing reef and upperbeach vegetation on runup behaviour - A Caribbean Context

T. Laigre, Y. Balouin, D. Villarroel-Lamb, M. Moisan



# Site description

Pocket beach with a small lagoon and a fringing reef

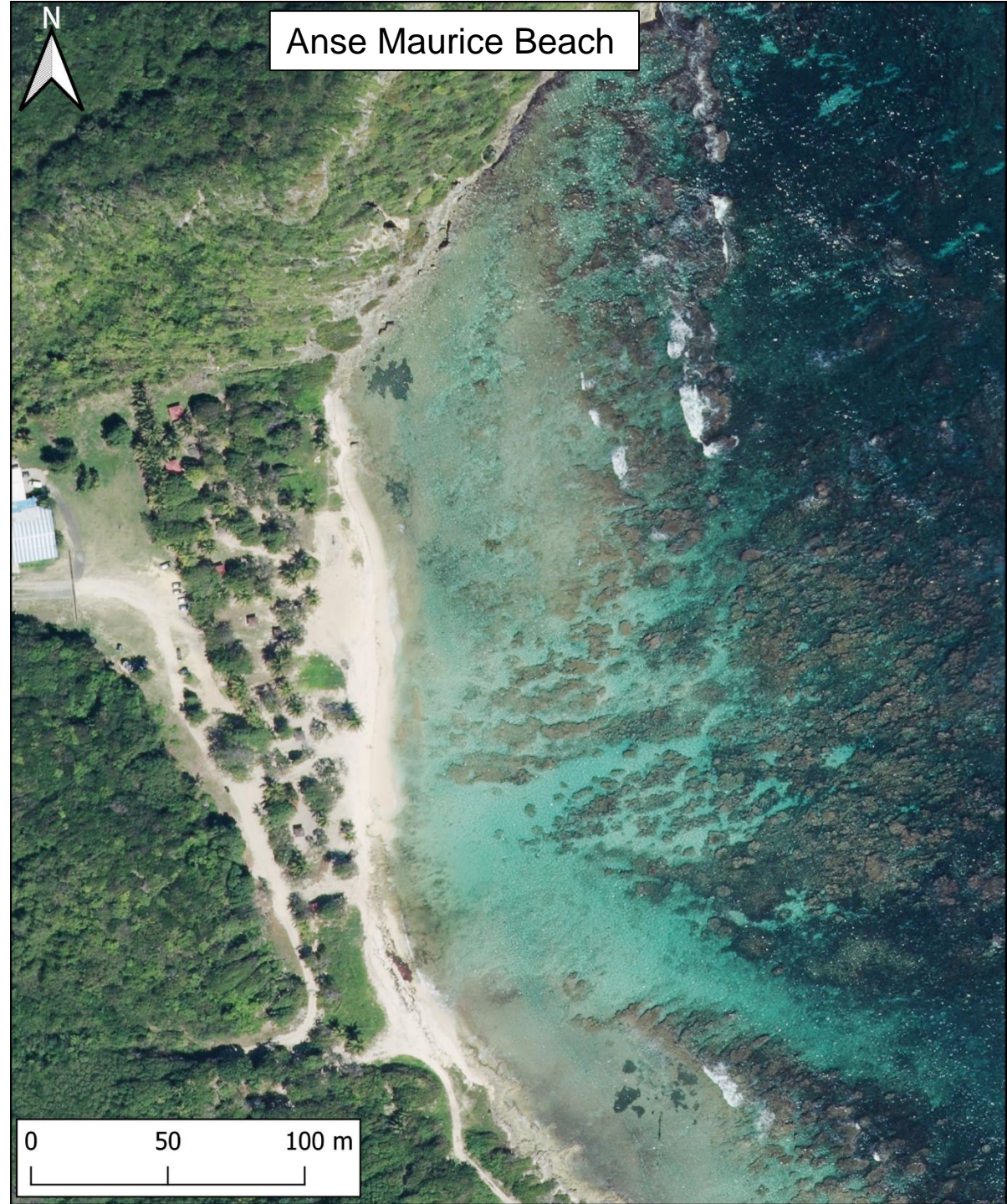
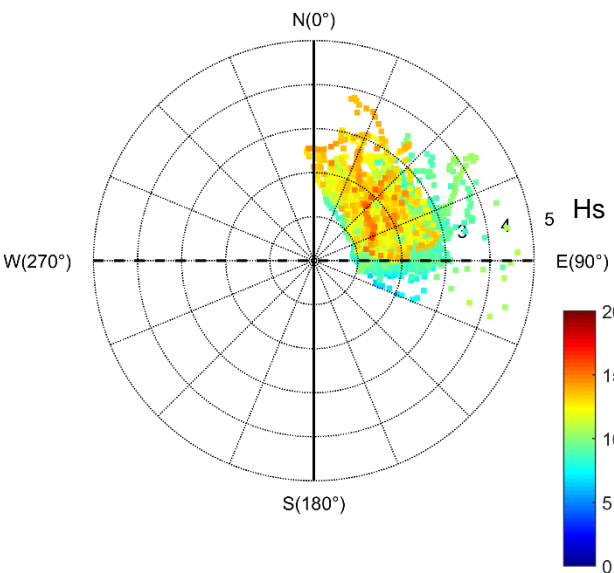
- ~300 m long
- 5-20 m wide

Hydrodynamic :

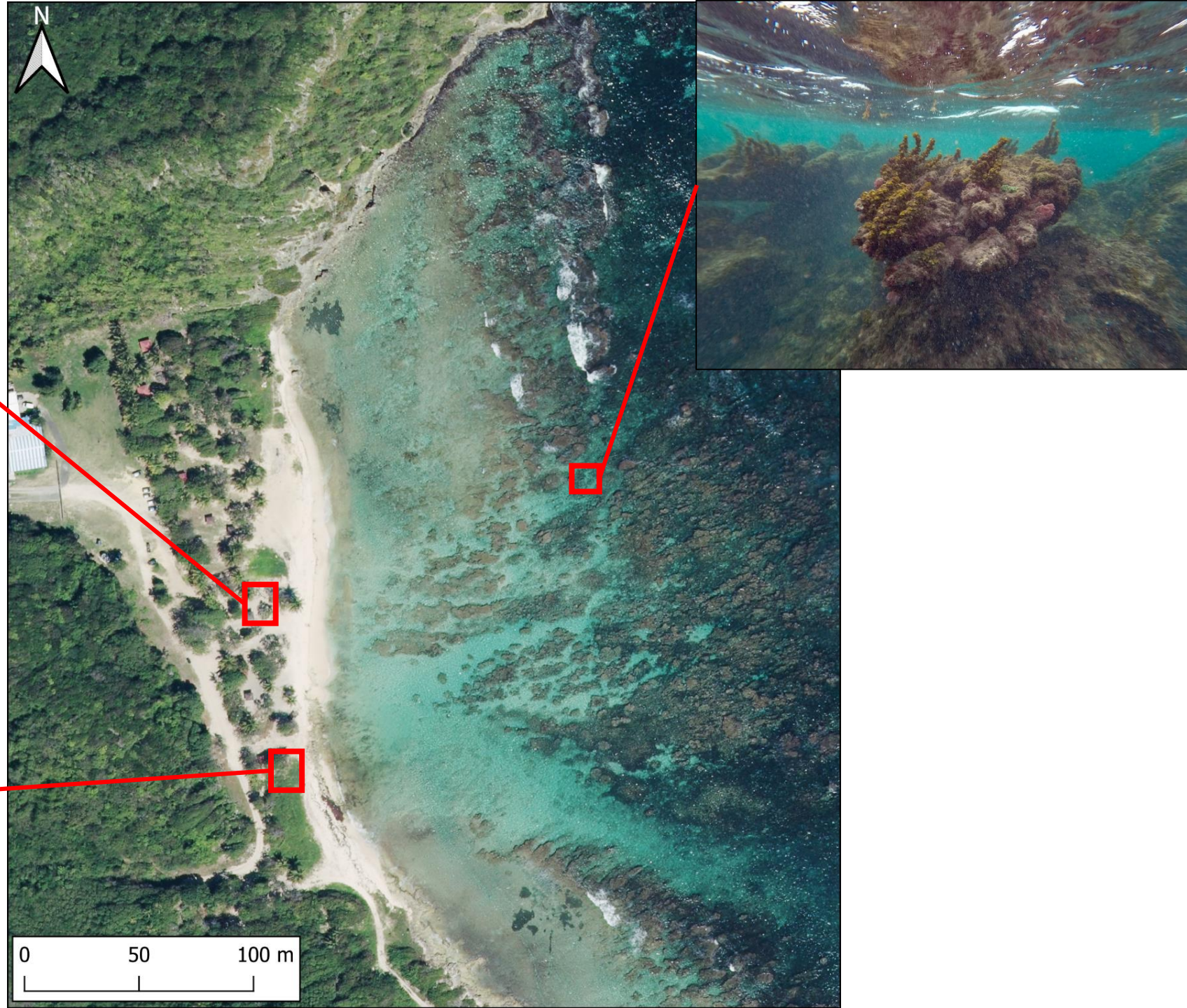
- Exposed to Atlantic winter storms (December-March)
- Episodically exposed to Cyclone (July-November)

Revegetation enclosure from the French forestry agency

Subject to sargassum beaching since 2012



# Site description



# Methodology : Field monitoring

## 2 permanent low-cost video systems :

- Short term (Storm scale) :
  - Identification of swash events
  - Identification overall agitation offshore and on the lagoon
- Mid/long-term :
  - Upper beach vegetation limit monitoring
  - Swash maximum excursion monitoring

## Pre and post-storm RTK-GPS monitoring :

- Ground truth for extractions from cameras
- Morphological evolution

## Local hydrodynamic monitoring:

- Calibration and validation of numerical modelling experiment



# Numerical modelling

## WW3 MARC model outputs (From Ifremer)

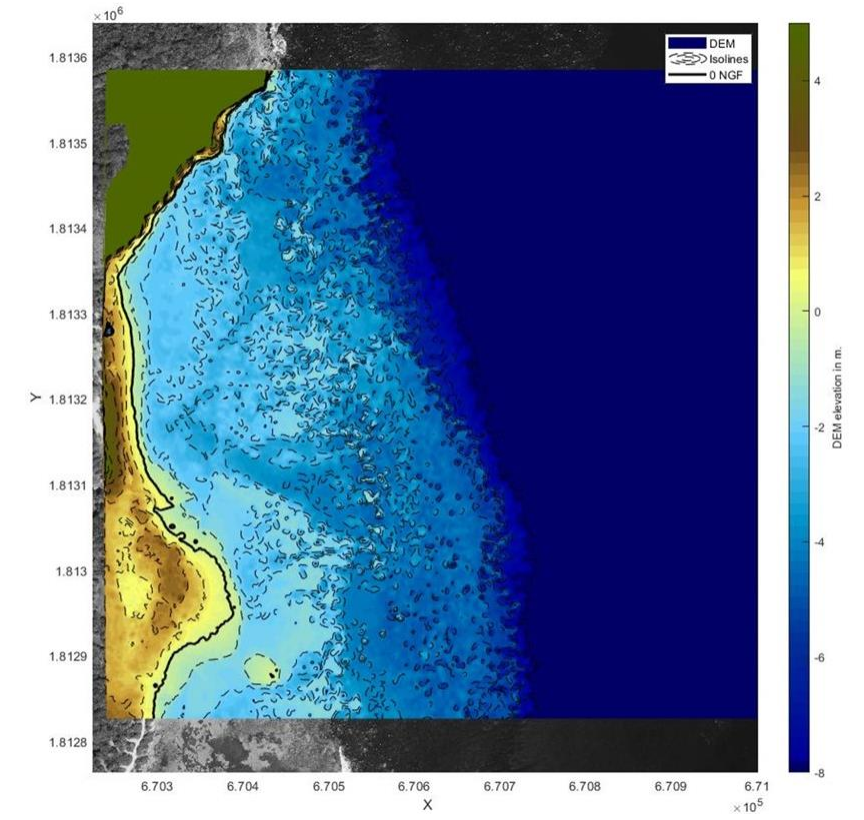
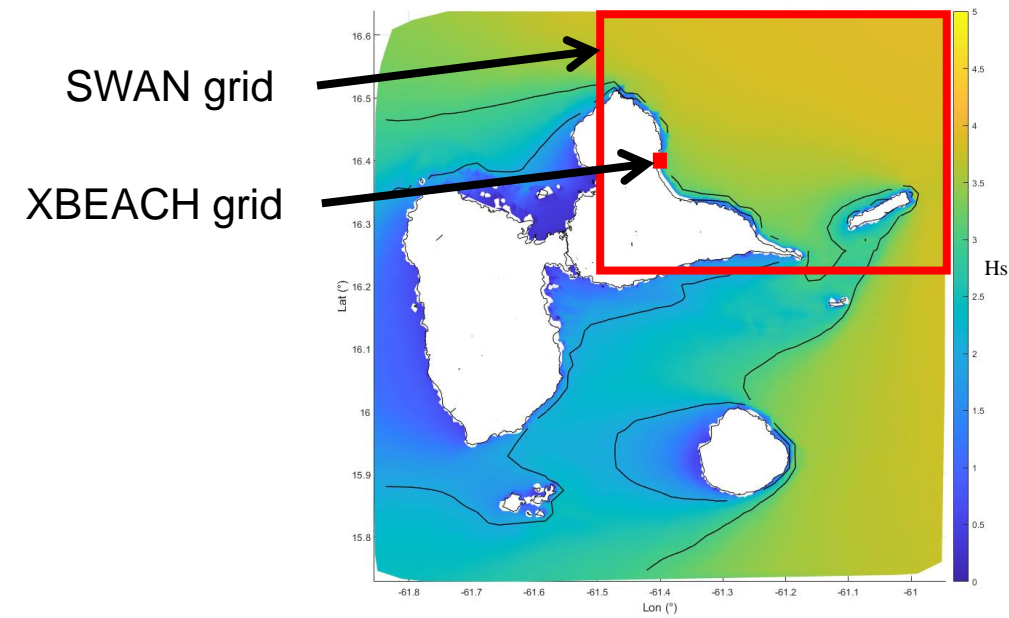
- Inputs for SWAN model

## SWAN model

- Wave propagation up to ~20 depth
- Shows better skills than MARC at nearshore

## XBEACH Non-hydrostatic

- Phase resolving model
- Wave propagation from ~20 depth to shoreline
- Validated with sensors data



# Experimental methodology

## Runup comparison on two profiles

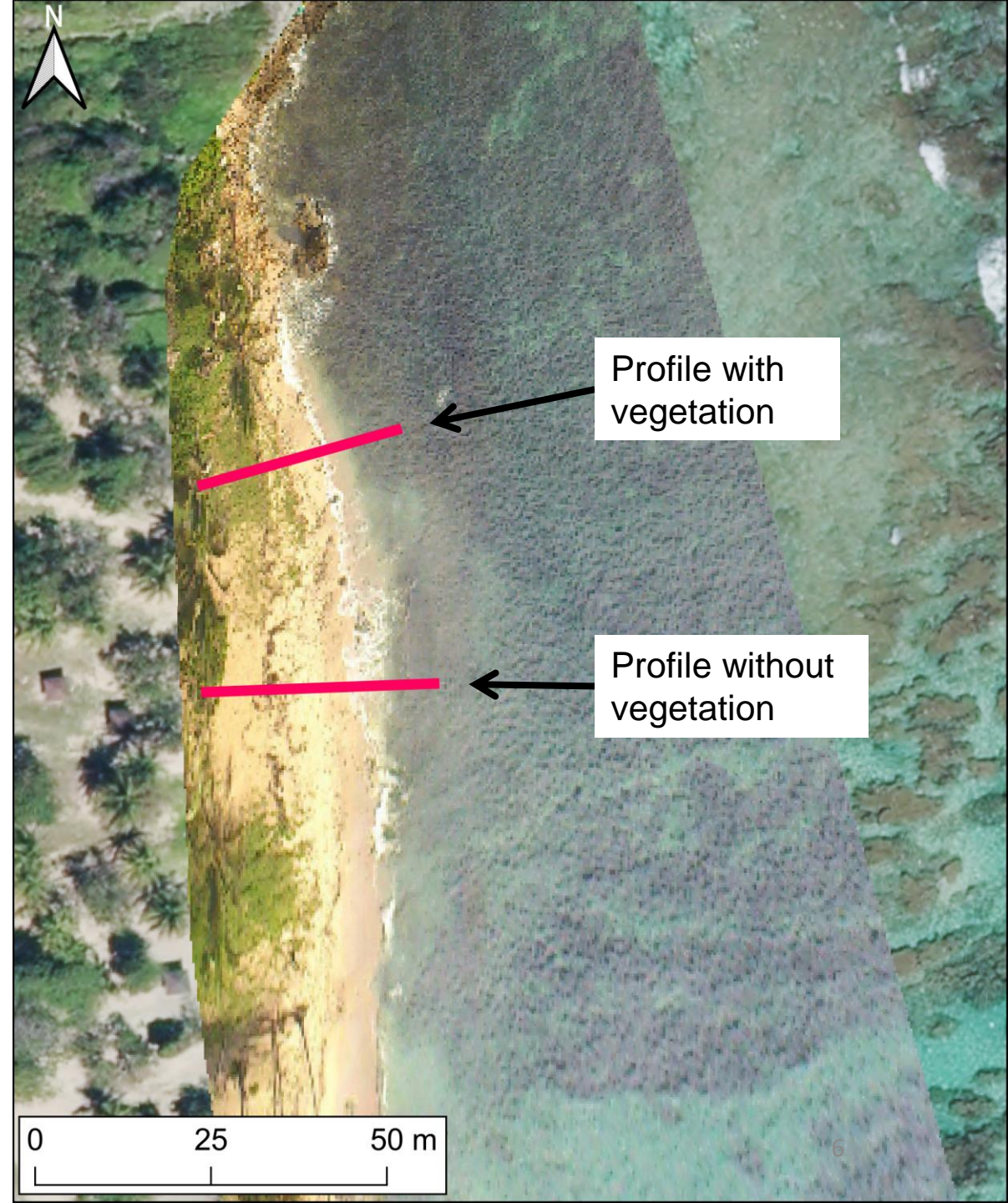
- One with dense upperbeach vegetation
- One without vegetation

### Observations

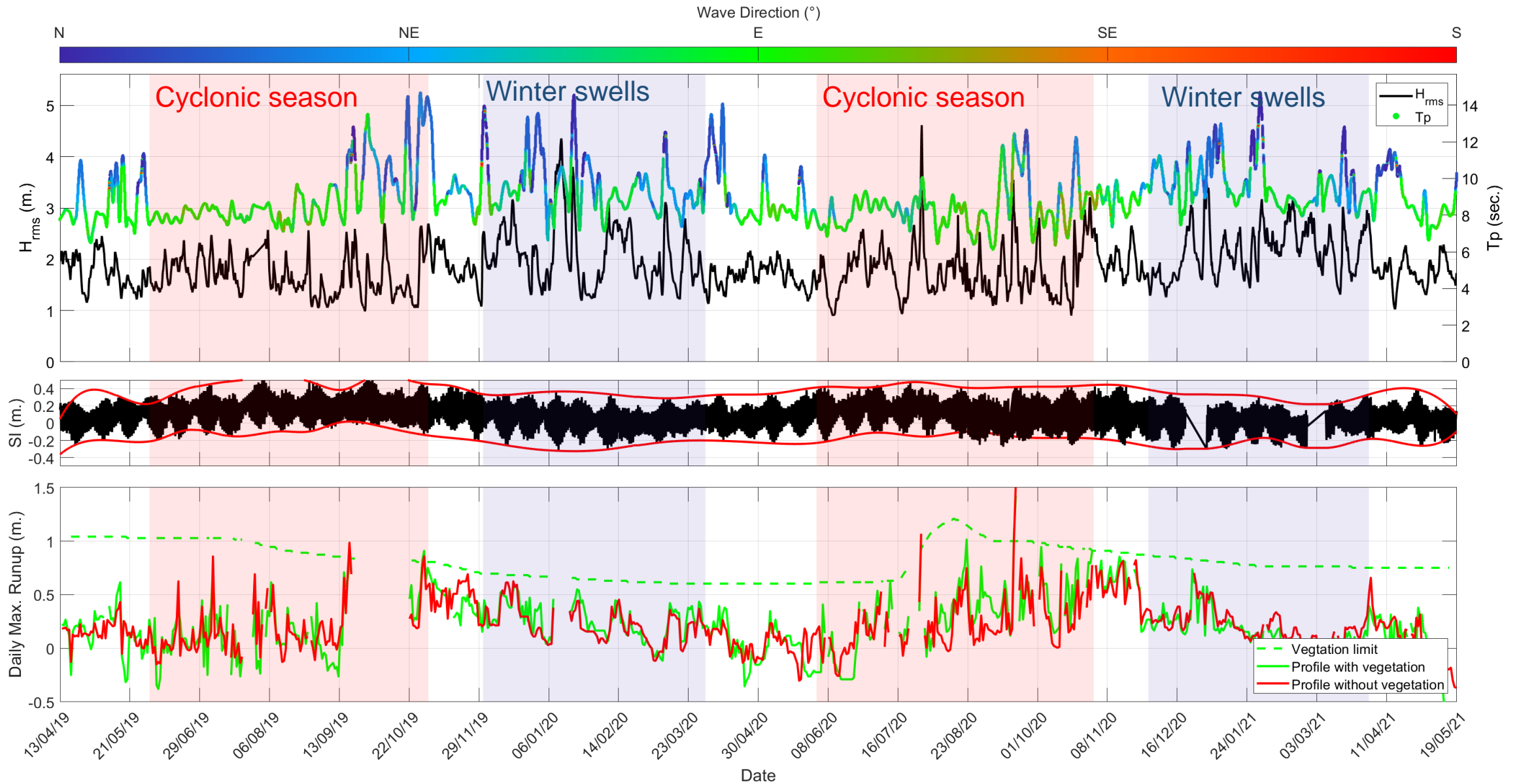
- Daily extraction of maximum swash on images from camera over mid/long term (768 days)

### Numerical modelling

- Runup analysis on a specific storm event

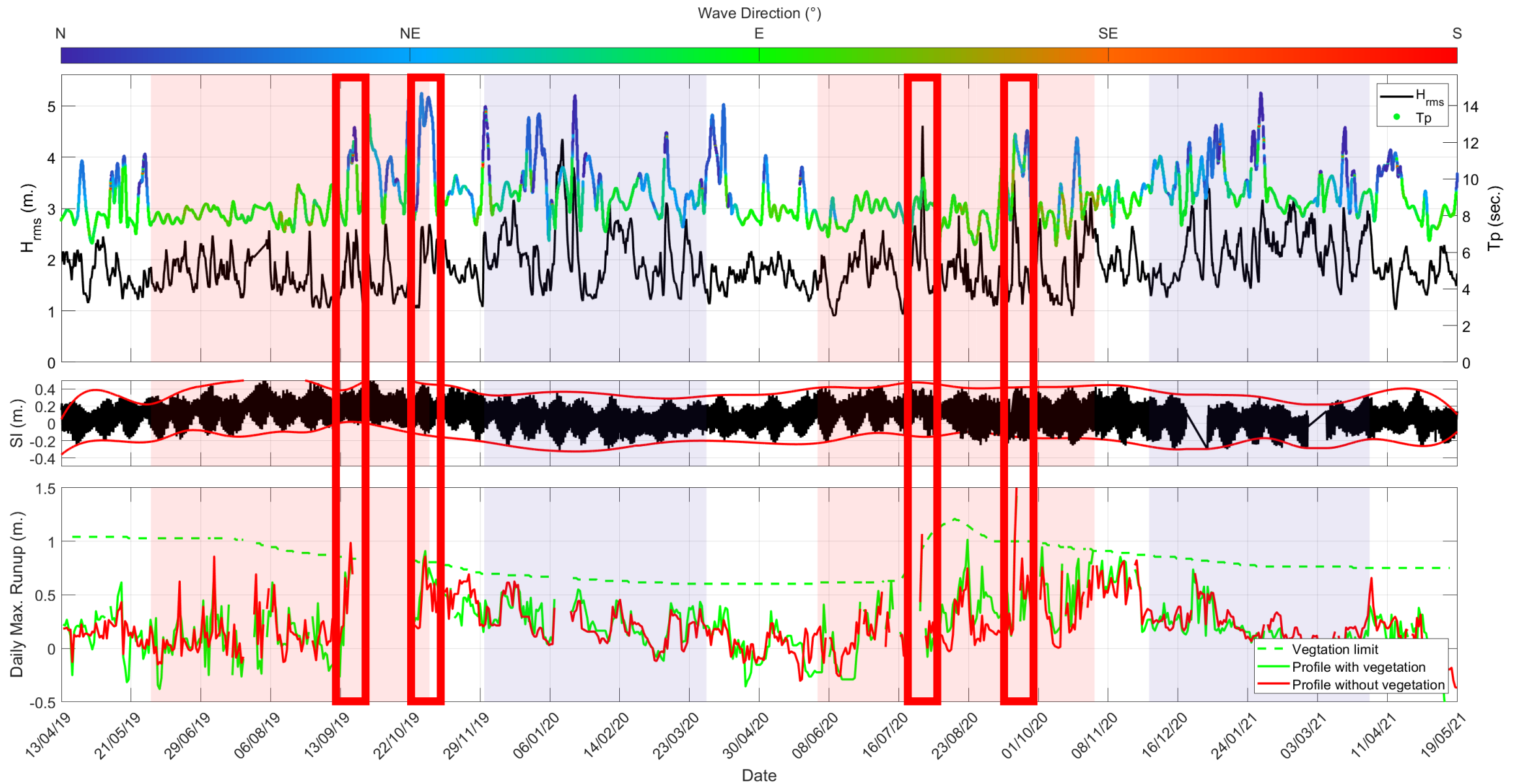


# Results : Mid/long-term observations



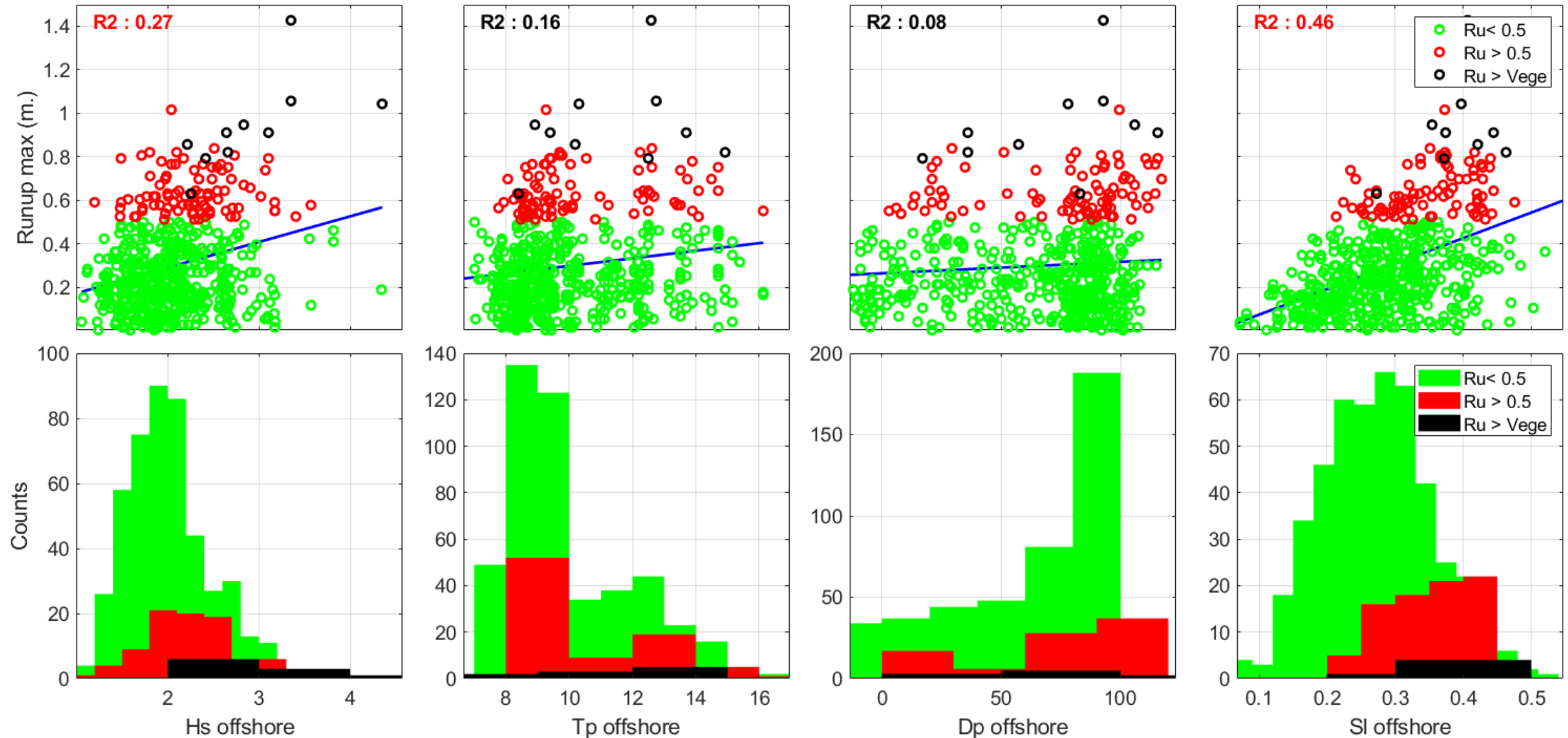


# Results : Mid/long-term observations



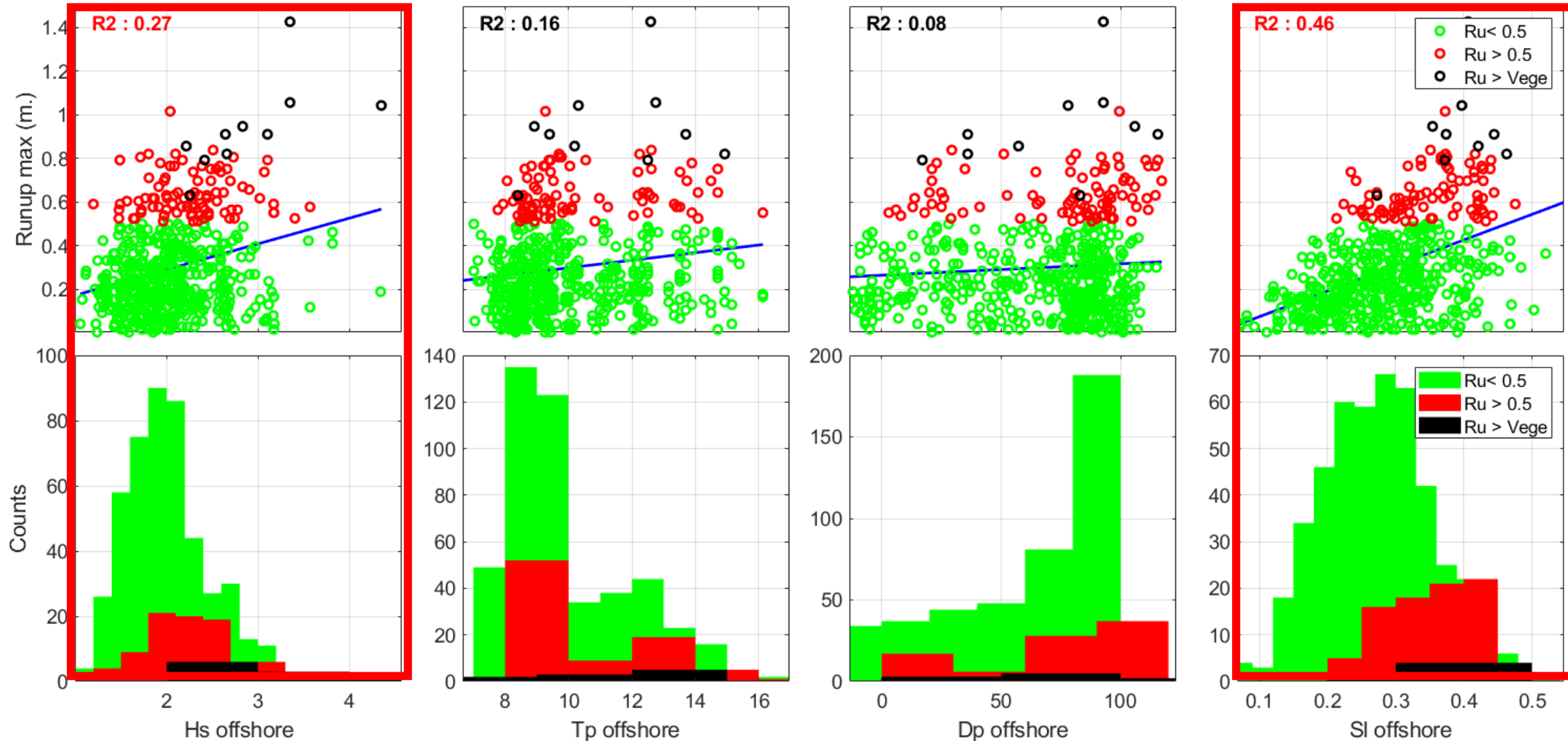
# Results : Mid/long-term observations

## Correlation between daily max. Runup and offshore hydrodynamic



# Results : Mid/long-term observations

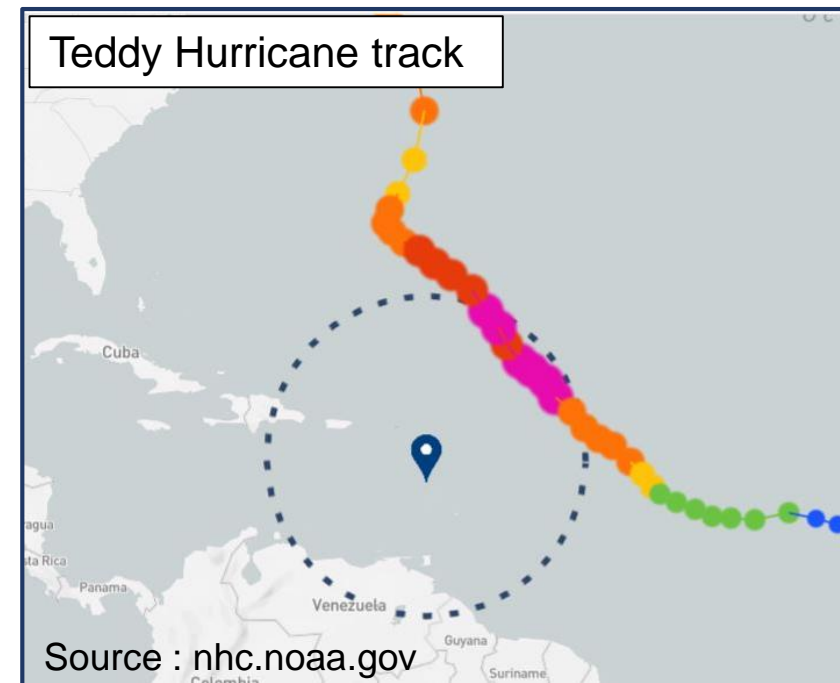
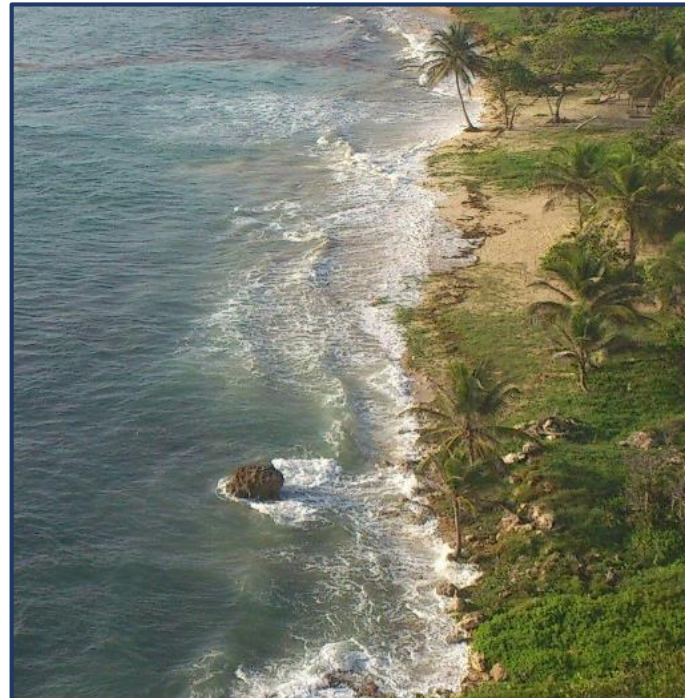
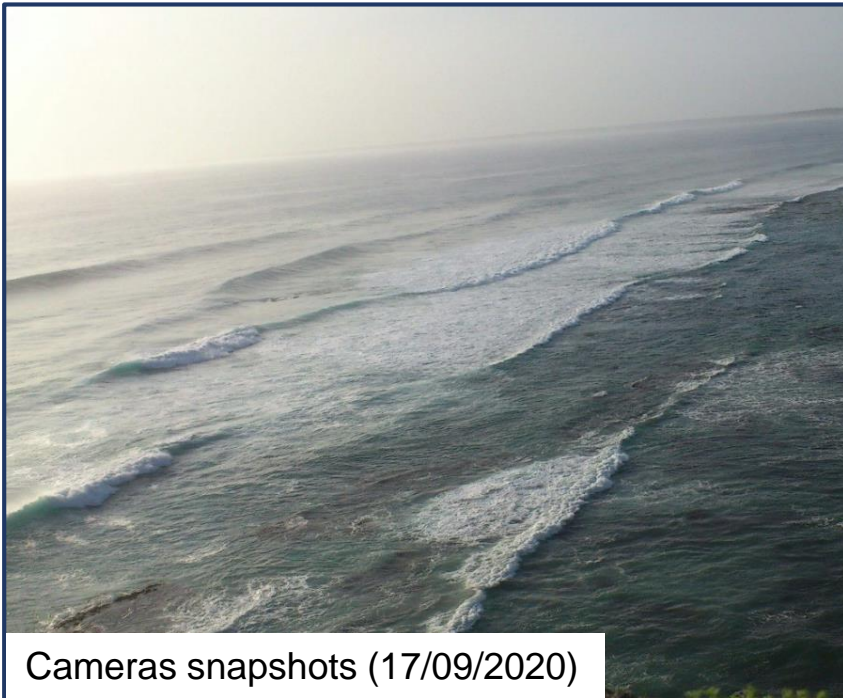
## Correlation between daily max. Runup and offshore hydrodynamic



# Results : Short-term modelling

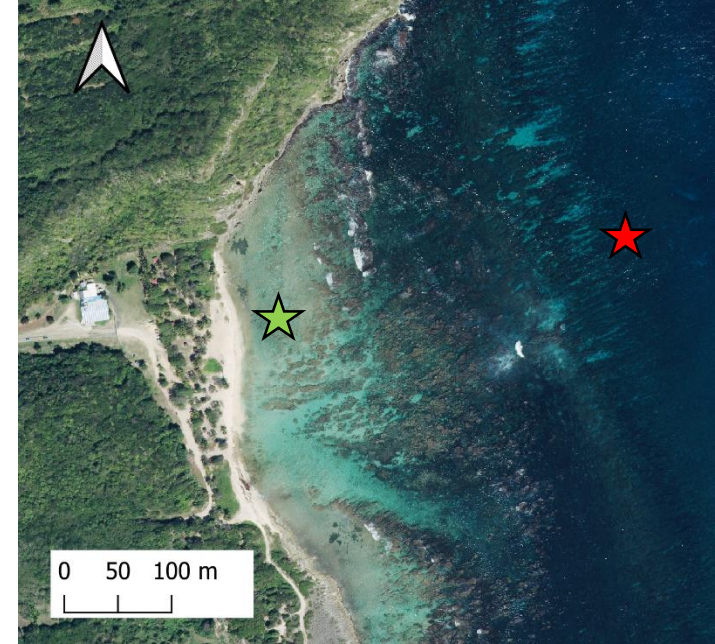
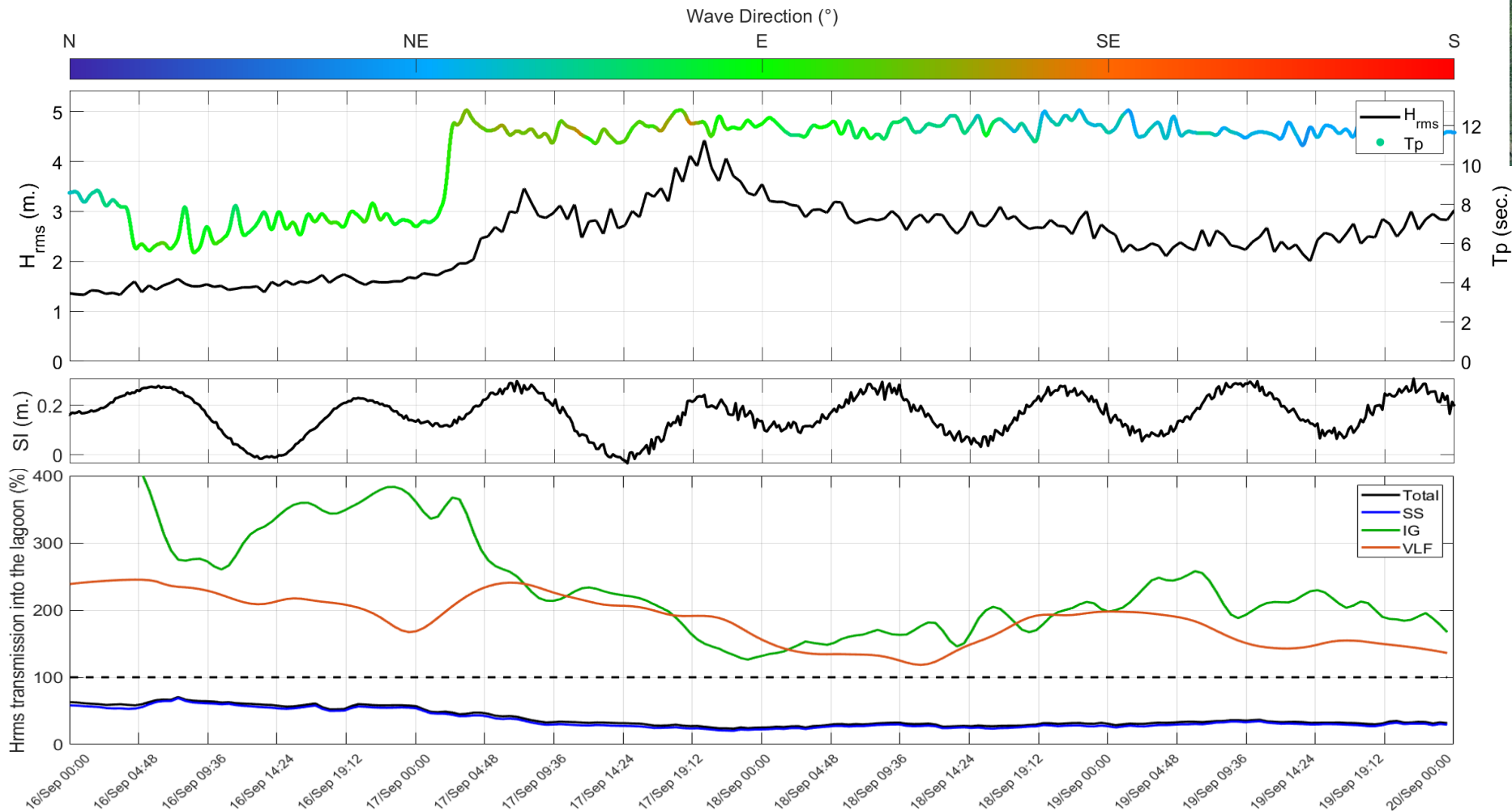
## Zoom on major hurricane Teddy (cat. 4) :

- Peak waves in Guadeloupe:
  - Date : 17-18/09/2020
  - Distance : 800 km
  - Hs : 4.5 m Tp: 14 sec
- Massive swash observed on cameras

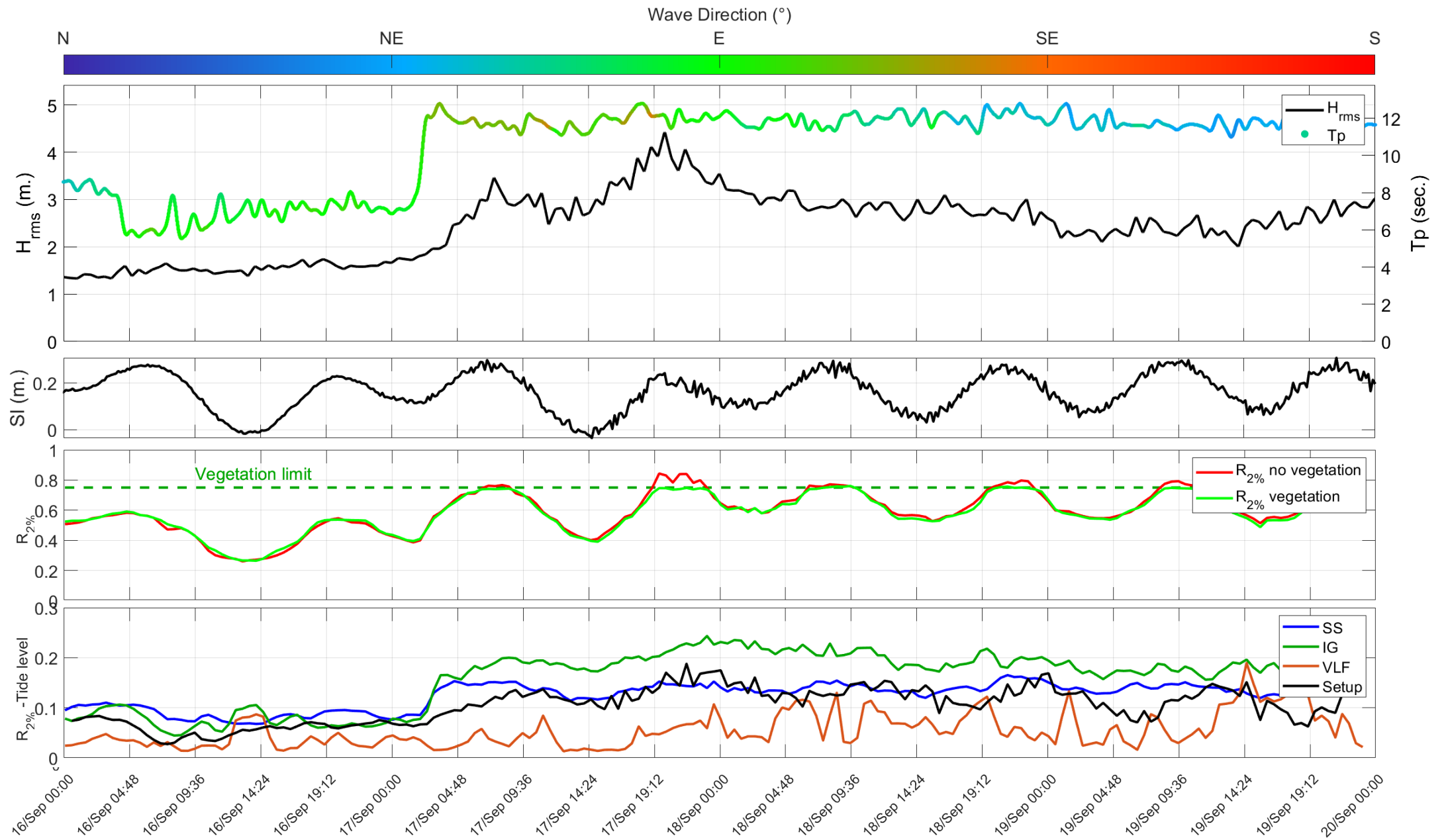


# Results : Short-term modelling

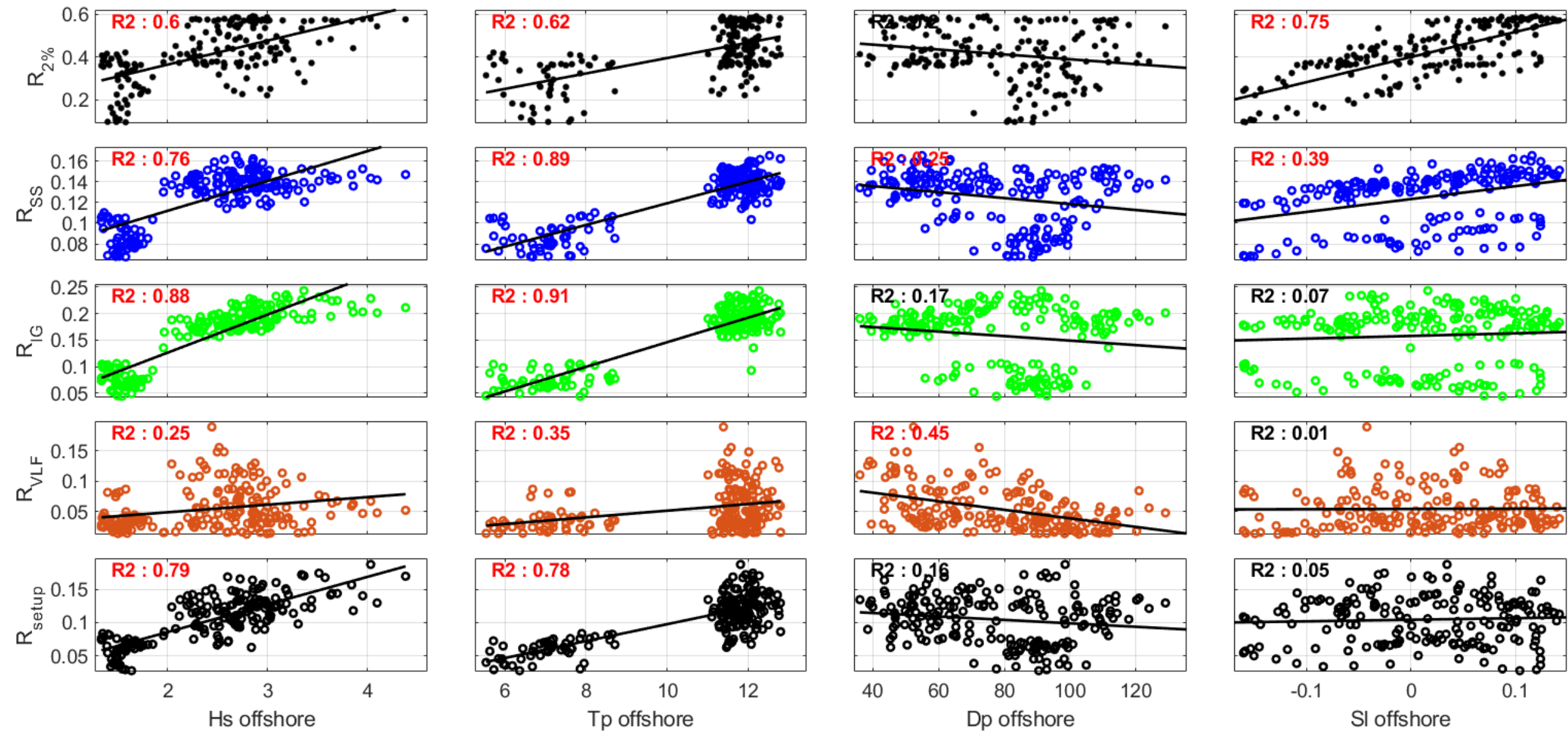
- SS waves attenuation by the reef
- IG and VLF waves amplification by the reef
- Between 30 to 70 % of incident wave height is reduced



# Results : Short-term modelling



# Results : Short-term modelling



# Conclusions & Perspectives

## Observations

- Runup mostly correlated to Sea level on the mid/long-term
- Low Correlation with Hs and Tp excepted during storms
- Upperbeach vegetation seems to reduce maximum runup
- Extrem runup = High sea level + strong swell

## Numerical modelling during storm :

- Between 30 to 70 % of the incident wave height is dissipated by the reef
- Sea level dominates Runup signal globally
- IG waves are the second most important parameter on runup
- Upperbeach vegetation reduce maximum runup

## Perspectives :

- Numerical modelling sensitivity test with varying reef and vegetation properties in order to quantify the benefits (loss) of ecosystem state of health changes.
- Modelling probabilistic events : 5,10,100... years return storms +sea level rise scenarios (IPCC)



Vegetation enclosure at Anse-Maurice