



**HAL**  
open science

# Depositional Environment and Genesis of the Nabeba Banded Iron Formation (BIF) in the Ivindo Basement Complex, Republic of the Congo: Perspective from Whole-Rock and Magnetite Geochemistry

Chester Gatsé Ebotehouna, Yuling Xie, Kofi Adomako-Ansah, Blandine Gourcerol, Yunwei Qu

## ► To cite this version:

Chester Gatsé Ebotehouna, Yuling Xie, Kofi Adomako-Ansah, Blandine Gourcerol, Yunwei Qu. Depositional Environment and Genesis of the Nabeba Banded Iron Formation (BIF) in the Ivindo Basement Complex, Republic of the Congo: Perspective from Whole-Rock and Magnetite Geochemistry. *Minerals*, 2021, 11 (6), pp.579. 10.3390/min11060579 . hal-03538671

**HAL Id: hal-03538671**

**<https://brgm.hal.science/hal-03538671v1>**

Submitted on 5 Dec 2022

**HAL** is a multi-disciplinary open access archive for the deposit and dissemination of scientific research documents, whether they are published or not. The documents may come from teaching and research institutions in France or abroad, or from public or private research centers.

L'archive ouverte pluridisciplinaire **HAL**, est destinée au dépôt et à la diffusion de documents scientifiques de niveau recherche, publiés ou non, émanant des établissements d'enseignement et de recherche français ou étrangers, des laboratoires publics ou privés.



Distributed under a Creative Commons Attribution 4.0 International License

## Article

# Depositional Environment and Genesis of the Nabeba Banded Iron Formation (BIF) in the Ivindo Basement Complex, Republic of the Congo: Perspective from Whole-Rock and Magnetite Geochemistry

Chesther Gatsé Ebotelhouna <sup>1,\*</sup> , Yuling Xie <sup>1</sup> , Kofi Adomako-Ansah <sup>2</sup>, Blandine Gourcerol <sup>3</sup> and Yunwei Qu <sup>1</sup>

<sup>1</sup> School of Civil and Environmental Engineering, University of Science and Technology Beijing, Beijing 100083, China; yulingxie@263.net (Y.X.); yunwei.qu@xs.ustb.edu.cn (Y.Q.)

<sup>2</sup> Geological Engineering Department, University of Mines and Technology, Tarkwa P.O. Box 237, Ghana; kadamakoansah@umat.edu.gh

<sup>3</sup> French Geological Survey, BRGM, F-45060 Orléans, France; b.gourcerol@brgm.fr

\* Correspondence: gatsechesther@gmail.com or b20160568@xs.ustb.edu.cn

**Abstract:** The Nabeba high-grade iron deposit (Republic of the Congo) is hosted by banded iron formation (BIF) in the Ivindo Basement Complex, which lies in the northwestern part of the Congo Craton. The Nabeba BIF is intercalated with chlorite-sericite-quartz schist and comprises two facies (oxide and a carbonate-oxide). In this study, whole-rock and LA-ICP-MS magnetite geochemistry of the BIF was reported. Magnetite samples from both BIF facies had fairly similar trace element compositions except for the rare earth element plus yttrium (REE + Y) distribution patterns. The high V, Ni, Cr, and Mg contents of the magnetite in the Nabeba BIF could be ascribed to the involvement of external medium-high temperature hydrothermal fluids during their deposition in relatively reduced environment. The Post-Archean Australian Shale (PAAS)-normalized REY patterns of the Nabeba BIF magnetite were characterized by LREE depletion coupled with varying La and positive Eu anomalies. Processing of the information gathered from the geochemical signatures of magnetite and the whole-rock BIF suggested that the Nabeba BIF was formed by the mixing of predominantly anoxic seawater (99.9%) with 0.1% of high-temperature (>250 °C) hydrothermal vent fluids, similar to the formation mechanism of many Archean Algoma-type BIFs reported elsewhere in the world.

**Keywords:** magnetite chemistry; banded iron formation (BIF); Nabeba deposit; Ivindo basement complex; Republic of the Congo



**Citation:** Gatsé Ebotelhouna, C.; Xie, Y.; Adomako-Ansah, K.; Gourcerol, B.; Qu, Y. Depositional Environment and Genesis of the Nabeba Banded Iron Formation (BIF) in the Ivindo Basement Complex, Republic of the Congo: Perspective from Whole-Rock and Magnetite Geochemistry. *Minerals* **2021**, *11*, 579. <https://doi.org/10.3390/min11060579>

Academic Editor: M. Pilar Mata

Received: 12 April 2021

Accepted: 25 May 2021

Published: 29 May 2021

**Publisher's Note:** MDPI stays neutral with regard to jurisdictional claims in published maps and institutional affiliations.



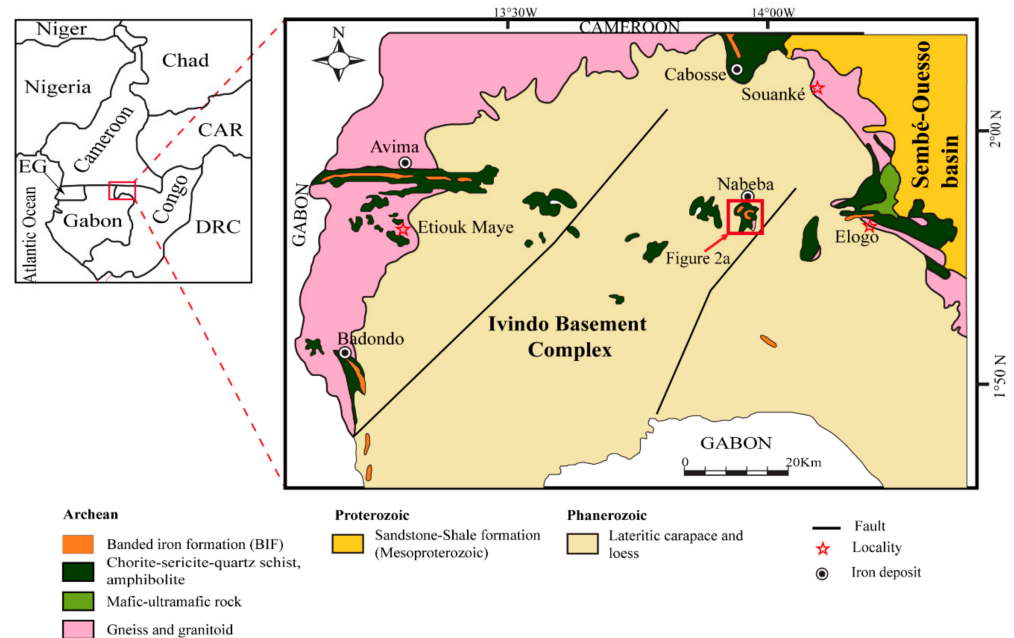
**Copyright:** © 2021 by the authors. Licensee MDPI, Basel, Switzerland. This article is an open access article distributed under the terms and conditions of the Creative Commons Attribution (CC BY) license (<https://creativecommons.org/licenses/by/4.0/>).

## 1. Introduction

Algoma-type banded iron formations (BIFs) are increasingly explored and studied due to their rich endowments of iron (e.g., the Águas Claras and Pico Mine, Brazil; [1]) and gold (e.g., the Meliadine, Canada; [2]). In addition to their economic significance, BIFs have immense scientific value in understanding the Precambrian hydrosphere, biosphere, and atmosphere [3–7]. BIFs are chemical sedimentary rocks by definition and comprise alternating chert- and iron-rich ( $\geq 15\%$  Fe) layers [8–10]. These rocks are associated with Archean to Paleoproterozoic volcano-sedimentary sequences in greenstone belts associated with back-arc or intra-arc basin setting.

The northwestern margin of the Congo Craton extends from Cameroon southward through northern Gabon to the northwestern Republic of the Congo (R.C.), where various BIF-hosted iron deposits were discovered within the Precambrian terranes and the narrow greenstone belts around them [11–15]. The BIFs in Central Africa and the Congo are much less studied than those in Cameroon. In the northwestern Congo, recent exploration by the Core Mining Ltd., Equatorial Resources, and Congo Iron SA discovered several high-grade iron deposits, including Avima, Badondo, Nabeba, and Cabosse [16] (Figure 1). Very little

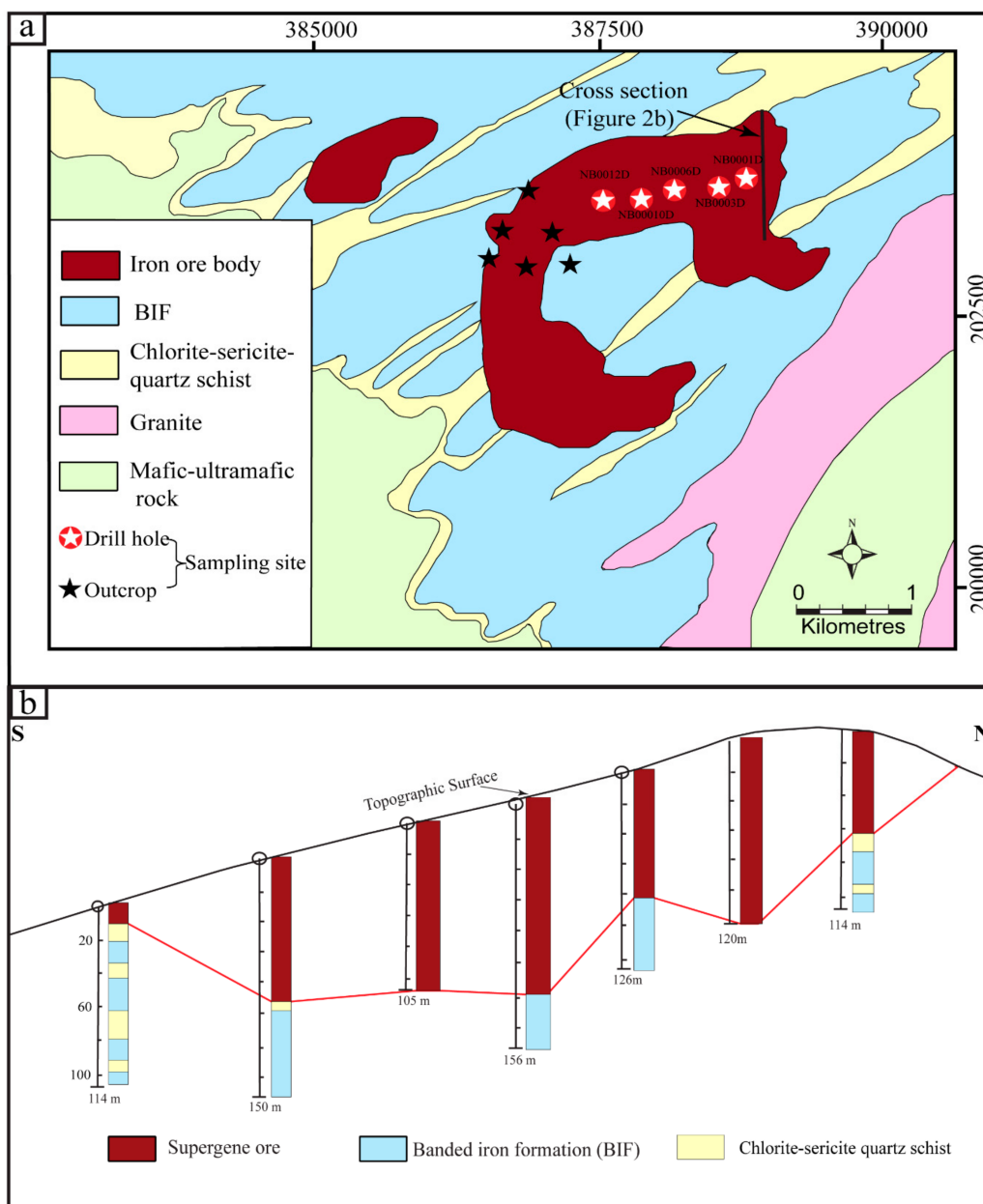
is known about these BIF-hosted iron deposits, including the BIF depositional environment prior to ore enrichment [16–18]. Among these iron deposits, the Nabeba iron deposit is renowned for its strong economic potential, which attracts much attention.



**Figure 1.** Geological setting of the northwestern Republic of the Congo (modified from [19]). Inset map: Sketched map showing the national border in Central Africa. Abbreviations: CAR, Central African Republic; DRC, Democratic Republic of the Congo; EG, Equatorial Guinea.

The Precambrian Nabeba BIF is associated with mafic and felsic volcanic rocks (Figure 2a). Their lithological associations are similar to those of the well-studied Algoma-type Musselwhite and Meliadine BIFs. Recent studies on Algoma-type BIFs demonstrated that their depositional settings [2,20–24] involve submarine hydrothermal activity and a seawater component with varying detrital/volcaniclastic input. Despite being influenced by post-depositional processes, such as regional greenschist-/amphibolite-facies metamorphism, mineral geochemistry from Si-rich and Fe-rich layers can be used to constrain petrogenesis and depositional environment [2,25–33], especially with the recent advances in the laser ablation-inductively coupled plasma-mass spectrometry (LA-ICP-MS) analytical technology [28].

This study focuses on the BIF that hosts the Nabeba iron deposit—the deposit with the highest iron ore potential amongst the other BIFs in the Ivindo Basement Complex (IBC) of the Republic of Congo (Figure 1)—but its host BIF depositional environment and genesis are not well-studied. In this paper, we reported BIF petrographic features and whole-rock geochemical and LA-ICP-MS magnetite trace element compositions. Based on comparisons with well-studied BIFs around the world, we discussed the controlling factors on the magnetite trace element characteristics and the implications that all of these data have for the BIF depositional environment and petrogenesis at Nabeba.



**Figure 2.** (a) Geologic map of the Nabeba Fe deposit modified from [16]), showing the sampling site; (b) geological profile of the deposit. NB0001D, NB0004D, and NB0012D are diamond drill-hole number at Nabeba.

## 2. Regional Geology

Due to the inaccessibility of the region to conduct regionally extensive geological works and the lack of extensive outcrops, the regional geology reported in this paper was based on the few outcrops that we encountered at the company site and environs, the company records on exposures during its geological exploration expeditions, and the scant literature available on the Nabeba area (e.g., the publication of Meloux et al. [34]). In NW Congo, a granitoid massif, which is known as the Chaillu Massif [35] and an equivalent of the IBC, contains two generations of granitoids with mainly N-S foliation. Greenstone belts (including BIF) and schist are found in several locations within the Chaillu Massif, including the Mayoko and the Zanaga Regions in southern Congo [36] and at Mt. Nabeba. To the east of Mt. Nabeba, the margins of the Chaillu Massif are overlain by low-grade metamorphic rocks of the Proterozoic Sembé-Ouessou Group (i.e., a sedimentary sequence

of sandstone-shale and diamictite [19,34,35,37] (Figure 1). Cenozoic sediments of the Congo Basin cover much of the area, including the surroundings of Mt. Nabeba.

The Precambrian Nabeba iron deposit in northwestern Congo (Figure 1) is geologically located in the Archean IBC. The IBC comprises mainly two types of rock formation, namely supracrustal and crystalline rocks (Figure 1; [19,34,35,37]). The supracrustal rocks are mainly volcano-sedimentary in origin and comprise metamorphosed, EW-trending greenstone belts (commonly chlorite-sericite-quartz schists and amphibolite) and banded iron formations with mafic and/or ultramafic intrusive rocks [34]. The Archean greenstone belts narrowly frame the crystalline rocks along regional NE-trending structural corridors. The crystalline rocks generally comprise, as elsewhere in the Congo Craton, cataclased granites, orthogneiss, and migmatites. These rocks constitute the greater part of the basement (80% to 90%). However, the most widespread lithological assemblages are calc-alkaline granites, biotite, green hornblende granodiorites, and, more locally, quartz meta-diorites or metagabbros [34].

In the Souanké area, which is at the northeastern margin of the IBC, the greenstone belts and the amphibolite associated with banded iron formation (Figure 2a) are thought to be the remnants of greenstone belts, including those at Nabeba [34]. The good exposures in the Souanké area reveal intrusions of Archean TTG suites and potassic granite in the amphibolite, suggesting that the Amphibolite and the BIF are at least of Precambrian age [38,39].

### 3. Deposit Geology

The principal rock types that represent the volcano-sedimentary units in the structurally complex Nabeba project area are BIF and chlorite-sericite-quartz schists [40]. The Nabeba rocks are metamorphosed to the amphibolite facies and strongly deformed [16].

Structural geological studies revealed at least two major deformation events ( $D_1$  and  $D_2$ ) [16].  $D_1$  consists of the NE-trending  $S_1$  foliation and the  $F_1$  north-plunging isoclinal fold, while  $D_2$  formed regional N-S-trending folds ( $F_2$ ) and extensive E-W-trending  $S_2$  shearing [16]. The Nabeba BIF was suggested to be structurally dismembered and fan-shaped, which was confined by NE-trending thrust/reverse faults. These faults converged into an E-W trending regional shear zone north of Nabeba [16].

The Nabeba BIF consists of alternating thin iron oxide-rich and cherty bands with minor iron carbonate minerals, such as siderite and ferroan-magnesite. The iron oxide minerals comprise hematite, magnetite, and martite. The BIF is crosscut by quartz veins of varying thicknesses [16].

The Nabeba BIF contains the Nabeba iron deposit: an inferred resource of 436.3 Mt at a grade of 62.3% Fe (Figure 2a; [16]). Three mineralization styles are present: (1) supergene goethite-hematite ore (>62.3% Fe); (2) itabirite-type mineralization (i.e., hematite-enriched BIF; 34% Fe) (Figure 2b); (3) hypogene iron ore (45% to 55% Fe) [16].

### 4. Sampling and Analytical Methods

Thirty-three representative BIF samples were collected from drill cores (Figure 3) and outcrops (Figure 4a,b) for petrographic observations, from which ten samples were selected for whole-rock geochemical analysis and five for in situ LA-ICP-MS magnetite trace element analyses (Table 1).

These samples contain iron oxide bands with dominantly anhedral magnetite grains and rare hematite. Polished thin sections were prepared and examined using both transmitted and reflected light microscopy along with scanning electron microscopy (SEM) in order to select suitable geochemical analysis site with minimal intergranular matrix or mineral (e.g., quartz, siderite, monazite) inclusions.

Whole-rock major and trace (including rare earth element (REE)) analyses were performed at the ALS Laboratory (Guangzhou, China). The samples were crushed and powdered in an agate mill. Major elements were analyzed with X-ray fluorescence (XRF)

spectroscopy after the powders were fused with lithium borate into glass disks. The analytical uncertainties varied from 1% to 0.04%.

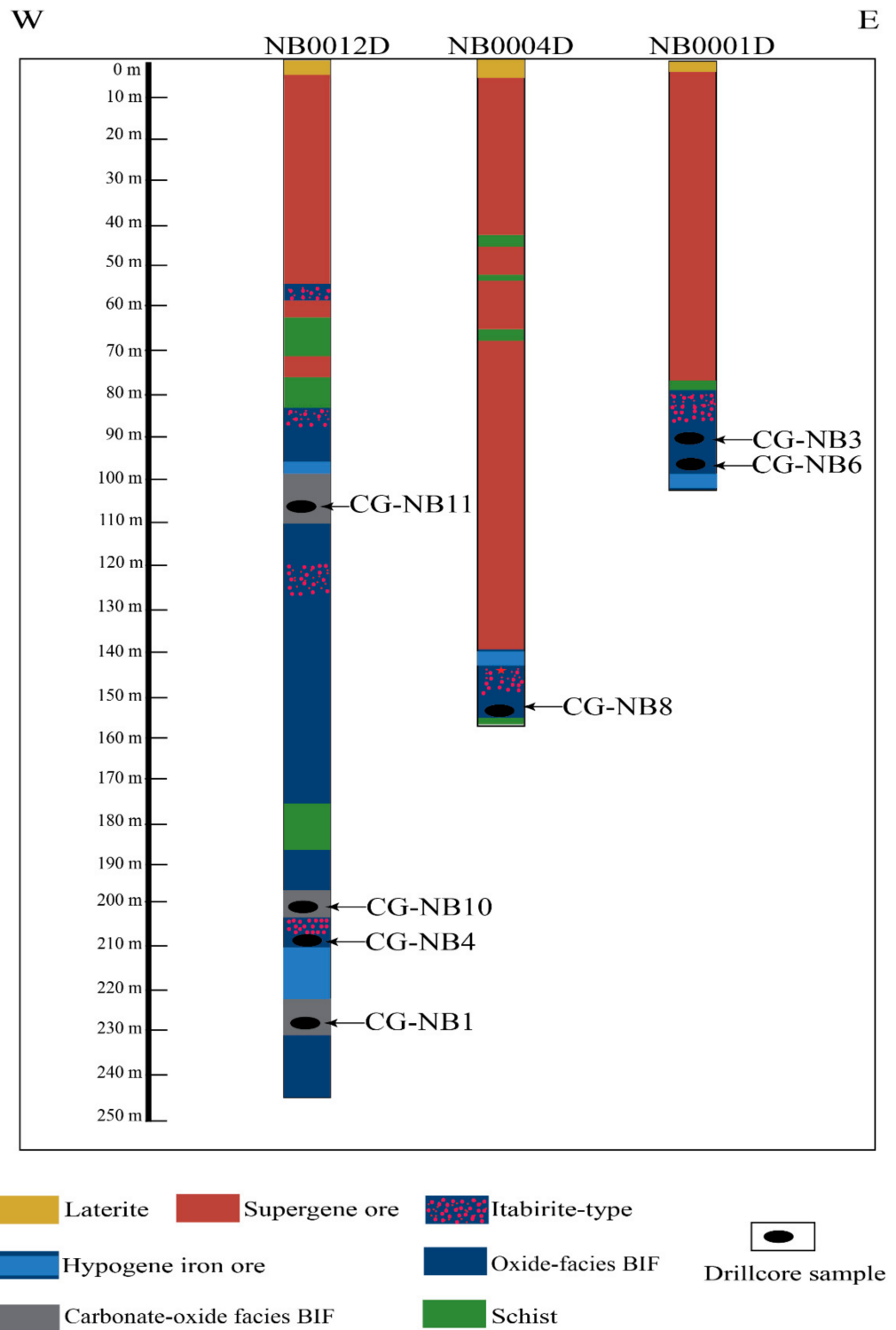
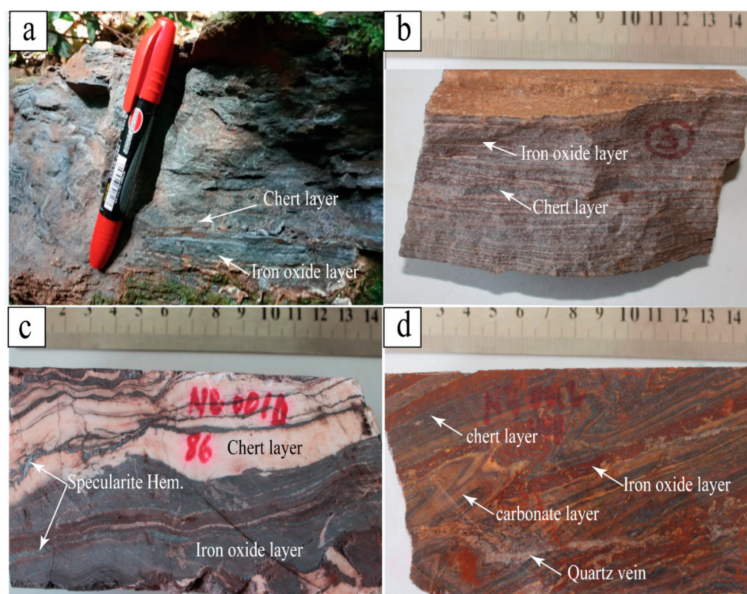


Figure 3. Drill-hole stratigraphic columns at the Nabeba BIF deposit.

Table 1. Samples collected from the Nabeba iron deposit.

Sample Type	N°	Sample Name	Location	Coordinates		Depth (m)	BIF Facies	Texture	Major Mineral Assemblage
				East	North				
BIF (Drill Core)	1	CG-NB 1	NBDD012	387521	203459	224	Carbonate-oxide	Fine banded, brown, grey, and black alternating bands	Magnetite + siderite + quartz
	2	CG-NB 2	NBDD001D	388900	203208	86	Oxide	Banded, alternation of white, brown, and grey	Magnetite + quartz
	3	CG-NB 3	NBDD001D	388900	203208	90	Oxide	Fine banded, alternation of white, brown, and grey	Magnetite + quartz + hematite
	4	CG-NB 4	NBDD012D	387521	203459	215	Oxide	Banded, cut by quartz veins	Magnetite + quartz
	5	CG-NB 6	NBDD001D	388900	203208	96	Oxide	Fine banded, grey, brown, and white fold bands	Magnetite + quartz + hematite
	6	CG-NB 7	NBDD004D	388300	203588	156	Oxide	Banded, brown, and white	Magnetite + quartz + hematite
	7	CG-NB 8	NBDD004	388300	203588	185	Oxide	Banded, brown, and white, cut by quartz veins	Magnetite + quartz
	8	CG-NB 9	NBDD0012	387521	203459	220	Oxide	Folded banded, brownish, cut by quartz veins	Magnetite + quartz
	9	CG-NB10	NBDD0012	387521	203459	208	Carbonate-oxide	Fines banded, gray to brown, crosscutting veins	Magnetite + quartz + siderite
	10	CG-NB11	NBDD0012	387521	203459	98	Carbonate-oxide	Fines banded, gray to brown, and white alternating bands	Magnetite + quartz + siderite + ferroan-magnesite
BIF (Outcrop)	11	CG-C2	Outcrop	386688	202204		Oxide	Fine banded, grey, brown, and white alternating bands	Magnetite + quartz + hematite + martite
	12	CG-C3	Outcrop	386221	202029		Oxide	Brown and white alternating bands	Magnetite + quartz + hematite + martite
	13	CG-C4	Outcrop	386711	202232		Carbonate-oxide	Banded, brown, and grey	Magnetite + quartz + hematite + ferroan-dolomite
	14	CG-C6	Outcrop	387214	202232		Carbonate-oxide	Fine banded, brown, grey, and white rhythms	Magnetite + quartz + hematite + ferroan-dolomite
	15	CG-C12	Outcrop	387176	202145		Oxide	Banded, grey to brown slightly weathered, foliated, dominated by hematite bands	Magnetite + hematite + martite + quartz
	16	CG-C14	Outcrop	386588	202279		Carbonate-oxide	Banded, light grey to grey, slightly weathered, presence of sugary quartz in the chert bands	Magnetite + quartz + hematite + ferroan-dolomite
	17	CG-C21	Outcrop	386520	202354		Oxide	Fine banded, brown, grey, and white rhythms	Magnetite + quartz + hematite + marite
	18	CG-C23	Outcrop	386547	202390		Oxide	Fine banded, grey slightly weathered, foliated, dominated by hematite-goethite bands	Magnetite + quartz + hematite
	19	CG-C25	Outcrop	386720	202287		Oxide	Banded, grey slightly weathered, foliated, dominated by hematite-goethite bands, presence of quartz veins cutting the bands	Magnetite + martite + quartz



**Figure 4.** Field photos of (a) BIF outcrop at Nabeba, showing minor folding of the alternating hematite and chert layers; (b) oxide facies-BIF, showing the fine alternating layers of chert and iron oxides; (c) oxide facies-BIF, showing the fine alternating layers of chert, specularite, and magnetite; (d) slightly-folded carbonate-oxide facies-BIF, showing the alternating carbonate, magnetite, and chert layers.

Trace element compositions were analyzed with solution ICP-MS, with approximately 2% to 5% analytical uncertainties. The sample powder was mixed with distilled HF and HNO<sub>3</sub> acids in Teflon screw-up capsules at 140 °C and then dried and digested with HNO<sub>3</sub> acid at 190 °C for 48 h in an oven. The solution was dried again and digested with HNO<sub>3</sub> acid at 150 °C for 12 h. A solution with 800 ng/g rhodium was added into the dissolved samples as an internal standard. The precision for trace elements and REEs varies between 0.1% and 0.5%. For REE-Y, the detection limits were 0.01 ppm. Data quality was monitored by analyzing various standards between unknown samples.

LA-ICP-MS trace element analysis was performed on selected magnetite grains with an Agilent 7900 quadrupole ICP-MS (Agilent Technologies, Santa Clara, CA, USA) attached to a Photon Machines Analyte (Photon-Machines INC., Redmond, WA, USA) HE 193 nm Excimer laser ablation system equipped with a SQUID signal smoothing (Applied Spectra, INC., West Sacramento, CA, USA) device. The analysis was performed at the In-situ Mineral Geochemistry Laboratory, Ore Deposit and Exploration Centre (ODEC), Hefei University of Technology (Anhui Province, China). Sample ablation was done using He as a carrier gas, which mixed with the Ar make-up gas before entering in the ICP. The 30 µm laser spot and the 8 Hz frequency were maintained throughout the analysis. Analysis of all grains was done using laser energy at 3 J/cm<sup>2</sup>. Each analysis comprised a gas blank (laser-off) background measurement of 20 s, followed by a 40 s laser-on sample signal measurement. Calibration was done using multiple reference materials (BCR-2G, SRM 612, and SRM 610), and <sup>57</sup>Fe was used as an internal standard [41]. The ICPMSDataCal program was used for data processing, following the method described by Liu et al. [42]. This software is generally used for the integrated selection of contextual and for signal analysis, quantitative calibration, and correction of time drift. Fifty-four isotopes were measured. Forty-seven sample analysis spots were bracketed by analysis of the standard (e.g., BCR-2G, SRM610, and SSRM612). In the study, the detection limits were significantly lower than the rare earth element (REE) contents of our magnetite samples (Tables S1 and S2).

The Post-Archean Australian Shale (PAAS; [43], subscript “SN”) was used to normalize the REE+Y concentrations to minimize the influence of potential terrigenous input. The PAAS-normalized La (La<sub>SN</sub>) anomalies were calculated by  $(La/La^*)_{SN} = (La/Pr)_{SN}$  after



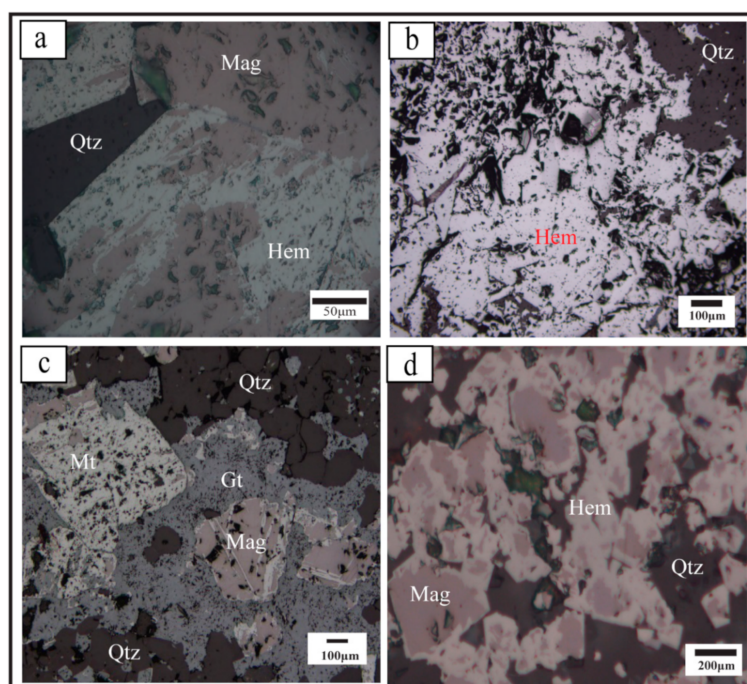
Bau et al. [44], because these REEs were taken as reference elements due to their coherent behavior during geochemical processes and predictable fractionation [45]. The anomalous abundance of  $Ce_{SN}$ ,  $Eu_{SN}$ ,  $Gd_{SN}$ , and  $Pr_{SN}$  were calculated as suggested by Bau and Dulski [3]:  $(Ce/Ce^*)_{SN} = Ce_{SN}/(0.5La_{SN} + 0.5Pr_{SN})$ ,  $(Eu/Eu^*)_{SN} = Eu_{SN}/(0.67Sm_{SN} + 0.33Tb_{SN})$ ,  $(Gd/Gd^*)_{SN} = Gd_{SN}/(0.33Sm_{SN} + 0.67Tb_{SN})$ , and  $(Pr/Pr^*)_{SN} = Pr_{SN}/(0.5Ce_{SN} + 0.5Nd_{SN})$ .

## 5. Results

### 5.1. BIF Petrography

#### 5.1.1. Oxide-Facies-BIF

The oxide-facies-BIF was fine- to coarse-grained and comprised alternating whitish chert- and dark-brown iron oxide-bands, which were <1 to 1.5 mm thick (Figure 4b,c). The oxide-facies-BIF consisted of quartz, magnetite, hematite, and martite, and minor fluorapatite and sulfides. Quartz occurred as isolated anhedral-euhedral fine grains (<45–400  $\mu\text{m}$ ) or formed granular aggregates 150 to >200  $\mu\text{m}$  in size (Figure 5a,b). It locally displayed undulose extinction due to deformation. Magnetite appeared as anhedral crystals or aggregates of 25–550  $\mu\text{m}$  in size (Figure 5a–d). Magnetite was partially replaced by hematite or as relicts in hematite grains (Figure 5d). Many magnetite grains contained quartz inclusions. Hematite occurred as massive anhedral aggregates of 25–300  $\mu\text{m}$  in size (Figure 5c,d) and was commonly formed as pseudomorphic replacement of magnetite (Figure 5a). Martite occurred as granular mass with grain size of 50–300  $\mu\text{m}$  (Figure 5c).

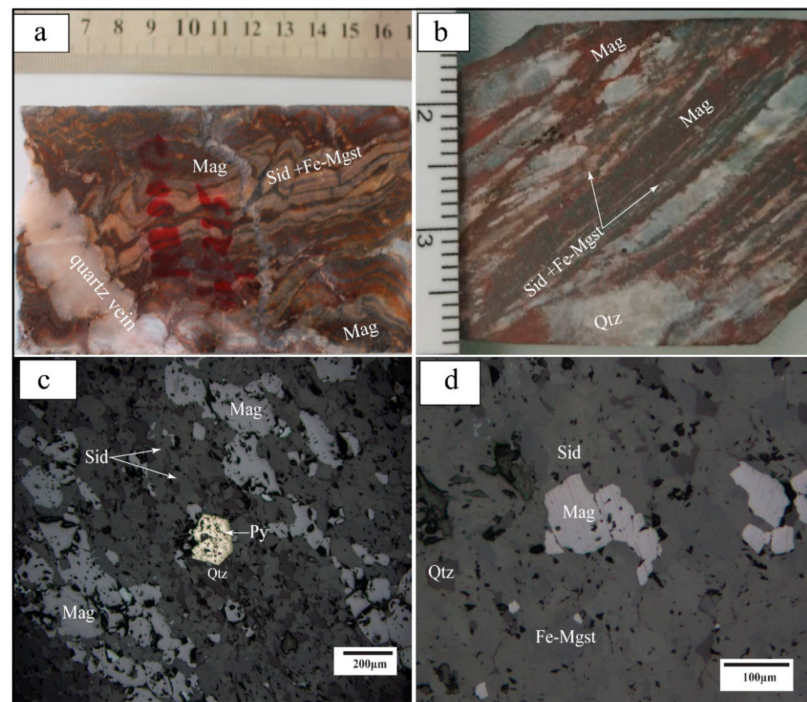


**Figure 5.** Photomicrographs of the Nabeba oxide facies-BIF: (a) anhedral magnetite partially replaced by hematite (sample CG-C2, reflected-light); (b) hematite, which has completely replaced magnetite (sample CG-C2, reflected-light); (c) granoblastic martite in magnetite pseudomorph with interstitial goethite (sample CG-C5, reflected-light); (d) subhedral-anhedral magnetite partially replaced by hematite at grain boundaries (sample CG-C23, reflected-light). Abbreviations: Gt, goethite; Hem, hematite; Mag, magnetite; Mt, martite; Qtz, quartz.

#### 5.1.2. Carbonate-Oxide Facies-BIF

The Nabeba carbonate-oxide facies-BIF was dark-brown and fine- to coarse-grained (Figures 4d and 6a,b). The sample hand-specimens displayed alternating bands (<1 to 4 mm thick) of chert and ferric minerals (siderite, magnetite, and ferroan-magnesite) (Figure 6a,b). Under the microscope, the Nabeba carbonate-oxide facies-BIF contained accessory apatite,

K-feldspar, chlorite, monazite, galena, sphalerite, and sulfides (pyrite, arsenopyrite, and chalcopyrite) (Figure 6c,d).



**Figure 6.** Core sample photos (a,b) and photomicrographs of the carbonate-oxide facies-BIF (c,d): (a) folded micro-banding of alternating quartz and ferric minerals (magnetite, siderite, and ferroan-magnesite) cut by a quartz vein (sample CG-NB10); (b) alternating thick quartz-rich and ferric mineral-rich (magnetite, siderite, and ferroan-magnesite) layers (sample CG-NB10); (c) euhedral pyrite inclusions in iron oxide-rich layer (sample CG-NB1). Note the lineation of magnetite, siderite, and quartz; (d) subhedral magnetite in the carbonate layers, mostly dominated by siderite (sample CG-NB1). Abbreviations: Fe-Mgst: ferroan-magnesite; Mag: magnetite; Py: pyrite; Qtz: quartz; Sid: siderite.

Magnetite, the dominant iron-bearing ferric mineral, was euhedral-subhedral and <math>50\text{--}600\ \mu\text{m}</math> in size. Magnetite formed massive aggregates or occurred as minor inclusions in chert- or iron carbonate-rich layers (Figure 6b). Rare fine quartz and monazite inclusions were found in the massive magnetite aggregates (Figure 6c).

Siderite was often associated with ferroan-magnesite, and both minerals appeared as massive aggregates in the continuous iron carbonate-rich bands (Figure 6a,b). Siderite was often associated with magnetite or quartz (Figure 6c). Anhedronal ferroan-magnesite occurred as micro-laminae in a siderite groundmass and appeared as an alteration product of siderite.

Quartz was anhedral and formed micro-laminae between magnetite-rich and carbonate-rich laminae (Figure 6b). Quartz displayed undulose extinction and was often associated with pyrite, chlorite, or ferro-microcline as inclusions in granoblastic siderite (Figure 6c).

## 5.2. Whole-Rock Geochemistry

### 5.2.1. Major Elements

Major element analyses of the representative Nabebe BIF were performed on oxide- and carbonate-oxide-facies-BIF samples (six from outcrop and four from drill core) (Table 1). The results showed that the BIF contained mainly  $\text{Fe}_2\text{O}_3$  and  $\text{SiO}_2$ , with a weak positive correlation between them ( $r = 0.17$  and  $0.27$  for oxide-facies and carbonate-oxide-facies-BIF, respectively; Tables 2–4).

**Table 2.** Major element oxide composition (wt.%) and ratios of the Nababa BIF.

Sample Name	Oxide Facies-BIF						Carbonate-Oxide Facies-BIF			
	CG-NB3	CG-NB6	CG-C2	CG-C21	CG-C23-1	CG-C23-2	CG-C25	CG-NB1	CG-NB10	CG-C6
SiO <sub>2</sub>	57.40	68.37	43.74	48.05	46.43	45.47	46.25	41.55	37.23	40.26
TiO <sub>2</sub>	0.01	<0.01	<0.01	<0.01	<0.01	<0.01	<0.01	<0.01	0.02	<0.01
Al <sub>2</sub> O <sub>3</sub>	0.36	0.05	0.06	0.09	0.11	0.07	0.03	0.18	0.48	0.06
TFe <sub>2</sub> O <sub>3</sub>	41.30	30.71	53.55	48.27	48.95	50.41	48.92	44.86	44.24	55.63
Cr <sub>2</sub> O <sub>3</sub>	<0.01	<0.01	<0.01	<0.01	<0.01	<0.01	0.01	<0.01	<0.01	<0.01
MnO	0.01	0.01	0.01	0.01	0.11	0.12	<0.01	0.44	0.30	0.15
MgO	0.02	0.02	0.03	0.03	0.08	0.08	0.03	1.57	1.99	0.18
CaO	0.01	0.01	0.01	0.02	0.02	0.02	0.03	0.11	0.18	0.01
Na <sub>2</sub> O	<0.01	<0.01	<0.01	<0.01	<0.01	<0.01	<0.01	<0.01	<0.01	<0.01
K <sub>2</sub> O	0.02	<0.01	<0.01	<0.01	0.02	0.01	<0.01	<0.01	<0.01	<0.01
P <sub>2</sub> O <sub>5</sub>	0.02	0.01	0.20	0.04	0.02	0.02	0.03	0.01	0.05	0.03
SO <sub>3</sub>	<0.01	<0.01	<0.01	0.02	0.02	0.02	0.04	0.22	0.01	0.07
LOI	0.14	0.26	1.72	2.72	3.52	3.18	3.94	11.17	14.95	3.00
<b>Total</b>	<b>99.15</b>	<b>99.18</b>	<b>97.60</b>	<b>96.53</b>	<b>95.76</b>	<b>96.22</b>	<b>95.34</b>	<b>88.94</b>	<b>84.50</b>	<b>96.39</b>
Fe <sub>2</sub> O <sub>3</sub> /Al <sub>2</sub> O <sub>3</sub>	114.72	614.20	892.50	536.33	445.00	720.14	1630.67	249.22	245.78	927.17
SiO <sub>2</sub> /Al <sub>2</sub> O <sub>3</sub>	159.44	1367.40	729.00	533.89	422.09	649.57	1541.67	230.83	77.56	671.00

**Table 3.** Pearson's correlation matrix for major element oxides of oxide-facies-BIF.

	SiO <sub>2</sub>	Al <sub>2</sub> O <sub>3</sub>	TFe <sub>2</sub> O <sub>3</sub>	MnO	MgO	CaO	K <sub>2</sub> O	P <sub>2</sub> O <sub>5</sub>	LOI
SiO <sub>2</sub>	1	-	-	-	-	-	-	-	-
Al <sub>2</sub> O <sub>3</sub>	-0.73630401	1	-	-	-	-	-	-	-
TFe <sub>2</sub> O <sub>3</sub>	0.17460635	-0.67069794	1	-	-	-	-	-	-
MnO	-0.69788362	0.54176046	-0.55797574	1	-	-	-	-	-
MgO	-0.79756851	0.88406025	-0.7198373	0.86809874	1	-	-	-	-
CaO	-0.74643832	0.93913917	-0.77845814	0.7593399	0.97445819	1	-	-	-
K <sub>2</sub> O	1	1	-1	-1	not	not	1	-	-
P <sub>2</sub> O <sub>5</sub>	-0.27770787	0.52483232	-0.11711327	-0.27348272	0.18820647	0.33746412	not	1	-
LOI	-0.76954675	0.90910882	-0.76268074	0.8279835	0.99066466	0.99334296	1	0.24325744	1

**Table 4.** Pearson's correlation matrix for major element oxides of carbonate-oxide facies BIF.

	SiO <sub>2</sub>	Al <sub>2</sub> O <sub>3</sub>	TFe <sub>2</sub> O <sub>3</sub>	MnO	MgO	CaO	P <sub>2</sub> O <sub>5</sub>	LOI 1000
SiO <sub>2</sub>	1	-	-	-	-	-	-	-
Al <sub>2</sub> O <sub>3</sub>	-0.83856602	1	-	-	-	-	-	-
TFe <sub>2</sub> O <sub>3</sub>	0.27337997	-0.75329361	1	-	-	-	-	-
MnO	0.27174874	0.29641895	-0.85141724	1	-	-	-	-
MgO	-0.43677971	0.85635354	-0.98470727	0.74702181	1	-	-	-
CaO	-0.60562169	0.94137984	-0.93100424	0.6012302	0.98035734	1	-	-
P <sub>2</sub> O <sub>5</sub>	-0.9740111	0.69337525	-0.0484031	-0.48266298	0.22167576	0.40964402	1	-
LOI 1000	-0.5167765	0.89976557	-0.96478375	0.68346967	0.99585639	0.99423114	0.30943453	1

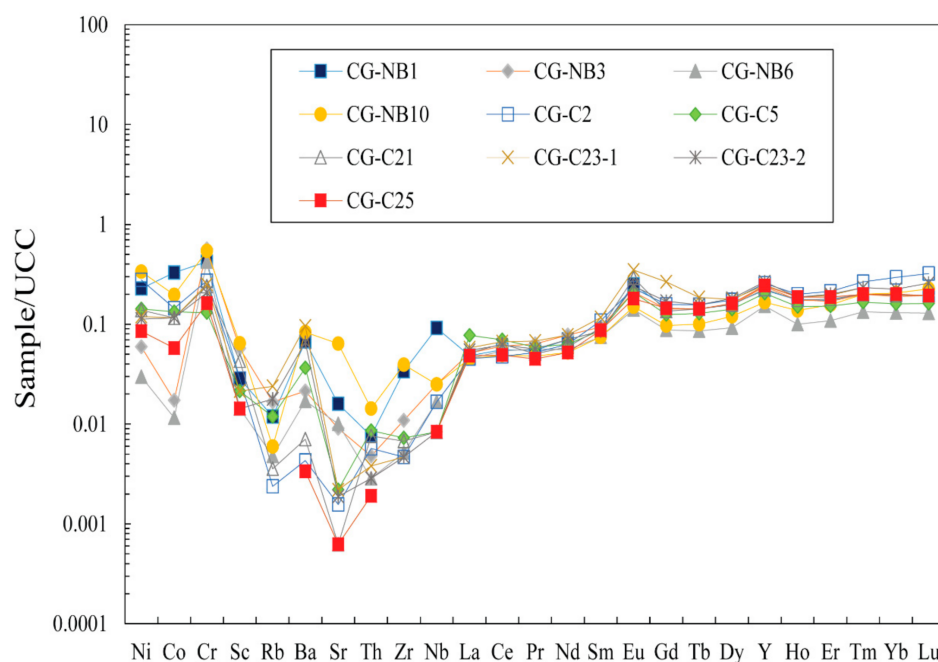
The oxide facies-BIF samples had SiO<sub>2</sub> = 43.74–68.37 wt.%, which was negatively correlated with MnO, MgO, Al<sub>2</sub>O<sub>3</sub>, CaO, and P<sub>2</sub>O<sub>5</sub>. Fe<sub>2</sub>O<sub>3</sub> (30.71–55.63 wt.%) was the dominant oxide and was negatively correlated with MnO ( $r = -0.56$ ), MgO ( $r = -0.72$ ), and CaO ( $r = -0.78$ ). Al<sub>2</sub>O<sub>3</sub> (0.03–0.36 wt.%) was the second most abundant oxide and was moderately negatively correlated with Fe<sub>2</sub>O<sub>3</sub> ( $r = -0.67$ ) and strongly positively correlated with MnO ( $r = 0.54$ ), MgO ( $r = 0.88$ ), and CaO ( $r = 0.94$ ). MnO content was low (0.01–0.12 wt.%) and had strong positive correlation with MgO ( $r = 0.87$ ) and CaO ( $r = 0.75$ ). MgO content was also low (0.02–0.08 wt.%) and had strong positive correlation with CaO ( $r = 0.97$ ). These oxide facies-BIF samples had very low contents of TiO<sub>2</sub> (<0.01 wt.%) and K<sub>2</sub>O (<0.02 wt.%) (Tables 2 and 3).

The carbonate-oxide facies-BIF samples had SiO<sub>2</sub> = 37.23–41.05 wt.% and Fe<sub>2</sub>O<sub>3</sub> = 44.86–55.63 wt.%. SiO<sub>2</sub> had weak positive correlation with MnO ( $r = 0.27$ ) and strong negative correlation with Al<sub>2</sub>O<sub>3</sub> ( $r = -0.84$ ), CaO ( $r = -0.61$ ), and P<sub>2</sub>O<sub>5</sub> ( $r = -0.97$ ). Fe<sub>2</sub>O<sub>3</sub> was strongly negatively correlated with MnO ( $r = -0.85$ ), MgO ( $r = -0.98$ ), and CaO ( $r = -0.93$ ). The MgO content (0.18–1.99 wt.%) was strongly positively correlated with

CaO ( $r = 0.98$ ), suggesting the incorporation of Mg in carbonate, which was the dominant phase in carbonate-oxide facies. Contents of the remaining major oxides, including  $\text{TiO}_2$ ,  $\text{Al}_2\text{O}_3$ , MnO, CaO,  $\text{K}_2\text{O}$ ,  $\text{Na}_2\text{O}$ , and  $\text{P}_2\text{O}_5$ , were below 1.00wt.%. The  $\text{Al}_2\text{O}_3$  content (0.06–0.48 wt.%) was strongly positively correlated with MgO ( $r = 0.85$ ) and CaO ( $r = 0.94$ ) (Table 4) but negatively correlated with  $\text{Fe}_2\text{O}_3$  ( $r = -0.75$ ). The MnO content (0.15–0.44 wt.%) was positively correlated with MgO ( $r = 0.74$ ) and CaO ( $r = 0.60$ ) but negatively correlated with  $\text{P}_2\text{O}_5$  ( $r = -0.48$ ) (Tables 2 and 4).

### 5.2.2. Trace Elements

Trace element concentrations of the Nabebe BIF varied widely (Table 5). The oxide facies-BIF had lower Zr (0.9–2.1 ppm), Nb (0.1–0.3 ppm), and Zn (3–21 ppm) but higher Cr (15–52 ppm) and V (1–8 ppm) contents than the carbonate-oxide facies-BIF, which had Zr (1.4–7.6 ppm), Nb (0.1–1.1 ppm), Zn (11–175 ppm), Cr (12–50 ppm), and V (5–7 ppm). Transition metals, which showed slight enrichments (relative to HFSEs), are commonly used as indicators of direct volcanogenic hydrothermal input in chemical precipitates [46]. When normalized to the average upper continental crust (UCC) [43], our BIF samples were depleted in most high field strength elements (HFSEs; e.g., Zr, Nb, Th, and REEs) and large ion lithophile elements (LILEs; K and Rb) (Figure 7).

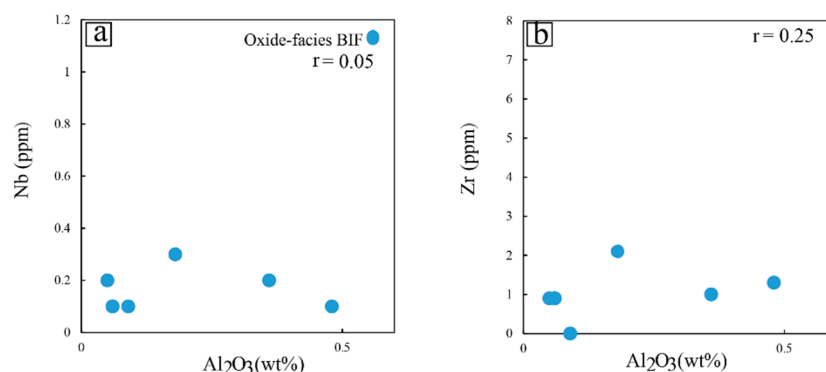


**Figure 7.** Upper continental crust (UCC)-normalized trace element patterns of the Nabebe BIF. UCC normalizing values from [47].

Table 5. Trace element compositions (in ppm) and ratios of the Nabeba BIF.

BIF Facies	Oxide							Carbonate-Oxide			
	Sample Name	CG-NB3	CG-NB6	CG-C2	CG-C21	CG-C23-1	CG-C23-2	CG-C25	CG-NB1	CG-NB10	CG-C5
Li	0.4	0.3	0.6	0.2	0.2	0.2	0.2	0.2	2.4	2.1	0.2
Be	0.21	0.16	1.18	0.61	0.44	0.33	0.23	0.23	0.19	0.34	0.47
V	8	1	5	3	4	2	2	5	7	5	
Ni	2.8	1.4	13.1	6.5	5.6	5.3	4.0	10.7	15.8	6.7	
Co	0.3	0.2	2.5	2.0	2.0	2.0	1.0	5.7	3.4	2.3	
Cr	52	39	25	22	23	19	15	39	50	12	
Sc	0.8	0.2	0.4	0.6	0.3	0.2	0.2	0.4	0.9	0.3	
Rb	1.4	0.4	0.2	0.3	2.0	1.5	<0.1	1.0	0.5	1.0	
Ba	13.3	10.6	2.7	4.4	59.7	41.1	2.1	42.0	51.9	22.9	
Sr	2.9	3.2	0.5	0.2	0.7	0.6	0.2	5.1	20.4	0.7	
Th	0.05	0.03	0.06	0.08	0.04	0.03	0.02	0.08	0.15	0.09	
Zr	2.1	1.0	0.9	1.3	0.9	0.9	<0.5	6.5	7.6	1.4	
Cu	<0.2	0.4	0.6	1.7	1.9	0.2	2.1	2.1	0.6	5.4	
Zn	<2	<2	21	10	8	9	3	107	175	11	
Ga	0.51	0.25	0.54	0.32	0.78	0.62	0.21	0.65	0.74	0.46	
Nb	0.3	0.2	0.2	0.1	0.1	0.1	0.1	1.1	0.3	0.1	
Cs	0.10	0.03	<0.01	0.04	0.06	0.03	0.01	0.03	<0.01	0.01	
La	1.6	1.4	1.4	1.6	1.8	1.7	1.5	1.5	1.4	2.4	
Ce	3.8	3.4	3.0	4.0	4.2	3.9	3.1	3.5	3.1	4.4	
Pr	0.45	0.40	0.37	0.36	0.48	0.40	0.32	0.39	0.34	0.42	
Nd	2.1	1.5	1.7	1.6	2.1	1.9	1.4	1.9	1.4	1.7	
Sm	0.44	0.35	0.51	0.43	0.55	0.40	0.41	0.40	0.35	0.41	
Eu	0.21	0.14	0.23	0.29	0.35	0.24	0.18	0.25	0.15	0.21	
Gd	0.57	0.35	0.63	0.54	1.06	0.68	0.58	0.58	0.39	0.50	
Tb	0.10	0.06	0.11	0.10	0.13	0.11	0.10	0.10	0.07	0.09	
Dy	0.61	0.36	0.68	0.61	0.69	0.71	0.63	0.62	0.47	0.55	
Y	5.0	3.2	5.4	4.7	5.2	5.6	5.1	4.6	3.5	4.3	
Ho	0.14	0.08	0.16	0.14	0.15	0.15	0.15	0.14	0.11	0.12	
Er	0.39	0.25	0.49	0.41	0.45	0.46	0.43	0.40	0.36	0.35	
Tm	0.06	0.04	0.08	0.06	0.07	0.07	0.06	0.06	0.06	0.05	
Yb	0.38	0.26	0.59	0.39	0.45	0.45	0.40	0.39	0.41	0.32	
Lu	0.06	0.04	0.10	0.06	0.08	0.08	0.06	0.06	0.07	0.05	
Hf	<0.2	<0.2	<0.2	<0.2	<0.2	<0.2	<0.2	0.2	0.2	<0.2	
Ta	0.15	0.06	0.09	<0.05	0.08	0.08	<0.05	0.05	0.05	0.05	
Pb	1.0	1.4	0.9	0.9	<0.5	0.5	<0.5	2.6	0.7	0.6	
U	0.09	<0.05	<0.05	<0.05	<0.05	<0.05	<0.05	<0.05	<0.05	<0.05	
SREE-Y	15.52	11.58	14.96	14.88	17.31	16.39	13.99	14.49	11.82	15.52	
ΣREE	10.52	8.38	9.56	10.18	12.11	10.79	8.89	9.89	8.32	11.22	
Y/Ho	35.71	40.00	33.75	33.57	34.67	37.33	34.00	32.86	31.82	35.83	
(Ce/Ce*) <sub>SN</sub>	1.03	1.04	0.96	1.22	1.04	1.09	1.03	1.05	1.04	1.00	
(Pr/Pr*) <sub>SN</sub>	0.93	1.04	0.95	0.84	0.95	0.86	0.90	0.88	0.96	0.90	
(Eu/Eu*) <sub>SN</sub>	1.86	1.77	1.80	2.60	2.43	2.12	1.65	2.32	1.77	2.03	
(La/Yb) <sub>SN</sub>	0.24	0.31	0.14	0.24	0.23	0.22	0.22	0.22	0.20	0.43	
(Tb/Yb) <sub>SN</sub>	0.90	0.79	0.64	0.88	0.99	0.84	0.86	0.88	0.59	0.97	
(Y/Y*) <sub>SN</sub>	1.06	1.17	1.01	1.00	1.00	1.06	1.03	0.97	0.95	1.04	
(Sm/Yb) <sub>SN</sub>	0.46	0.53	0.34	0.44	0.48	0.35	0.41	0.41	0.34	0.51	
(Eu/Sm) <sub>SN</sub>	2.45	2.06	2.32	3.47	3.27	3.08	2.26	3.21	2.20	2.63	
(Pr/Yb) <sub>SN</sub>	0.30	0.38	0.16	0.23	0.27	0.22	0.20	0.25	0.21	0.33	
(Tb/Yb) <sub>SN</sub>	0.90	0.79	0.64	0.88	0.99	0.84	0.86	0.88	0.59	0.97	
(Gd/Gd*) <sub>SN</sub>	1.15	1.10	1.14	1.09	1.65	1.29	1.18	1.19	1.09	1.11	
(Eu/Eu*) <sub>CN</sub>	1.28	1.22	1.24	1.84	1.40	1.41	1.13	1.59	1.24	1.42	
(Sm/Yb) <sub>CN</sub>	1.29	1.50	0.96	1.23	1.36	0.99	1.14	1.14	0.95	1.42	
(La/Yb) <sub>CN</sub>	3.02	3.86	1.70	2.94	2.87	2.71	2.69	2.76	2.45	5.38	
(Tb/Yb) <sub>CN</sub>	1.20	1.05	0.85	1.17	1.31	1.11	1.14	1.17	0.78	1.28	

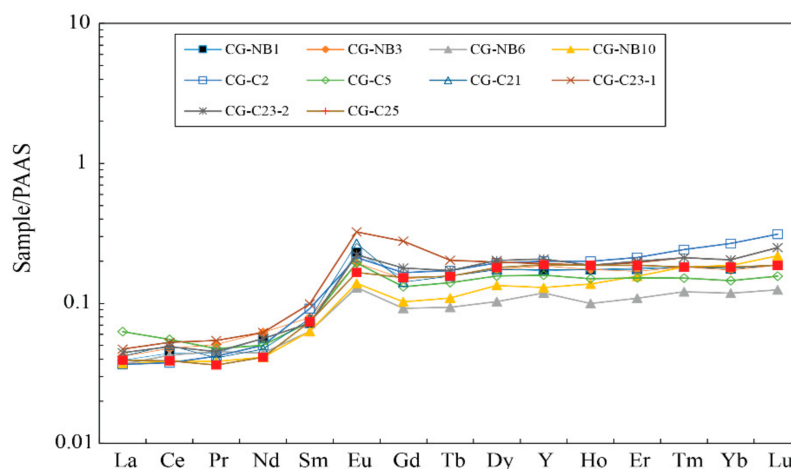
Note: (Eu/Eu\*)<sub>CN</sub>, (Sm/Yb)<sub>CN</sub>, (La/Yb)<sub>CN</sub> and (Tb/Yb)<sub>CN</sub> are normalized to chondrite [48], while (Ce/Ce\*)<sub>SN</sub>, (Pr/Pr\*)<sub>SN</sub>, (La/Yb)<sub>SN</sub>, (Tb/Yb)<sub>SN</sub>, (Y/Y\*)<sub>SN</sub>, (Sm/Yb)<sub>SN</sub>, (Eu/Sm)<sub>SN</sub>, and (Eu/Eu\*)<sub>SN</sub> are normalized to PAAS [49]. In the oxide facies-BIF, Nb and Al<sub>2</sub>O<sub>3</sub> showed no or weak positive correlation (r = 0.05) (Figure 8a), while for the carbonate-oxide facies-BIF, the three samples were too few for the correlative analysis and therefore were not plotted in Figure 8. In addition, Zr and Al<sub>2</sub>O<sub>3</sub> were weakly positively correlated in the oxide facies-BIF (r = 0.25) (Figure 8b).



**Figure 8.** Bivariate diagrams showing Al<sub>2</sub>O<sub>3</sub> vs. Nb and Al<sub>2</sub>O<sub>3</sub> vs. Zr.

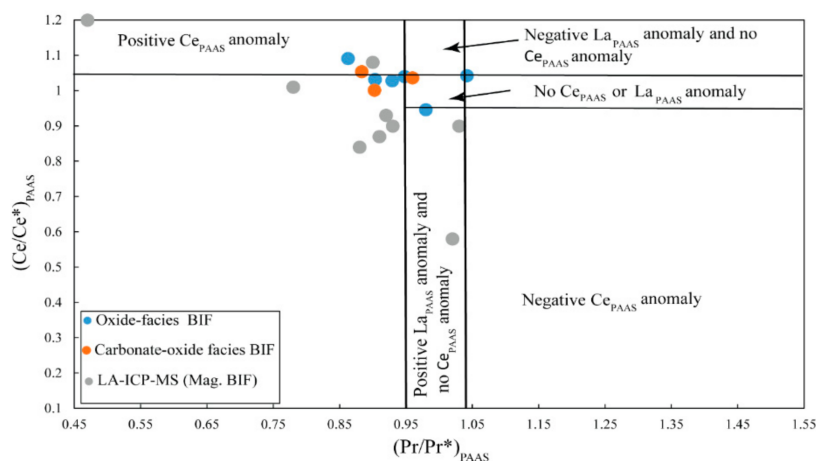
### 5.2.3. Rare Earth Elements

The Nabeba BIF had generally low total REE contents ( $\Sigma\text{REE} = 8.32\text{--}12.11$  ppm), with an average of 10.06 ppm for the oxide facies-BIF and 9.81 ppm for the carbonate-oxide facies-BIF samples (Table 5). The low  $\Sigma\text{REE}$  content feature was also reported in many other Archean BIFs [46,50,51]. The PAAS-normalized REE+Y (REY) patterns for the studied BIF were characterized by greater depletions in LREE/HREE ( $(\text{La}/\text{Yb})_{\text{SN}} = 0.23$  (oxide facies-BIF) and 0.28 (carbonate-oxide facies-BIF) than MREE/HREE ( $(\text{Tb}/\text{Yb})_{\text{SN}} = 0.84$  (oxide facies-BIF) and 0.81 (carbonate-oxide facies-BIF)) (Figure 9). Strong positive Eu anomalies  $(\text{Eu}/\text{Eu}^*)_{\text{SN}}$  were present in both the oxide facies-BIF (1.65–2.60) and the carbonate-oxide facies-BIF (1.77–2.32) samples. The samples also had average high  $(\text{La}/\text{La}^*)_{\text{SN}}$  values, i.e., 1.37 for the oxide facies-BIF and 1.51 for the carbonate-oxide facies-BIF.



**Figure 9.** PASS-normalized REE patterns of the Nabeba BIF. Normalizing values from McLennan [49].

Determining Ce anomalies is often complicated due to the anomalous behavior of La. Bau and Dulski [3] suggested the use of Ce/Ce\* vs. Pr/Pr\* diagram to determine La and Ce anomalies in BIFs. The Ce/Ce\* and the Pr/Pr\* ratios were calculated as  $\text{Ce}_{\text{SN}} / (0.5 \text{La}_{\text{SN}} + 0.5 \text{Pr}_{\text{SN}})$  and as  $\text{Pr}_{\text{SN}} / (0.5 \text{Ce}_{\text{SN}} + 0.5 \text{Nd}_{\text{SN}})$ , respectively. The Ce/Ce\* vs. Pr/Pr\* plot indicated that the majority of our samples had no negative Ce anomalies and had very small to negligible positive La and Ce anomalies (Figure 10).



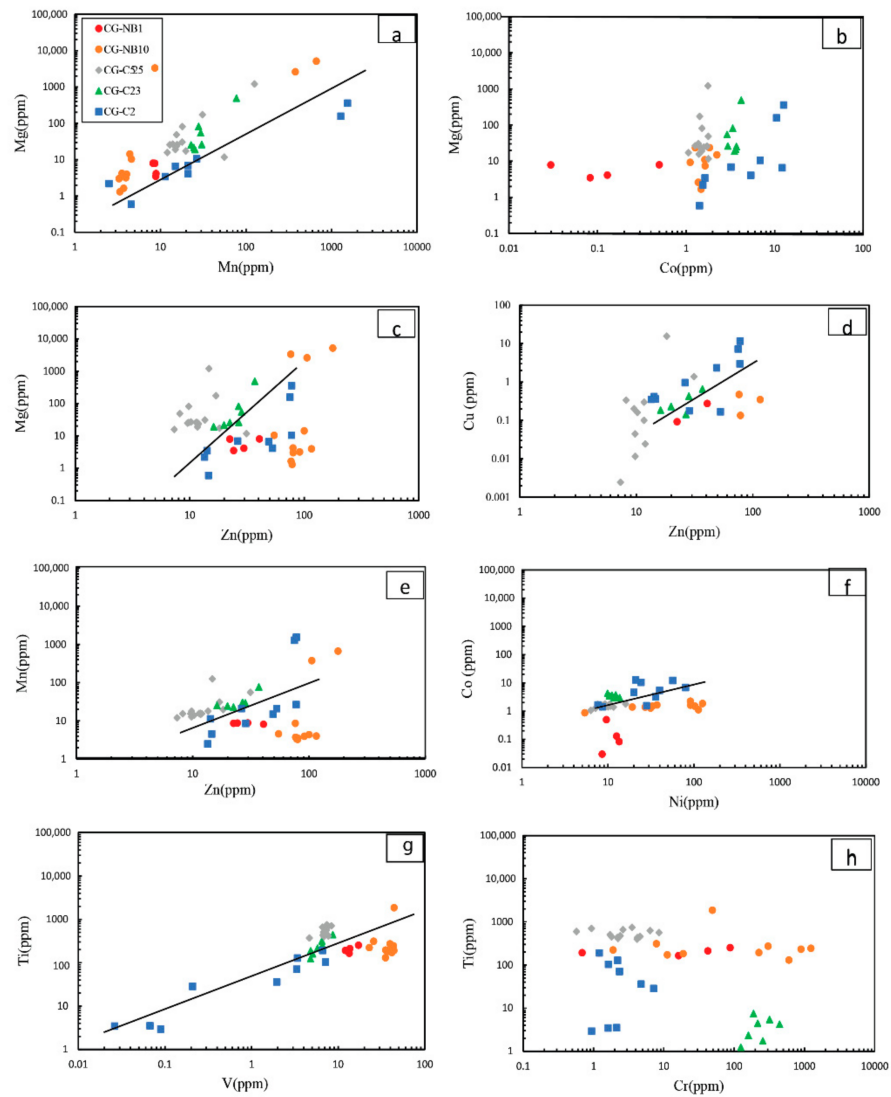
**Figure 10.** PASS-normalized Ce/Ce\* vs. Pr/Pr\* diagram, showing La and Ce anomalies (after [3]) for the Nabeba BIF.

### 5.3. LA-ICP-MS Magnetite Chemical Compositions

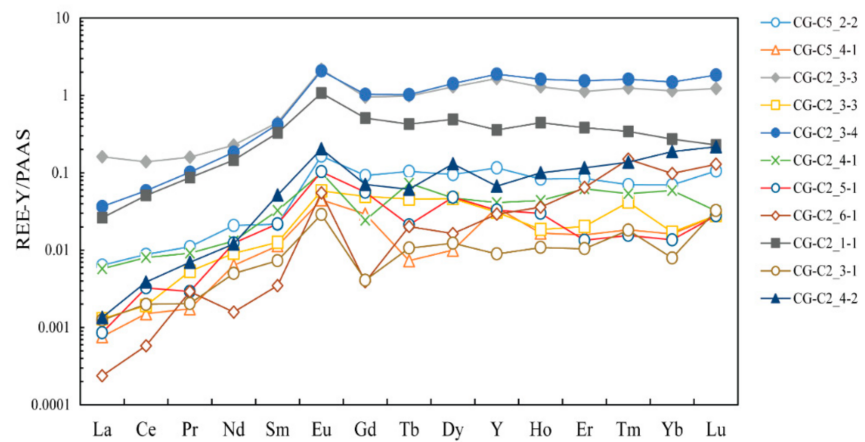
#### 5.3.1. Magnetite in the Oxide Facies-BIF

Elemental contents of magnetite from the Nabeba oxide facies-BIF varied considerably (Table S1), except for SiO<sub>2</sub> (0.07–9.40 wt.%), which was attributed to the presence of quartz near the analysis spot. Contents of other major element oxides (e.g., MgO and MnO) were very low (<0.01 wt.%), while those of most trace elements were either close to the detection limit or showed insignificant concentration change, although Ni (6.37–80.00 ppm), Co (1.06–12.70 ppm), Zn (7.34–77.80 ppm), and Y (0.17–50.80 ppm) displayed high values (Table S1). Magnetite trace element contents of the oxide facies-BIF differed widely, as shown in Mg vs. Mn ( $r = 0.25$ ), Mn vs. Zn ( $r = 0.67$ ), Ti vs. V ( $r = 0.8$ ), Cu vs. Zn ( $r = 0.47$ ), Co vs. Ni ( $r = 0.59$ ), and Ti vs. Cr ( $r = 0.81$ ) diagrams, indicating positive correlations. A few trace elements had narrow concentration ranges (within one order of magnitude), and they had no or weak positive correlations, i.e., Mg vs. Zn ( $r = 0.08$ ) and Mg vs. Co ( $r = 0.08$ ) (Figure 11b,c).

The magnetite REY contents of the Nabeba oxide facies-BIF were generally above the detection limits (Table S1). The PAAS-normalized REY patterns were characterized by LREE/HREE depletions (Nd/Yb = 0.012–0.674) and MREE/HREE depletions (Sm/Yb = 0.0282–0.9572) (Figure 12), with the exception of Mag/5–1 (sample CG-C2) that had weak MREE/HREE enrichment (Sm/Yb = 1.279). The PAAS-normalized REY patterns also showed negative to weak positive La anomalies (0.0805–0.9976) and weak (negative or positive) Y ( $Y/Y^* = 0.4656$ – $2.1268$ ) and positive Eu ( $Eu/Eu^* = 1.9963$ – $5.4061$ ) anomalies. Negligible to moderate positive Ce ( $Ce/Ce^* = 0.3676$ – $1.7234$ ) and Gd ( $Gd/Gd^* = 0.3034$ – $3.745$ ) anomalies were also found in our samples. The super-chondritic Y/Ho ratios = 18.219–45.336, with an exceptionally high ratio for Mag/4–1 ( $Y/Ho = 57.70$ ) and Mag/6–1 ( $Y/Ho = 91.62$ ).



**Figure 11.** Binary diagrams of magnetite chemical compositions from the Nabeba BIF: (a) Mn vs. Mg, (b) Co vs. Mg, (c) Zn vs. Mg, (d) Si vs. Mg, (e) Zn vs. Mn, (f) Ni vs. Co, (g) V vs. Cr, and (h) Cr vs. Ti.



**Figure 12.** PAAS-normalized REY patterns of selected average magnetite from the Nabeba oxide facies-BIF.



### 5.3.2. Magnetite in Carbonate-Oxide Facies-BIF

Apart from the high major iron oxide content, other major element oxides (e.g., MgO, MnO and TiO<sub>2</sub>) had concentrations generally below 2 wt.% (Table S2).

Compared to the magnetite samples from the oxide facies BIF, REY contents of most magnetite samples from the carbonate-oxide facies BIF were below the detection limit, which might have been due to poor signals and/or alterations. This explains the very few data points used for the carbonate-oxide facies BIF. The data were not used in the bivariate plots to test for any correlations between analysed elements. Correlations based on bivariate plots for the Nabeba BIF were done using the whole rock geochemical data (Figure 8) and the magnetite LA-ICP-MS data for oxide-facies and carbonate-oxide-facies BIF (Figure 11). The magnetite LA-ICP-MS data for carbonate-oxide facies BIF were used cautiously, with emphasis on (1) the nature of the REY patterns when compared with other well-studied BIFs and the Nabeba oxide facies BIF in this study, and (2) the absolute values (i.e., amounts) of the elemental concentrations and whether they were higher or lower than the concentrations in the oxide facies BIF'.

## 6. Discussion

### 6.1. Primary Geochemical Signature of the Nabeba BIF Magnetite

The primary iron minerals (e.g., Fe-oxyhydroxide) in most Archean BIFs were modified by later diagenesis and regional metamorphism [52]. These assertions in which magnetite in BIF were formed by diagenetic and/or metamorphic processes are illustrated by the following three equations:

- (1)  $2\text{Fe}(\text{OH})_3 + \text{Fe}^{2+} \rightarrow \text{Fe}_3\text{O}_4 + 2\text{H}_2\text{O} + 2\text{H}^+$  [26,53];
- (2)  $12\text{Fe}(\text{OH})_3 + \text{CH}_2\text{O} \rightarrow 4\text{Fe}_3\text{O}_4 + \text{CO}_2 + 19\text{H}_2\text{O}$  [54];
- (3)  $\text{Fe}(\text{OH})_2 \cdot 2\text{Fe}(\text{OH})_3 \rightarrow \text{Fe}_3\text{O}_4 + 4\text{H}_2\text{O}$  [52].

Recent studies [3,29,55] showed that the separation of Y and REE in the ambient seawater column represents depletions in LREEs relative to HREEs, in association with Y and La positive anomalies, which is explained by the preferential removal of these elements in organic matter, Fe oxyhydroxides, and clay minerals. Magnetite is the most abundant iron oxide mineral in both facies of the Nabeba BIF. In order to use the magnetite as a proxy for understanding the environment of deposition, it is essential to establish whether the Nabeba BIF magnetite retained the REY signature of the precursor minerals, notably Fe oxyhydroxides [1,4,56–60].

In our study, the magnetite REY patterns in the two-facies BIF samples showed LREE/HREE and MREE/HREE depletions, negative to slightly positive La anomalies, slightly negative to positive Y anomalies and positive Eu anomalies, negligible to weak positive Ce and Gd anomalies, and super-chondritic Y/Ho ratios (Table S1). The Nabeba BIF magnetite showed similar REY characteristics as those in other well-studied Archean BIF magnetites from Isua, North Caribou, Temagami [61], Badampahar [62], Musselwhite and Meliadine BIFs [30], regardless of their diagenetic, later metamorphic, and hydrothermal histories. The similarity with magnetite data of the other well-studied BIFs indicates that the Nabeba BIF magnetite possesses the primary geochemical signatures that would be useful in determining the depositional environment and the genesis of the Nabeba BIF.

### 6.2. Characterization of the Nabeba BIF Depositional Environment

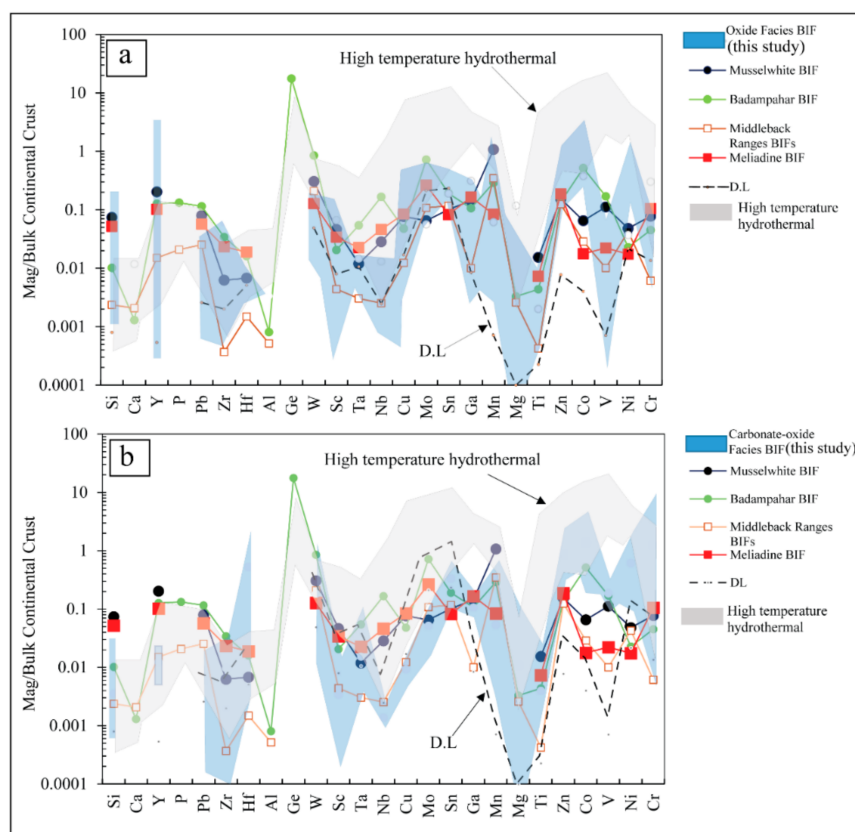
#### 6.2.1. Purity of the Nabeba BIF Based on Amount of Detrital Input

The magnetite trace element contents of the Nabeba BIF were generally similar to those of other BIFs (e.g., Meliadine and Musselwhite), except for the high Y-Ni contents in the former (Figure 13a,b). Most of our samples were plotted in the extended BIF field of Gourcerol et al. [30] and overlapped with the extended field of Sun et al. [32] (Figure 14).

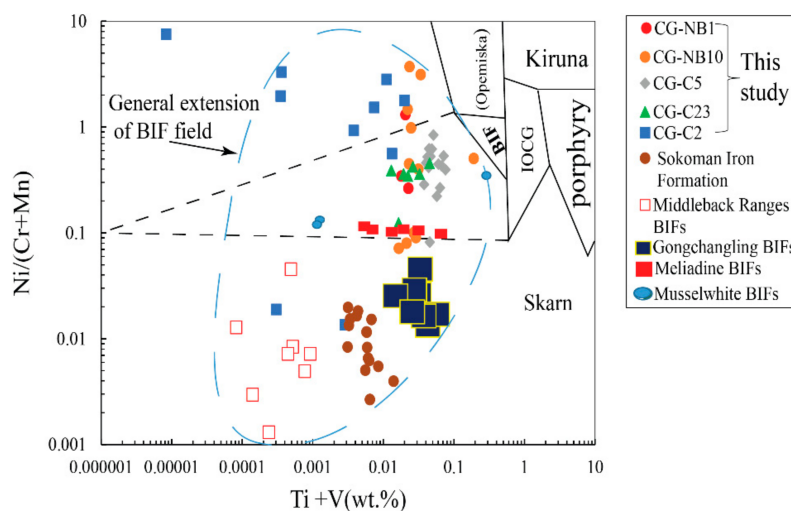
Since BIFs are formed by chemical precipitation, any detrital input would produce high contents of Al<sub>2</sub>O<sub>3</sub> and TiO<sub>2</sub> and correlations between HFSE contents and REE ratios (e.g., La/La\*, Y/Ho, Pr/Yb, and Ce/Ce\*) [66–68]. As we mentioned previously, the three

samples of carbonate-oxide facies BIF were not good for correlation such as in Figure 15, but we used their element ratios to discuss other aspects of the BIF characteristics. Thus, the variations and the negative correlations of low  $\text{Al}_2\text{O}_3$  concentrations with  $\text{SiO}_2$  and the weak  $\Sigma\text{REE}$  vs.  $\text{Al}_2\text{O}_3$  correlations in the oxide-facies BIF samples (Tables 3 and 4; Figure 15a) suggested insignificant detrital input in the Nabeba BIF formation [5,67,69,70]. However, the strong positive  $\Sigma\text{REE}$  vs.  $\text{P}_2\text{O}_5$  correlation in oxide-facies indicated that  $\text{P}_2\text{O}_5$  controlled REY contents during the BIF precipitation (Figure 15). Slight negative Zr vs. Y/Ho correlation ( $r = -0.11$ ; Figure 15c) of the oxide-facies BIF further argued against detrital (terrigenous) contamination during the BIF chemical precipitation [71].

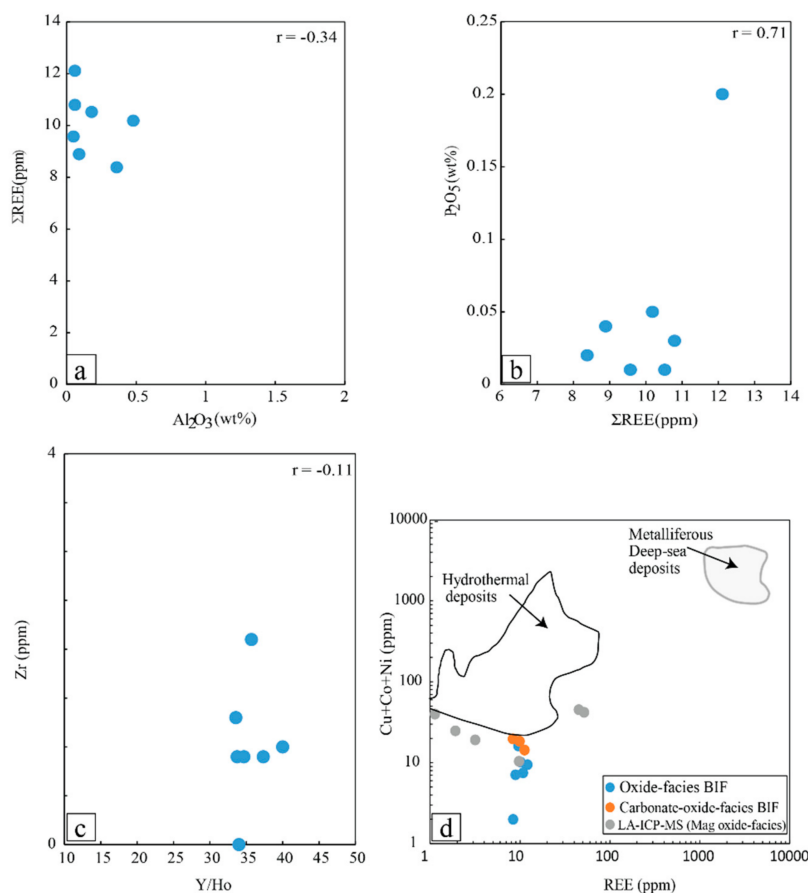
Meanwhile, hydrothermal input into the Nabeba chemical sediments was implied from the high average Si/Al (oxide facies: 772; carbonate-oxide facies: 326) and Fe/Al (oxide facies: 708; carbonate-oxide facies: 474) [14,72,73]. In the  $\Sigma\text{REE}$  vs. (Co+Ni+Cu) diagram [5,74], samples of both facies were plotted close to the hydrothermal deposit field (Figure 15d), implying that the main constituents (Si and Fe) of the Nabeba BIF originated from hydrothermal fluids. The close-superchondritic Y/Ho ratio ( $\sim 35$ ) in the Nabeba BIF samples suggested that this signature was inherited from hydrothermal fluid that had not undergone significant decoupling of Y from REE [70,75,76]. In Figure 13, all the Nabeba BIF magnetite data from both facies were plotted below the high-T magmatic-hydrothermal field [63] and exhibited moderate Eu anomalies (Figure 16). This suggested that the Nabeba BIF precipitated from medium-temperature fluids or a mixture of high-temperature hydrothermal vent fluids ( $T = \sim 250^\circ\text{C}$ ) with cold ambient seawater.



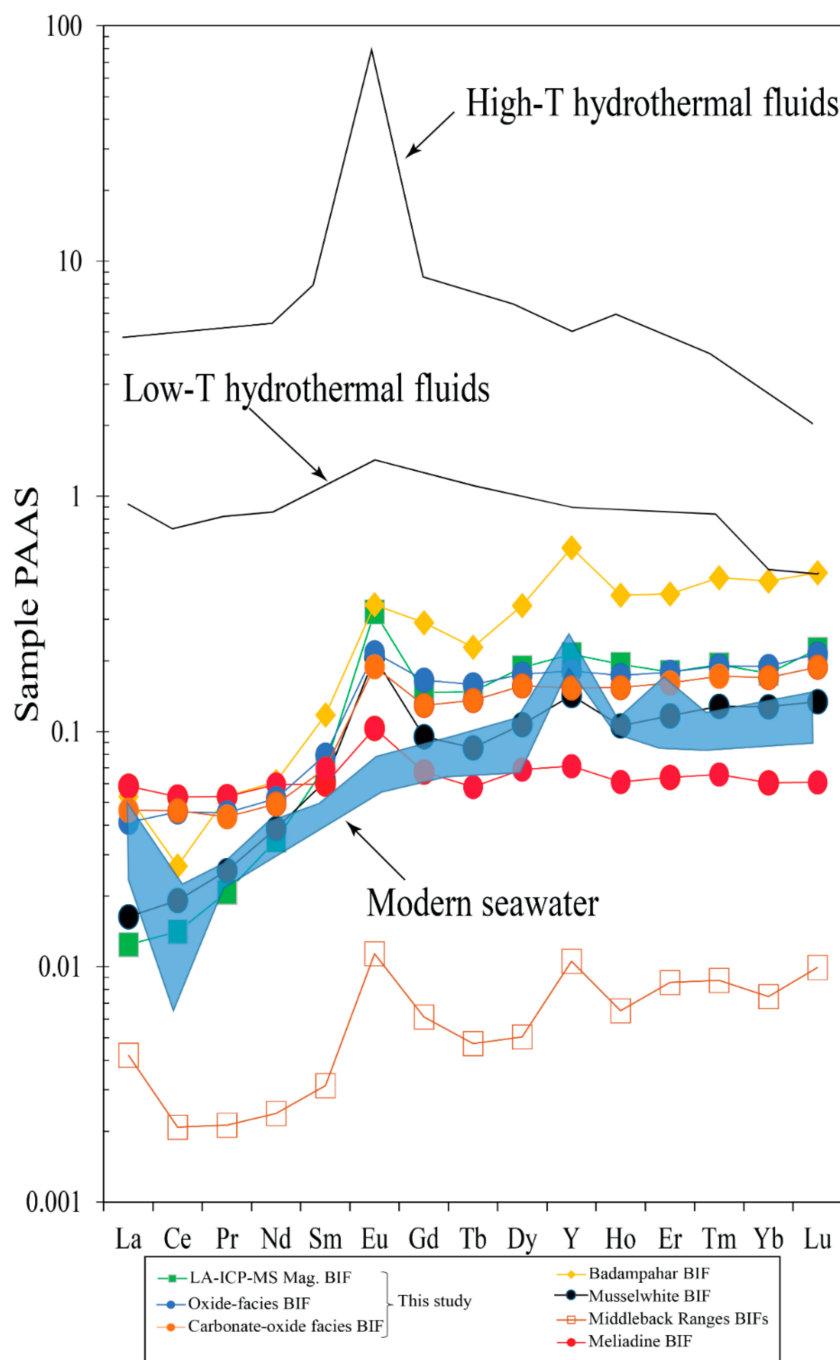
**Figure 13.** Bulk continental crust (BCC)-normalized multi-element diagrams for the magnetite layers from the Nabeba BIF in comparison with selected BIFs (from Musselwhite, Meliadine [30], Badampahar [31], and Middleback Ranges (Magnet Iron) [33]) (all in situ analysis; [30,31,33]) and high-temperature hydrothermal magnetite [63]: (a) oxide facies-BIF magnetite; (b) carbonate-oxide facies-BIF magnetite. Blue area in both diagrams denotes elemental concentration of different spots in the Nabeba BIF magnetite layers, and the grey area denotes the elemental concentration of high-temperature hydrothermal magnetite [63].



**Figure 14.** (Ti + V) vs. Ni/(Cr + Mn) discrimination diagram [64] for the Nabeba BIF magnetite. Magnetite from different types of iron deposits, including Kiruna apatite-magnetite, iron-oxide-copper-gold (IOCG), porphyry Cu, magmatic Fe-Ti-V oxide, BIF, and Opemiska-type, are also shown for comparison. The extended BIF field represented by a dashed black lines results from Gourcerol et al. [30]. The general BIF field represented by a dashed blue circle is generated from this study following the magnetite concentrations plots of from this study and Middleback Ranges BIFs [33], Meliadine BIFs, Musselwhite BIFs [30], Gongchangling BIFs [32], and Sokoman iron formation [28,65].



**Figure 15.** Plots of (a)  $\Sigma$ REE vs.  $Al_2O_3$ ; (b)  $P_2O_5$  vs.  $\Sigma$ REE; (c) Y/Ho vs. Zr; (d) (Co+Ni+Cu) vs.  $\Sigma$ REE (after [5]) for the Nabeba BIF.



**Figure 16.** PAAS-normalized REY patterns of magnetite and whole-rock BIF (mean values) from Nabeba in relation to the average compositions of hydrothermal fluid [76] and modern seawater [71]. Magnetite geochemical data from Musselwhite, Meliadine [30], Badampahar [31], and Middleback Ranges (Iron Magnet mine) [33] BIFs are also shown for comparison.

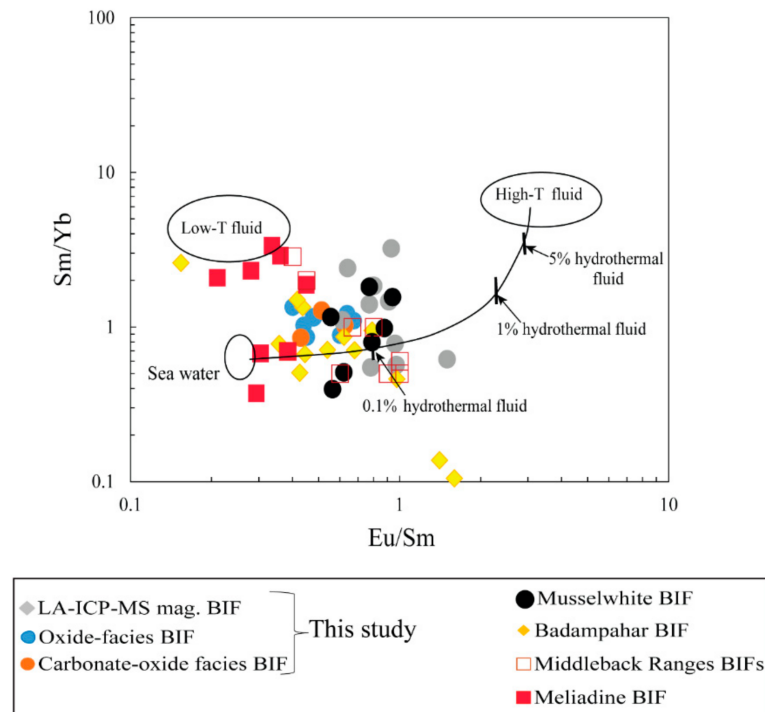
6.2.2. Fluid Mixing and T-fO<sub>2</sub> Conditions of Nabeba BIF Precipitation

The Nabeba BIF magnetite and the whole-rock samples had weak positive Ce anomalies (except for two samples of CG-NB3 and CG-NB6) (Figure 10). Their REY distribution patterns showed LREE depletions, a mild Ce incongruity, and marked positive anomalies for Eu and weakly positive to negligible Y (Figure 16). This indicated that the Nabeba BIF formation was likely influenced by reduced bottom water [77] and the chemical precipitates were derived from a mixture of anoxic seawater and medium-to-high-temperature hydrothermal fluids. Similar geochemical trends were found in the magnetite from many

well-studied Archean BIFs, such as Musselwhite and Meliadine [30], Badampahar [62], and Middle Back Ranges [33]. This implied that, despite the overprinting diagenetic, metamorphic, and hydrothermal processes, the Nabeba magnetite still retained the geochemical signature of the fluid mixing that formed the original Nabeba chemical precipitates on the paleo-seafloor.

To determine the proportion of fluid-mixing components (i.e., hydrothermal vent fluid and seawater) for the Nabeba BIF, variations of Sm/Yb and Eu/Sm ratios [78] were used (Figure 17), which yielded ~0.1% for the high-temperature hydrothermal vent fluid input [2,30]. Strong positive Eu anomalies were associated with high-temperature hydrothermal fluids, medium-to-weak Eu anomalies with low (or medium)-temperature hydrothermal fluids, and no Eu anomaly with seawater (Figure 16; [3,23,71]). Thus, the weak Eu anomalies exhibited by both facies of the Nabeba BIF (Figure 16) was consistent with the fluid mixing that dominantly comprised (~99.9%) ambient seawater with minor (~0.1%) high-temperature vent fluids.

The presence of W, As, Pb, Mo, and Sn in the precipitates from seawater was influenced by hydrothermal fluids associated with felsic rocks. In contrast, hydrothermal fluids related to mafic-ultramafic rocks would produce elevated Ti, V, Ni, Cr, and Mg contents [28,79], which was the case for the Nabeba BIF (Figures 2 and 11) [28,79]. Titanium and V contents in magnetite are sensitive indicators of redox conditions and mafic material input [80,81]. The magnetite precipitated from reduced fluids had lower Ti/V ratios than those of the magnetite precipitated from oxidized fluids [32,80–82]. Overall, the Ti/V ratios from both facies of the Nabeba BIF were considered as low. Therefore, the magnetite trace element compositions of these two facies indicated medium-high temperature and relatively reducing conditions and were likely related to mafic-ultramafic hydrothermal input during the BIF deposition on the paleo-seafloor.



**Figure 17.** Sm/Yb vs. Eu/Sm plot (modified after Alexander et al. [78]) for the Nabeba BIF and other BIFs shown in Figure 16. Average compositions of high-temperature (>350 °C) hydrothermal fluids [76], low-temperature hydrothermal fluids [83], and Pacific seawater [84] are shown for comparison.

However, when comparing both facies of the Nabeba BIF, magnetite from the carbonate-oxide facies-BIF had higher V content than its oxide facies-BIF counterpart (Figure 11g),

yielding lower magnetite Ti/V ratio for the carbonate-oxide facies (3.72–16.02 ppm, average 10.95 ppm) than that for the oxide facies (18.51–136.69 ppm, average 60.63 ppm). This suggested that the depositional environment was more reducing for the carbonate-oxide facies than for the oxide facies [28,65].

## 7. Conclusions

1. The Nabeba BIF comprised two facies (oxide and carbonate-oxide) and displays alternating iron-rich and quartz-rich layers. The BIF consisted of magnetite, hematite, and quartz, together with minor siderite and magnesite. Geochemical analysis suggested that the Nabeba BIF had mainly Fe and Si, with minor CO<sub>3</sub> and trace detrital material.
2. Magnetite from both BIF facies had a wide range of trace element contents (e.g., Mn, Ti, Ni, Mg, Cr, V, and Zn), which suggested input of medium-high-temperature hydrothermal vent fluids. Redox and temperature conditions likely controlled the magnetite chemical compositions.
3. Major and trace (including REE) element compositions suggested that Fe and Si were sourced from anoxic seawater mixed with medium-high-temperature (>250 °C) hydrothermal fluids. The Nabeba BIF was likely deposited in a reducing marine environment.

**Supplementary Materials:** The following are available online at <https://www.mdpi.com/article/10.3390/min11060579/s1>, Table S1: Chemical composition of magnetite from the oxide facies BIF of the Nabeba deposit major element (wt.%) trace elements (ppm), Table S2: Chemical composition of magnetite from the carbonate facies BIF of the Nabeba deposit major element (wt.%) trace elements (ppm).

**Author Contributions:** Conceptualization, C.G.E. and Y.X.; methodology, C.G.E., Y.X., and K.A.-A.; formal analysis C.G.E., Y.X., and Y.Q.; investigation, C.G.E., Y.X., K.A.-A., B.G., and Y.Q.; resources, Y.X.; writing—original draft preparation: C.G.E.; writing—review and editing, C.G.E., Y.X., K.A.-A., B.G., and Y.Q.; funding acquisition: Y.X. All authors have read and agreed to the published version of the manuscript.

**Funding:** This research was funded by the administration of Science and Technology of the People's Republic of China (State Key Research Plan), grant number 2017YFC0601302, and by the scholarship at University of Science and Technology Beijing (No. b20160568).

**Acknowledgments:** We thank the Sundance Resources for providing data and consent to field work and sample collection. We thank A. Yoka and L. Djama (Ministry of Mines and Geology, Republic of Congo) for helping with the fieldwork. The authors would also like to thank FY Wang for helping with the LA-ICP-MS analysis. P. Thurston (Laurentian University) and two anonymous reviewers are sincerely thanked for their inspiring suggestions that helped to improve the initial version of the manuscript.

**Conflicts of Interest:** The authors declare no conflict of interest.

## References

1. Spier, C.A.; de Oliveira, S.M.B.; Rosiere, C.A. Geology and geochemistry of the Águas Claras and Pico Iron Mines, Quadrilátero Ferrífero, Minas Gerais, Brazil. *Miner. Depos.* **2003**, *38*, 751–774. [[CrossRef](#)]
2. Gourcerol, B.; Thurston, P.; Kontak, D.; Côté-Mantha, O.; Biczok, J. Depositional setting of Algoma-type banded iron formation. *Precamb. Res.* **2016**, *281*, 47–79. [[CrossRef](#)]
3. Bau, M.; Dulski, P. Distribution of yttrium and rare-earth elements in the Penge and Kuruman iron-formations, Transvaal Supergroup, South Africa. *Precamb. Res.* **1996**, *79*, 37–55. [[CrossRef](#)]
4. Beukes, N.J.; Gutzmer, J. Origin and paleoenvironmental significance of major iron formations at the Archean-Paleoproterozoic boundary. *Rev. Econ. Geol.* **2008**, *15*, 5–47.
5. Dymek, R.F.; Klein, C. Chemistry, petrology and origin of banded iron-formation lithologies from the 3800 Ma Isua supracrustal belt, West Greenland. *Precamb. Res.* **1988**, *39*, 247–302. [[CrossRef](#)]
6. Khalil, K.I.; El-Shazly, A.E.; Lehmann, B. Late Neoproterozoic banded iron formation (BIF) in the central Eastern Desert of Egypt: Mineralogical and geochemical implications for the origin of the Gebel El Hadid iron ore deposit. *Ore Geol. Rev.* **2015**, *69*, 380–399. [[CrossRef](#)]
7. Simonson, B.M.; Chan, M.; Archer, A. Origin and evolution of large Precambrian iron formations. *Spec. Papers Geol. Soc. Am.* **2003**, *370*, 231–244.

8. Gross, G.A. A classification of iron formations based on depositional environments. *Canad. Mineral.* **1980**, *18*, 215–222.
9. James, H.L. Sedimentary facies of iron-formation. *Econ. Geol.* **1954**, *49*, 235–293. [[CrossRef](#)]
10. Trendall, A. The significance of iron-formation in the Precambrian stratigraphic record. In *Precambrian Sedimentary Environments: A Modern Approach to Ancient Depositional Systems*; Wiley: Hoboken, NJ, USA, 2002; pp. 33–66.
11. De Waele, B.; Lacorde, M.; Rivers, J. Banded iron formations and associated detrital iron deposits of the Western Congo Craton. In Proceedings of the SEG S015—World-Class Ore Deposits: Discovery to Recovery, Hobart, TAS, Australia, 27–30 September 2015.
12. De Waele, B.; Lacorde, M.; Cunningham, M.; Jupp, B. Understanding Geology and Structure: An Essential Part of Mineral Resource Estimation. *ASEG Ext. Abstr.* **2018**, *1*, 1–8. [[CrossRef](#)]
13. Suh, C.; Cabral, A.; Shemang, E.; Mbinkar, L.; Mboudou, G. Two contrasting iron deposits in the Precambrian mineral belt of Cameroon, West Africa. *Explor. Min. Geol.* **2008**, *17*, 197–207. [[CrossRef](#)]
14. Ganno, S.; Njiosseu Tanko, E.L.; Kouankap, N.G.D.; Djoukouo Soh, A.; Moudioh, C.; Ngnotue, T.; Nzenti, J.P. A mixed seawater and hydrothermal origin of superior-type banded iron formation (BIF)-hosted Kouambo iron deposit, Palaeoproterozoic Nyong series, Southwestern Cameroon: Constraints from petrography and geochemistry. *Ore Geol. Rev.* **2017**, *80*, 860–875.
15. Soh Tamehe, L.; Nzepang, T.M.; Wei, C.T.; Ganno, S.; Ngnotue, T.; Kouankap, N.G.D.; Simon, S.J.; Zhang, J.J.; Nzenti, J.P. Geology and geochemical constrains on the origin and depositional setting of the Kpwa–Atog Boga banded iron formations (BIFs), northwestern Congo craton, southern Cameroon. *Ore Geol. Rev.* **2018**, *95*, 620–638. [[CrossRef](#)]
16. Longley, R.; Kitto, P.; Thornett, S. *Iron Ore. Exploration History of the Mbalam Iron Ore Project*; Sundance Resources Ltd.: Perth, WA, Australia, 2013.
17. Cunningham, M.; De Wael, B. Geological Mapping of Badondo and Iron Mineralisation Targets, Republic of Congo. *Struct. Geol. Resour.* **2012**, *54*, 54–56.
18. Gatse Ebotehouna, C.; Xie, Y.; Adomako-Ansah, K.; Pei, L. Fluid inclusion and oxygen isotope characteristics of vein quartz associated with the nabeba iron deposit, Republic of Congo: Implications for the enrichment of hypogene ores. *Minerals* **2019**, *9*, 677. [[CrossRef](#)]
19. Ministère des Mines et de L’Energie, Direction Générale des Mines. *Carte Géologique de la République du Congo au 1:1000*; Ministère des Mines et de L’Energie: Brazzaville, Republic of Congo, 1995.
20. Pickard, A. SHRIMP U–Pb zircon ages for the Palaeoproterozoic Kuruman Iron Formation, northern Cape Province, South Africa: Evidence for simultaneous BIF deposition on Kaapvaal and Pilbara cratons. *Precamb. Res.* **2003**, *125*, 275–315. [[CrossRef](#)]
21. Huston, D.L.; Logan, G.A. Barite, BIFs and bugs: Evidence for the evolution of the Earth’s early hydrosphere. *Earth Planet. Sci. Lett.* **2004**, *220*, 41–55. [[CrossRef](#)]
22. Bekker, A.; Slack, J.F.; Planavsky, N.; Krapez, B.; Hofmann, A.; Konhauser, K.O.; Rouxel, O.J. Iron formation: The sedimentary product of a complex interplay among mantle, tectonic, oceanic, and biospheric processes. *Econ. Geol.* **2010**, *105*, 467–508. [[CrossRef](#)]
23. Planavsky, N.; Bekker, A.; Rouxel, O.J.; Kamber, B.; Hofmann, A.; Knudsen, A.; Lyons, T.W. Rare earth element and yttrium compositions of Archean and Paleoproterozoic Fe formations revisited: New perspectives on the significance and mechanisms of deposition. *Geochim. Cosmochim. Acta* **2010**, *74*, 6387–6405. [[CrossRef](#)]
24. Konhauser, K.O.; Planavsky, N.J.; Hardisty, D.S.; Robbins, L.J.; Warchola, T.J.; Haugaard, R.; Lalonde, S.V.; Partin, C.A.; Oonk, P.B.; Tsikos, H. Iron formations: A global record of Neoproterozoic to Palaeoproterozoic environmental history. *Earth Sci. Rev.* **2017**, *172*, 140–177. [[CrossRef](#)]
25. Alibert, C.; McCulloch, M.T. Rare earth element and neodymium isotopic compositions of the banded iron-formations and associated shales from Hamersley, Western Australia. *Geochim. Cosmochim. Acta* **1993**, *57*, 187–204. [[CrossRef](#)]
26. Hansel, C.M.; Benner, S.G.; Neiss, J.; Dohnalkova, A.; Kukkadapu, R.K.; Fendorf, S. Secondary mineralization pathways induced by dissimilatory iron reduction of ferrihydrite under advective flow. *Geochim. Cosmochim. Acta* **2003**, *67*, 2977–2992. [[CrossRef](#)]
27. Li, W.; Jin, X.; Gao, B.; Wang, C.; Zhang, L. Analysis of ultra-low level rare earth elements in magnetite samples from banded iron formations using HR-ICP-MS after chemical separation. *Anal. Methods* **2014**, *6*, 6125–6132. [[CrossRef](#)]
28. Chung, D.; Zhou, M.-F.; Gao, J.-F.; Chen, W.T. In-situ LA-ICP-MS trace elemental analyses of magnetite: The late Palaeoproterozoic Sokoman Iron Formation in the Labrador Trough, Canada. *Ore Geol. Rev.* **2015**, *65*, 917–928. [[CrossRef](#)]
29. Gourcerol, B.; Thurston, P.; Kontak, D.; Côté-Mantha, O. Interpretations and implications of LA ICP-MS analysis of chert for the origin of geochemical signatures in banded iron formations (BIFs) from the Meadowbank gold deposit, Western Churchill Province, Nunavut. *Chem. Geol.* **2015**, *410*, 89–107. [[CrossRef](#)]
30. Gourcerol, B.; Kontak, D.J.; Thurston, P.C.; Duparc, Q. Do magnetite layers in algonia-type Banded Iron Formations (BIF) preserve their primary geochemical signature? A case study of samples from three archaean BIF-hosted gold deposits. *Canad. Mineral.* **2016**, *54*, 605–624. [[CrossRef](#)]
31. Ghosh, R.; Baidya, T.K. Mesoarchean BIF and iron ores of the Badampahar greenstone belt, Iron Ore Group, East Indian Shield. *J. Asian Earth Sci.* **2017**, *150*, 25–44. [[CrossRef](#)]
32. Sun, X.; Zhu, X.; Tang, H.; Luan, Y. In situ LA-ICP-MS trace element analysis of magnetite from the late Neoproterozoic Gongchangling BIFs, NE China: Constraints on the genesis of high-grade iron ore. *Geol. J.* **2018**, *53*, 8–20. [[CrossRef](#)]
33. Keyser, W.; Ciobanu, C.L.; Cook, N.J.; Johnson, G.; Feltus, H.; Johnson, S.; Dmitrijeva, M.; Ehrig, K.; Nguyen, P.T. Petrography and trace element signatures of iron-oxides in deposits from the Middleback Ranges, South Australia: From banded iron formation to ore. *Ore Geol. Rev.* **2018**, *93*, 337–360. [[CrossRef](#)]

34. Meloux, J.; Bigot, M.; Viland, J. *Plan Minéral de la République Populaire du Congo*; BRGM: Orléans, France, 1986.
35. Schlüter, T. *Geological Atlas of Africa. With Notes on Stratigraphy, Tectonics, Economic Geology, Geohazards, Geosites and Geoscientific Education of Each Country*; Springer-Verlag: Berlin, Germany, 2008; p. 307.
36. Dadet, P. *Notice Explicative de la Carte Géologique de la République du Congo Brazzaville au 1/500 000: Zone Comprise entre les Parallèles 2 et 5 Sud*; Éditions BRGM: Orléans, France, 1969.
37. Desthieux, F. *Notice Explicative de la Carte Géologique de la République du Congo au 1/1.000.000*; Ministère des Mines et de L'énergie. Direction Générale des Mines: Brazzaville, République du Congo, 1993; p. 27.
38. Feybesse, J.; Johan, V.; Triboulet, C.; Guerrot, C.; Mayaga-Mikolo, F.; Bouchot, V.; N'dong, J.E. The West Central African belt: A model of 2.5–2.0 Ga accretion and two-phase orogenic evolution. *Precamb. Res.* **1998**, *87*, 161–216. [[CrossRef](#)]
39. Milesi, J.; Toteu, S.; Deschamps, Y.; Feybesse, J.; Lerouge, C.; Cocherie, A.; Penaye, J.; Tchameni, R.; Moloto-A-Kenguemba, G.; Kampunzu, H. An overview of the geology and major ore deposits of Central Africa: Explanatory note for the 1: 4,000,000 map. Geology and major ore deposits of Central Africa. *J. African Earth Sci.* **2006**, *44*, 571–595. [[CrossRef](#)]
40. Dorling, S. *Structural Geology of the Mbalam Iron Project*; Unpublished Technical Report; CSA Global: Perth, WA, Australia, 2011.
41. Gao, J.-F.; Zhou, M.-F.; Lightfoot, P.C.; Wang, C.Y.; Qi, L.; Sun, M. Sulfide saturation and magma emplacement in the formation of the Permian Huangshandong Ni-Cu sulfide deposit, Xinjiang, northwestern China. *Econ. Geol.* **2013**, *108*, 1833–1848. [[CrossRef](#)]
42. Liu, Y.; Hu, Z.; Gao, S.; Günther, D.; Xu, J.; Gao, C.; Chen, H. In situ analysis of major and trace elements of anhydrous minerals by LA-ICP-MS without applying an internal standard. *Chem. Geol.* **2008**, *257*, 34–43. [[CrossRef](#)]
43. Taylor, S.R.; McLennan, S.M. *The Continental Crust: Its Composition and Evolution*; Blackwell Scientific Publications: Hoboken, NY, USA, 1985; pp. 1–328.
44. Bau, M.; Koschinsky, A.; Dulski, P.; Hein, J.R. Comparison of the partitioning behaviours of yttrium, rare earth elements, and titanium between hydrogenetic marine ferromanganese crusts and seawater. *Geochim. Cosmochim. Acta* **1996**, *60*, 1709–1725. [[CrossRef](#)]
45. Bau, M.; Schmidt, K.; Koschinsky, A.; Hein, J.; Kuhn, T.; Usui, A. Discriminating between different genetic types of marine ferro-manganese crusts and nodules based on rare earth elements and yttrium. *Chem. Geol.* **2014**, *381*, 1–9. [[CrossRef](#)]
46. Ganno, S.; Ngnotue, T.; Djibril Kouankap, N.G.D.; Nzenti, J.P.; Notsa Fokeng, M. Petrology and geochemistry of the banded iron-formations from Ntem complex greenstones belt, Elom area, Southern Cameroon: Implications for the origin and depositional environment. *Chem Erde.* **2015**, *75*, 375–387.
47. Rudnick, R.; Gao, S. Composition of the continental crust. *Treatise Geochem.* **2003**, *3*, 1–64.
48. Sun, S.-S.; McDonough, W.F. *Chemical and Isotopic Systematics of Oceanic Basalts: Implications for Mantle Composition and Processes*; Special Publications; Geological Society: London, UK, 1989; Volume 42, pp. 313–345.
49. McLennan, S.M. Rare earth elements in sedimentary rocks: Influence of provenance and sedimentary processes. *Geochem. Mineral. Rare Earth Elements Rev. Mineral.* **2018**, *21*, 169–200.
50. Rao, T.G.; Naqvi, S. Geochemistry, depositional environment and tectonic setting of the BIF's of the late Archaean Chitradurga schist belt, India. *Chem. Geol.* **1995**, *121*, 217–243. [[CrossRef](#)]
51. Kato, Y.; Kawakami, T.; Kano, T.; Kunugiza, K.; Swamy, N. Rare-earth element geochemistry of banded iron formations and associated amphibolite from the Sargur belts, south India. *J. Southeast. Asian Earth Sci.* **1996**, *14*, 161–164. [[CrossRef](#)]
52. Klein, C. Some Precambrian banded iron-formations (BIFs) from around the world: Their age, geologic setting, mineralogy, metamorphism, geochemistry, and origins. *Am. Mineral.* **2005**, *90*, 1473–1499. [[CrossRef](#)]
53. Ohmoto, H. Nonredox transformations of magnetite-hematite in hydrothermal systems. *Econ. Geol.* **2003**, *98*, 157–161. [[CrossRef](#)]
54. Posth, N.R.; Köhler, I.; Swanner, E.D.; Schröder, C.; Wellmann, E.; Binder, B.; Konhäuser, K.O.; Neumann, U.; Berthold, C.; Nowak, M. Simulating Precambrian banded iron formation diagenesis. *Chem. Geol.* **2013**, *362*, 66–73. [[CrossRef](#)]
55. Thurston, P.; Kamber, B.; Whitehouse, M. Archean cherts in banded iron formation: Insight into Neoproterozoic ocean chemistry and depositional processes. *Precamb. Res.* **2012**, *214*, 227–257. [[CrossRef](#)]
56. Ayres, D. Genesis of iron-bearing minerals in banded iron formation mesobands in the Dales Gorge Member, Hamersley Group, Western Australia. *Econ. Geol.* **1972**, *67*, 1214–1233. [[CrossRef](#)]
57. Ewers, W.; Morris, R. Studies of the Dales Gorge member of the Brockman iron formation, Western Australia. *Econ. Geol.* **1981**, *76*, 1929–1953. [[CrossRef](#)]
58. Ahn, J.H.; Buseck, P.R. Hematite nanospheres of possible colloidal origin from a Precambrian banded iron formation. *Science* **1990**, *250*, 111–113. [[CrossRef](#)]
59. Morris, R. Genetic modelling for banded iron-formation of the Hamersley Group, Pilbara Craton, Western Australia. *Precamb. Res.* **1993**, *60*, 243–286. [[CrossRef](#)]
60. Smith, A.J.; Beukes, N.J.; Gutzmer, J. The composition and depositional environments of Mesoproterozoic iron formations of the West Rand Group of the Witwatersrand Supergroup, South Africa. *Econ. Geol.* **2013**, *108*, 111–134. [[CrossRef](#)]
61. Bau, M.; Alexander, B.W. Distribution of high field strength elements (Y, Zr, REE, Hf, Ta, Th, U) in adjacent magnetite and chert bands and in reference standards FeR-3 and FeR-4 from the Temagami iron-formation, Canada, and the redox level of the Neoproterozoic ocean. *Precamb. Res.* **2009**, *174*, 337–346. [[CrossRef](#)]
62. Ghosh, R.; Baidya, T.K. Using BIF magnetite of the Badampahar greenstone belt, Iron Ore Group, East Indian Shield to reconstruct the water chemistry of a 3.3–3.1 Ga sea during iron oxyhydroxides precipitation. *Precamb. Res.* **2017**, *301*, 102–112. [[CrossRef](#)]



63. Dare, S.A.; Barnes, S.-J.; Beaudoin, G.; Méric, J.; Boutroy, E.; Potvin-Doucet, C. Trace elements in magnetite as petrogenetic indicators. *Miner. Depos.* **2014**, *49*, 785–796. [[CrossRef](#)]
64. Dupuis, C.; Beaudoin, G. Discriminant diagrams for iron oxide trace element fingerprinting of mineral deposit types. *Miner. Depos.* **2011**, *46*, 319–335. [[CrossRef](#)]
65. Wang, M.; Wang, W.; Liu, K.; Michalak, P.P.; Wei, K.; Hu, M. In-situ LA-ICP-MS trace elemental analyzes of magnetite: The Tieshan skarn Fe–Cu deposit, Eastern China. *Chem Erde.* **2017**, *77*, 169–181. [[CrossRef](#)]
66. McLennan, S.; Hemming, S.; McDaniel, D.; Hanson, G. Geochemical approaches to sedimentation, provenance, and tectonics. *Spec. Papers Geol. Soc. Am.* **1993**, *284*, 21.
67. Bau, M.; Möller, P. Rare earth element systematics of the chemically precipitated component in Early Precambrian iron formations and the evolution of the terrestrial atmosphere-hydrosphere-lithosphere system. *Geochim. Cosmochim. Acta* **1993**, *57*, 2239–2249. [[CrossRef](#)]
68. Bau, M. Effects of syn- and post-depositional processes on the rare-earth element distribution in Precambrian iron-formations. *Eur. J. Mineral.* **1993**, *5*, 257–267. [[CrossRef](#)]
69. Arora, M.; Govil, P.; Charan, S.; Raj, B.U.; Manikyamba, C.; Chatterjee, A.; Naqvi, S. Geochemistry and origin of Archean banded iron-formation from the Bababudan Schist Belt, India. *Econ. Geol.* **1995**, *90*, 2040–2057. [[CrossRef](#)]
70. Basta, F.F.; Maurice, A.E.; Fontboté, L.; Favarger, P.-Y. Petrology and geochemistry of the banded iron formation (BIF) of Wadi Karim and Um Anab, Eastern Desert, Egypt: Implications for the origin of Neoproterozoic BIF. *Precamb. Res.* **2011**, *187*, 277–292. [[CrossRef](#)]
71. Bolhar, R.; Kamber, B.S.; Moorbath, S.; Fedo, C.M.; Whitehouse, M.J. Characterisation of early Archean chemical sediments by trace element signatures. *Earth Planet. Sci. Lett.* **2004**, *222*, 43–60. [[CrossRef](#)]
72. Cox, G.M.; Halverson, G.P.; Minarik, W.G.; Le Heron, D.P.; Macdonald, F.A.; Bellefroid, E.J.; Strauss, J.V. Neoproterozoic iron formation: An evaluation of its temporal, environmental and tectonic significance. *Chem. Geol.* **2013**, *362*, 232–249. [[CrossRef](#)]
73. Gurvich, E.G. *Metalliferous Sediments of the World Ocean: Fundamental Theory of Deep-Sea Hydrothermal Sedimentation*; Springer: Berlin, Germany, 2006.
74. Klein, C.; Beukes, N.J. Geochemistry and sedimentology of a facies transition from limestone to iron-formation deposition in the early Proterozoic Transvaal Supergroup, South Africa. *Econ. Geol.* **1989**, *84*, 1733–1774. [[CrossRef](#)]
75. Douville, E.; Bienvenu, P.; Charlou, J.L.; Donval, J.P.; Fouquet, Y.; Appriou, P.; Gamo, T. Yttrium and rare earth elements in fluids from various deep-sea hydrothermal systems. *Geochim. Cosmochim. Acta* **1999**, *63*, 627–643. [[CrossRef](#)]
76. Bau, M.; Dulski, P. Comparing yttrium and rare earths in hydrothermal fluids from the Mid-Atlantic Ridge: Implications for Y and REE behaviour during near-vent mixing and for the Y/Ho ratio of Proterozoic seawater. *Chem. Geol.* **1999**, *155*, 77–90. [[CrossRef](#)]
77. Yang, X.-Q.; Zhang, Z.-H.; Duan, S.-G.; Zhao, X.-M. Petrological and geochemical features of the Jingtieshan banded iron formation (BIF): A unique type of BIF from the Northern Qilian Orogenic Belt, NW China. *J. Asian Earth Sci.* **2015**, *113*, 1218–1234. [[CrossRef](#)]
78. Alexander, B.W.; Bau, M.; Andersson, P.; Dulski, P. Continentally-derived solutes in shallow Archean seawater: Rare earth element and Nd isotope evidence in iron formation from the 2.9 Ga Pongola Supergroup, South Africa. *Geochim. Cosmochim. Acta* **2008**, *72*, 378–394. [[CrossRef](#)]
79. Bhattacharya, H.; Chakraborty, I.; Ghosh, K.K. Geochemistry of some banded iron-formations of the Archean supracrustals, Jharkhand-Orissa region, India. *J. Earth Syst. Sci.* **2007**, *116*, 245–259. [[CrossRef](#)]
80. Bordage, A.; Balan, E.; de Villiers, J.P.; Cromarty, R.; Juhin, A.; Carvallo, C.; Calas, G.; Raju, P.S.; Glatzel, P. V oxidation state in Fe–Ti oxides by high-energy resolution fluorescence-detected X-ray absorption spectroscopy. *Phys. Chem. Miner.* **2011**, *38*, 449–458. [[CrossRef](#)]
81. Nadoll, P.; Angerer, T.; Mauk, J.L.; French, D.; Walshe, J. The chemistry of hydrothermal magnetite: A review. *Ore Geol. Rev.* **2014**, *61*, 1–32. [[CrossRef](#)]
82. Toplis, M.J.; Corgne, A. An experimental study of element partitioning between magnetite, clinopyroxene and iron-bearing silicate liquids with particular emphasis on vanadium. *Contrib. Mineral. Petrol.* **2002**, *144*, 22–37. [[CrossRef](#)]
83. Michard, A.; Albarede, F.; Michard, G.; Minster, J.; Charlou, J. Rare-earth elements and uranium in high-temperature solutions from East Pacific Rise hydrothermal vent field (13 N). *Nature* **1983**, *303*, 795. [[CrossRef](#)]
84. Alibo, D.S.; Nozaki, Y. Rare earth elements in seawater: Particle association, shale-normalization, and Ce oxidation. *Geochim. Cosmochim. Acta* **1999**, *63*, 363–372. [[CrossRef](#)]