



HAL
open science

Beyond INSPIRE and opendata, review of some challenges and opportunities that Public Agencies are facing in Geo-Environmental data infrastructures

François Robida

► To cite this version:

François Robida. Beyond INSPIRE and opendata, review of some challenges and opportunities that Public Agencies are facing in Geo-Environmental data infrastructures. INSPIRE Conference 2016, Sep 2016, Barcelone, Spain. hal-01355129

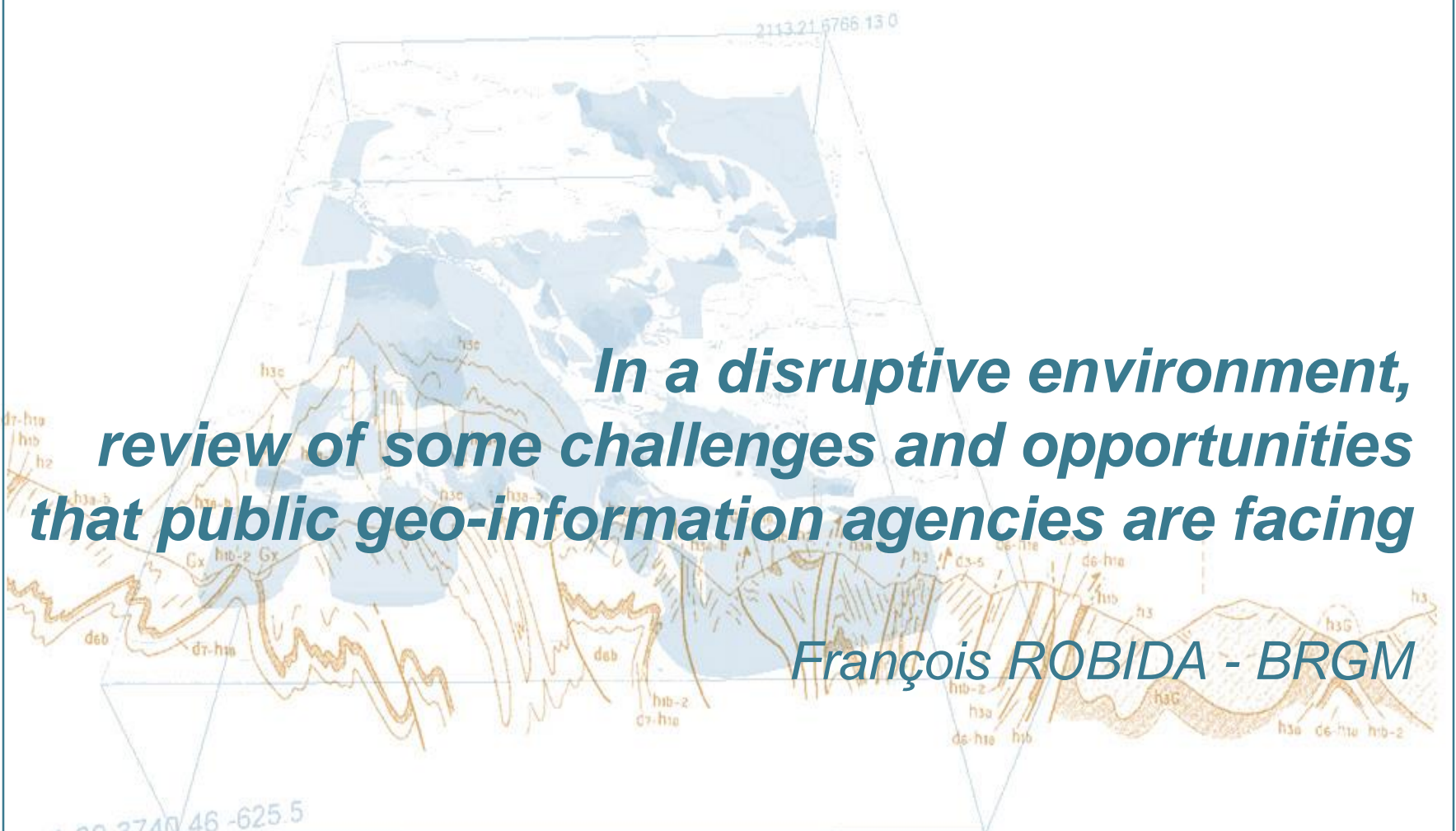
HAL Id: hal-01355129

<https://brgm.hal.science/hal-01355129>

Submitted on 14 Oct 2016

HAL is a multi-disciplinary open access archive for the deposit and dissemination of scientific research documents, whether they are published or not. The documents may come from teaching and research institutions in France or abroad, or from public or private research centers.

L'archive ouverte pluridisciplinaire **HAL**, est destinée au dépôt et à la diffusion de documents scientifiques de niveau recherche, publiés ou non, émanant des établissements d'enseignement et de recherche français ou étrangers, des laboratoires publics ou privés.



***In a disruptive environment,
review of some challenges and opportunities
that public geo-information agencies are facing***

François ROBIDA - BRGM

3740 46 -625.5



INSPIRE Conference 2016
Barcelona, 26th - 30th September



Géosciences pour une Terre durable
brgm

Digital transformation



Agenda

1. Our mission of public geo-environment agencies
2. Challenges of a disruptive environment
3. Some tracks towards a bright future !

Agenda

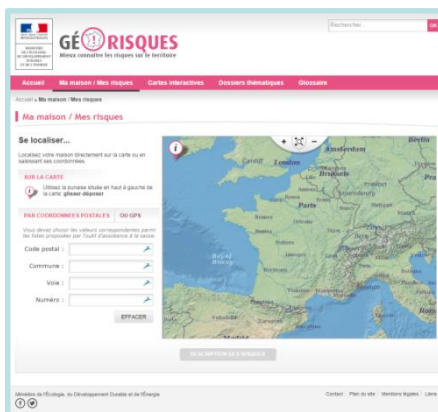
1. Our mission of public geo-environment agencies
2. Challenges of a disruptive environment
3. Some tracks towards a bright future !

Public geo-information agencies

- > Geological surveys, Mapping agencies, Met agencies, Stats agencies
- > A mission : to produce, manage and deliver **reference data** (+information) for all types of users (public, private, citizen)
- > Reference data
 - trusted
 - up to date
 - widely used, and referenced...
 - visible, accessible, understandable, and credible to information users
 - authoritative ???

What we (geol surveys) have done in the last 15 years

- Engaged the development of interoperable thematic data infrastructures
- To give access to public data about our subsurface environment
- Based on our national mission
- Built upon international standards (OGC, GeoScML,...)
- Strongly supported the design and implementation of INSPIRE
- Contributed to the development of tools/apps to access / re-use « our » data



Some of the geoscience data infrastructures based on those principles



EG
S C O

Tomorrow, "inspired"
business as usual ???



Research Infrastructure and E-Science for Data and Observations of Earthquakes, Volcanoes, Surface Dynamics and Tectonics



Agenda

1. Our mission of public geo-environment agencies
2. Challenges of a disruptive environment
3. Some tracks towards a bright future !

A disruptive environment new rules

- > The Open Data wave

Disruption of the economic
model of some actors

Everything is (almost) accessible
to anyone to create products
and services

- > *And not ties for G8 meetings...*

A disruptive environment

new players

> Citizen science / Citizen observatories / crowdsourcing

Conferenza Internazionale

Citizen Science Management

7-10 Giugno 2016 - Venezia

« Authoritative » data
vs
openxxx

con l'alto patrocinio di



European Commission

MINISTERO DELL'AMBIENTE
E DELLA TUTELA DEL TERRITORIO E DEL MARE

PROTEZIONE CIVILE
NAZIONALE



A disruptive environment

New players

> Production of data by industry : google



Authoritative data
vs
Industry datasets

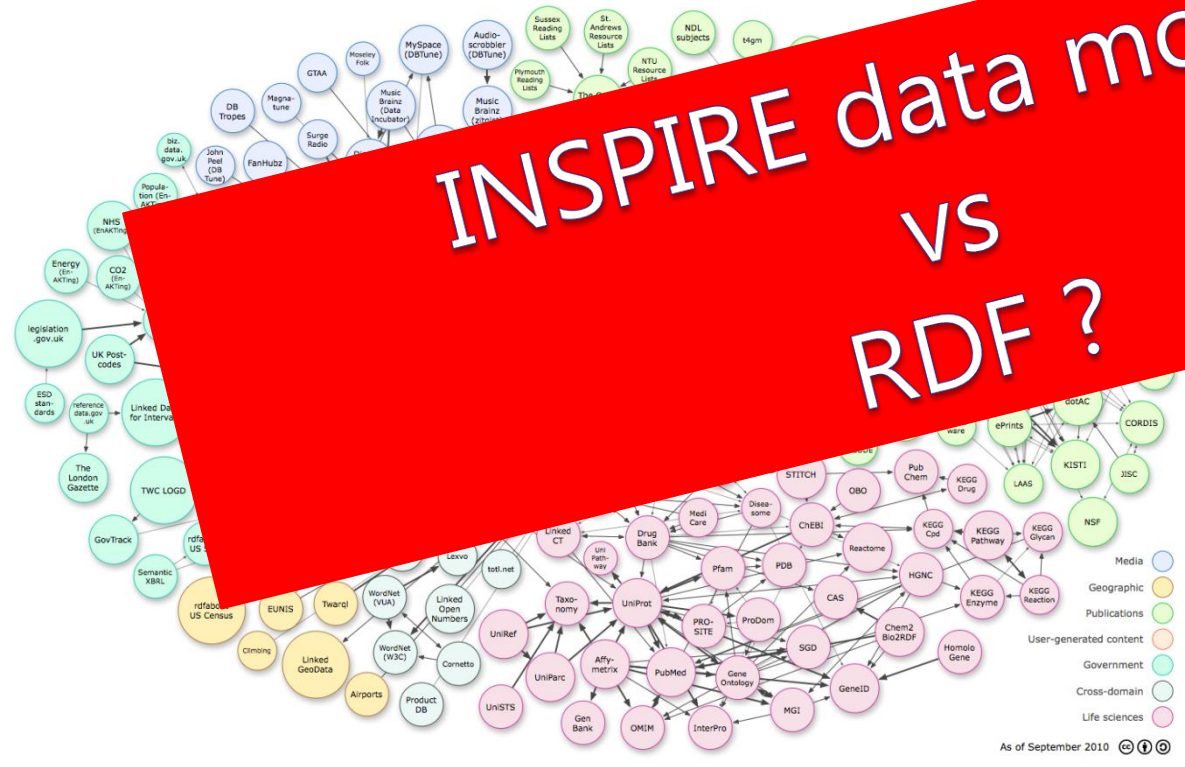
... a public
... with almost 10
... that have been vetted
... organized. The company has 6
million drill holes that are being
processed into that database.”

A disruptive environment

New technologies / paradigms

➤ Semantic web / Linked data

INSPIRE data models
vs
RDF ?



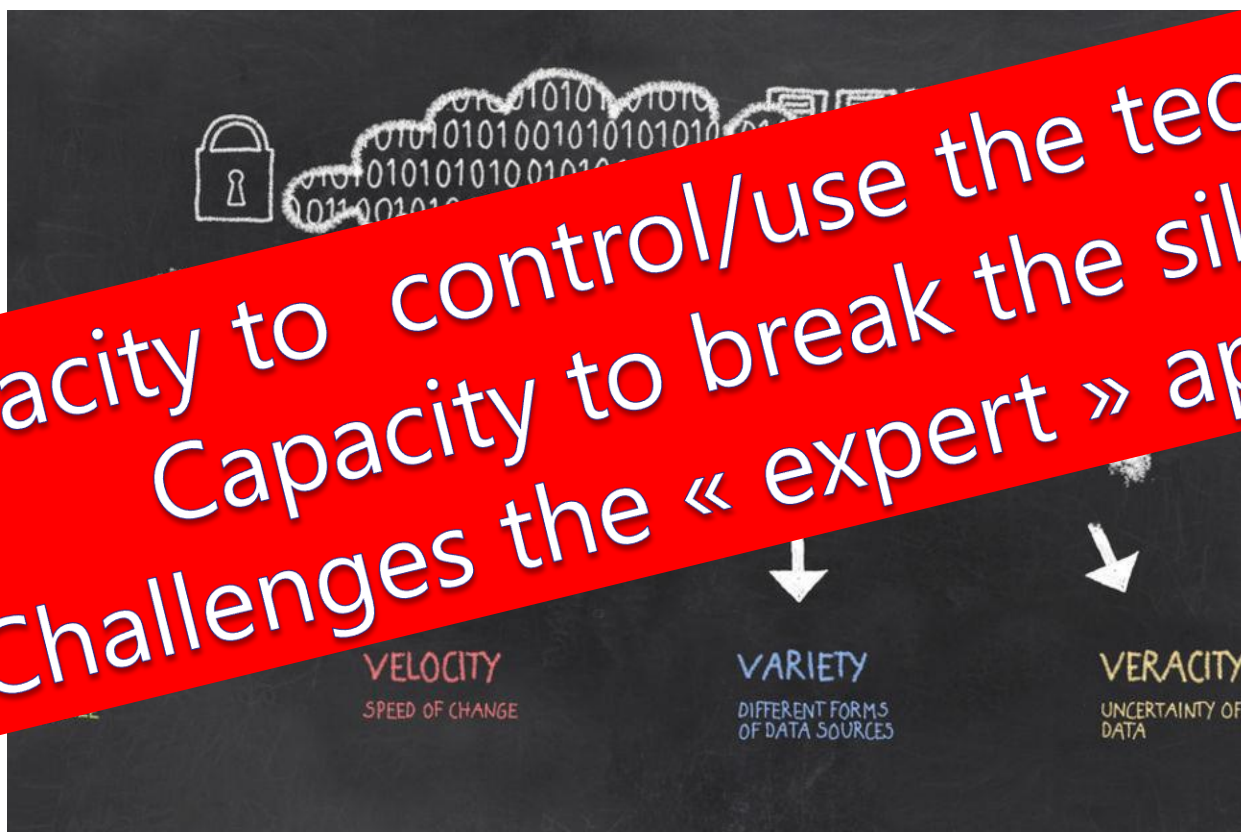
As of September 2010



A disruptive environment

New technologies / paradigms

> Big data



Capacity to control/use the technology
Capacity to break the silos
Challenges the « expert » approach

Géosciences pour une Terre durable

brgm

A disruptive environment

New technologies / paradigms

➤ Cloud

A [European Open Science Cloud \(EOSC\)](#) will offer Europe's 1.7 million researchers and 70 million science and technology professionals a shared environment to store, share and analyse large volumes of information in the digital data revolution.

EUROPEAN
CLOUD INITIATIVE
UNLOCKING THE POWER OF
BIG DATA FOR OPEN SCIENCE

Local vs shared infrastructures
Public / private

AWS Cloud Credits for Research

The AWS Cloud Credits for Research Program (formerly AWS Research Grants) supports researchers who seek to:



And at the end...

> the winner is



- Copernicus/Sentinel...?
- A unique capacity to monetize services

> What about our capacity to keep the control/access of the data necessary for the performance of public policies ?

Agenda

1. Our mission of public geo-environment agencies
2. Challenges of a disruptive environment
3. **Some tracks towards a bright future !**

The « reality » of public agencies

> Our strengths

- **Expertise on data**
- Independence of economic interests
- Understanding of users needs (???)

> Our weaknesses

- **Silos**
- « Over quality » syndrome (experts know what is good)
- Ignorance of our real challengers...
- Capacity to attract and keep expertise (data scientists...)

Some possible orientations for our future...

- to be the “**reference point**” of expertise about data of our domain (**trusted third party**)
- do not be limited to a role of data curators
- be active in development of **standards** (user oriented)
- invest on understanding of **usages and needs**
- make sense of data (**data science**)
- provide added value on data (**services**)
- develop public-private partnerships in a framework that guarantees the “public interest”, for instance co-operating platforms for specific domains (ie for smart cities or infrastructures)
- **Strengthen our capacity to act in collaborative environments,**
- **Based on sustainable and balanced governance and economic arrangements**



Thank you for your attention

François ROBIDA
f.robida@brgm.fr

www.brgm.fr

