



HAL
open science

Environmental forensics in groundwater coupling passive sampling and high resolution mass spectrometry for screening

Coralie Soulier, Charlotte Coureau, Anne Togola

► To cite this version:

Coralie Soulier, Charlotte Coureau, Anne Togola. Environmental forensics in groundwater coupling passive sampling and high resolution mass spectrometry for screening. *Science of the Total Environment*, 2016, 563-564, 10.1016/j.scitotenv.2016.01.056 . hal-01342466

HAL Id: hal-01342466

<https://brgm.hal.science/hal-01342466>

Submitted on 6 Jul 2016

HAL is a multi-disciplinary open access archive for the deposit and dissemination of scientific research documents, whether they are published or not. The documents may come from teaching and research institutions in France or abroad, or from public or private research centers.

L'archive ouverte pluridisciplinaire **HAL**, est destinée au dépôt et à la diffusion de documents scientifiques de niveau recherche, publiés ou non, émanant des établissements d'enseignement et de recherche français ou étrangers, des laboratoires publics ou privés.



Distributed under a Creative Commons Attribution - NonCommercial 4.0 International License

Environmental forensics in groundwater coupling passive sampling and high resolution mass spectrometry for screening

Coralie Soulier, Charlotte Coureau and Anne Togola

BRGM Laboratory Division, 3 avenue C. Guillemin, 45100 Orléans, FRANCE

E-mail contact: c.soulier@brgm.fr

Abstract

One of the difficulties encountered when monitoring groundwater quality is low and fluctuating concentration levels and complex mixtures of micropollutants, including emerging substances or transformation products. Combining passive sampling techniques with analysis by high resolution mass spectrometry (HRMS) should improve environmental metrology. Passive samplers accumulate compounds during exposure, which improves the detection of organic compounds and integrates pollution fluctuations. The Polar Organic Chemical Integrative Sampler (POCIS) were used in this study to sequester polar to semi-polar compounds. The methodology described here improves our knowledge of environmental pollution by highlighting and identifying pertinent compounds to be monitored in groundwater.

The advantage of combining these two approaches is demonstrated on two different sites impacted by agricultural and/or urban pollution sources where groundwater was sampled for several months. Grab and passive sampling were done and analyzed by liquid chromatography coupled to a hybrid quadrupole time-of-flight mass spectrometer (LC-QTOF). Various data processing approaches were used (target, suspect and non-target screening). Target screening was based on research from compounds listed in a homemade database and suspect screening used a database compiled using literature data. The non-target screening was done using statistical tools such as principal components analysis (PCA) with direct connections between original chromatograms and ion intensity. Trend plots were used to highlight relevant compounds for their identification.

The advantage of using POCIS to improve screening of polar organic compounds was demonstrated. Compounds undetected in water samples were detected with these tools. The subsequent data processing identified sentinel molecules, molecular clusters as compounds never revealed in these sampling sites, and molecular fingerprints. Samples were compared and multidimensional visualization of chemical patterns such as molecular fingerprints and recurrent or specific markers of each site were given.

1 Keywords: target screening, suspect screening, non-target screening, High Resolution Mass Spectrometry,
2 POCIS, Time-of-Flight

3 **1 Introduction**

4 Many micropollutants in the aquatic environment come from human and animal sources such as wastewater
5 treatment plants, septic tanks, landfills, sewers, livestock and agricultural activities, etc. (Focazio et al.,
6 2008; Mueller et al., 2011). More than 10,000 chemicals are registered under the European Union's REACH
7 (Registration, Evaluation, Authorisation and Restriction of Chemicals) regulation (Directive REACH
8 2006/1907, 2006REACH 1907) and these can reach aquatic systems. These chemicals represent a wide
9 range of physico-chemical properties and have different impacts in term of toxicity and potential harm. Only
10 some of them are regulated in Europe for water pollution assessments by the Water Framework Directive
11 (Directive 2000/60/EC, Directive 2000/60/EC, 2000). A text dealing specifically with groundwater
12 protection from pollution and deterioration was written in 2006 (Directive 2006/118/EC, 2006Directive
13 2006/118/EC of the European Parliament and of the Council on the protection of groundwater against
14 pollution and deterioration.) and revised in 2014 (Directive 2014/80/EU, Directive 2014/80/EU, 2014). In
15 addition to these regulated compounds, others such as pharmaceutical compounds (PhACs), pesticides,
16 personal care products (PCPs), endocrine disrupting compounds, surfactants, perfluorinated compounds, and
17 industrial agents, which are known as emerging contaminants, are also detected in environmental samples
18 (Bletsou et al., 2015; Lopez et al., 2015). Furthermore, regulated and non-regulated compounds can be
19 degraded by various biotic and abiotic processes to form transformation products (TPs) that might be more
20 persistent and toxic than their parent compounds and should be taken into consideration in environmental
21 risk assessments (Escher and Fenner, 2011).

22 One challenge facing the scientific community is how to improve environmental monitoring. Whereas triple
23 quadrupole analyzers currently enable us to seek only a pre-defined list of compounds in samples, new
24 methodologies such as high resolution mass spectrometry (HRMS) enable comprehensive screening.
25 Coupled with high pressure liquid chromatography (HPLC), HRMS makes it possible to detect, in one
26 injection of a sample, several thousand compounds without pre-selection. Nevertheless, the physico-
27 chemical properties range of organic compounds detected or identified with this technique is limited by
28 sample pretreatment, chromatographic or ionization conditions. All of the detectable information is recorded
29 and enables an *a posteriori* data search. HRMS is an analytical technique which allows identifying
30 compounds and provides a level of confidence on target and non-target screening based on mass accuracy
31 (Hug et al., 2014; Martinez Bueno et al., 2012). The quadrupole time-of-flight (QTOF) analyzer can be used
32 in environmental analysis both for identifying TPs (Boix et al., 2014; Durand et al., 2006; Ibanez et al.,
33 2006; Jelic et al., 2013) and for screening (Ferrer and Thurman, 2012; Guibal et al., 2015; Hernandez et al.,
34 2015; Ibanez et al., 2005; Leendert et al., 2015).

1 The second constraint with regard to micropollutants is that they are present in the environment in mixtures
2 at sub-ppb concentrations and at variable times and locations. Water samples are usually collected by spot
3 sampling, which provides merely a snapshot of contamination at a given time and place. Better knowledge
4 of these variables or of episodic pollution requires a multiplication of sample collection in time and space.
5 To overcome these limitations passive sampling devices are able to provide time weighted average (TWA)
6 concentrations, which are averaged concentrations over the exposure time of this type of tool (Vrana et al.,
7 2005). They simplify sampling and decrease the conventional limit of detection (LOD) of the sampled
8 compound. Polar Organic Chemical Integrative Samplers (POCIS) can be used for polar compounds such as
9 pesticides, PhACs and steroids. These integrative passive samplers can remain in the aqueous medium for
10 over two months (Vrana et al., 2005). Numerous compounds such as Polycyclic Aromatic Hydrocarbons
11 (Tapie et al., 2011), pesticides (Alvarez et al., 2004; Berho et al., 2013; Guibal et al., 2015; Ibrahim et al.,
12 2013a; Mazzella et al., 2007), alkylphenols (Arditsoglou and Voutsas, 2008; Harman et al., 2009; Li et al.,
13 2010), PhACs (Bartelt-Hunt et al., 2009; Martínez Bueno et al., 2009; Metcalfe et al., 2011; Togola and
14 Budzinski, 2007), and perfluorinated compounds (Kovarova et al., 2012) have been detected with POCIS in
15 various aquatic systems.

16 Using POCIS to improve conventional LOD coupled with LC-HRMS should improve the screening of
17 micropollutants in aquatic samples. To our knowledge, only the published work of Guibal and co-workers
18 deals with the combination of passive sampler and LC-HRMS (Guibal et al., 2015). Our study used POCIS
19 to screen polar organic compounds in environmental samples, implemented a workflow for HRMS data
20 processing, and applied it to two groundwater sites.

21 **2 Materials and methods**

22 **2.1 Chemicals and reagents**

23 Analytical standards (purity >98%) were purchased from Cluzeau Info Labo (CIL, Sainte-Foy-La Grande,
24 France), TechLab (Metz, France), Sigma-Aldrich (Saint-Quentin Fallavier, France), and LGC standard
25 (Molsheim, France).

26 The acetonitrile and methanol (HPLC grade) used for extraction were purchased from Fisher Chemical
27 (Ilkirch, France). Ultrapure water was produced using a Millipore Direct-Ultrapure Water System. Oasis®
28 HLB (divinylbenzene/N-vinylpyrrolidone copolymer) extraction cartridges (500 mg, 6cc, 60 µm) were
29 purchased from Waters Corporation (Guyancourt, France). Empty polypropylene SPE tubes with
30 polyethylene frits were supplied by Supelco (Saint-Quentin Fallavier, France). The POCIS were purchased
31 from Exposmeter SA (Tavelsjö, Sweden). Their pharmaceutical configuration consists of two 0.1-µm
32 PolyEther Sulfone (PES) membranes containing OASIS® HLB sorbent.

1 The solvents used for the HPLC-HRMS analysis included acetonitrile and water (UPLC/MS grade)
2 purchased from Biosolve (Dieuze, France), and formic acid (99%, LC/MS grade) purchased from Avantor
3 (Deventer, the Netherlands). The lock mass used as an internal reference in the mass spectrometer's
4 ionization source, Leucine Enkephalin (LeuEnk), was purchased from Waters Corporation and the calibrant
5 for the mass spectrometer, sodium formate, was prepared with sodium hydroxide, purchased from Sigma
6 Aldrich.

7 **2.2 Sampling sites**

8 Groundwater was sampled at two sites in France over a period of several months in 2014. Grab and passive
9 sampling were done at the same time.

10 Site 1 is an alluvial aquifer impacted by diffuse agricultural pollution and urban effluents. Six successive
11 one-month sampling campaigns were done from July to December 2014. A grab sample was collected at the
12 beginning and end of each POCIS sampling campaign (7 samples). The POCISs were done in triplicate (18
13 samples).

14 Site 2 is an alluvial aquifer impacted only by diffuse agricultural pollution. Groundwater was sampled every
15 15 days from January to December 2014. A grab sample was collected at the beginning and the end of each
16 15-day POCIS sampling campaign (24 samples). The POCISs were done in triplicate (72 samples).

17 In order to compare results from these two sites, we took into account the same number of samples (n=6 for
18 water samples and n=18 for POCIS). Both sites have comparable conditions concerning water velocity (both
19 in alluvial plain). Temperature and pH were stable during exposure: 13.4 ± 2.3 °C and 7.2 ± 0.2 in site 1 and
20 12.8 ± 1.7 °C and 7.0 ± 0.2 in site 2.

21 **2.3 Samples treatment**

22 **2.3.1 Water analyses**

23 Water samples were extracted by solid-phase extraction (SPE) at neutral pH using the autotrace SPE
24 workstation (Caliper LifeSciences, Villepinte, France). The SPE procedure is described elsewhere (Berho et
25 al., 2013). SPE was done twice, once with methanol and once with acetonitrile elution, with Oasis® HLB
26 cartridges in order to increase the range of physico-chemical properties of sampled compounds and to
27 compare the results with those of passive sampling (POCIS).

28 One liter of sample was passed through the cartridge under vacuum at a flow rate of 20 mL/min. The
29 cartridges were then dried under vacuum for one hour before elution. The extracts obtained were evaporated
30 to 1 mL at a flow rate of 3 mL/min in a nitrogen stream and transferred into injection vials.

2.3.2 POCIS

POCIS extraction is described in detail elsewhere (Ibrahim et al., 2013b). After sorbent retrieval, elution was done with 8 mL of acetonitrile and then 8 mL of methanol. The eluate was reduced to 500 μ L in a gentle stream of nitrogen and transferred to an injection vial for analysis. Field blanks were treated in the same manner as the exposed POCIS.

2.4 HPLC-HRMS analysis

Chromatographic separation was done with a Waters Acquity UPLC I-Class system (Waters, Guyancourt, France) using a 150 mm \times 2.1 mm ACQUITY BEH C18 1.7 μ m column (Waters). A sample volume of 2 μ L was injected with an Acquity UPLC fixed loop autosampler. For positive ionization, the mobile phase was composed of solvent A (0.05 % formic acid in water) and solvent B (0.05 % formic acid in acetonitrile) at a constant flow of 0.5 mL/min. The initial amount of B was 2 % for 0.5 min and this increased linearly to 99 % in 18 min, followed by a 4 min isocratic mode and a rapid return to the initial conditions. These conditions were maintained until 2.5 min. The total run time was 25 min. Column and autosampler temperatures were maintained at 35 $^{\circ}$ C and 10 $^{\circ}$ C, respectively.

Mass spectrometry was done on a hybrid quadrupole time-of-flight mass spectrometer (XEVO G2S QTOF, Waters, Manchester, United Kingdom) using an electrospray ionization interface (ESI) operating in the positive ionization mode. MS data were acquired in centroid, resolution and MS^E modes over a m/z range of 50-1,200. Typical interface conditions were optimized for maximum intensity of the mixture of target compounds as follows: nebulizer and desolvation (drying gas) N₂ (from a nitrogen generator) flows were set at 900 and 50 L/h, respectively, and source block and desolvation temperatures were 120 and 600 $^{\circ}$ C, respectively. A cone voltage of 30 V and a capillary voltage of 0.5 kV were used. The collision gas was Argon (purity 99.9999 %) at a pressure of 1.3×10^{-4} mBar. The resolution of QTOF-MS was between 24,000 and 29,000 in resolution mode at m/z 556.2771 (positive ionization).

The MS^E mode creates two parallel alternating scan functions with different collision energies. Function 1 operates at a low collision energy (LE) of 6 eV, whereas Function 2 operates at a high collision energy (HE) with a ramp ranging from 6 to 45 eV. All mass spectra acquired at each collision energy from 6 to 45 eV overlap. All of the information concerning precursor and fragment ions was present on the high energy mass spectra. Functions 1 and 2 have scan time values and an inter-scan delay of 0.25 s and 0.015 s, respectively. This acquisition mode enables us to obtain precursor and fragment ions in one injection with no need to select the precursor ion as required in MS/MS experiments.

Sodium formate (0.5 mM), a 1/300 mixture of formic acid at 10 % with 0.5 mM sodium hydroxide in 90/10 2-propanol/water, enabled calibration from m/z 50-1,200. Mass calibration was done weekly using a reference pump connected directly to the interface at a flow rate of 20 μ L/min.

1 A lock mass, Leucine Enkephalin (LeuEnk, 1 ng/μL), was introduced into the interface through the lock
2 spray needle at a flow rate of 10 μL/min every 15 seconds during the injection. The lock spray capillary
3 voltage was 3 kV. The protonated form of LeuEnk (m/z 556.2771) was used to refocus the mass axis and
4 ensure a robust accurate mass measurement throughout the procedure (Hernandez et al., 2011). The potential
5 mass deviation was corrected automatically during the injection.

6 The data station was controlled by MassLynx software (v 4.1).

7 2.5 Databases

8 Information from chromatographs (retention time) and mass spectra (accurate mass, adducts, fragment ions)
9 enabled us to identify compounds. In order to facilitate and improve the reliability of the identification
10 process, two databases were used: a homemade database that we developed with an injected reference
11 standard and a database from the literature.

12 The first database, called the "target" database, contains more than 340 compounds analyzed in positive
13 ionization. The compounds were divided into four groups, each group containing several classes of
14 compounds. Pesticides and their TPs represent 62 % of the target compounds and include herbicides,
15 insecticides, fungicides, etc. PhACs and their TPs represent 33 % of these compounds and include
16 antibiotics, antiepileptics, analgesics/anti-inflammatories, cardiovascular agents, psycholeptics, etc. Three
17 percent of the target compounds are industrial compounds, while PCPs and their TPs represent 2 % ([Figure](#)
18 [1Figure 1](#)). The reference standards for all of these were injected and their retention times, adducts, accurate
19 masses and fragment ions were available.

20 The second database, which we call the "suspect" database, contains data from the literature for about 350
21 compounds analyzed with positive ionization. We focused, in our study, on the 280 for which fragment
22 information is available. Once again, we divided the compounds into four groups, each group containing
23 several classes of compounds. Pesticides and their TPs represent 61.3 % of the suspect compounds and
24 include herbicides, insecticides, fungicides, pesticides, etc. PhACs and their TPs represent 46.6 % of these
25 compounds and include antibiotics, antiepileptics, analgesics/ anti-inflammatories, cardiovascular agents,
26 psycholeptics, etc. Industrial compounds represent 0.4 % and PCPs and their TPs 1.8 % ([Figure 1Figure 1](#)).
27 Only the retention times are not available for the suspect database because there has been no injection of
28 reference standards with the analytical methodology used in this study. Target and suspect lists are similar
29 and around 60 compounds are found in both and therefore validate the data processing.

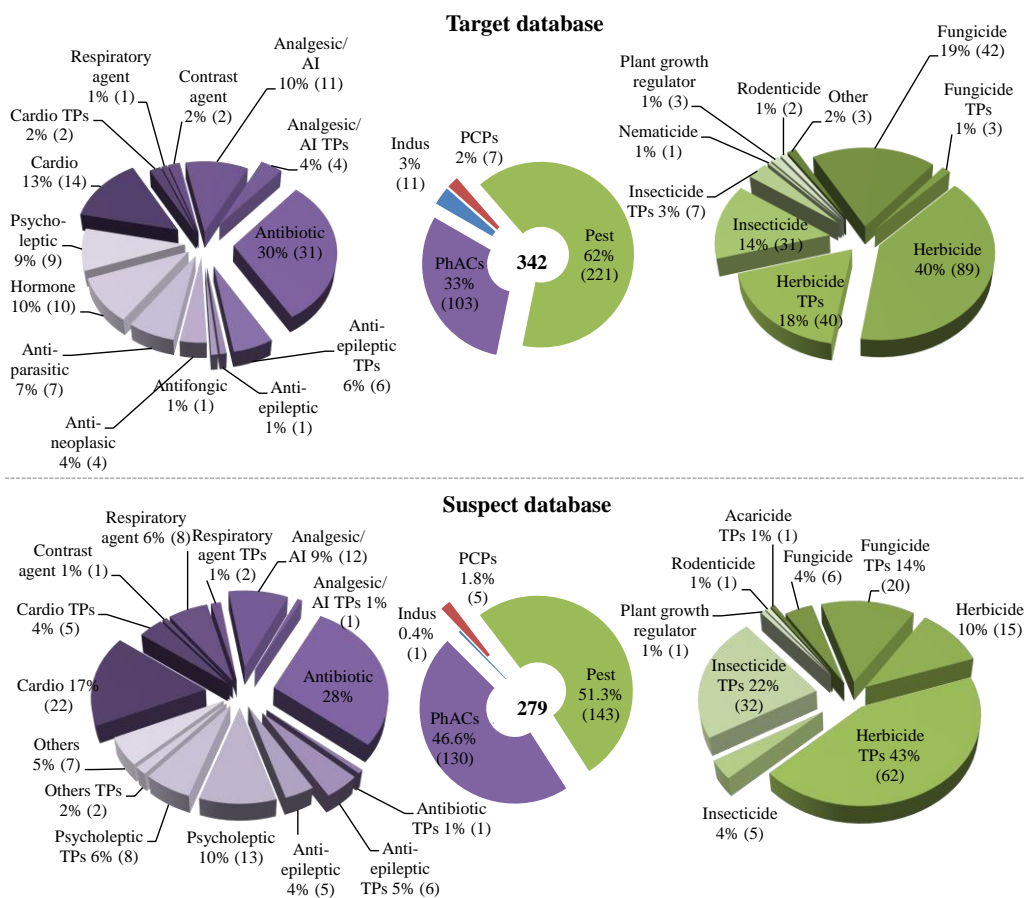


Figure 1: Details of organic compounds detected in positive ionization, in target and suspect databases. The compounds were divided into four groups, each group contained different classes of compounds where *Pest* is pesticides, *Indus* is industrial, *PhACs* is Pharmaceuticals compounds, *PCPs* is Personal Care Products, *Cardio* is cardiovascular agents, *TPs* is transformation products, and *AI* is anti-inflammatory. Numbers in brackets refer to the number of compounds in each group or class.

2.6 Data processing

Data were processed using the ChromaLynx XS Application Manager together with 2 homemade databases and MarkerLynx XS for non-target screening.

Identifying all of the organic compounds present in a sample is a laborious, difficult, and time consuming task especially when compounds are present at trace levels (Hernandez et al., 2012). As a result of the increased interest in suspect and non-target analysis, Schymanski and co-workers (Schymanski et al., 2014) have proposed a system of 5 identification confidence levels. Based on this system, we used three approaches or levels in this study (

Figure 2Figure 2Figure 2) in the ascending order of confidence: target, suspect and non-target.

Mis en forme : Non souligné, Français (France)

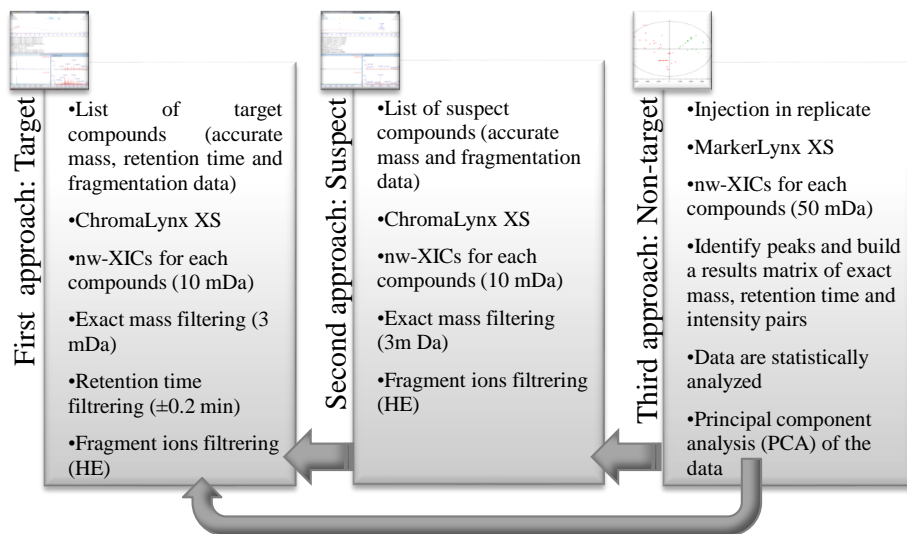


Figure 2: Data processing of environmental samples

2.6.1 Target and suspect screening

For both the target and suspect approaches, the ChromaLynx XS application was used in the target mode (targeted analysis with fragment ion confirmation) to extract exact mass chromatograms of compounds and fragments specified in the target database using narrow-window extracted ion chromatograms (nw-XICs) of approximately 10 mDa. To validate the identification, the target retention time tolerance was set at 0.2 min, and the mass accuracy at 3 mDa. The target and suspect approaches differ only in the databases used – the homemade target database and the literature-derived suspect database, respectively. Results from POCIS blanks were considered by comparison in terms of peaks intensity with samples. No identified compounds in samples were significantly present in blanks.

2.6.2 Non-target screening

To save time and minimize the difficulties involved when attempting to identify all non-attributed signals and to select relevant compounds, the MarkerLynx XS application was used for non-target screening. Results from POCIS blanks were not considered in this approach. This application manager uses statistics to preselect relevant compounds depending on the aim of a study. Samples must be injected in replicate, after which MarkerLynx XS compares them to others and identifies markers from large sample sets. Each marker is characterized by a retention time, an exact mass and an intensity. The application first detects chromatographic peaks using nw-XICs of 50 mDa and outputs a results matrix of exact mass, retention time and intensity pairs (under the name of markers). It then presents the results in tabular form and, finally, it conducts principal component analysis (PCA) on the data. The three main detection method parameters are peak width at 5 % height and peak to peak baseline noise, both of which were automatically determined, and the marker intensity threshold, which was set at 20,000 counts. The results appear as a list of markers found

1 in selected samples with accurate mass, retention time and intensity. After the aim of the study has been
2 identified, the data are analyzed by multivariate analysis and the results are presented in a report.

3 **3 Results and discussion**

4 **3.1 Advantages of POCIS for screening**

5 We used the same sorbent for both solid phase extraction (for water samples) and POCIS and the elution
6 conditions were very similar. This suggests that there should be little difference in the compounds
7 determined by the two methods. The sampling step is different – water samples were collected by grab
8 sampling (1 liter), which provides only a snapshot of contamination, whereas with POCIS, the sorbent might
9 be directly exposed for several days, weeks or months to the medium (Vrana et al., 2005), which
10 corresponds to several liters of extracted water.

11 Figure 3 presents the results of target compounds identified from POCIS (triplicate for the six sampling
12 periods, n=18) and water samples (for each sampling period, n=6) in site 1.

13 The proportion of the four classes of compounds is approximatively the same in the target database and
14 samples (water and POCIS) (Figure 3Figure 3). However, 65 compounds were identified in POCIS and only
15 35 in water samples. More pesticides and PhACs were identified in POCIS (e.g. herbicides (24 rather than
16 12) and their TPs (7 rather than 5), fungicides (10 rather than 3), and antibiotics (7 rather than 2). Some
17 compounds were only detected in POCIS (1 rodenticide, 2 hormones, 1 antiparasitic and 1 cardiovascular
18 agent) (Figure 3Figure 3).

19 Some compounds detected in water samples are not in POCIS. Bflubutamid, a hydrophobic herbicide (log
20 K_{ow} : 4.28), for example, was detected in all of the water samples (n=6) but never in POCIS (n=18), possibly
21 due to the presence of a PES membrane in POCIS, which is used to separate the sorbent from the sampled
22 medium and to control the mass transfer of analyte to the sorbent (Vrana et al., 2005). The diffusion
23 coefficient of hydrophobic compounds through the PES membrane is low (Harman et al., 2008; Vermeirssen
24 et al., 2012). They have a biphasic absorption in the PES membrane, pass through the water-filled pores of
25 the membrane and then through the polymer (Alvarez et al., 2007). In some cases, hydrophobic compounds
26 are present in the PES membrane and do not pass into the sorbent, which would explain why there is no
27 detection in POCIS extracts.

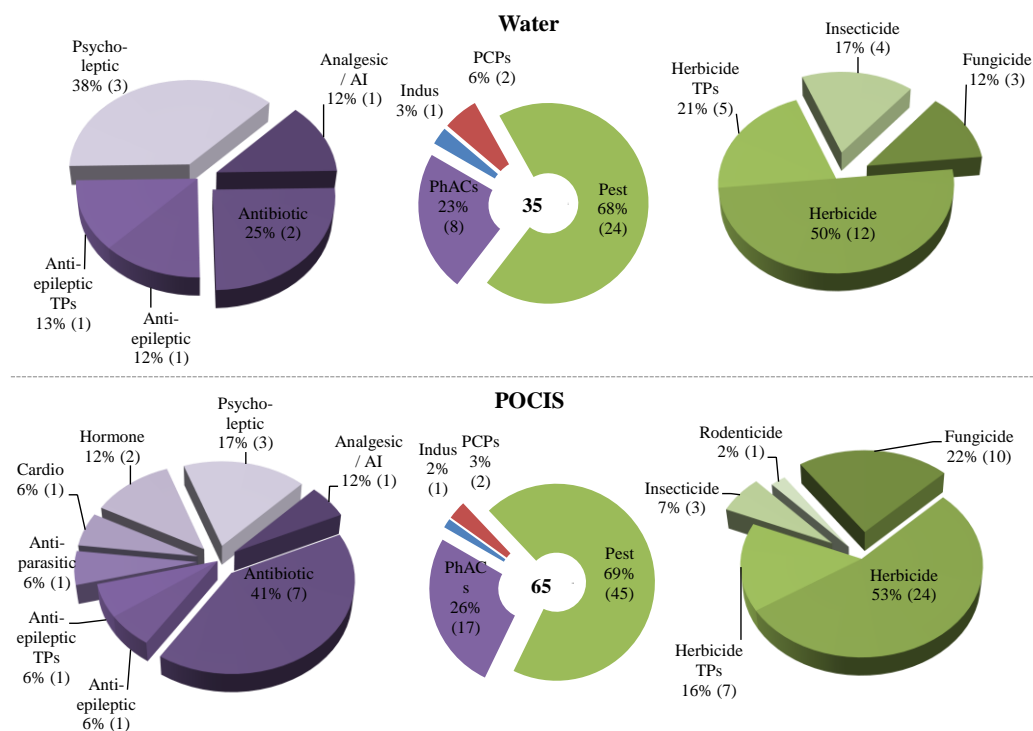


Figure 3: Percentage of detection of target compounds in site 1 for different groups and classes of organic pollutants from the homemade target database in POCIS and water samples in positive ionization, where *Pest* are pesticides, *Indus* is industrial, *PhACs* are Pharmaceuticals compounds, *PCPs* are Personal Care Products, *Cardio* are cardiovascular agents, *TPs* are transformation products, and *AI* is anti-inflammatory. Numbers in brackets refer to the number of compounds in each group or class.

One advantage of POCIS is that it is highly sensitive (Alvarez et al., 2005), which is clearly a benefit for screening by increasing the compound concentration in the extract. More compounds were detected with this tool (Figure 3). This is a higher confidence identification level of compounds because the detection of fragments obtained in MS^E acquisition mode was better (Figure 4). In the case of metolachlor morpholinone chromatographic signals were higher in POCIS sample than water. More fragments were detected in POCIS extract than water and the intensity of ions (monoisotopic and fragments) were higher (Figure 4).

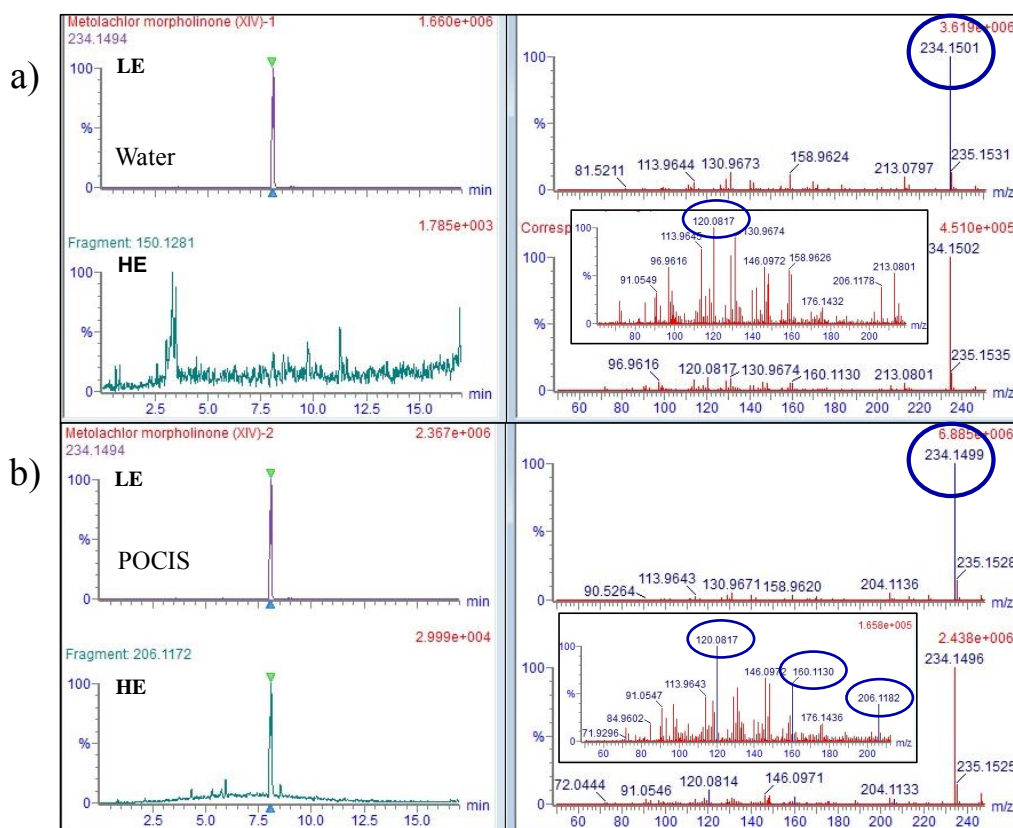


Figure 4 : Comparison of chromatogram and mass spectrum of metolachlor morpholinone detected in water and POCIS samples. a) chromatograms and spectrums of water sample, b) chromatograms and spectrums of POCIS sample. *LE* is Low Energy (Function 1) and *HE* is High Energy (Function 2) in MS^E acquisition mode.

3.2 Influence of source contamination on compound distribution

3.2.1 Target screening

To highlight compounds specific to each source of contamination, all target compounds identified in both sites were compared with the target database. Both sites have agricultural sources of contamination whereas only site 1 is impacted by urban effluents. Sixty-four compounds were identified as target compounds in site 1 and 72 in site 2, of which 38 are identified in both (Figure 5Figure 5).

Sixty-eight percent of the shared target compounds are pesticides (26 compounds), 42% being herbicides and TP with atrazine and its TPs (atrazine-desethyl and atrazine-desisopropyl), and terbutometon and its TP (desethyl-terbutometon), and 21% being fungicides with carbendazim and cyproconazole. PhACs represent 24 % of the total, with 9 compounds including tramadol, which is an analgesic/anti-inflammatory drug and oxazepam which is a psycholeptic drug. Six percent were PCPs and their TPs, which included caffeine and 1,7-dimethylxanthine. One industrial compound was detected, tolyltriazone (Figure 5Figure 5).

1 The presence of pesticides and their TPs on both sites was expected and in agreement with an agricultural
2 source. Some of the detected pesticides are banned in France (i.e. atrazine, simazine and their TPs).
3 However, these compounds are detected most frequently (Lopez et al., 2015; Postigo and Barcelo, 2015;
4 Van Stempvoort et al., 2013). Caffeine and its TP (1,7-dimethylxanthine) were detected in almost all POCIS
5 samples (n=18) in both sites. They are generally considered to be tracers of anthropogenic activity (Lopez et
6 al., 2015). Tolyltriazole, a corrosion inhibitor for copper and its alloys, is frequently detected in groundwater
7 (Lopez et al., 2015; Postigo and Barcelo, 2015). The presence of PhACs in groundwater usually implies
8 wastewater input (Van Stempvoort et al., 2013). However, some analgesic/anti-inflammatory drugs and
9 antibiotics, such as tramadol, flumequine, oxazepam, and sulfamethoxazole, might also be used as veterinary
10 drugs in agriculture (Lopez et al., 2015). The occurrence of carbamazepine, an antiepileptic drug and
11 wastewater tracer, is unexplained in site 2. Nevertheless, the detection frequency of carbamazepine is clearly
12 different in the two sites (17 out of 18 samples in site 1 vs. 4 out of 18 in site 2), which reflects the
13 difference in urban pressure in the two sites.

14 Target compounds specific to each site are identified in [Figure 5](#). Twenty-six were identified only in
15 site 1 – 18 pesticides and their TPs (69 %) and 8 PhACs (31 %). Among the pesticides, 4 herbicides
16 (tebutam, benfluraline, sebuthylazine and terbuthylazine) and 1 insecticide (carbosulfan) were detected in
17 more than half of the 18 samples. Only two herbicide TPs were detected in fewer than three samples.
18 Concerning PhACs, marbofloxacin and norgestrel were detected in more than 9 samples. Carbamazepine-
19 10,11-epoxide, an active carbamazepine TP, was identified in 16 samples. This compound might be present
20 in wastewater and sorbed on soil and its mobility is greater than that of its parent compound (Fenet et al.,
21 2012).

22 Thirty-four target compounds were identified in site 2 ([Figure 5](#)). These included 23 pesticides and
23 their TPs (67 %), 10 PhACs (30 %) and 1 PCP (3 %). Compared to what was found in site 1, more
24 pesticides and TPs were identified in more than half of the samples in site 2 – 3 fungicides (azoxystrobine,
25 difeconazole and metalaxyl), 2 herbicides (metsulfuron-methyl and chlorotoluron), 4 metolachlor TPs
26 (deschlorometolachlor, 2-hydroxymetolachlor, deschloroacetylmetolachlor and metolachlor morpholinone),
27 and 2 acetochlor or metolachlor TPs (2'-ethyl-6'methylacetanilide and 2-hydroxy-2'-ethyl-6'-
28 methylacetanilide). These results agree with those of Amalric and co-workers (Amalric et al., 2013), even if
29 the use of POCIS makes it possible to identify more TPs. Some of these compounds could be used as tracers
30 of agricultural activities, especially in cropped areas. Other targeted compounds (PhACs) were identified
31 less frequently than pesticides and were detected in less than 3 samples. This might indicate a slighter
32 impact of wastewater in site 2.

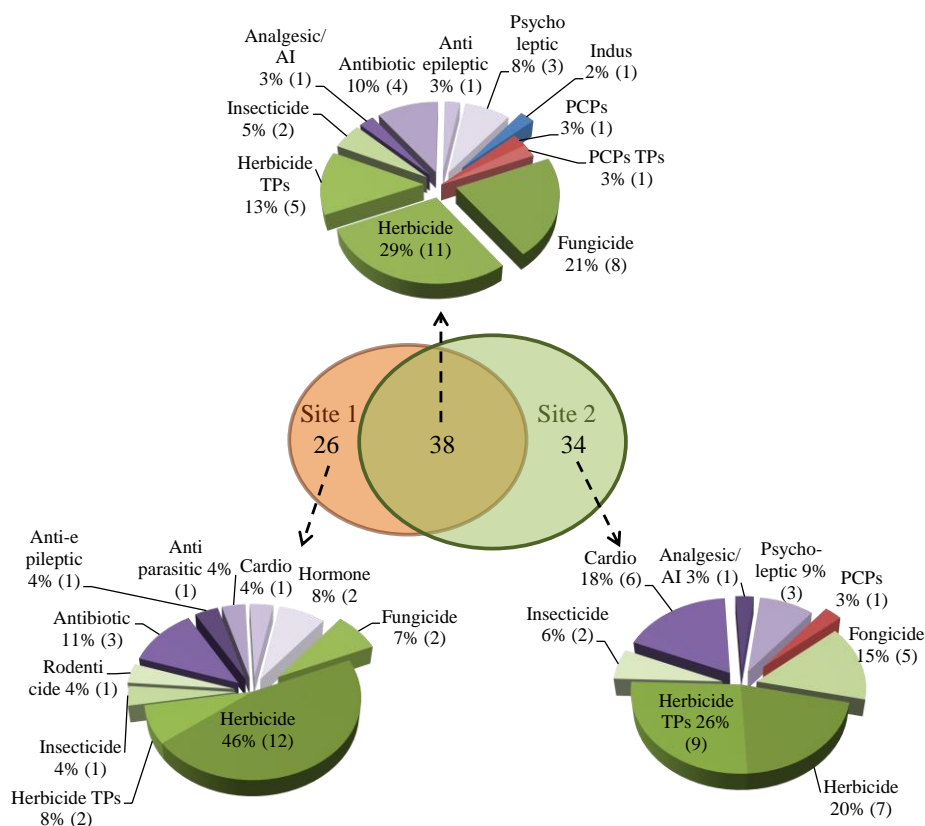


Figure 5: Comparison of the percentage of detection of target compounds for different classes of organic pollutants in POCIS samples in sites 1 and 2 in positive ionization where *Indus* is industrial, *PCPs* are Personal Care Products, *Cardio* are cardiovascular agents, *TPs* are transformation products, and *AI* is anti-inflammatory. Numbers in brackets refer to the number of compounds in each class.

3.2.2 Suspect screening

Suspect compounds were identified using data in our suspect database. The level of identification confidence of compounds identified as suspect is lower than that of target compounds because their presence is not confirmed by the injection of a reference standard. Twenty-seven of the 280 compounds in the suspect database were identified in site 1 and 32 were identified in site 2 (Table 1). Most of the compounds identified as suspect are PhACs (more than 70 %). Eighteen suspect compounds were detected in both sites and 11 of these in more than half of the 18 samples – 4 or 5-methyl-1H-benzotriazole being one of the industrial compounds, atrazine, pirimicarb and 2-aminobenzimidazole (TP of carbendazim) three of the pesticides, guaifenesin and desmethyl-dextrophan (TP of dextromethorphan) two of the respiratory agents, tramadol and ketorolac two of the analgesic/anti-inflammatory agents, des-venlafaxine and didesmethyl-venlafaxine (TPs of venlafaxine) two of the psycholeptics, and primidone one of the antiepileptics. The detection of pesticides was expected in these sites, as was that of 2-aminobenzimidazole, in agreement with the presence of the target compound carbendazim. Methylbenzotriazole was detected in both site 1 (n=16) and site 2 (n=6). This is in agreement with this type of contamination source. Concerning the PhACs, some

1 compounds are also used in veterinary medicine in France. These include guaifenesin (equine),
 2 dextromethorphan (canine), tramadol, ketorolac (equine) and primidone (feline and canine). However, their
 3 veterinary use cannot alone explain their presence in site 2, which is contaminated only by agricultural
 4 sources. This might suggest a slight input of wastewater, which is consistent with the conclusion on the
 5 presence of carbamazepine in site 2.

6 **Table 1: Positive identification of suspect compounds for various groups of organic pollutants in POCIS in sites 1 and 2 using suspect**
 7 **database with number of compounds and proportion of each class, where TPs are transformation products**

Groups of compounds	POCIS Site 1		POCIS Site 2	
	Number of compounds	Proportion (%)	Number of compounds	Proportion (%)
Industrial compounds	1	4	1	3
Pesticides	3	11	6	19
Pharmaceuticals	21	78	23	72
Personal care products	2	7	2	6
Total	27		32	
Details				
Pesticides				
<i>Fungicides</i>	<i>Precursor</i>		1	17
	<i>TPs</i>	1	33	1
<i>Herbicides</i>	<i>Precursor</i>	1	33	1
	<i>TPs</i>			2
<i>Insecticides</i>	<i>Precursor</i>	1	33	1
Pharmaceuticals				
<i>Cardiovascular agents</i>	<i>Precursor</i>	2	10	2
	<i>TPs</i>	1	5	2
<i>Respiratory agents</i>	<i>Precursor</i>	2	10	2
	<i>TPs</i>	1	5	1
<i>Analgesic/Anti-inflammatory agents</i>	<i>Precursor</i>	2	10	3
<i>Antibiotics</i>	<i>Precursor</i>	2	10	3
<i>Antiepileptics</i>	<i>Precursor</i>	4	19	2
	<i>TPs</i>	1	5	1
<i>Psycholeptics</i>	<i>Precursor</i>	4	19	3
	<i>TPs</i>	1	5	4
<i>Other</i>	<i>Precursor</i>	1	5	
Personal care products				
	<i>Precursor</i>	1	50	1
	<i>TPs</i>	1	50	1

9 Nine suspect compounds were identified as specific to site 1, including four PhACs detected in more than
 10 half of the samples – carbamazepine and lamotrigine (antiepileptics), irbesartan (cardiovascular agents) and
 11 diazepam (psycholeptics). These compounds have been detected elsewhere in France in surface water
 12 downstream from effluent discharge points (Ferrer and Thurman, 2012) and irbesartan has been detected in
 13 groundwater in Switzerland (Huntscha et al., 2012).

14 Fourteen suspect compounds were specific to site 2, including two herbicides – simazine-2-hydroxy (a TP of
 15 simazine) and terbuthylazine-desethyl-2-hydroxy (a TP of terbuthylazine), and one cardiovascular agent –
 16 dehydrofedipine (a TP of nifedipine), which were detected in more than in 9 samples. Terbuthylazine-

1 desethyl-2-hydroxy and simazine-2-hydroxy have the same exact mass which correspond to $C_7H_{13}N_5O$.
2 Their differentiation has been possible because they have not the same fragments. Terbutylazine-desethyl-
3 2-hydroxy has two fragments: 128.0566 and 86.0348 (Huntscha et al., 2012). And simazine-2-hydroxy have
4 four fragments: 184.1207, 114.0659, 97.0389 and 69.0094 (Diaz et al., 2011). The presence of two herbicide
5 TPs confirms the principal agricultural source of contamination for site 2. Terbutylazine-desethyl-2-
6 hydroxy has been detected in groundwater elsewhere (Huntscha et al., 2012). Nifedipine is also used in
7 veterinary medicine (to decrease cholesterol accumulation). As stated above, this compound might come
8 from either wastewater or livestock.

9 Using the suspect database enabled us to increase the number of identified compounds by making use of
10 literature data and databases on line while limiting the cost of purchasing and analyzing reference standards.
11 However, retention times and complete mass spectra, needed to confirm the presence of a compound, are not
12 included in on-line databases and can be determined only by injecting standards into the same apparatus as
13 the samples.

14 3.2.3 Non-target screening

15 For the non-target analysis, MarkerLynx XS software filters the markers (characterized by retention time,
16 exact mass and intensity) that are identified in at least two samples of a sample set (containing 18 POCIS for
17 each site). In these 36 samples, about 12,000 markers were detected for the sample sets for both sites. Many
18 of these, such as natural or widespread compounds, are not discriminants. Among them are the compounds
19 identified with both of the approaches described above (target and suspect).

20 PCA enabled us to highlight specific markers for each site. 41 markers were specific to site 1 and 36
21 markers to site 2 after manually checking that each marker was detected in two samples in a triplicate. For
22 each marker, the retention time, accurate mass and the trend view were provided (Figure 6Figure-5). It is
23 also possible to access the elemental composition of each marker based on accurate mass (Figure 6Figure-5).
24 At most, twenty results of elemental compositions could be calculated, and these were ranked by mass error.
25 The best choices must be made as a function of mass error, isotopic pattern, fragment ions, analyst
26 knowledge and online database data.

27 The trend view is a plot of the relative normalized intensities of a selected marker throughout the triplicates
28 of POCIS, sampling period and sampled sites. The first 18 samples correspond to 18 samples from site 1 and
29 the others to samples from site 2. Markers specific to site 1 were present only in the first 18 samples as
30 shown in Figure 6Figure-6a for the marker detected at 4.94 min with m/z 250.1738, whereas markers
31 specific to site 2 were present only in the last 18 samples (Figure 6Figure-6b). This information might be
32 used later to identify relevant markers.

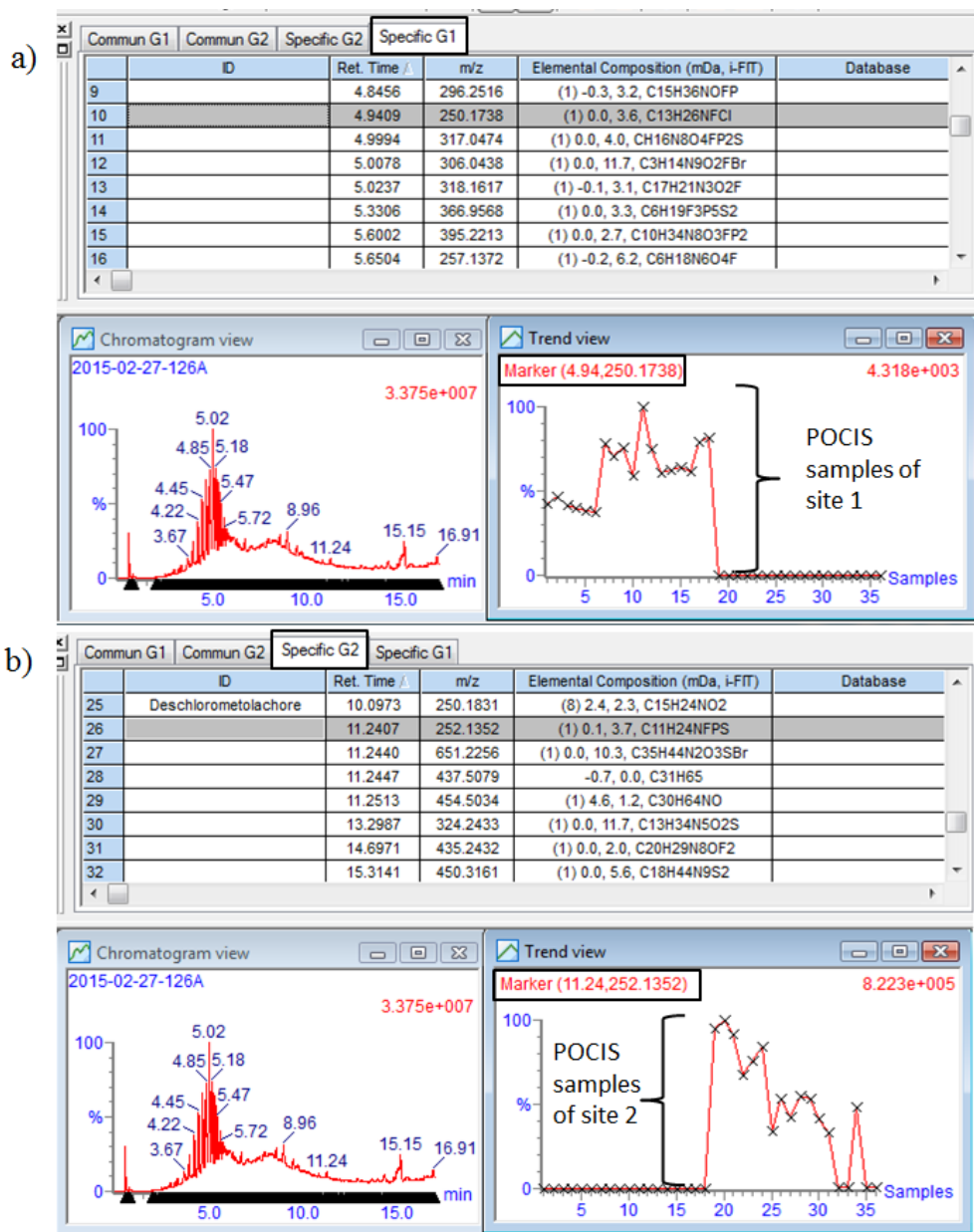


Figure 6: Results for non-target screening from MarkerLynx XS software. a) Example of results for a marker specific to site 1 with trend view of marker at 4.94 min and with a m/z 250.1738. b) Example of results for a marker specific to site 2 with trend view of marker at 11.24 min and with a m/z 252.1352. The trend view is a plot of the relative normalized intensities of the selected marker (y-axis) throughout samples (x-axis).

At present, each site can be characterized by the molecular fingerprints obtained here. Thereafter, it will be possible to compare the molecular fingerprints of these sites whose sources of pollution are known and enable us to clearly differentiate the two sites in order to improve the relevance of the pollution fingerprint. This data processing could be used as a warning system in sensitive areas (water supply, aquaculture, etc.)

1 more appropriate than predefined monitoring approaches that require a prior knowledge of the contaminants
2 that must be monitored.

3 **4 Conclusions**

4 This study demonstrates the advantage of using POCIS for organic chemical screening. More organic
5 compounds were detected and identified with this tool than by analyzing grab samples due to POCIS's
6 accumulation capability. HRMS makes it possible to identify, in only one injection, targeted compounds
7 and/or suggest non-targeted compounds using a database compiled with literature and on-line data. The
8 combination of both these tools can significantly improve environmental monitoring programs.

9 The data processing described here enabled us to identify organic compounds in groundwater by target and
10 suspect screening. Their presence is in agreement with the previously-known types of pollution sources for
11 each site (agricultural and urban effluents for site 1 and an agricultural source for site 2), with the exception
12 of some PhACs in site 2 that seem to indicate an impact of effluents from wastewater treatment plants.

13 This methodology revealed the presence of transformation products that had never been identified before in
14 the sites. Their presence might be problematic with regard to current legislation on drinking water, which
15 stipulates that the total concentration of all pesticides and their TPs must be lower than 0.4 µg/L.

16 The use of statistics for non-target screening facilitates the process by highlighting relevant markers to
17 identify. A molecular fingerprint was made for both sites and should be continuously improved by
18 identifying the unknown compounds. Various methods for accomplishing this are currently under
19 investigation. These include i) working on the implementation of target and suspect databases, ii) ensure
20 developing a specific suspect database, and iii) comparing the pollution footprint as a function of the site
21 and/or the pollution source. A complementary approach using temporal variation analysis will be applied on
22 the sample sets to highlight differences among sampling periods, concerning for example pesticides with
23 different application periods. This work may potentially bring supplementary information.

24 **Acknowledgements**

25 This study was funded by BRGM. Authors would like to thank A.K. Bourg for its edits and reviews of this
26 document

27 **Bibliography**

28 Alvarez DA, Huckins JN, Petty JD, Jones-Lepp T, Stuer-Lauridsen F, Getting DT, et al. Tool for monitoring
29 hydrophilic contaminants in water: polar organic chemical integrative sampler (POCIS). In: R.
30 Greenwood GMaBV, editor. *Passive Sampling Techniques in Environmental Monitoring*. Volume
31 48. Elsevier, 2007, pp. 171-197.

- 1 Alvarez DA, Petty JD, Huckins JN, Jones-Lepp TL, Getting DT, Goddard JP, et al. Development of a
2 passive, in situ, integrative sampler for hydrophilic organic contaminants in aquatic environments.
3 *Environmental Toxicology and Chemistry* 2004; 23: 1640-1648.
- 4 Alvarez DA, Stackelberg PE, Petty JD, Huckins JN, Furlong ET, Zaugg SD, et al. Comparison of a novel
5 passive sampler to standard water-column sampling for organic contaminants associated with
6 wastewater effluents entering a New Jersey stream. *Chemosphere* 2005; 61: 610-622.
- 7 Amalric L, Baran N, Coureau C, Maingot L, Buron F, Routier S. Analytical developments for 47 pesticides:
8 first identification of neutral chloroacetanilide derivatives in French groundwater. *International*
9 *Journal of Environmental Analytical Chemistry* 2013; 93: 1660-1675.
- 10 Arditoglou A, Voutsas D. Passive sampling of selected endocrine disrupting compounds using polar organic
11 chemical integrative samplers. *Environmental Pollution* 2008; 156: 316-324.
- 12 Bartelt-Hunt SL, Snow DD, Damon T, Shockley J, Hoagland K. The occurrence of illicit and therapeutic
13 pharmaceuticals in wastewater effluent and surface waters in Nebraska. *Environmental Pollution*
14 2009; 157: 786-791.
- 15 Berho C, Togola A, Coureau C, Ghestem J-P, Amalric L. Applicability of polar organic compound
16 integrative samplers for monitoring pesticides in groundwater. *Environmental Science and Pollution*
17 *Research* 2013; 20: 5220-5228.
- 18 Bletsou AA, Jeon J, Hollender J, Archontaki E, Thomaidis NS. Targeted and non-targeted liquid
19 chromatography-mass spectrometric workflows for identification of transformation products of
20 emerging pollutants in the aquatic environment. *Trac-Trends in Analytical Chemistry* 2015; 66: 32-
21 44.
- 22 Boix C, Ibanez M, Zamora T, Sancho JV, Niessen WMA, Hernandez F. Identification of new omeprazole
23 metabolites in wastewaters and surface waters. *Science of the Total Environment* 2014; 468: 706-
24 714.
- 25 Diaz R, Ibanez M, Sancho JV, Hernandez F. Building an empirical mass spectra library for screening of
26 organic pollutants by ultra-high-pressure liquid chromatography/hybrid quadrupole time-of-flight
27 mass spectrometry. *Rapid Communications in Mass Spectrometry* 2011; 25: 355-369.
- 28 Directive 2000/60/EC establishing a framework for Community action in the field of water policy.
29 22/12/2000. Official Journal L 327. pages 1-73
- 30 Directive 2006/118/EC of the European Parliament and of the Council on the protection of groundwater
31 against pollution and deterioration.
- 32
- 33 Directive 2014/80/EU amending Annex II to Directive 2006/118/EC of the European Parliament and of the
34 Council on the protection of groundwater against pollution and deterioration. 20/06/2014. Official
35 Journal L 182/52. Pages 0052.
- 36
- 37 Durand S, Legeret B, Martin A-S, Sancelme M, Delort A-M, Besse-Hoggan P, et al. Biotransformation of
38 the triketone herbicide mesotrione by a *Bacillus* strain. Metabolite profiling using liquid
39 chromatography/electrospray ionization quadrupole time-of-flight mass spectrometry. *Rapid*
40 *Communications in Mass Spectrometry* 2006; 20: 2603-2613.
- 41 Escher BI, Fenner K. Recent Advances in Environmental Risk Assessment of Transformation Products.
42 *Environmental Science & Technology* 2011; 45: 3835-3847.
- 43 Fenet H, Mathieu O, Mahjoub O, Li Z, Hillaire-Buys D, Casellas C, et al. Carbamazepine, carbamazepine
44 epoxide and dihydroxycarbamazepine sorption to soil and occurrence in a wastewater reuse site in
45 Tunisia. *Chemosphere* 2012; 88: 49-54.
- 46 Ferrer I, Thurman EM. Analysis of 100 pharmaceuticals and their degradates in water samples by liquid
47 chromatography/quadrupole time-of-flight mass spectrometry. *Journal of Chromatography A* 2012;
48 1259: 148-157.
- 49 Focazio MJ, Kolpin DW, Barnes KK, Furlong ET, Meyer MT, Zaugg SD, et al. A national reconnaissance
50 for pharmaceuticals and other organic wastewater contaminants in the United States - II) Untreated
51 drinking water sources. *Science of the Total Environment* 2008; 402: 201-216.

- 1 Guibal R, Lissalde S, Charriau A, Poulier G, Mazzella N, Guibaud G. Coupling passive sampling and time
2 of flight mass spectrometry for a better estimation of polar pesticide freshwater contamination:
3 Simultaneous target quantification and screening analysis. *Journal of Chromatography A* 2015; 1387:
4 75-85.
- 5 Harman C, Thomas KV, Tollefsen KE, Meier S, Boyum O, Grung M. Monitoring the freely dissolved
6 concentrations of polycyclic aromatic hydrocarbons (PAH) and alkylphenols (AP) around a
7 Norwegian oil platform by holistic passive sampling. *Marine Pollution Bulletin* 2009; 58: 1671-
8 1679.
- 9 Harman C, Tollefsen KE, Boyum O, Thomas K, Grung M. Uptake rates of alkylphenols, PAHs and
10 carbazoles in semipermeable membrane devices (SPMDs) and polar organic chemical integrative
11 samplers (POCIS). *Chemosphere* 2008; 72: 1510-1516.
- 12 Hernandez F, Bijlsma L, Sancho JV, Diaz R, Ibanez M. Rapid wide-scope screening of drugs of abuse,
13 prescription drugs with potential for abuse and their metabolites in influent and effluent urban
14 wastewater by ultrahigh pressure liquid chromatography-quadrupole-time-of-flight-mass
15 spectrometry. *Analytica Chimica Acta* 2011; 684: 96-106.
- 16 Hernandez F, Ibanez M, Botero-Coy A-M, Bade R, Bustos-Lopez MC, Rincon J, et al. LC-QTOF MS
17 screening of more than 1,000 licit and illicit drugs and their metabolites in wastewater and surface
18 waters from the area of Bogota, Colombia. *Analytical and bioanalytical chemistry* 2015; 407: 6405-
19 16.
- 20 Hernandez F, Sancho JV, Ibanez M, Abad E, Portoles T, Mattioli L. Current use of high-resolution mass
21 spectrometry in the environmental sciences. *Analytical and Bioanalytical Chemistry* 2012; 403:
22 1251-1264.
- 23 Hug C, Ulrich N, Schulze T, Brack W, Krauss M. Identification of novel micropollutants in wastewater by a
24 combination of suspect and nontarget screening. *Environmental Pollution* 2014; 184: 25-32.
- 25 Huntscha S, Singer HP, McArdell CS, Frank CE, Hollender J. Multiresidue analysis of 88 polar organic
26 micropollutants in ground, surface and wastewater using online mixed-bed multilayer solid-phase
27 extraction coupled to high performance liquid chromatography-tandem mass spectrometry. *Journal*
28 *of Chromatography A* 2012; 1268: 74-83.
- 29 Ibanez M, Sancho JV, Pozo OJ, Hernandez F. Use of liquid chromatography quadrupole time-of-flight mass
30 spectrometry in the elucidation of transformation products and metabolites of pesticides. Diazinon as
31 a case study. *Analytical and Bioanalytical Chemistry* 2006; 384: 448-457.
- 32 Ibanez M, Sancho JV, Pozo OJ, Niessen W, Hernandez F. Use of quadrupole time-of-flight mass
33 spectrometry in the elucidation of unknown compounds present in environmental water. *Rapid*
34 *Communications in Mass Spectrometry* 2005; 19: 169-178.
- 35 Ibrahim I, Togola A, Gonzalez C. In-situ calibration of POCIS for the sampling of polar pesticides and
36 metabolites in surface water. *Talanta* 2013a; 116: 495-500.
- 37 Ibrahim I, Togola A, Gonzalez C. Polar organic chemical integrative sampler (POCIS) uptake rates for 17
38 polar pesticides and degradation products: laboratory calibration. *Environmental Science and*
39 *Pollution Research* 2013b; 20: 3679-3687.
- 40 Jelic A, Michael I, Achilleos A, Hapeshi E, Lambropoulou D, Perez S, et al. Transformation products and
41 reaction pathways of carbamazepine during photocatalytic and sonophotocatalytic treatment. *Journal*
42 *of Hazardous Materials* 2013; 263: 177-186.
- 43 Kovarova J, Marsalek P, Blahova J, Jurcikova J, Kasikova B, Svobodova Z. Occurrence of Perfluoroalkyl
44 Substances in Fish and Water from the Svitava and Svratka Rivers, Czech Republic. *Bulletin of*
45 *Environmental Contamination and Toxicology* 2012; 88: 456-460.
- 46 Leendert V, Van Langenhove H, Demeestere K. Trends in liquid chromatography coupled to high-resolution
47 mass spectrometry for multi-residue analysis of organic micropollutants in aquatic environments.
48 *Trac-Trends in Analytical Chemistry* 2015; 67: 192-208.
- 49 Li H, Vermeirssen EL, Helm PA, Metcalfe CD. Controlled field evaluation of water flow rate effects on
50 sampling polar organic compounds using polar organic chemical integrative samplers.
51 *Environmental Toxicology and Chemistry* 2010; 29: 2461-2469.
- 52 Lopez B, Ollivier P, Togola A, Baran N, Ghestem J-P. Screening of French groundwater for regulated and
53 emerging contaminants. *Science of the Total Environment* 2015; 518: 562-573.

- 1 Martínez Bueno MJ, Hernando MD, Agüera A, Fernández-Alba AR. Application of passive sampling
2 devices for screening of micro-pollutants in marine aquaculture using LC-MS/MS. *Talanta* 2009; 77:
3 1518-1527.
- 4 Martínez Bueno MJ, Ulaszewska MM, Gomez MJ, Hernando MD, Fernandez-Alba AR. Simultaneous
5 measurement in mass and mass/mass mode for accurate qualitative and quantitative screening
6 analysis of pharmaceuticals in river water. *Journal of Chromatography A* 2012; 1256: 80-88.
- 7 Mazzella N, Dubernet J-F, Delmas F. Determination of kinetic and equilibrium regimes in the operation of
8 polar organic chemical integrative samplers - Application to the passive sampling of the polar
9 herbicides in aquatic environments. *Journal of Chromatography A* 2007; 1154: 42-51.
- 10 Metcalfe CD, Beddows PA, Gold Bouchot G, Metcalfe TL, Li H, Van Lavieren H. Contaminants in the
11 coastal karst aquifer system along the Caribbean coast of the Yucatan Peninsula, Mexico.
12 *Environmental Pollution* 2011; 159: 991-997.
- 13 Mueller A, Schulz W, Ruck WKL, Weber WH. A new approach to data evaluation in the non-target
14 screening of organic trace substances in water analysis. *Chemosphere* 2011; 85: 1211-1219.
- 15 Postigo C, Barcelo D. Synthetic organic compounds and their transformation products in groundwater:
16 Occurrence, fate and mitigation. *Science of the Total Environment* 2015; 503: 32-47.
- 17 Regulation (EC) No 1907/2006 of 18 December 2006 concerning the Registration, Evaluation,
18 Authorisation and Restriction of Chemicals (REACH) and establishing a European Chemicals
19 Agency.
- 20
- 21 Schymanski EL, Jeon J, Gulde R, Fenner K, Ruff M, Singer HP, et al. Identifying Small Molecules via High
22 Resolution Mass Spectrometry: Communicating Confidence. *Environmental Science & Technology*
23 2014; 48: 2097-2098.
- 24 Tapie N, Devier MH, Soulier C, Creusot N, Le Menach K, Ait-Aissa S, et al. Passive samplers for chemical
25 substance monitoring and associated toxicity assessment in water. *Water Science and Technology*
26 2011; 63: 2418-2426.
- 27 Togola A, Budzinski H. Development of polar organic integrative samplers for analysis of pharmaceuticals
28 in aquatic systems. *Analytical Chemistry* 2007; 79: 6734-6741.
- 29 Van Stempvoort DR, Roy JW, Grabuski J, Brown SJ, Bickerton G, Sverko E. An artificial sweetener and
30 pharmaceutical compounds as co-tracers of urban wastewater in groundwater. *Science of the Total*
31 *Environment* 2013; 461: 348-359.
- 32 Vermeirssen ELM, Dietschweiler C, Escher BI, Van Der Voet J, Hollender J. Transfer kinetics of polar
33 organic compounds over polyethersulfone membranes in the passive samplers pocis and
34 chemcatcher. *Environmental Science and Technology* 2012; 46: 6759-6766.
- 35 Vrana B, Mills GA, Allan IJ, Dominiak E, Svensson K, Knutsson J, et al. Passive sampling techniques for
36 monitoring pollutants in water. *Trac-Trends in Analytical Chemistry* 2005; 24: 845-868.

Mis en forme : Français (France)