



HAL
open science

Feasibility and Interest in Earthquake Early Warning Systems for Areas of Moderate Seismicity: Case Study for the Pyrenees

Samuel Auclair, Xavier Goula, Jose Antonio Jara, Yolanda Colom

► **To cite this version:**

Samuel Auclair, Xavier Goula, Jose Antonio Jara, Yolanda Colom. Feasibility and Interest in Earthquake Early Warning Systems for Areas of Moderate Seismicity: Case Study for the Pyrenees. *Pure and Applied Geophysics*, 2015, 172 (9), pp.10.1007/s00024-014-0957-x. 10.1007/s00024-014-0957-x . hal-01087439

HAL Id: hal-01087439

<https://brgm.hal.science/hal-01087439v1>

Submitted on 1 Dec 2014

HAL is a multi-disciplinary open access archive for the deposit and dissemination of scientific research documents, whether they are published or not. The documents may come from teaching and research institutions in France or abroad, or from public or private research centers.

L'archive ouverte pluridisciplinaire **HAL**, est destinée au dépôt et à la diffusion de documents scientifiques de niveau recherche, publiés ou non, émanant des établissements d'enseignement et de recherche français ou étrangers, des laboratoires publics ou privés.

Feasibility and interest of earthquake early warning systems for areas of moderate seismicity: case study for the Pyrenees

Abbreviated title: Early warning for areas of moderate seismicity

Keywords: earthquake early warning; real-time seismology; moderate seismicity; seismic risk; magnitude assessment

Samuel AUCLAIR (1)*, Xavier GOULA (2), Jose-Antonio JARA (2), Yolanda COLOM (2)

¹ BRGM, Orléans (France), ² Institut Cartogràfic i Geològic de Catalunya (ICGC), Barcelona (Spain)

* Corresponding author: s.auclair@brgm.fr / fax. (+33)238.644.738

1. SUMMARY

Seismic risk in areas of moderate seismicity (AMS) is a reality and destructive earthquakes may occur there. This is why stakeholders and risk managers in these areas show an increasing interest in Earthquake Early Warning Systems (EEWS) and are wondering about the possibility to equip their territories. This question of feasibility has to be broached globally: distinguishing technical feasibility from notions of opportunity and utility, and thus has to involve both scientific experts and stakeholders. Moreover it is necessary to consider each situation specifically without any preconceptions, specifically concerning potential uses that can be made of early warnings: in particular, it is clear that when applied to AMS, the EEWS principles would translate into shorter lead-times than the ones expected for more seismic areas and would consequently require considering new ways of using early warnings. Through the experience conducted for the Pyrenees (France-Spain border) as part of the SISPy project, this study aims at identifying responses to the potential value of EEWS as real-time seismic-risk mitigation tools for AMS as well as to offer a methodological framework to guide stake-holders in their assessment of opportunities to set up EEWS.

2. INTRODUCTION

As real-time seismology progresses, the principle of earthquake early warning becomes conceivable for AMS where destructive earthquakes may occur and that are continuously becoming more vulnerable to seismic risk as populations and critical infrastructures are concentrating there. Like in Switzerland (Behr *et al.*, 2013) and Spain (Carranza *et al.*, 2013; Romeu *et al.*, 2014), scientists are frequently called to study the feasibility of establishing these areas with EEWS based on existing seismological networks. This firstly requires

investigating the technical feasibility of such systems in areas where recurrence intervals associated with destructive earthquakes are long, and then to assess their related theoretical performances. On the basis of these elements it is important to identify the potential end-users of EEWS in order to initiate a dialog and to broach with them the use that they could make of early warnings.

One of the main scientific issues about seismic early warning deals with the ability to quickly assess the destructive potential of imminent seismic shaking. When considering regional EEWS, this problem amounts to quickly assessing the magnitude of earthquakes from the first seconds of the waveforms. While many authors have demonstrated the ability to rapidly assess magnitudes greater than 4 and up to 6 or 7 thanks to the first seconds of the P waves and they have established either regional (e.g. Lancieri *et al.*, 2011) or global scaling relations (e.g. Zollo *et al.*, 2010), very few studies have considered lower magnitude events (e.g. Heidari *et al.*, 2013; Kuyuk and Allen, 2013b). However, while particular attention must be paid to largest earthquakes (probably of the order of 6.5 in Pyrenees), which are liable to produce the greatest damage, smaller earthquakes should also be considered when working in AMS so as to be certain to be able to distinguish them during the real-time analysis.

On the other hand, early-warning should not be considered as an end in itself and its utility has to be determined with regard to its effective use for risk mitigation. Indeed EEWS may be divided into two essential components, which are the scientific analysis and the diffusion/use of the early warning (Nigg, 1995). Therefore, even for an early and reliable alert, if it is not relayed in a satisfactory way or if its recipients do not take appropriate actions, an EEWS could be justifiably considered as ineffective. Nevertheless, end-user aspects are very often neglected during conception and setting up of EEWS, all the efforts being concentrated on technical questions concerning the emission of alerts. As an example, the Mexican "SAS" system, which is operating since 1991 and is able to provide alerts of nearly one minute in Mexico City, is often criticized for the absence of strategy in identification of end-users and their needs: this absence of strategy is judged as being the main limiting factor of the efficiency of the system (Suárez *et al.*, 2009). Therefore, it is indispensable not only to identify potential end-users of EEWS, but also to evaluate their perception of the system, their needs as well as their considered actions in response to early warnings. Even though it is disconnected from the more technical aspects, this reflection is necessary to guide the

conception of the system, from the choice of methods used for the data analysis to the way to use early warnings.

According to this principle and through the case study of the Pyrenees (see below), this study aims at identifying ways of responding to the potential value of EEWS as real-time seismic-risk mitigation tools for AMS, as well as to offer a methodological framework to guide stake-holders in their assessment of opportunities to set up EEWS. In the following section, we focused on “technical” feasibility aspects. The Pyrenean seismic network is first examined in order to assess its adaptability to early warning purposes. In particular, redundancy issues, network coverage, data processing and time latency of the existing real-time system are analyzed. Then, an assessment of the theoretical performance of the system is made, so as to estimate expected lead-times in the Pyrenees, thus providing a basis for reflections on how appropriate such a system may be in the area. In addition, performance criteria are proposed in order to facilitate this work for other AMS. Therefore, in the subsequent section, different rapid magnitude determination approaches are tested in order to check their adaptability to the Pyrenean context and to establish empirical relationships useful for this region. To that end, a waveform catalogue was constituted, gathering more than 2 400 records from 193 Pyrenean seismic events. Based on a survey of potential end-users from this region that aimed to identify their wishes in terms of early warning, the last section is dedicated to question of the usefulness of EEWS for the Pyrenees. The article ends with a discussion and some brief conclusions about applicability of seismic early warning for AMS in general.

3. GENERAL OVERVIEW OF THE CASE STUDY OF PYRENEES

The Pyrenees are a 400-km-long mountain range located in southwest Europe along the French–Spanish border, and constitute one of the most earthquake-prone regions of mainland France and Spain, with more than 400 $M_L \geq 2.0$ events per year, of which about ten are locally felt. In spite of their relatively moderate seismic activity compared to other European countries such as Romania and Italy, the Pyrenees have historically experienced numerous destructive earthquakes, including events in 1428, 1660, 1750 and 1967 which reached intensity VIII (MSK scale : Medvedev *et al.*, 1964) or more (Figure 1 - see SISFRANCE database – www.sisfrance.net, last accessed June 30th 2014). The western part of the massif is characterized by a greater seismic activity concentrated along the North-Pyrenean Fault while the eastern part area shows a

more diffuse seismicity (Souriau *et al.*, 2005; Olivera *et al.*, 2006). The existence of many events having caused intensity higher than VII (MSK) underlines the necessity to give attention to this area in terms of seismic risk (Secanell *et al.*, 2008).

The Pyrenean region is monitored by several seismological networks on both sides of the French -Spanish border, counting in total around 120 seismic stations (broad-band and strong-motion sensors taken together). Thanks to a progressive decrease of constraints associated to real-time seismology (generalization of low-cost robust data-transfer technologies, continuous increasing of data storage capacities, etc.), a growing proportion of these stations are progressively called to evolve toward real-time data transmission. Moreover, a recent project called "SISPy" (www.sispyr.eu, last accessed June 30th 2014), involving (among others partners) the main owners of Pyrenean seismic stations, has notably allowed the establishment of a real-time pooling process of Pyrenean seismological data resulting in an improvement of the coverage of the massif.

A "rapid response system" (RRS) called "ISARD" (Goula *et al.*, 2008) covers the eastern part of the Pyrenees, and is currently used by civil protection authorities of the Spanish autonomous region of Catalonia for crisis management purposes. It allows automatic rapid calculation and dissemination of loss assessments (both material and human losses). Moreover, the ground-motion and shaking intensity calculation code ShakeMap (Wald *et al.*, 1999) has been recently implemented and adapted to the whole Pyrenean massif (Bertil *et al.*, 2012; www.sispyr.eu), and arouses the interest of the French and Spain civil protection authorities as a potential help for seismic crisis management. Therefore, it is quite natural that the question of the feasibility of using the current real-time monitoring network in the form of an EEWS has arisen. Of particular interest are the double issues of the technical feasibility and the potential use of such a tool within an AMS.

4. TECHNICAL FEASIBILITY OF AN EARLY WARNING SYSTEM

Adaptability and potential of the current real-time monitoring system for early-warning purposes

Effective network coverage for early warning

There is clear evidence that AMS such as the Pyrenees do not justify the setting-up and maintenance of seismological networks solely dedicated to earthquake early warning, and the notion of technical feasibility

is, therefore, strongly interlocked with the one of the enhancement of pre-existing instrumentation. Indeed, conditional on efficient and reliable real-time data-transmission and processing technologies, both modern strong-motion and broad-band sensors currently used by monitoring seismological networks could be employed for early-warning purposes. In order to assess the adaptability of a given existing seismic monitoring network to early-warning purposes, we first define two distinct categories of technical requirements that have to be considered when implementing an EEWS (Table 1): those requirements that are essential to an EEWS (“basic requirements”), and others (“recommended requirements”) that are not mandatory but that would significantly improve the reliability and efficiency of an EEWS and which may be critical for its operational use.

In the Pyrenees, most of the real-time stations fulfil the basic requirements listed in Table 1 because these stations are also used by regional/national seismological data-centers for “real-time” event detection and seismic alerts. In total, 52 stations fully accomplish the basic requirements and constitute that we call the current early-warning scenario called “EEWS1” (Table 4 in the appendix). Nevertheless, the recommended requirements are not entirely accomplished by all these stations. In particular, except for FNEB that consists of two sensors (one strong-motion plus one broad-band), there are no stations with spare data sensors or data acquisition, communication or power supply systems. To solve this problem, it is recommended to add redundancy to stations’ equipment, especially to communication systems because their vulnerability is higher than the others. This redundancy also can be reached by increasing station density to allow some fault tolerance thereby reducing the effect of changes in the station distribution.

A key consideration when measuring the efficiency of any EEWS is the notion of “latency”: in other words, “coverage” of the seismological network has to be no longer defined by the density of seismic stations in a given area, but rather by the one of the density of available seismic records in a given area at a given instant. Therefore, studying the EEWS1 situation from this viewpoint, we have typical values of latency time (defined as the delay between the seismic signal being recorded at any seismic station and the time when the digitized signal is received at the data-center located in Barcelona) for 22 of the 52 considered stations. Calculated over a time-length of 48h, most of these mean values are lower than 5 s, with an average latency time of 3.7 s. Then, the complete system latency time represented by the so-called “warning time” T_w (being

the time at which the system is able to produce an alert) will be for a specific hypocenter the result of adding P-waves travel times to the closest stations and the recording time lengths, stations latency times and data processing times.

Thus, under some hypotheses, this complete system latency may be regionally assessed in order to give an idea about the possible benefits of a virtual Pyrenean EEWS. Among these hypotheses, the most important one is the minimum number of stations required to perform the automatic real-time analysis (including detection, location, magnitude assessment and so forth). We decided to vary this parameter from one that corresponds to the “on-site” configuration up to four stations. In addition, a typical latency time of 3.7s (see previous paragraph) has been considered for those stations of Table 4 without any estimates for this parameter. This kind of analysis can lead to maps showing T_w as a function of the hypocentral location. As this time is not very useful in itself, we make it more explicit using the “blind zone” concept (see paragraph below).

Simulated performance analysis

When considering the application of EEWS, a very important issue is that of the “blind zone”, which designates the area where a warning arrives after the destructive seismic waves (S waves followed by surface waves). Thus, the blind zone represents the area in which an EEWS is inefficient: its extension depends on many factors, such as epicentral location and focal depth of the earthquake, topology of the seismological network, latency time of close-field stations and speed of the calculation process. In a very similar way to the one used by Kuyuk and Allen (2013a) considering regional average values of seismic-wave velocity [$V_p=6\text{km/s}$ and $V_s=V_p/1.75$, (Souriau and Pauchet, 1998)] and a constant focal depth of 10 km, it is then possible to convert T_w -maps described previously into maps showing the spatial variation of the parameter $R_{bz}^{n,t}$. This parameter represents - for an EEWS using the first t seconds of the P-wave from at least n triggered stations to perform its analysis - the average radius of blind-zone as a function of the hypocentral location. Considering firstly that an analysis time of 2s seems long enough for the real-time assessment of magnitude in the Pyrenees (see next section), and secondly a minimum of three triggered stations, Figure 2 shows the distribution of parameter $R_{bz}^{3,2}$ obtained for scenario EEWS1. This figure presents relatively short blind-zone radii of 30-40 km in areas with more stations, and at the same time

underlines their strong spatial inhomogeneity as a function of the effective coverage of seismic monitoring. Another thing that can be seen on Figure 2 is an increase of $R_{bz}^{n,t}$ (here $R_{bz}^{3,2}$) very close to stations: this apparent paradox results from the observation that below a certain hypocentral distance, real-time stations are useless for early warning using fixed P-waves time-length for the analysis because of an insufficient time difference between P and S waves' arrivals for magnitude assessment. However, this effect can be easily bypassed considering shorter P-waves time-length in the epicentral area so that local magnitude can be conventionally computed for those of the stations located very close to the epicenter.

$R_{bz}^{n,t}$ maps may be very useful when considering the benefit of developing such a system in AMS such as the Pyrenees. Coupling these regional maps with a look at the regional seismicity is also a very valuable way to broach the question of the potential contribution over time of EEWS to real-time seismic risk management.

To that end, we generated a synthetic earthquake catalog using the “unified seismogenic zonation” PSHA and corresponding activity parameters proposed for the Pyrenees by Secanell *et al.* (2008). The main steps taken to generate this synthetic earthquake catalog are as follows: 1) we first consider that earthquakes occurrence within a given seismotectonic zone follows a Poisson process and then we make use of the zonal annual activity rate λ to calculate the number of events for each zone, 2) secondly we assume a Gutenberg-Richter relation (Gutenberg & Richter 1954) for magnitude calculation using the b values, and 3) we finally assume that hypocenters occur randomly and uniformly within each zone. So as to be able to calculate robust statistics for large events, we considered an “observation” duration of 10 000 years for this catalog, resulting in 13 672 earthquakes with M_L greater than 4.0 (with 907 $5 \leq M_L \leq 6$ events, and 55 events larger than M_L 6) (Figure 2). This synthetic catalog has been created in order to easily identify trends about the usefulness of a potential Pyrenean EEWS. However, it is important to keep in mind that the results presented later in this article are strongly dependent on this catalog and might be slightly different if another catalog was used, for example using of a different seismotectonic zoning.

Considering earthquakes from the synthetic catalog (Figure 2) located inside the SISPyr project area as representative of the Pyrenean seismicity, we then calculate corresponding theoretical isoseismal curves by using the Pyrenean intensity prediction equation (IPE) of Bakun and Scotti (2006). These curves can be

compared with warning times in order to deduce lead times (time interval between the arrival of the warning and the arrival time of the S waves) associated to given intensity levels and noted $LT_1^{n,t}$ (Figure 3).

Figure 3.a clearly underlines that, unless considering a major earthquake characterized by a broad epicentral area like the one that occurred in the Pyrenees in 1428 ($M \sim 6.2$), performances of an EEWS based on the current SISPyre network should – in order to be fully efficient in the entire massif – be able to emit alerts based on an analysis of data from a very limited number of stations (one or two). However, representing mean lead times, Figure 3.a hides strong performance disparities depending on whether earthquakes occur in the area well covered by the EEWS1 network. Thus, regarding the EEWS configuration with at least three triggered stations, Figure 3.b. indicates that the range of lead times is relatively wide, with longer times in areas with a good coverage of the real-time EEWS1 network.

While it is unlikely that the setting up of an EEWS justifies, in itself, the addition of many new seismic stations in areas such as the Pyrenees, it is reasonable to assume that most of the seismic networks covering AMS are likely to improve with time. In this way, we consider for the Pyrenees the on-going process of modernization of existing stations toward real-time data transmission, as well as the installation of new stations. Thus, in addition to the current real-time stations constituting the EEWS1 network, Pyrenees could be equipped in the coming years with an additional 30 more real-time stations usable for earthquake early warning:

- 26 existing stations whose data-transmission in real-time is likely/possible in the medium-term ;
- 4 stations whose installation is planned in the French part of Pyrenees through RESIF's permanent observation network (the French seismological component of EPOS, the European Plate Observing System - www.epos-eu.org).

We then consider all these stations as constituting an improved early warning scenario denoted "EEWS2". Lastly, so as to assess the upper bounds of potentialities of EEWS for the Pyrenees, and even though such a configuration is unlikely in this region, we consider an "ideal" virtual network of 206 stations characterized by a triangular regular topology with mesh-size of 20 km as represented on Figure 2 and noted "EEWS3". On an inclusive basis, we assign to each station of network EEWS2 and EEWS3 a mean latency time of 2s, which

is consistent with performances of current seismological data real-time transfer technologies (Kuyuk *et al.*, 2014).

Similarly to scenario EEWS1, the theoretical performances of networks EEWS2 and EEWS3 have been calculated to assess the impact of the strengthening of real-time seismological monitoring of the Pyrenees in terms of seismic early warning. In order to easily compare results obtained from each of these EEWS configurations, Figure 4 represents the portion of synthetic earthquakes leading to positive lead-times for areas affected by different levels of macroseismic intensity (i.e. blind zones smaller than the considered isoseismal) as a function of magnitude, for EEWS using the first 2s of the P-waves on the records of the first three triggered stations. Evidently, it can be noticed that a densification of the EEWS seismic network improves performance. For an exposure to a given level of intensity, passing from configuration EEWS1 to EEWS2 or EEWS3 leads, in most cases, to a significant decrease in the minimum magnitude for which the first cases of positive lead times appear: thus, the minimum threshold of positive lead times corresponding to intensity VI goes from M_L 5.6 for configuration EEWS1 to M_L 5.2 for configurations EEWS2/EEWS3. Owing to the fact that network EEWS2 is locally as dense as EEWS3, this value of minimal magnitude changes only slightly between configurations EEWS2 and EEWS3. On the other hand, the distribution of EEWS3 stations being regular, performances associated to that configuration are more homogeneous at the scale of the whole Pyrenees, which in turn results in thinner curves than the ones corresponding to EEWS1 and EEWS2, whose dispersion indicates the spatial heterogeneity of the networks (Figure 4).

Discussion

Even though regional EEWS should ideally rely on seismic networks conceived to optimize robustness and fastness of early-warnings such as the one of the Irpinia area in Italy (ISNet, cf. Weber *et al.*, 2007), a look at the SISPyrr real-time network shows that the existing stations may be used for early warning purposes. Indeed, the current SISPyrr real-time network still satisfies an important part of EEWS requirements such as the real-time centralization of data. Moreover, even though it still has a limited coverage, the real-time network is composed of numerous seismic stations. In addition to its densification, one of the main ways of improving the network in order to implement a Pyrenean-EEWS would resort to low-latency data

transmission modes, preferring to "push" data by "sample by sample" sending rather than waveform packets as it is the case today.

Then, comparing intensity predictions related to regional seismicity with theoretical blind-zone extensions shows that in some cases the current network could be used efficiently to provide early warnings of a few seconds up to around 10s in areas where intensities greater or equal to VI (and thus damages) are expected, depending of the minimum number of stations used for the analysis as well as the location of the earthquakes. Nevertheless, Figure 2 also indicates that performances of an EEWS based on the SISPy network (configuration EEWS1) would not be homogeneous in the whole of the Pyrenees due to differences in seismic monitoring coverage. As a consequence, such a system would be much more efficient for earthquakes occurring east of the Pyrenean massif.

In the best-case scenario, if the Pyrenees were equipped with an EEWS based on a dense and homogeneous network with a low data-transmission latency (i.e. configuration EEWS3), areas potentially suffering damage (i.e. with intensities greater than or equal to VI) will likely have positive lead times for more than 70% of earthquakes with $M_L \geq 5.6$, while blind zones associated to the more frequent events with magnitudes around 5 are always larger than the damaged areas. In that case, lead times of about 10s are expected far from the epicenter, and it is highly probable that the associated intensities would be fairly weak (IV to VI). It should be borne in mind, however, that the considered IPE does not take into account neither potential site effects nor finite fault effects, which could cause damage at greater epicentral distances, in areas that could benefit from longer lead times.

Testing procedures for rapid assessment of earthquake magnitude

Waveforms catalogue

To be able to test current early-warning procedures for estimating magnitude in real time, a catalogue of representative seismic signals of the Pyrenean seismicity was first compiled. For the Pyrenees, an attempt was made to build a catalogue of waveforms, not statistically representative of seismicity all along the Pyrenean chain, but containing as many records as possible corresponding to all the magnitude ranges to be considered in order to better constrain the regression. In practice, the catalogue is composed of vertical

strong-motion and broad-band seismograms, provided by the various organizations that operate stations in the region. Finally, the waveform catalogue used in this study is made up of more than 2 400 vertical records corresponding to 193 events with local magnitudes ranging between 2.0 and 5.0 (Figure 5).

Data processing and analysis

Four scaling parameters have been selected to be applied in a test stage in the Pyrenees. τ_c (Kanamori , 2005) and τ_p^{\max} (Allen and Kanamori , 2003), that can be considered as representing respectively the predominant and the effective period of the P-waves over a fixed time window, are assumed to be empirically log-linearly correlated with magnitude (equation 1), while logarithms of peak displacement (Pd, (Wu and Zhao, 2006)) and peak velocity (Pv, (Wurman *et al.*, 2007)) of the first seconds of the P-waves depend both on magnitude and hypocentral distance (R) (equation 2).

$$\log_{10} y = a + b.M_L \quad (\text{equation 1})$$

where y represents either τ_c or τ_p^{\max} (in seconds), M_L is the local magnitude, and a and b are constants to be determined through a best-fit regression analysis.

$$\log_{10} y = a + b.M_L + c. \log_{10} R \quad (\text{equation 2})$$

where y represents either Pd (in cm) or Pv (in cm/s), and a, b and c are constants to be determined through a best-fit regression analysis.

So as to calculate these scaling parameters over the waveform catalog, records have been first corrected for the instrumental response and then the P-wave arrival manually picked on the unfiltered vertical records. Afterwards, after a simple or double integration process (depending of the type of instrument considered), records have been bandpass-filtered between 1 and 50 Hz using a Butterworth filter. Then, Pd, Pv, τ_c and τ_p^{\max} have been measured from the bandpass-filtered displacement and velocity records over a time window varying between 1 and 3 s after the first P-wave arrival. In order to avoid the “contamination” of the analyzed time-window with S-wave arrivals due to a time interval separating the onsets of the P and S waves shorter than the analysis duration, we reject all records where P and S arrivals are not far enough apart so as to compute the various selected parameters. Rather than systematically picking the S-wave onset, we consider the procedure proposed by Wurman *et al.* (2007) consisting in merely computing the simulated

arrival time for the S waves and retaining only those records in which the interval between P- and S-wave arrivals are greater than or equal to the duration of the analysis.

In order to guarantee the quality of our analysis, we also reject all the noisy records considering a minimum signal/noise ratio (SNR) equal to 60 for τ_c , 30 for τ_p^{\max} , and 10 for peak parameters P_d and P_v . Finally, for the sake of homogeneity, we focus our analysis on data recorded at a maximum epicentral distance of 100 km, which covers the maximum distance considered for early warning applications in the Pyrenees.

Results & discussion

Once the scaling-parameters have been computed using the Pyrenean earthquake waveform catalogue according to the procedure described above, they have been compared with reference magnitudes given by the Spanish IGN institute, in order to establish empirical relations enabling magnitude to be estimated in real time from an analysis of the first few seconds of the P wave. The peak parameters P_d and P_v being a function not only of magnitude but also of hypocentral distance, we have normalized them to a reference distance (fixed to 10 km) as suggested by Zollo *et al.* (2006) in order to remove the dependency on distance. Thus, we can then establish correlations between magnitude and normalized peak values P_d^{10} and P_v^{10} . To reduce the scatter as much as possible, it is better to study the values of the parameters under consideration averaged for each event rather than the results obtained station by station (Wu and Kanamori, 2005). To do so, we have not considered a mean of each of the scaling parameters, but rather a mean of their decimal logarithms, which are assumed to be linearly correlated with magnitude. Thus, and to avoid assigning too much weight to certain seismic traces, only those earthquakes for which we have at least two traces satisfying the selection criteria previously presented have been retained for analysis, thereby providing one mean value per event. An example of results obtained with a 3s time-window analysis are shown on Figure 6 while Table 2 summarizes all empirical relations established for the Pyrenees.

From a qualitative standpoint, examining Table 2 allows us to suggest that initial magnitude estimates are able to be derived from a very short analysis interval, which can subsequently be refined in the framework of an evolving approach. For example, shortening the analysis interval from three to two seconds for the case of a single station situated at the epicenter leads to a reduction of the blind zone by about 5 km. Moreover, it is interesting to note that the empirical correlations found for the Pyrenees are globally coherent with

those found in other more seismically-active regions of the world (Allen and Kanamori, 2003; Lancieri and Zollo, 2008; Zollo *et al.*, 2010).

Furthermore, it is shown that although each of the parameters τ_c , τ_p^{\max} , P_d^{10} and P_v^{10} would seem individually to be correlated with earthquake magnitude, some appear to be better proxies than others. Thus, from a statistical standpoint, a look on the coefficient of determination R^2 from Table 2 directly shows that the most satisfactory proxies for the Pyrenees are, in order, P_d^{10} and P_v^{10} (which are very similar by nature and cannot be considered as independent parameters), the frequency parameter τ_c , and lastly the frequency parameter τ_p^{\max} . Moreover, it should be noted that, as underlined by Kuyuk and Allen (2013b), the correlation observed on Figure 6 between τ_p^{\max} and $M < 3$ is possible because the high-frequencies intrinsic to smaller earthquakes have been preserved in our analysis, while the 3Hz low-pass filter initially proposed by Allen and Kanamori (2003) for the calculation of τ_p^{\max} removes them.

Due to the limited range of magnitudes considered in our analysis, it is not surprising to observe good correlation coefficients for analysis intervals shortened to 1 s (Table 2), as the events considered correspond to relatively short rupture times. In other words, the portion of the signal being analyzed, however short it may be, bears the signature of most, if not all the rupture, and accordingly of the magnitude. A study by Murphy and Nielsen (2009) showed that a 1-s analysis was long enough to assess moment magnitudes smaller than 6.0 (2s for $M < 6.5$; 3s for $M < 7.0$). For larger magnitudes, the authors observe a saturation of the proxy P_d . Theoretically, and taking into consideration a probable maximum magnitude of 6.5 for earthquakes in the Pyrenees, a 2-s analysis of the P wave would appear to suffice to determine the magnitude of Pyrenean events in real-time.

5. USEFULNESS OF A PYRENEAN EEWS

Another very important issue on the evaluation of the feasibility of an EEWS deals with the question of the end-users in order to assess if such a system could answer an existing need or not. In particular, the question of “How useful is an early warning for earthquakes associated to long recurrence intervals?” is preponderant and strongly linked to the potential end-users’ risk aversion. By its conception, it is consequently imperative that an EEWS should answer requirements of end-users in such a way to be adapted to their needs, and not the contrary as it is often the case. Henceforth, the approach of consultation of potential end-users is

necessary so as to better understand their requirements, their expectations (or conversely their absence of expectations), as well as their needs in terms of early warning. To that end, a survey of potential French end-users had been carried out in order to evaluate their wishes in terms of earthquake early warning.

Owing to the simulated performances of a virtual Pyrenean EEWS presented in chapter 4, the Pyrenean context only allows obtaining early warnings with short lead times. Rather than conducting an inquiry in an “open” way addressing all potential end-users, we then favor focusing on actors still well accustomed to crisis management and to the taking of preventive measures, represented by the managers of critical infrastructures. Indeed, these actors are likely to be interested in short seismic early warnings and are the most likely to act as a consequence. In addition, it is important to notice that the operational establishment of an EEWS is generally mainly conditioned on the criticality of exposed elements. As a result, our survey has focused on a limited number of industries and managers of critical networks and dams. Selection of targeted infrastructures was made considering, in priority, ‘facilities at risk’ according to the French seismic zonation (decree No. 2010-1255 of 22th October 2010). In addition, this list of addressees was completed with administrators of electricity, gas and high-speed train networks. Based on telephone interviews with persons in charge of security of each site/facility, this survey finally allowed gathering the opinion of eleven participants, covering the main regional managers of energy networks (electricity and gas), high-speed railways, two managers of dams representing together nearly 40 dams, as well as six industrial sites.

Results and discussion

Briefly summarized in Table 3, results of the survey highlight a favorable welcome of the idea to provide the Pyrenees with an EEWS in order to be warned of incoming strong motions, even though their destructive potential remains moderate. Indeed, despite the fact that the majority of conceivable early mitigation actions considered by participants are likely to need more time than the potential available lead times to be fully efficient, their early application seems to be considered as a way to reduce the risk of accidents as well as minimize economic losses, which are very important issues when considering strong interdependencies between critical infrastructures. Indeed, like Wu *et al.* (2013) who define utility curves for each « early action » as a function of available lead times, it seems to be too restrictive to consider that only fully-implemented actions before the arrival of strong shaking are useful: that is to say, for example, that the

expected benefit of an early process aiming at stopping a high-speed train is maximal if the train is still stopped when strong motions arrive, but remains positive since the speed has been significantly reduced. Otherwise, it can be noticed that while reduction of consequences thanks to the use of an EEWS is expected by most of participants, it does not constitute a necessary condition to use it since the early warning seems to be perceived as precious information in itself, showing that the utility of EEWS does not entirely rely on the ability of users to take early actions.

It should be noted that, due to their own experience, participants tend to favor manual or semi-automatic actions over fully-automatic actions in order to react on a case-by-case basis. Nevertheless, discussing individually with each of participants let us conclude that additional automatic actions compatible with very short lead-times could be conceivable by means of a shared stage of reflection requiring their accompaniment by specialists of EEWS. This points out the importance to educate potential end-users so they can understand the potential and limitations of EEW alerts.

Another aspect that can be pointed out from this survey is that – not surprisingly –potential Pyrenean EEWS end-users express a relatively strong demand for reliability of the system. Nevertheless a lesson can be learned that a slight priority is generally given to security since missed alerts are judged to be slightly more important than false alerts: that observation comes essentially from companies with a line of business identified as “industry”, for which this trend is particularly well marked (for these participants, the impact of missed alerts are on average one level higher than those of false alerts). Indeed, uncertainty being inevitably associated to each early warning, EEWS end-users have necessarily to define their own level of acceptability: does an addressee of an early warning prefer to be warned, in a secure sense, at the risk of taking useless (costly) prevention actions in case of false alert, or does he prefer to be warned, in a certain sense, at the risk of missing relevant alerts associated with high uncertainty. It is usually qualitatively considered that the greater the effect of damage (socio-economic, environmental, etc.), the lower the acceptability of the situation, which in terms of early warning is translated by favoring false alerts over missed alarms (Marzocchi and Woo, 2007). It is then not surprising that so-called “industrial” users be favorable to “security” as they are submitted to the EU SEVESO Directives on industrial accidents, which in France are associated with a very low acceptance of societal risk. This requirement of reliability of early warnings implies the necessity for

new EEWS to qualify the reliability of each alert by means of probabilistic assessments indicating probability of exceeding threshold values of given Intensity Measures (IMs): then these probabilities could be used within automatic Decision Support Systems (DSS) so as to perform real-time Cost-Benefit or Multi-Attribute analysis deciding the suitable actions (Le Guenan *et al.*, 2014).

6. CONCLUSION AND PERSPECTIVES

Aiming at dealing with the question of adaptability of the principle of EEWS to AMS without any preconceptions and bringing together technical aspects with operational needs of end-users, this explorative study does not allow concluding definitively on the interest to endow AMS, such as the Pyrenees, with EEWS. However, it highlighted several important points:

1. The methodological framework of early assessment of magnitude seems to be adapted for AMS, making possible the discrimination of numerous smaller earthquakes and less frequent damaging events.
2. Thanks to their continuous modernization, current seismological networks in AMS, such as the ones in the Pyrenees, may be considered as a basis for the development of EEWS, when their densification suggests the possibility of greatly improving lead times.
3. There is clear evidence that the Pyrenees – and probably most AMS – contain stakeholders interested in using seismic early warnings in alternative ways.

In spite of encouraging results, it is, therefore, important to point out that unless these alternative ways are considered, many barriers still remain for the practical establishment of EEWS in AMS: strong attenuation of destruction effects with distance, important installation and maintenance costs of efficient monitoring/communication/transmission solutions, difficulty in calibrating the system, difficulty in raising awareness among end-users in the long-term, necessity to identify and to maintain fast automatic mitigation-actions and so forth.

This being said, several ways offer new alternatives allowing enlarging the range of applications of earthquake early warnings. The first one comes from the field of new technologies and, more specifically, from micro-electronic strong-motion sensors (so-called MEMS). As suggested by Evans *et al.* (2014), some of these MEMS sensors are sensitive and reliable enough to be used for a wide range of applications. Like the

Quake Catcher Network (Cochran *et al.*, 2009) that makes use of MEMS data to produce ShakeMaps, the possibility of acquiring and networking many inexpensive sensors is giving birth to new approaches for seismic early warning (Fleming *et al.*, 2009; Wu *et al.*, 2013), which could possibly bypass some of the current barriers to the setting-up of EEWS in AMS.

Otherwise, indications given by potential Pyrenean end-users (Table 3) concerning on the one hand the value of the early warning in itself (independently of the way this warning could be used) and, on the other hand, the interest in engaging early application of actions in order to reduce risk of accidents and minimize economic losses, leads to a reconsideration of preconceived ideas that users may have about the utility of EEWS. Thus, it seems to be suitable to bring down the barrier between on one hand the « early stage » joining artificially and very closely early warnings with early actions, and in the other hand the « rapid stage » joining rapid-warnings and rapid-response, allowing the taking advantage of the early assessment of earthquake's focal parameters in order to improve rapidity of rapid response systems and, in doing so, acting in the first seconds after the earthquake. Should we move towards the concept of "Earthquake Early Response Systems" for AMS? This could result in early impact assessments, e.g. ShakeMaps or PAGER (Wald *et al.*, 2008), that are of primary importance for players in emergency management, enabling them to achieve very quickly an overall view of the damage situation and to implement appropriate response strategies.

Lastly, since one of the roles of engineering seismologists working on real-time seismology is to provide decision-makers and stakeholders with a methodological framework to guide their assessment of EEWS, this study constitutes a contribution of general interest. Indeed, it generalizes the blind-zone radius parameter proposed in 2013 by Kuyuk and Allen through $R_{bz}^{n,t}$, and introduces the lead-time parameter $LT_1^{n,t}$. These parameters can be used in order to assess potential performances of an EEWS, respectively, in terms of blind-zone radius and lead time, for different configurations of the system (number "n" of triggered stations and duration "t" of analysis of the P-wave) and protection objectives (intensity "I"). Therefore, this type of "a priori" feasibility analysis may be particularly useful in guiding the decision to move or not to the establishment of a regional EEWS. Then, the aforesaid parameters could, for example, be useful in the attempt to achieve a prototype EEWS that is currently under development in the SW of Spain, where large

magnitude earthquakes have occurred in the past (e.g. 1755 Lisbon earthquake, or M7.8, February 1969 earthquake) offshore San Vicente (Romeu *et al.*, 2014). However, this cannot replace the operational testing phase of an EEWS since many aspects such as source/propagation/site/etc. effects, instruments noise level, software robustness, online communication latency, etc., cannot be accounted for by the framework described in this paper.

7. ACKNOWLEDGEMENTS

This work was supported by the POCTEFA European program Interreg IVA 2007–2013 France-Spain-Andorra, as well as by the ALERTES-RIM project funded by the Spanish Ministry of Economy and Competitiveness. We thank the people that helped in the database creation (M. Calvet from OMP and E. Nus from ICGC), as well as J. Baron for her upstream work on data processing for magnitude scaling-parameters and J. Douglas for his comments that greatly helped us during this study. Special thanks to E. Buforn for her invitation to contribute to this special issue and to J. Douglas for proof reading the final version. Finally, we are very grateful to the three anonymous reviewers whose comments greatly improved the quality of the manuscript.

8. REFERENCES

- Allen, R.M., and Kanamori, H. (2003). The potential for earthquake early warning in southern California. *Science*, 300(5620), 786-789.
- Bakun, W. H., & Scotti, O. (2006). Regional intensity attenuation models for France and the estimation of magnitude and location of historical earthquakes. *Geophysical Journal International*, 164(3), 596-610.
- Behr Y, Clinton J, Cua G, Cauzzi C, Heimers S, Kästli P, Becker J, Heaton T (2013) "Evaluation of Real-Time and Off-Line Performance of the Virtual Seismologist Earthquake Early Warning Algorithm in Switzerland", EGU General Assembly, Vienna, Austria, abstract no. 8824
- Bertil D., Roviro J., Jara J.A., Susagna T., Nus E., Goula X., Colas B., Dumont G., Cabanas L., Anton R., Calvet M. (2012). ShakeMap implementation for Pyrenees in France-Spain border: regional adaptation and earthquake rapid response process. Proc. of the 15th WCEE, paper n° 2078.
- BRGM, EDF, IRSN (2010) – SISFRANCE database of historical seismicity in France (www.sisfrance.net).

- Carranza, M., Buforn, E., Colombelli, S., Zollo, A. (2013). Earthquake early warning for southern Iberia: A P wave threshold-based approach. *Geophys. Res. Lett.*, 40-17, p. 4588-4593
- Cochran, E.S., J.F. Lawrence, C. Christensen, and R. Jakka, The Quake-Catcher Network: Citizen science expanding seismic horizons, *Seismological Research Letters*, 80, 26-30, 2009.
- Evans, J. R., Allen, R. M., Chung, A. I., Cochran, E. S., Guy, R., Hellweg, M., & Lawrence, J. F. (2014). Performance of several low-cost accelerometers. *Seismological Research Letters*, 85(1), 147-158.
- Fleming, K., Picozzi, M., Milkereit, C., Kuehnlentz, F., Lichtblau, B., Fischer, J., Kafadar, N. (2009). The self-organizing seismic early warning information network (SOSEWIN). *Seismological Research Letters*, 80(5), 755-771.
- Goula, X., Dominique, P., Colas, B., Jara, J.A., Roca, A. and Winter, T. (2008). Seismic rapid response system in the Eastern Pyrenees. XIV World Conference on Earthquake Engineering, October 12-17, Beijing, China.
- Gutenberg, B. and Richter, C. F. (1954). *Seismicity of the Earth and Associated Phenomena*, Princeton University Press, Princeton, NJ.
- Heidari, R., Shomali, Z., and Ghaymaghamian, M. R. (2013). Magnitude-scaling relations using period parameters τ_c and τ_p (super max), for tehran region, Iran. *Geophysical Journal International*, 192(1), 275-284.
- Kanamori, H. (2005). Real-time seismology and earthquake damage mitigation. *Annual Review of Earth and Planetary Sciences* 33, 195–214.
- Kuyuk, H. S., Allen, R. M., Brown, H., Hellweg, M., Henson, I., & Neuhauser, D. (2014). Designing a network-based earthquake early warning algorithm for california; Elarms-2. *Bulletin of the Seismological Society of America*, 104(1), 162-173.
- Kuyuk, H. S., and Allen, R. M. (2013a). Optimal seismic network density for earthquake early warning: A case study from California, *Seismol. Res. Lett.*, 84(6), 946–954.
- Kuyuk, H. S., and Allen, R. M. (2013b). A global approach to provide magnitude estimates for earthquake early warning alerts. *Geophysical Research Letters*, 40(24), 6329-6333.

Lancieri M., and A. Zollo (2008). A Bayesian approach to the realtime estimation of magnitude from the early P and S wave displacement peaks. *Journal of Geophysical Research* 113, B12302.

Lancieri, M., Fuenzalida, A., Ruiz, S., and Madariaga, R. (2011). Magnitude scaling of early-warning parameters for the Mw 7.8 Tocopilla, Chile, earthquake and its aftershocks. *Bulletin of the Seismological Society of America*, 101(2), 447-463.

Le Guenan, T., Auclair, S., Douglas, J., Loschetter, A., Smay, F., Taillefer, N. (2014). Participatory decision making for operational earthquake forecasting and Earthquake early warning. *Proceeding of the 2nd European Conference on Earthquake Engineering and Seismology (2ECEES)*. Istanbul, August 24-29 2014.

Marzocchi, W., and G. Woo (2007). Probabilistic eruption forecasting and the call for an evacuation, *Geophys. Res. Lett.*, 34, L22310.

Medvedev, S., Sponheuer, W. and Karník, V. (1964). Neue seismische Skala Intensity scale of earthquakes, 7. *Tagung der Europäischen Seismologischen Kommission vom 24.9. bis 30.9.1962*. In: Jena, Veröff. Institut für Bodendynamik und Erdbebenforschung in Jena, Deutsche Akademie der Wissenschaften zu Berlin, 77, 69-76.

Murphy, S., and Nielsen, S. (2009). Estimating earthquake magnitude with early arrivals: A test using dynamic and kinematic models. *Bulletin of the Seismological Society of America* 99:1, 1–23.

Nigg J.M. 1995. Risk communication and warning systems. In Hortlick-Jones T., A. Amendola and R. Casale (eds.). *Natural Risk and Civil Protection*. London : E & FN Spon. Pp. 369-382.

Olivera, C., Redondo, E., Lambert, J., Riera Melis, A. and Roca, A. (2006) *Els terratrèmols dels seglesXIV i XV a Catalunya*. Monografies Institut Cartogràfic de Catalunya.

Romeu, N., Goula, X., Jara, J.A., Colom, Y. and, Susagna, T. (2014). An Earthworm based prototype of an EEWS for SW Iberia (this issue).

Secanell, R., Bertil, D., Martin, C., Goula, X., Susagna, T., Tapia, M, Dominique, Carbon, D. and Fleta, J. (2008). Probabilistic seismic hazard assessment of the Pyrenean region, *Journal of Seismology* 12: 323-341.

Souriau, A. and Pauchet, H. (1998). A new synthesis of Pyrenean seismicity and its tectonic implications. *Tectonophysics* 290, 221-244.

Souriau, A., Rigo, A., Dubos, N., Sylvander, M. and Ponsolles, C. (2005). Analysis of the seismicity in the central part of the Pyrennes (France) and tectonic implications. *Journal of Seismology* 9, 211-222.

Suárez, G., D. Novelo, and E. Mansilla (2009). Performance evaluation of the seismic alert system (SAS) in Mexico City: A seismological and a social perspective. *Seism. Res. Lett.* 80 (5), 707–714.

Terrier, M., Bertrand, G. and Roullé A. (2006). Document d'information sur le risque sismique à destination des médias. Rapport BRGM/RP-55012-FR, 219p, 128 fig

Wald, D. J., P. S. Earle, T. I. Allen, K. Jaiswal, K. Porter, and M. Hearne (2008). Development of the U.S. Geological Survey's PAGER system (Prompt Assessment of Global Earthquakes for Response). Proc. 14th World Conf. Earthq. Eng., Beijing, China, 8 pp.

Wald, D.J., Quitoriano, V., Heaton, T.H., Kanamori, H., Scrivner, C.W., and Worden, B.C., 1999, TriNet "ShakeMaps": Rapid generation of peak ground-motion and intensity maps for earthquakes in southern California: *Earthquake Spectra*, v. 15, no. 3, p. 537-556.

Weber, E., Convertito, V., Iannaccone, G., Zollo, A., Bobbio, A., Cantore, L., Satriano, C. (2007). An advanced seismic network in the southern Apennines (Italy) for seismicity investigations and experimentation with earthquake early warning. *Seismological Research Letters*, 78(6), 622-634.

Wu, S., Beck, J. L. and Heaton, T. H. (2013), ePAD: Earthquake Probability-Based Automated Decision-Making Framework for Earthquake Early Warning. *Computer-Aided Civil and Infrastructure Engineering*, 28: 737–752.

Wu, Y. M., and L. Zhao (2006), Magnitude estimation using the first three seconds p-wave amplitude in earthquake early warning, *Geophys. Res. Lett.*, 33, L16312.

Wu, Y., Chen, D., Lin, T., Hsieh, C., Chin, T., Chang, W., Ker, S. (2013). A high-density seismic network for earthquake early warning in taiwan based on low cost sensors. *Seismological Research Letters*, 84(6), 1048-1054.

Wu, Y.M., and Kanamori, H. (2005). Rapid assessment of damage potential of earthquakes in Taiwan from the beginning of P waves. *Bulletin of the Seismological Society of America* 95:3, 181–185.

Wurman, G., Allen, R.M., and Lombard, P. (2007). Toward earthquake early warning in northern California. *Journal of Geophysical Research* 112:B8.

Zollo A., O. Amoroso, M. Lancieri, Y.-M. Wu, H. Kanamori (2010). A threshold-based earthquake early warning using dense accelerometer networks. *Geophys. J. Int.*, 183, 963–974.

Zollo, A., Lancieri, M. and Nielsen, S. (2006). Earthquake magnitude estimation from peak amplitudes of very early seismic signals on strong motion records. *Geophysical Research Letters* 33:23, L23312.

9. ILLUSTRATIONS

	Basic Requirements	Recommended Requirements
Seismic sensor	- Should be adequate for monitoring of near-field earthquakes in terms of bandwidth, dynamic range, protection against ambient conditions, etc.	- Priority for strong-motion sensors - Redundancy
Data acquisition system	- Should be adequate for the kind of seismic signal to record in terms of bandwidth, sample rate, dynamic range, adequate signal/noise ratios, resolution and local archiving	- Redundancy
Communication systems	- Must be “real-time” - Rugged to support remote site climatic conditions - Adequate for data transmission requirements in terms of bandwidth, SLA and reliability	- Redundancy - Minimum latency: priority for continuous “sample by sample” transmission rather to “data-packaging” (or packet-length as short as possible) - Use of non-terrestrial communication system
Power supply system	- Rugged to support remote site climatic conditions - UPS or equivalent system installed	- Redundancy
Data processing systems	- Must be robust enough for the continuous processing of data coming from real-time stations - Centralized analysis by a data-center or not-centralized thanks to a pre-analysis at each station	- Redundancy - Minimum latency
Dissemination of the early-warning	- Rugged communication - Robust means of dissemination adapted to each user	- Redundancy - Minimum latency

Table 1. Technical requirements for an EEWS seismological network

y	Analysis length	a		b		R ²	σ
τ _c	1 s	-1.6014	± 0.0689	0.2566	± 0.0198	0.88	0.07
	2 s	-1.5267	± 0.0896	0.2326	± 0.0254	0.80	0.09
	3 s	-1.4870	± 0.1154	0.2198	± 0.0319	0.71	0.10
τ _p ^{max}	1 s	-1.1360	± 0.0611	0.1354	± 0.0178	0.72	0.07
	2 s	-1.0750	± 0.0577	0.1246	± 0.0168	0.70	0.07
	3 s	-1.1286	± 0.0564	0.1413	± 0.0164	0.76	0.07
P _d ¹⁰	1 s	-8.6609	± 0.1726	0.9279	± 0.0509	0.93	0.21
	2 s	-8.7822	± 0.2049	1.0007	± 0.0604	0.92	0.00
	3 s	-8.4182	± 0.1831	0.9049	± 0.0527	0.93	0.19
P _v ¹⁰	1 s	-6.5038	± 0.1803	0.7849	± 0.0531	0.90	0.22
	2 s	-6.6589	± 0.1766	0.8536	± 0.0521	0.92	0.00
	3 s	-6.3537	± 0.1582	0.7821	± 0.0455	0.93	0.17

Table 2. Summary of the empirical scaling relations established for Pyrenees, with $\log_{10} y = a + b.M_L$, R^2 the coefficient of determination representing the percentage of the y data that can be explained by the log-linear relationship with M_L , and σ the standard deviation of this relationship.

Questions	Answers			
Line of business	Industry	Energy	Dam	Transportation
	55%	18%	18%	9%
Do you think that your installations are exposed to seismic risk?	Yes	No		
	91%	9%		
In your opinion, what could be maximal consequences of a major regional earthquake on your installations?	Without effects	Minor damages	Notable damages	Generalized damages
	0%	35%	45%	18%
Does an early warning announcing coming destructive strong motions seem to you useful for your company?	Yes	No	Without opinion	
	73%	9%	18%	
- If yes, from what level of expected effects do you need to be alerted?	Slight damages	Moderate damages	Major damages	
	36%	45%	9%	
Could you precise minimum lead time that you think to be enough to take automatic actions to put in security your installations?	<5s	5-10s	10-20s	>20s
	0%	9%	18%	64%
What kinds of actions seem to you conceivable for your installations with different lead-times?				
Industry	≥5s: - warning of the staff in order to move away from critical installations/processes - stopping critical chemical reactions by introduction of security bars (complete stop after 1h)			

	- stopping circulation of chemicals fluids (complete stop after few seconds) ≥10s: Depressurization of (surface) installations and closing of wells ≥20s: Closure of valves															
Energy	≥20s: Semi-automatic targeted local closing of networks															
Dam	≥10s: Isolating of upstream water by mean of automatic closing of front gates, and stopping of production sets (semi-automatic actions)															
Transportation	≥20s: Warning of the traffic control center in order to get under way semi-automatic stop of high-speed trains															
In your opinion, could consequences of strong earthquake be reduced thanks to the use of a EWS?	<table border="1"> <tr> <td>Yes</td> <td>No</td> <td>Without opinion</td> </tr> <tr> <td>82%</td> <td>9%</td> <td>9%</td> </tr> </table>	Yes	No	Without opinion	82%	9%	9%									
Yes	No	Without opinion														
82%	9%	9%														
- If yes, for what kind of consequences?	<table border="1"> <tr> <td>Material damages</td> <td>Risk of over accident</td> <td>Financial loss (due to activity stop, loss of data, etc.)</td> <td>Other</td> </tr> <tr> <td>60%</td> <td>80%</td> <td>40%</td> <td>20%</td> </tr> </table>	Material damages	Risk of over accident	Financial loss (due to activity stop, loss of data, etc.)	Other	60%	80%	40%	20%							
Material damages	Risk of over accident	Financial loss (due to activity stop, loss of data, etc.)	Other													
60%	80%	40%	20%													
If your company adhered to a EWS, at which point would it be important to notice a reduction of consequences in case of earthquake?	<table border="1"> <tr> <td>Not important at all</td> <td></td> <td>→</td> <td></td> <td>Extremely important</td> </tr> <tr> <td>1</td> <td>2</td> <td>3</td> <td>4</td> <td>5</td> </tr> <tr> <td>0%</td> <td>27%</td> <td>27%</td> <td>36%</td> <td>0%</td> </tr> </table>	Not important at all		→		Extremely important	1	2	3	4	5	0%	27%	27%	36%	0%
Not important at all		→		Extremely important												
1	2	3	4	5												
0%	27%	27%	36%	0%												
In your opinion, what would be the impact of a false alert for your company?	<table border="1"> <tr> <td>No impact</td> <td></td> <td>→</td> <td></td> <td>Major impact</td> </tr> <tr> <td>1</td> <td>2</td> <td>3</td> <td>4</td> <td>5</td> </tr> <tr> <td>9%</td> <td>0%</td> <td>27%</td> <td>45%</td> <td>9%</td> </tr> </table>	No impact		→		Major impact	1	2	3	4	5	9%	0%	27%	45%	9%
No impact		→		Major impact												
1	2	3	4	5												
9%	0%	27%	45%	9%												
In your opinion, what would be the impact of a missed alert for your company?	<table border="1"> <tr> <td>No impact</td> <td></td> <td>→</td> <td></td> <td>Major impact</td> </tr> <tr> <td>1</td> <td>2</td> <td>3</td> <td>4</td> <td>5</td> </tr> <tr> <td>0%</td> <td>9%</td> <td>18%</td> <td>45%</td> <td>18%</td> </tr> </table>	No impact		→		Major impact	1	2	3	4	5	0%	9%	18%	45%	18%
No impact		→		Major impact												
1	2	3	4	5												
0%	9%	18%	45%	18%												

Table 3. Synthetic view of answers to the main questions of the survey

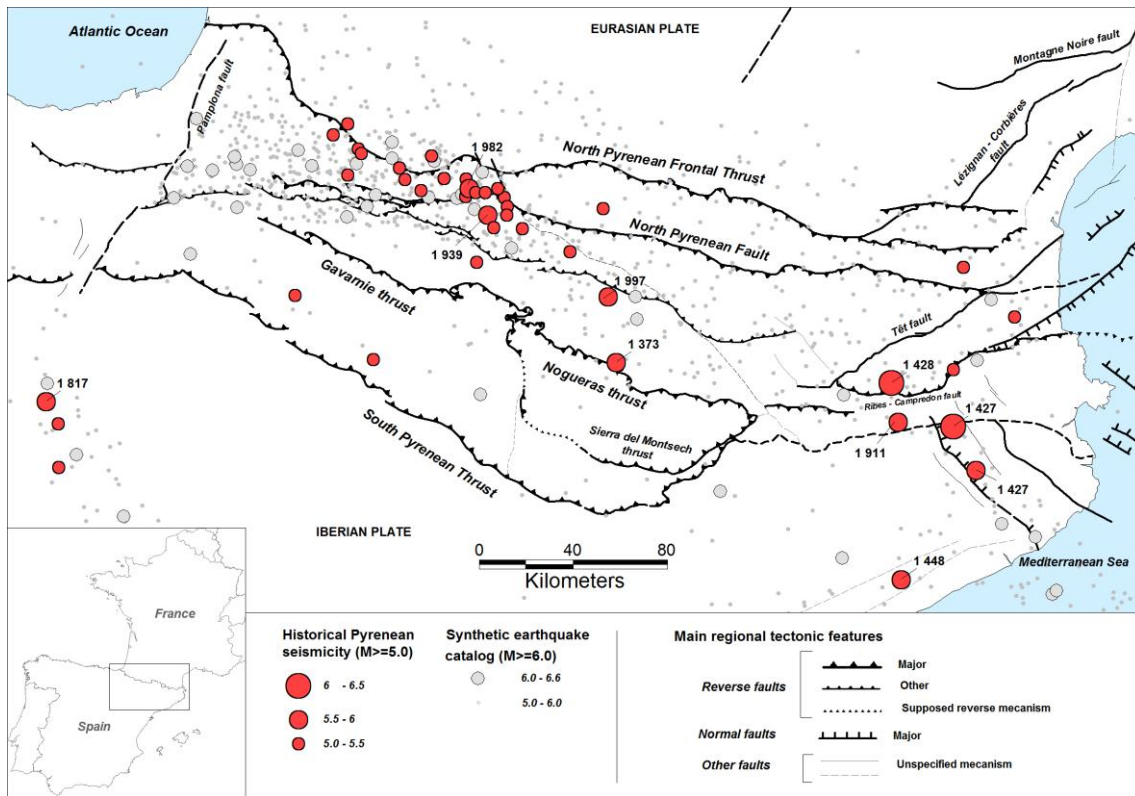


Figure 1. Localization of the studied area and of the main regional seismotectonic features (Terrier et al., 2006). The historical Pyrenean seismicity (Secanell et al., 2008) is represented as well as the synthetic earthquake catalog for an “observation” duration of 10 000 years and $M \geq 5.0$.

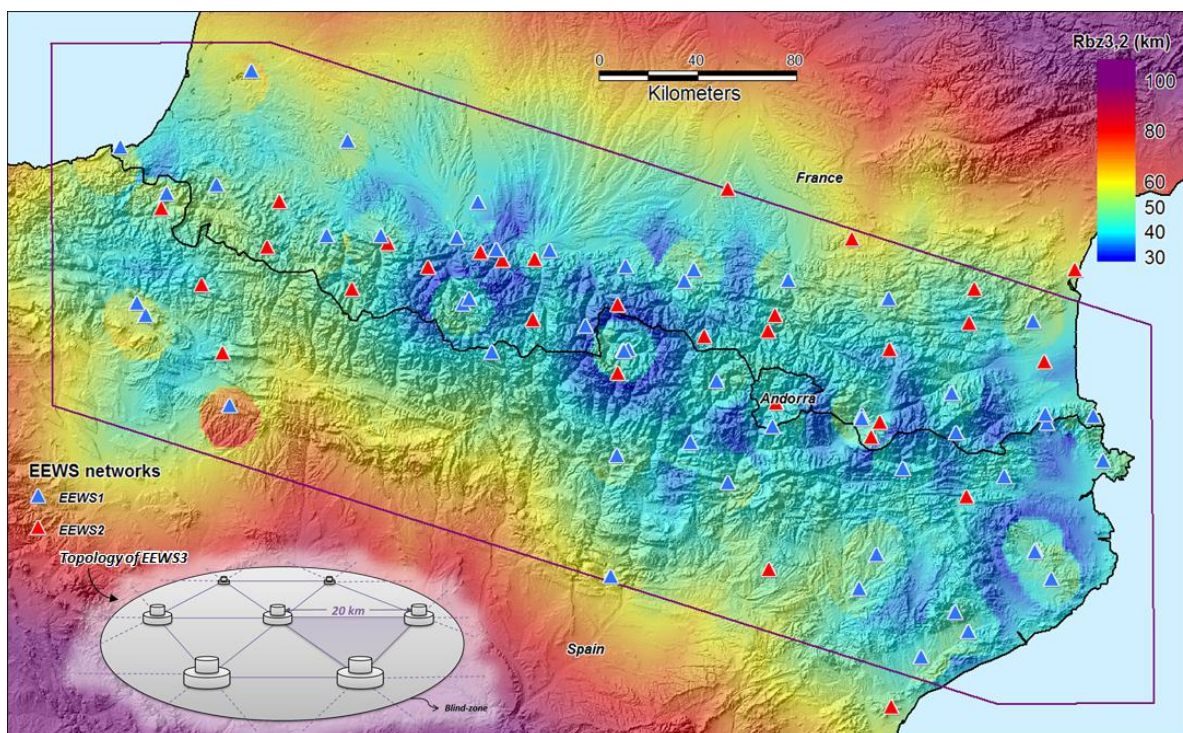


Figure 2. Simulated performances of a virtual Pyrenean EEWS based on the EEWS1 SISPy network: extension of the blind zone as a function of the hypocentral location with an EEWS using a minimum of three records with 2 seconds of the P-wave ($R_{bz}^{3,2}$). EEWS1 and EEWS2 seismic networks are also represented. The SISPy project area is represented by the purple polygon. Topology of the ideal network “EEWS3” is schematically shown in the bottom left-hand corner of the figure.

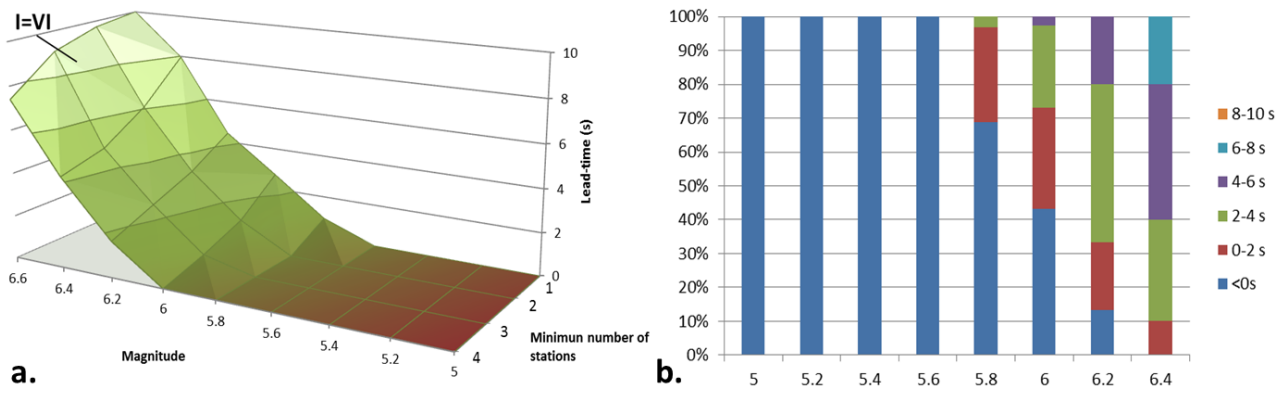


Figure 3. a. Mean lead-time per magnitude-range corresponding to isoseismal curves $I=VI$ (which corresponds more or less to the threshold of apparition of damages) induced by earthquakes of the synthetic catalog (see Figure 2), considering a virtual Pyrenean EEWS based on the EEWS1 network (analysis of the first two seconds of the P-waves on the records of the first triggered stations – ranging from one to four: respectively $LT_{I=VI}^{1,2}$, $LT_{I=VI}^{2,2}$, $LT_{I=VI}^{3,2}$ and $LT_{I=VI}^{4,2}$). b. Repartition of lead-times when considering at least three triggered stations ($LT_{I=VI}^{3,2}$).

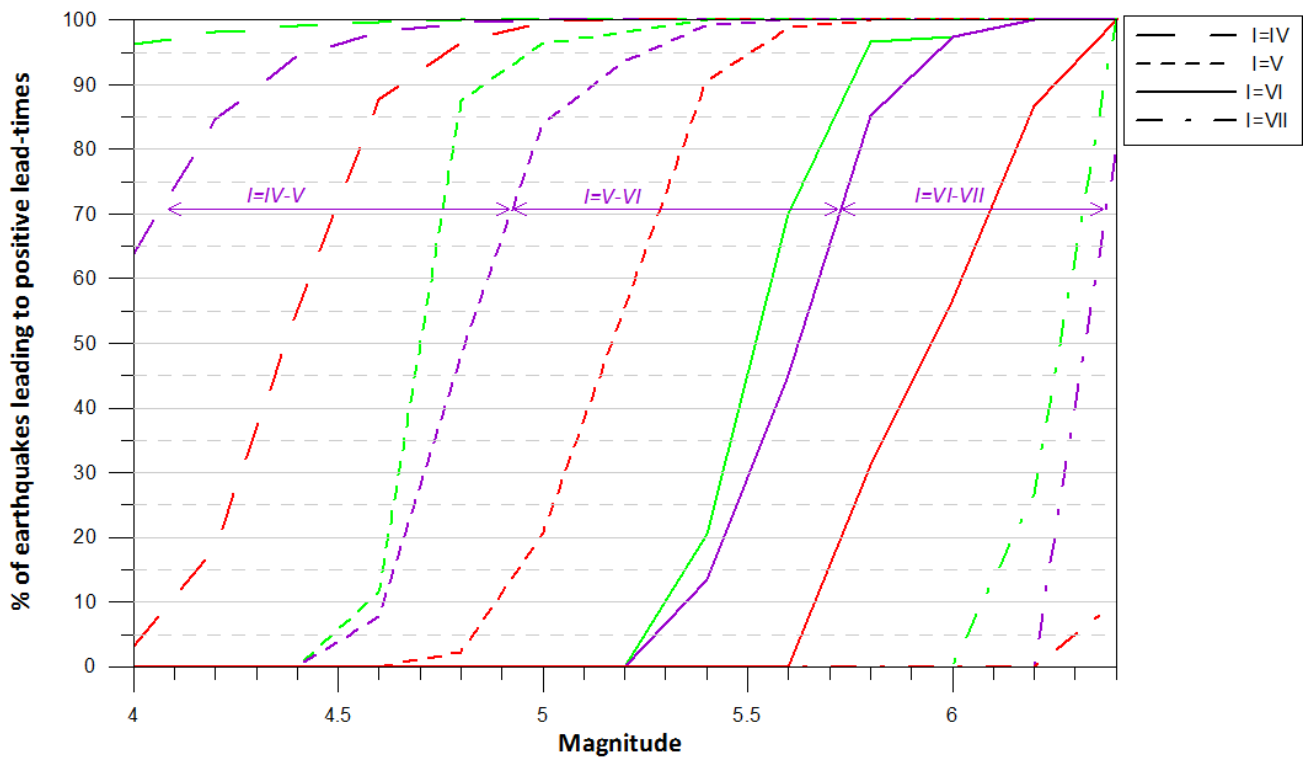


Figure 4. Percentage of earthquakes from the synthetic catalog leading to positive lead-times for areas with given values of intensity, and for different configurations of EEWS (scenarios EEWS1 in red, EEWS2 in purple and EEWS3 in green) - (analysis of the first two seconds of the P-waves on the records of the first three triggered stations).

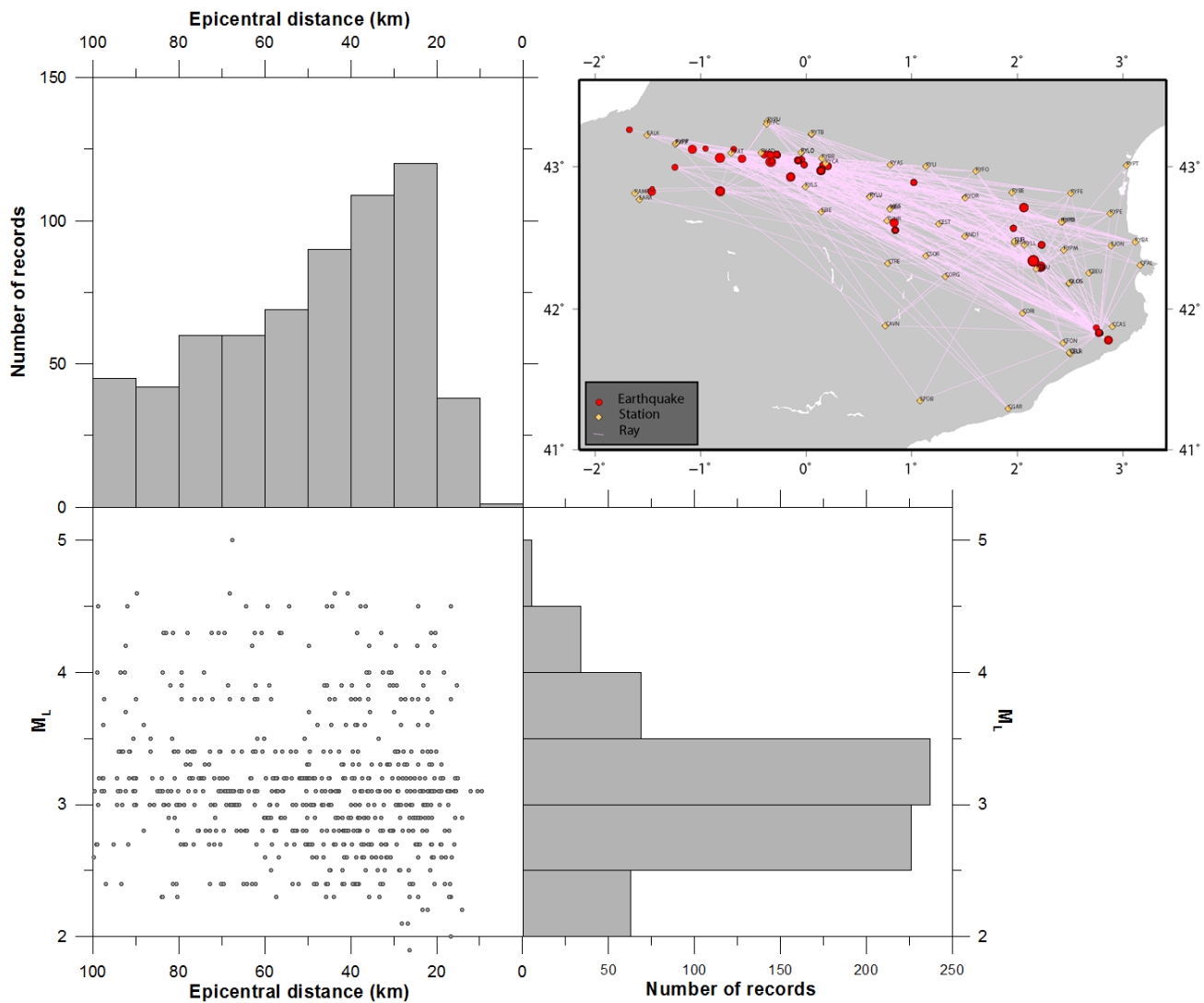


Figure 5. Representation of the study data-set with the distribution of the seismic signals as a function of magnitude and epicentral distance. Top right-hand corner: map of earthquakes included in the catalogue and of corresponding recording seismological stations.

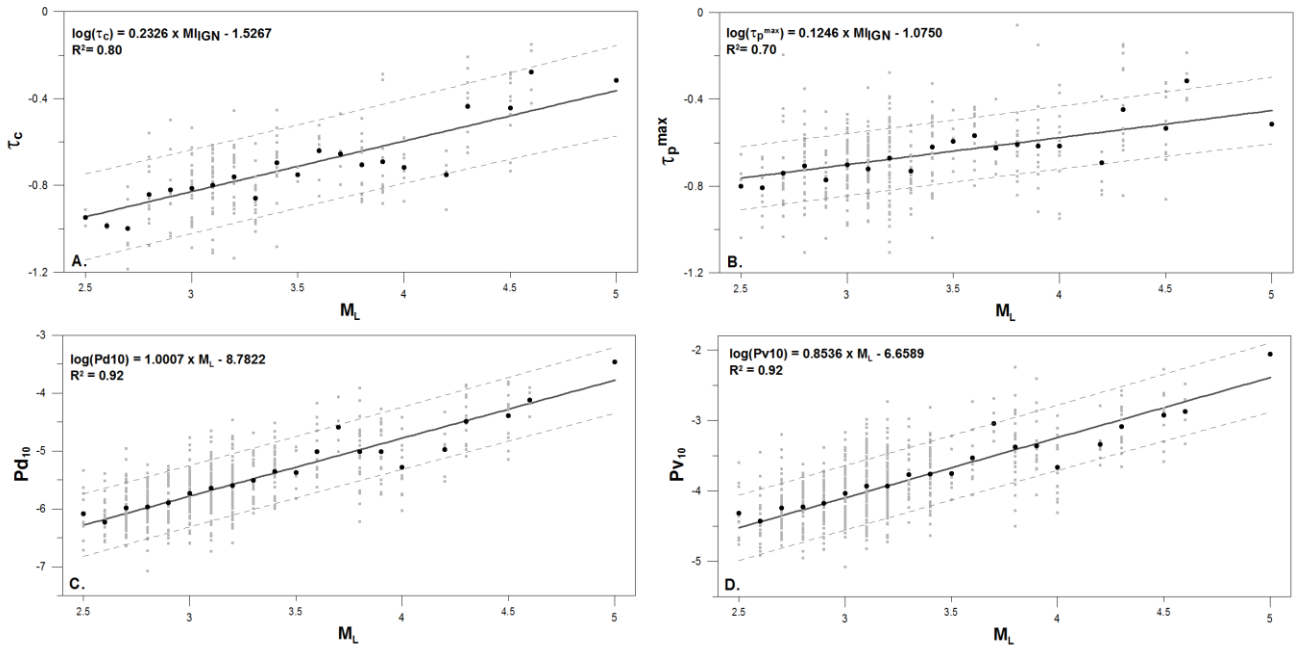


Figure 6. A, B, C and D. Empirical correlations linking proxy parameters τ_c , τ_p^{\max} , P_d^{10} and P_v^{10} (means per event) with the local magnitude of Pyrenean earthquakes. Calculations carried out on the signals in the catalogue that satisfy the selection criteria (analysis interval set at 3 s). The straight line obtained by linear regression is shown in black, while the grey dashed lines indicate the confidence interval at 95 % for a new observation.

10. APPENDIX

Table 4. List of stations considered for the early warning scenarios. IDs with an asterisk indicate planned stations whose name and coordinates are likely to change. * Whilst the typical latency time corresponds to the mean value coming from the 48h analysis, the value indicated for station PYLO had been increased by one standard-deviation because of its very low mean value.

Station ID	Owner	Lat.	Long.	Sensor type	RT	Typical latency time (s)
ARBS	IEA	42.43	1.53	BB	Yes	3.50
ATE	OMP	43.09	-0.70	BB	Yes	6.59
AVIN	ICGC	41.85	1.97	ACC	Yes	-
CARA	ICGC	42.71	0.82	BB	Yes	-
CARF	OMP	42.72	2.11	BB	No	-
CAVN	ICGC	41.88	0.75	BB	Yes	3.51
CBEU	ICGC	42.26	2.68	BB	Yes	3.15
CBRU	ICGC	42.28	2.18	BB	Yes	3.98
CCAS	ICGC	41.88	2.90	BB	Yes	2.71
CELS	ICGC	41.69	2.50	ACC	Yes	-
CEST	ICGC	42.60	1.25	BB	Yes	3.44
CFON	ICGC	41.76	2.43	BB	Yes	3.84
CLLI	ICGC	42.48	1.97	BB	Yes	3.17
CORG	ICGC	42.23	1.32	BB	Yes	3.53
CORI	ICGC	41.97	2.05	BB	Yes	3.23
CPAL	ICGC	42.31	3.16	BB	Yes	3.11
CSOR	ICGC	42.37	1.13	BB	Yes	3.22
CTRE	ICGC	42.32	0.77	BB	Yes	2.92
EALK	IGN	43.22	-1.51	BB	Yes	-

EARA	IGN	42.77	-1.58	BB	Yes	-
EBIE	IGN	42.69	0.14	BB	Yes	8.40
EJON	IGN	42.45	2.89	BB	Yes	7.05
ELIZ	IGN	43.16	-1.53	BB	No	-
EMIR	IGN	41.91	1.53	BB	No	-
EORO	IGN	42.89	-1.31	BB	No	-
EPF	CEA/DASE	43.03	0.34	BB	No	-
ETSF	CEA/DASE	42.90	-0.56	BB	No	-
FBRR	IGN	41.42	2.13	ACC	No	-
FESP	BRGM	42.82	2.82	ACC	Yes	3.28
FILF	OMP	42.56	2.42	BB	Yes	-
FMON	BRGM	43.06	0.42	ACC	Yes	3.23
FNEB	BRGM/OMP	42.90	2.11	ACC/BB	Yes	3.25
GIRR	IGN	41.99	2.83	ACC	Yes	-
GIRS	ICGC	41.98	2.82	ACC	Yes	-
GRAM	ICGC	41.60	2.27	ACC	Yes	-
GRBF	OMP	42.84	1.54	BB	No	-
LABF	OMP	43.05	0.07	BB	No	-
LARF	OMP	43.04	-0.99	BB	No	-
LLIS	ICGC	42.46	1.97	ACC	Yes	-
MELF	OMP	42.87	0.76	BB	No	-
MLS	OMP	42.96	1.09	BB	Yes	2.92
OLOS	IGN	42.18	2.49	ACC	No	-
ORDF	OMP	43.21	-0.94	BB	No	-

OSSF	OMP	43.26	-1.26	BB	Yes	-
PAMP	IGN	42.81	-1.63	ACC	Yes	-
PAND	OMP	42.52	1.55	BB	No	-
PYAD	OMP	43.10	-0.43	ACC	Yes	-
PYAS	BRGM	43.01	0.80	ACC	Yes	-
PYBA	BRGM	42.47	3.12	ACC	Yes	-
PYBB	OMP	43.06	0.15	ACC	Yes	-
PYCA	BRGM	43.02	0.18	ACC	No	-
PYFE	BRGM	42.81	2.51	ACC	No	-
PYFO	BRGM	42.97	1.61	ACC	Yes	-
PYHE	OMP	43.38	-1.75	ACC	Yes	-
PYLI	BRGM	43.00	1.14	ACC	Yes	-
PYLL	BRGM	42.45	2.07	ACC	No	-
PYLO	OMP	43.10	-0.05	BB	Yes	1.31*
PYLS	BRGM	42.86	-0.01	ACC	Yes	-
PYLU	OMP	42.79	0.60	ACC	Yes	-
PYOR	BRGM	42.78	1.51	ACC	No	-
PYPE	BRGM	42.67	2.88	ACC	No	-
PYPM	BRGM	42.42	2.44	ACC	Yes	-
PYPP	OMP	-1.23	43.17	ACC	Yes	-
PYPT	BRGM	43.01	3.03	ACC	No	-
PYTB	OMP	43.23	0.05	ACC	Yes	-
RESF	OMP	42.81	0.34	BB	No	-
REYF	OMP	43.07	-0.39	BB	No	-

SALF	OMP	42.76	1.19	BB	No	-
SJAF	OMP	42.48	2.88	BB	Yes	2.75
TERF	OMP	43.68	-1.11	BB	Yes	-
tmpA*	OMP	43.12	1.92	BB	No	-
tmpB*	OMP	43.30	1.30	BB	No	-
tmpC*	OMP	42.99	-0.19	BB	No	-
tmpD*	CEA/RESIF	42.94	2.53	BB	No	-
TUNR	IGN	42.62	0.77	ACC	No	-
URDF	OMP	43.44	-0.61	BB	Yes	-
VALF	OMP	42.40	2.02	BB	No	-
VIEF	OMP	42.88	0.02	BB	Yes	-
VIER	IGN	42.70	0.79	ACC	Yes	-
VIES	ICGC	42.70	0.80	ACC	Yes	-
YARA	IGN	42.65	-1.19	BB	No	-
YSOS	IGN	42.46	-1.15	BB	Yes	-
