



**HAL**  
open science

## Measurement of ocean waves velocity fields from a single spot-5 dataset using correlation between panchromatic and multispectral bands

Marcello de Michele, Sebastien Leprince, Jérôme Thiebot, Daniel Raucoules,  
Renaud Binet

### ► To cite this version:

Marcello de Michele, Sebastien Leprince, Jérôme Thiebot, Daniel Raucoules, Renaud Binet. Measurement of ocean waves velocity fields from a single spot-5 dataset using correlation between panchromatic and multispectral bands. IEEE International Geoscience and Remote Sensing Symposium: IGARSS '12: Remote Sensing for a Dynamic Earth, Jul 2012, München, Germany. paper number #1681. hal-00697335

**HAL Id: hal-00697335**

**<https://brgm.hal.science/hal-00697335>**

Submitted on 15 May 2012

**HAL** is a multi-disciplinary open access archive for the deposit and dissemination of scientific research documents, whether they are published or not. The documents may come from teaching and research institutions in France or abroad, or from public or private research centers.

L'archive ouverte pluridisciplinaire **HAL**, est destinée au dépôt et à la diffusion de documents scientifiques de niveau recherche, publiés ou non, émanant des établissements d'enseignement et de recherche français ou étrangers, des laboratoires publics ou privés.

# MEASUREMENT OF OCEAN WAVES VELOCITY FIELDS FROM A SINGLE SPOT-5 DATASET USING CORRELATION BETWEEN PANCHROMATIC AND MULTISPECTRAL BANDS.

*Marcello de Michele<sup>1</sup>, Sébastien Leprince<sup>2</sup>, Jérôme Thiébot<sup>1</sup>, Daniel Raucoules<sup>1</sup>, and Renaud Binet<sup>3</sup>*

<sup>1</sup> Bureau de Recherches Géologiques et Minières (BRGM), Service Risques Naturels, 3 Av. C. Guillemin, 45000, Orléans, France

<sup>2</sup> California Institute of Technology, Division of Geological and Planetary Sciences, Pasadena, California 91125, USA

<sup>3</sup> Commissariat à l'Energie Atomique et aux Energies Alternatives, Siège-Saclay, 75000, Paris, France

## 1. ABSTRACT

Ocean waves represent an important oceanographic phenomenon for manifold reasons. For instance, they strongly influence the most superficial water layer where the exchanges and heat transfer between the ocean and the atmosphere take place. Moreover, the ocean swell highly affects coastal areas, being one of the principal agents responsible for coastal erosion. Furthermore, their propagation pattern being affected by shallow bathymetry, the understanding of the local ocean waves' velocity field and its temporal variation can provide invaluable information about the ocean floor topography at shallow depth. Therefore, measuring the different parameters that characterize ocean waves' velocity field is of primary importance. We present a method based on space-borne optical imagery from the SPOT-5 satellite to directly measure the ocean waves' velocity field.

The panchromatic and multispectral scenes acquired by SPOT 5 the same day on the same area are not strictly superimposable due to the different locations of the CCDs in the focal plane of the instrument. Such a difference corresponds to a time shift of about 2s between the two images. Here, we propose a method that exploits this temporal lag between the panchromatic and multispectral scenes to measure the ocean surface velocity field. Differences of ocean surface features' locations in the two scenes are identified and quantified using sub-pixel image correlation techniques (COSI-corr software, [1]). The measured offsets therefore represent the displacements of the corresponding ocean surface features during the 2s time span and can be interpreted as a wave velocity field.

As application test site, we selected an area offshore La Reunion Island. In Figure 1, we compared - upon certain assumptions: in particular the possibility of separating the swell from the wind generated waves by filtering in the Fourier domain - the results against a swell propagation model (SWAN, [2]).

The consistency between the observation and the model confirms that the method is reliable and can be immediately extended to other (in particular, higher resolution sensors able to provide better precision on the results) push-broom sensors.

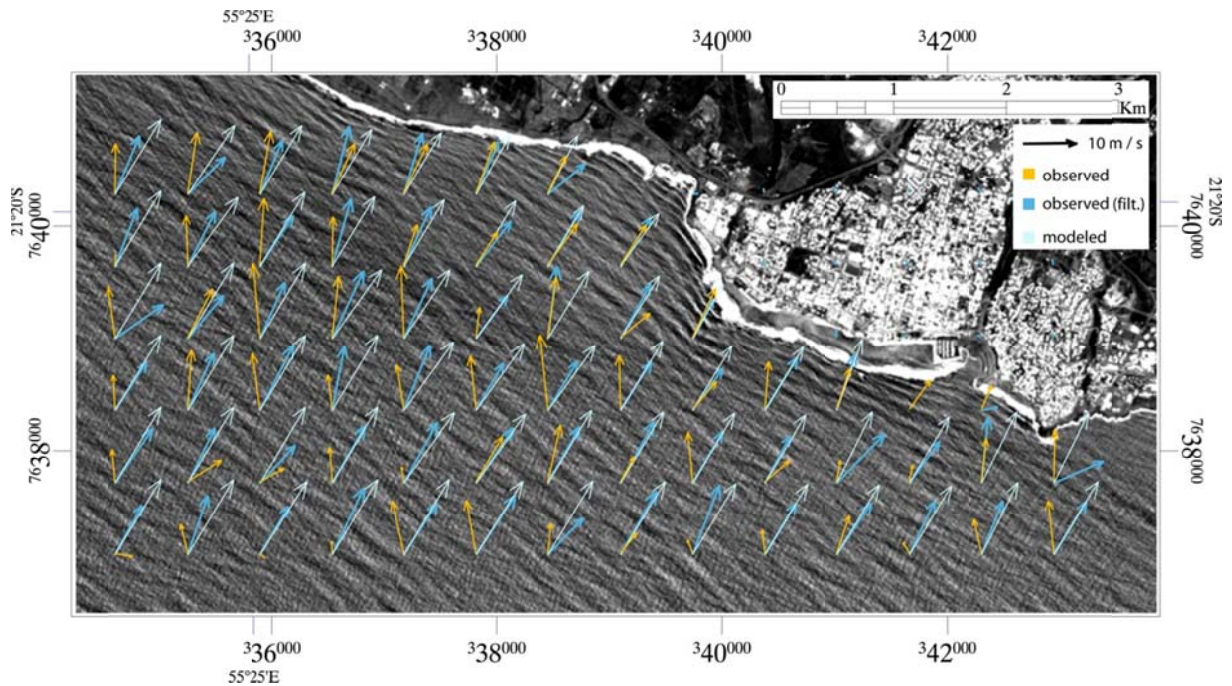


Figure 1: Waves velocity field retrieved from the SPOT-5 dataset (both filtered from the wind generated waves and not filtered) compared to SWAN modeled results. Orange vectors: velocity vectors obtained from COSI-corr analysis on non-filtered SPOT-5 data. They represent the velocity field that result from both the swell and the wind waves motion. Dark blue vectors: velocity vectors obtained from COSI-corr analysis on filtered SPOT-5 data. These vectors reasonably correspond to swell velocity field. Light blue vectors: velocity vectors obtained from SWAN swell analysis.

## 2. REFERENCES

- [1] S. Leprince, S. Barbot, F. Ayoub, J.-P. Avouac, Automatic and Precise Orthorectification, Coregistration, and Subpixel Correlation of Satellite Images, Application to Ground Deformation Measurements. *IEEE T. Geoscience and Remote Sensing*, 45, 6-1, pp 1529-1558, 2007
- [2] R. Ris, N. Booij, L. Holthuijsen. A third-generation wave model for coastal regions, Part II, Verification. *J. Geophys. Res.*, 104(C4), 7667-7681, 1999

## 3. ACKNOWLEDGEMENTS

We thank the Kalideos team (CNES) for providing the SPOT5 dataset. We are thankful to Nadia Khezami for her earlier inputs to this study. MdM, JT, DR thank BRGM research direction for supporting the study. SL was partly supported by the Keck Institute for Space Study and by the Gordon and Betty Moore Foundation.