



**HAL**  
open science

# Remediation of CO<sub>2</sub> leakage from deep saline aquifer storage based on reservoir and pollution engineering techniques

Jeremy Rohmer

► **To cite this version:**

Jeremy Rohmer. Remediation of CO<sub>2</sub> leakage from deep saline aquifer storage based on reservoir and pollution engineering techniques. 2nd EAGE CO<sub>2</sub> Geological Storage Workshop, Mar 2010, Berlin, Germany. hal-00531781

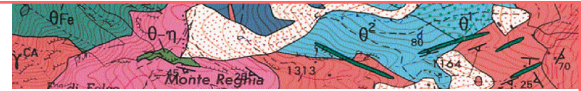
**HAL Id: hal-00531781**

**<https://brgm.hal.science/hal-00531781>**

Submitted on 3 Nov 2010

**HAL** is a multi-disciplinary open access archive for the deposit and dissemination of scientific research documents, whether they are published or not. The documents may come from teaching and research institutions in France or abroad, or from public or private research centers.

L'archive ouverte pluridisciplinaire **HAL**, est destinée au dépôt et à la diffusion de documents scientifiques de niveau recherche, publiés ou non, émanant des établissements d'enseignement et de recherche français ou étrangers, des laboratoires publics ou privés.



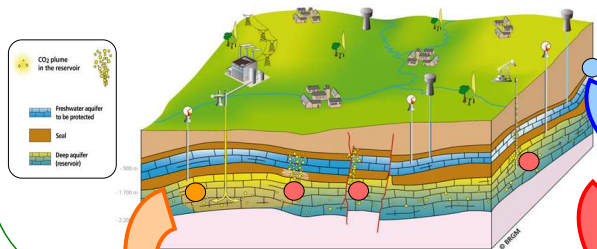
# Remediation of CO<sub>2</sub> Leakage from Deep Saline Aquifer Storage Based on Reservoir and Pollution Engineering Techniques

Jeremy Rohmer<sup>a</sup>, Thomas Le Guenan<sup>a</sup>, Arnaud Reveillere<sup>a</sup>, Chan Quang Vong<sup>a</sup>  
<sup>a</sup>BRGM, "Natural Hazards and Safety of CO<sub>2</sub> Storage" Division, Orléans, FRANCE

## CONTEXT

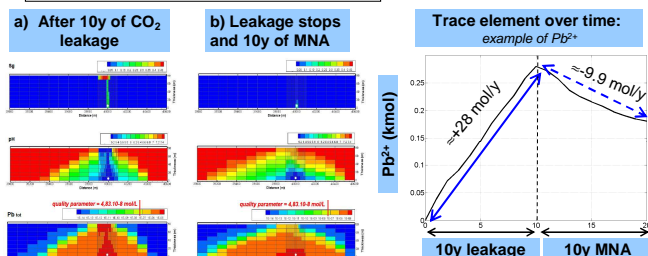
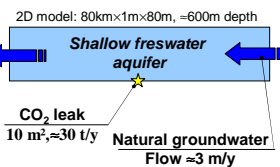
European Directive 2009/31/EC on the geological storage of CO<sub>2</sub> states:  
 Article 16, **Measures in case of leakages or significant irregularities**  
 « Member States shall ensure that in the event of leakages or significant irregularities, the operator immediately notifies the competent authority, and takes the necessary corrective measures ».  
 « **significant irregularity** » means any irregularity in the injection or storage operations or in the condition of the storage complex itself, which implies the risk of a leakage or risk to the environment or human health;  
 « **corrective measures** » means any measures taken to correct significant irregularities or to close leakages in order to prevent or stop the release of CO<sub>2</sub> from the storage complex.

- Available remediation measures mainly stem from the field of **reservoir and pollution engineering** (e.g. IEA GHG, 2007);
- But due to the **uniqueness of CO<sub>2</sub> geological storage activities** (time and spatial scale): the extent to which such measures can be used, if not **adapted**, for CO<sub>2</sub> storage in deep saline aquifers should be investigated;
- We adopt the global framework of the "**source – transfer – target**" approach in case of the **monitoring plan has detected an accidental CO<sub>2</sub> leakage from the reservoir** (either through faults or through abandoned wells).



## TARGET

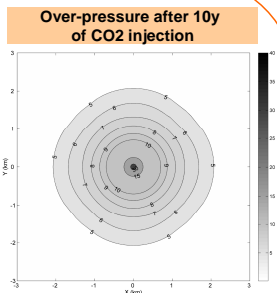
- **Objective:** remediate the **geochemical impact of a CO<sub>2</sub> intrusion** (release of Al, Ba, Cd, Cu, Fe, Mn, P, Pb and Zn);
- **Remediation technique:** **monitored natural attenuation MNA**;
- **2D Reactive transport simulation:** TOUGHREACT (Xu et al., 2004);
- **Properties based on the glauconitic sandstone Albian aquifer** (France) with mineral precipitation/dissolution reactions as being the main processes, (Vong et al., 2009).



- Provided that the leakage is stopped, we show:
1. **Rapid decrease** of the free mobile accumulated gas in the aquifer;
  2. **Natural attenuation of trace element release may be a long process**; in this case, the re-precipitation of the released Pb<sup>2+</sup> requires almost 30y;
  3. **More active intervention** procedures should be envisaged (e.g. pump and treats techniques).

## SOURCE

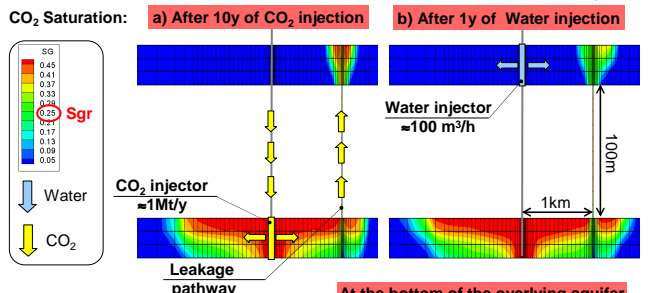
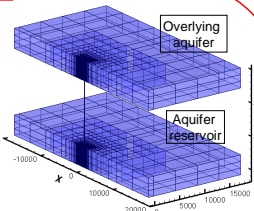
- **Objective, in case of abnormal behaviour,** control the injection-induced overpressure within the reservoir;
- **Remediation technique:**
  1. **Pressure natural recovery;**
  2. **Extract the injected CO<sub>2</sub>;**
  3. **Extract brine.**
- **Multiphase flow transport simulation:** TOUGH2/ECO2n (Pruess et al., 2005);
- **Application case:** 2D model of the Dogger aquifer in the Paris basin (Le Guenan et al., 2009).



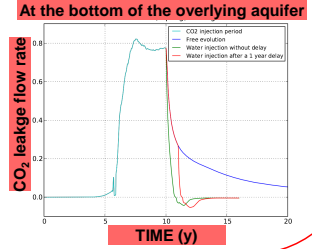
	Benefits = Pressure decrease		Cost
	in the injection zone	at 3km from the injection zone	
1.	65%	30%	1Mt CO <sub>2</sub>
2.	80%	45%	1.5Mt CO <sub>2</sub>
3.	70%	35%	1Mt CO <sub>2</sub> +1 well+0.5 Mt brine

## TRANSFER

- **Objective:** control the upwards migration of the CO<sub>2</sub> leak;
- **Remediation technique:** **hydraulic barrier** through water injection in the overlying aquifer;
- **Multiphase flow transport simulation:** TOUGH2/ECO2n (Pruess, 2005) and Local grid refinement (e.g. Audigane et al., 2009);
- **Typical properties** of sedimentary aquifers.



- Hydraulic barrier has a twofold effect:**
1. The **CO<sub>2</sub> leakage flow rate** at the bottom of the overlying aquifer is **stopped**;
  2. The **trapping** (dissolution and residual) of the accumulated CO<sub>2</sub> is **enhanced**.



## References

Audigane, P., Chiaberge, C., Lions, J., Humez, P., 2009. Modeling of CO<sub>2</sub> leakage through an abandoned well from a deep saline aquifer to fresh groundwater. Proceedings of the TOUGH Symposium 2009, LBNL, Berkeley, California, September 14-16, 2009.  
 European Commission, 2009. Directive 2009/31/EC of the European Parliament and of the Council of 23 April 2009 on the geological storage of carbon dioxide  
 IEA-GHG, 2007. Remediation of Leakage from CO<sub>2</sub> Storage Reservoirs. IEA Greenhouse Gas R&D Programme, 2007/11, September 2007.  
 Le Guenan T., Rohmer J., Gastine M., 2009. Managing CO<sub>2</sub> seepage risk for deep saline aquifer reservoirs through preventive and corrective measures based on reservoir engineering - Application to the Paris basin case., in The 5th Trondheim Conference on CO<sub>2</sub> Capture Transport and Storage - Norgève - Trondheim - 16-17 June 2009  
 Pruess, K., 2005. ECO2N: A TOUGH2 Fluid Property Module for Mixtures of Water, NaCl, and CO<sub>2</sub>. Report LBNL-57952. Lawrence Berkeley National Laboratory, Berkeley, CA, USA.  
 Vong C.Q., Lions J., Audigane P., Humez P., Chiaberge C., Bouc O., 2009. Potential hydrogeochemical impacts of CO<sub>2</sub> leakage into shallow aquifers : review and modelling., in CO<sub>2</sub>NET 2009 Annual Seminar Agenda - Trondheim - Norway - 16-19 June 2009  
 Xu T., Sonenthal E.L., Spycher N., Pruess K., 2004. TOUGHREACT user's guide. Lawrence Berkeley National Laboratory Report LBNL-55460.

## Acknowledgments

This work was funded under the BRGM's Research project "Gestion des Risques" integrated in the Directorate of Research des Risques CSCSR3.

J. ROHMER, T. LEGUENAN, A. REVEILLERE, C.Q. VONG  
 j.rohmer@brgm.fr  
 BRGM